

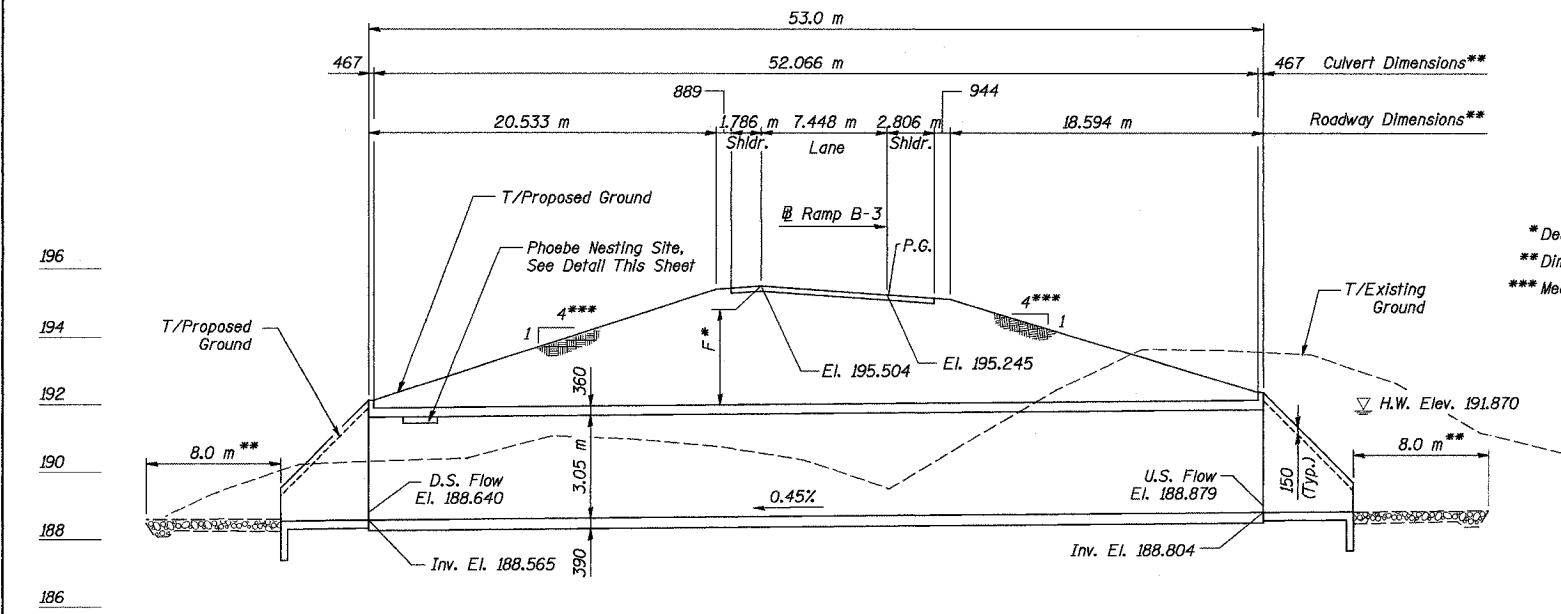
Bench Mark: BM 3003 - Chiseled  $\square$  on SW corner of 150 spur bridge over War Memorial Drive. Elevation 199.790  
 Existing Structure: S.N. 072-2505 built prior to 1965 as a single 3.05 m x 3.66 m RCB culvert with a length of 24.1 m.  
 The existing structure shall be removed. No salvage.  
 Construction Staging: Single Stage Construction

ROUTE NO.	SECT.	COUNTY	SHEET NO.	TOTAL SHEETS
F.A.I. 74	(72-7) R-3	PEORIA	544	1360
FED. ROAD DIST. NO. 7	ILLINOIS	FED. AID PROJECT		

CONTRACT NO. 68200

**INDEX OF SHEETS**

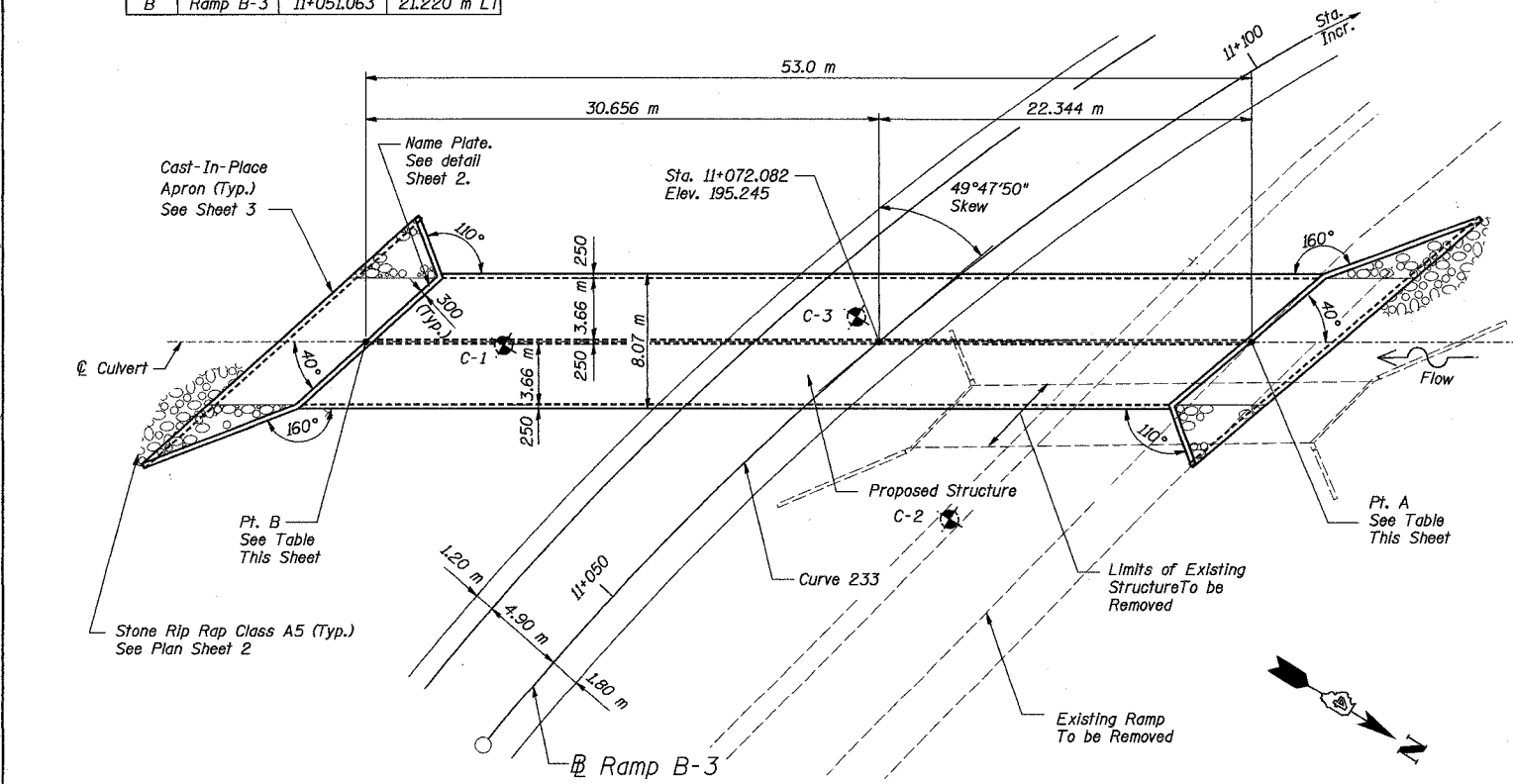
- 1 General Plan and Longitudinal Section
- 2 General Notes, Total Bill of Material & Details
- 3 Culvert Plan and Section I
- 4 Culvert Plan and Section II
- 5 Bar Details and Bill of Material
- 6 Boring Logs I
- 7 Boring Logs II



**LONGITUDINAL SECTION**  
 Note: All Elevations are Measured Along  $\mathcal{C}$  Culvert

**GEOMETRIC CONTROL POINTS**

Point	Baseline	Sta.	Offset
A	Ramp B-3	11+090.497	13.525 m RT
B	Ramp B-3	11+051.063	21.220 m LT

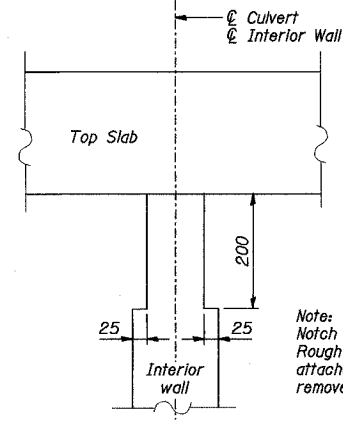


**PLAN**

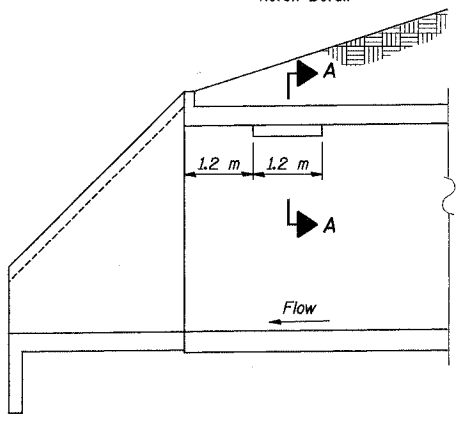
Designed by: WEE  
 Checked by: RW  
 Drafted by: RKS  
 Checked by: RW

Soil Boring Locations

\* Design Fill Height (F) = 3.5 m  
 \*\* Dimensions taken along  $\mathcal{C}$  Culvert  
 \*\*\* Measured at Rt L's to Ramp B-3



**SECTION A-A**  
 Notch Detail



**PHOEBE NESTING SITE DETAIL**  
 Downstream End Only

**DESIGN SPECIFICATIONS**

2002 AASHTO Standard Specifications

**DESIGN STRESSES**

**FIELD UNITS**

$f'_c$  = 24 MPa  
 $f_y$  = 420 MPa (Reinf.)  
 Max. Soil Pressure  
 Under Footing = 81 kPa

**LOADING MS18 & ALT**

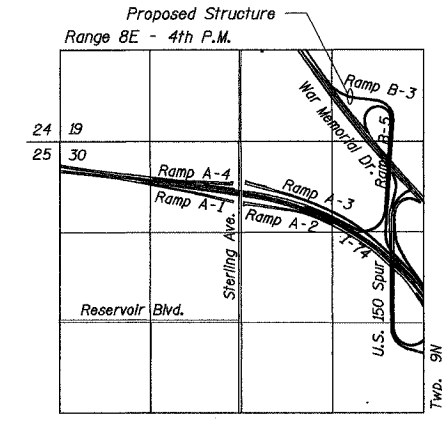
Allow 2.4 kN/m<sup>2</sup> for future wearing surface.

STATION 11+072.082 (@ Ramp B-3)  
 BUILT 200\_ BY  
 STATE OF ILLINOIS  
 F.A.I. RT. 74 SEC (72-7)R-3  
 STR. NO. 072-2030

**NAME PLATE**

See Std. 515001

Note:  
 All Dimensions are in millimeters (mm)  
 except as noted.



**LOCATION SKETCH**

REVISION	DATE	DESCRIPTION
STATE OF ILLINOIS DEPARTMENT OF TRANSPORTATION		
GENERAL PLAN AND LONGITUDINAL SECTION		
RAMP B-3 OVER DRY RUN CREEK F.A.I. ROUTE 74 SEC. (72-7)R-3 PEORIA COUNTY STA. 11+072.082 (RAMP B-3) STRUCTURE NUMBER 072-2030		
PARSONS TRANSPORTATION GROUP CHICAGO, ILLINOIS		
DRAWING NO. 1	SCALE N.T.S.	DATE 8/31/04
		SHEET NO. 1



Date: 11/22/2004 Time: 10:20:37 AM  
 File: P:\643996\structure\072-2030-culvert\sheet\Tracings\0722030.dgn