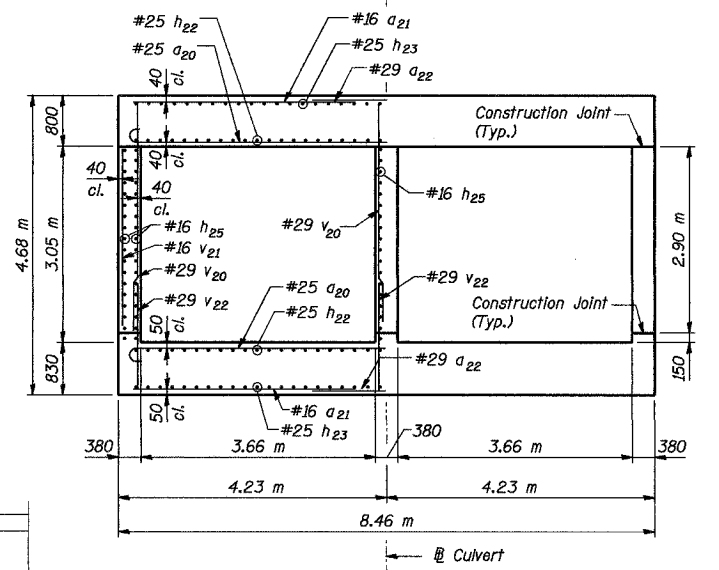
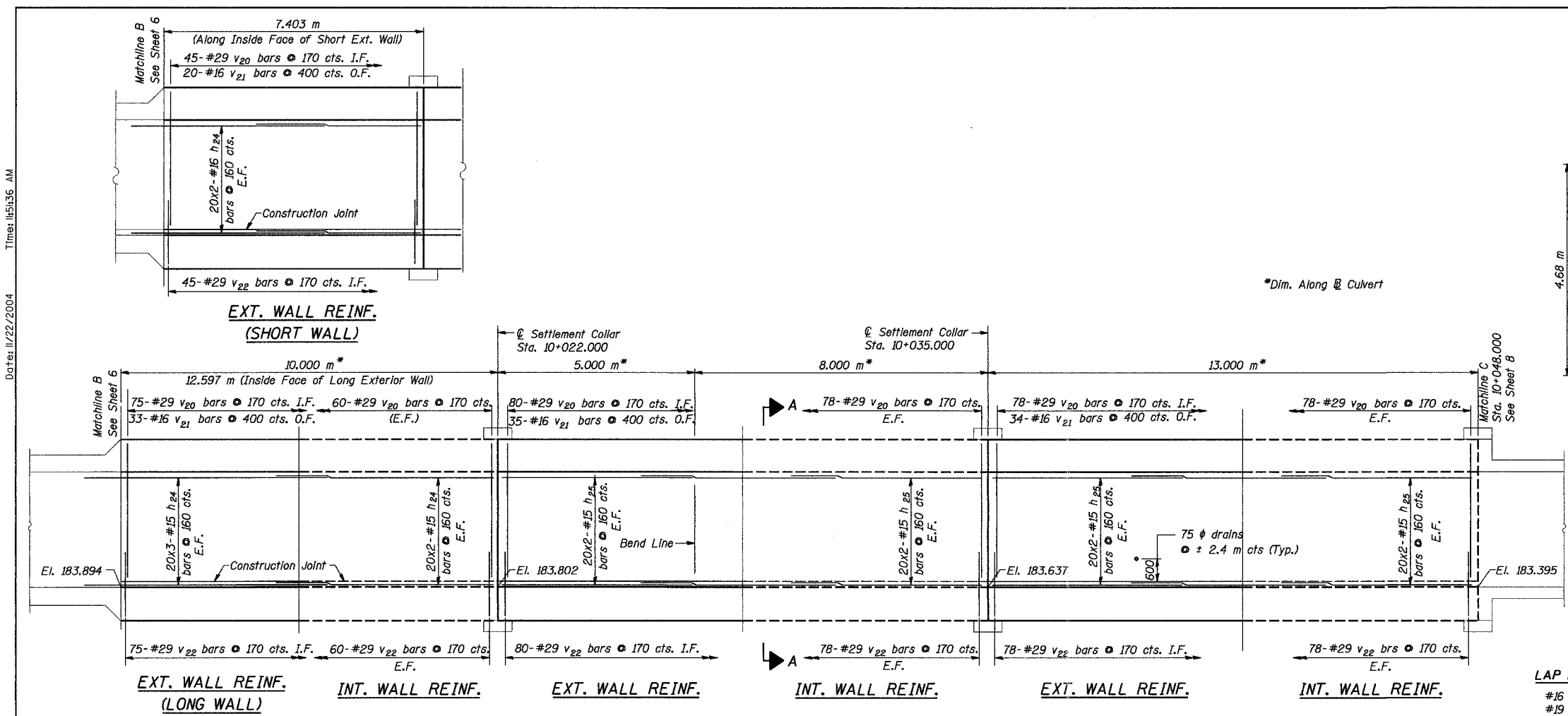


ROUTE NO.	SECT.	COUNTY	SHEET NO.	TOTAL SHEETS
F.A.I. 74	(72-7) R-3	PEORIA	558	1360
FED. ROAD DIST. NO.	ILLINOIS	FED. AID PROJECT		
NO. 7				

CONTRACT NO. 68200

Date: 11/22/2004 Time: 11:51:35 AM



LAP LENGTHS

#16	- 550
#19	- 670
#25	- 1.190 m

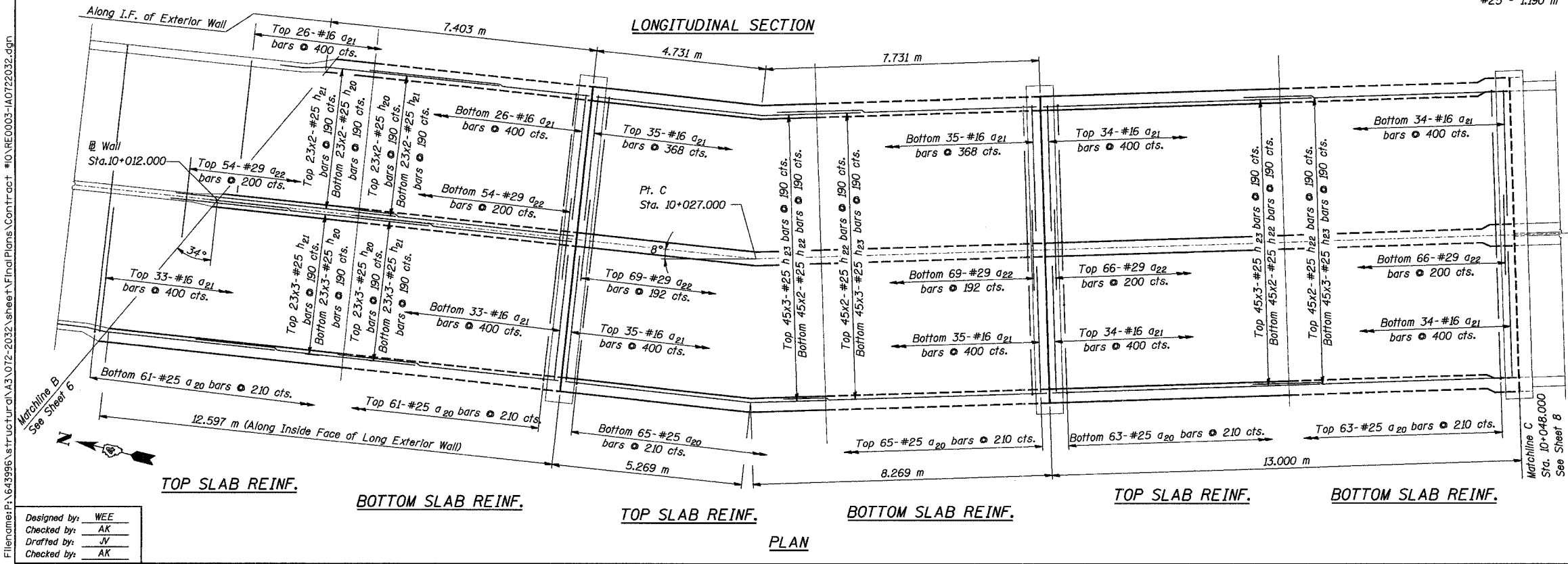
Notes:

Bars indicated thus 20x3-#16 etc. indicates 20 lines of bars with 3 lengths per line.

All Stations and Elevations are measured along Culvert.

For Bar Details and Bill of Material see Sheet 12.

E.F. = Each Face
 I.F. = Inside Face
 O.F. = Outside Face



Designed by: WEE
 Checked by: AK
 Drafted by: JV
 Checked by: AK

REVISION	DATE	DESCRIPTION
STATE OF ILLINOIS DEPARTMENT OF TRANSPORTATION		
CULVERT PLAN AND SECTION III		
F.A.I. ROUTE 74 (I-74) OVER DRY RUN CREEK F.A.I. ROUTE 74 SEC. (72-7)R-3 PEORIA COUNTY STA. 143+305.339 (E.B. I-74) STRUCTURE NUMBER 072-2032		
PARSONS TRANSPORTATION GROUP CHICAGO, ILLINOIS		
DRAWING NO. 7	SCALE N.T.S.	DATE 6/30/03
		SHEET NO. 7