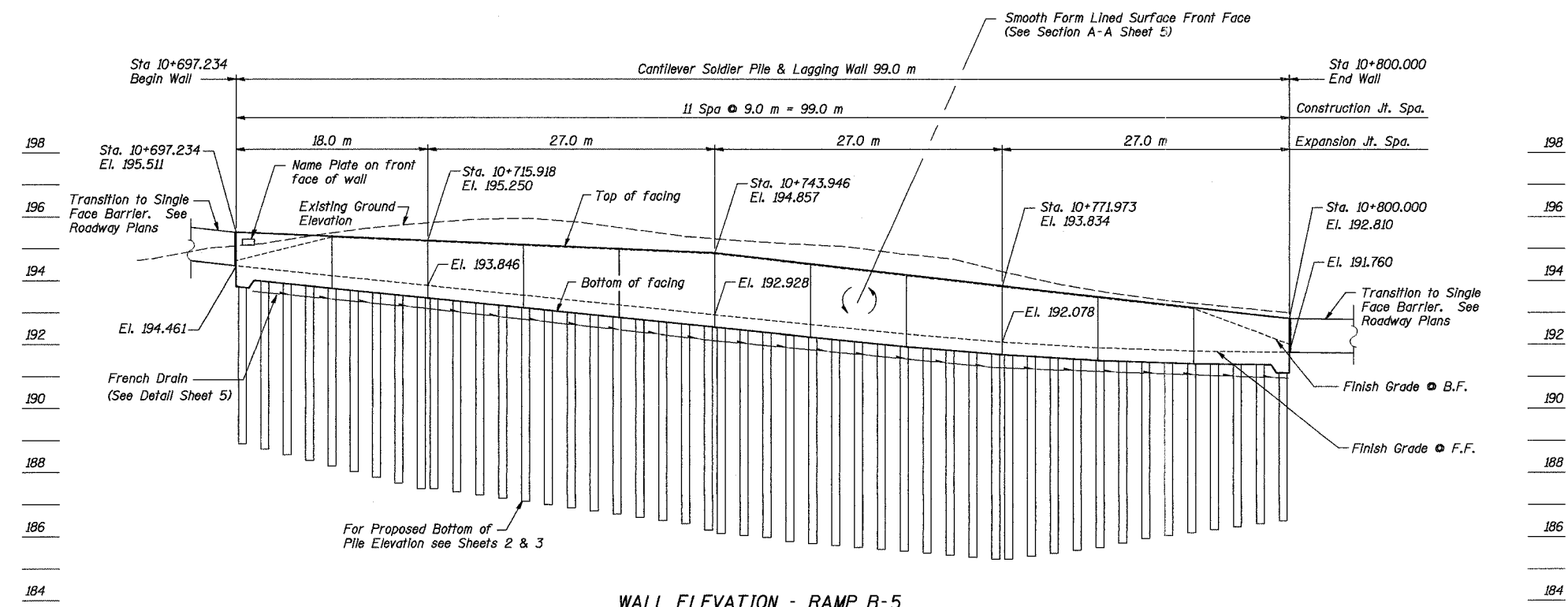


ROUTE NO.	SECT.	COUNTY	SHEET NO.	TOTAL SHEETS
F.A.I. 74	(72-7) R-3	PEORIA	608	1360
FED. ROAD DIST. NO. 7	ILLINOIS	FED. AID PROJECT		

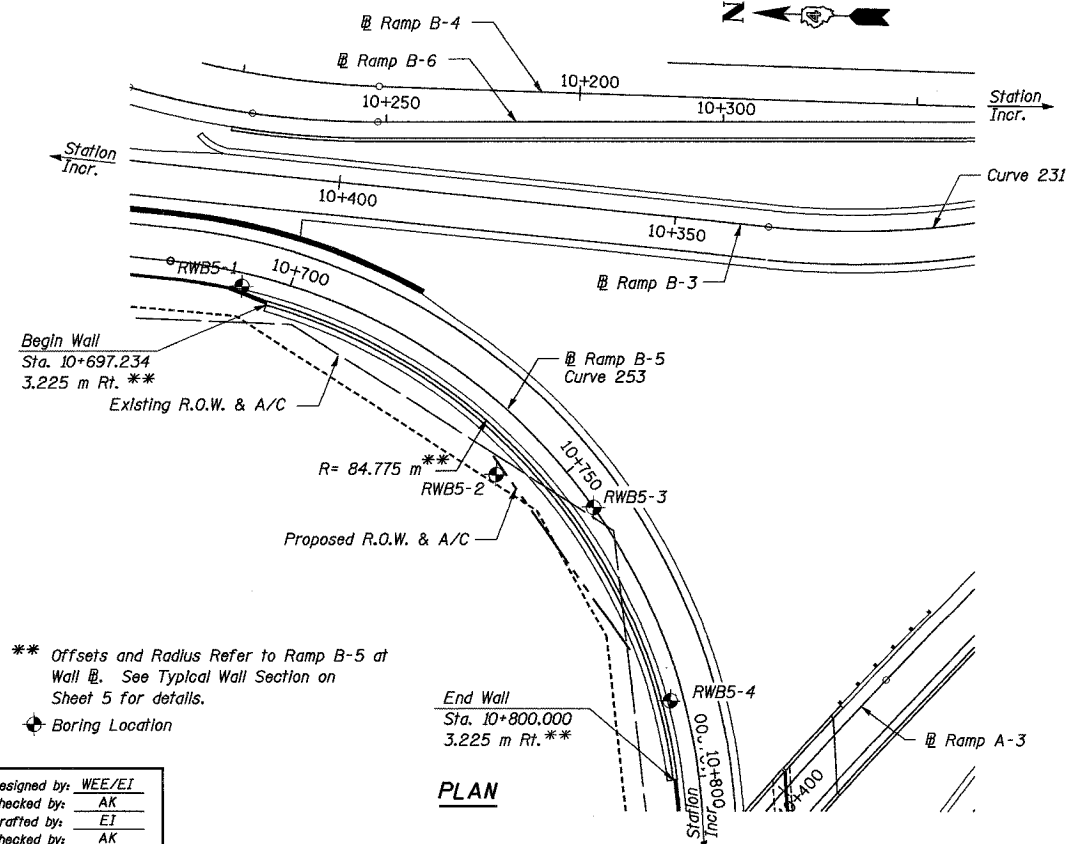
CONTRACT NO. 68200

B. M. #49 : Southwest base bolt on aluminum light pole, north side of WB lanes, I-74 and 30 m west of bridge, War Memorial Drive spur over I-74, El. 190.771 m
 B. M. #3001 : Chiseled "□" on concrete sign base (I-74 - Bloomington/Galesburg) on west side of War Memorial Drive spur. El. 198.767 m
 Construction Staging: Single Stage Construction



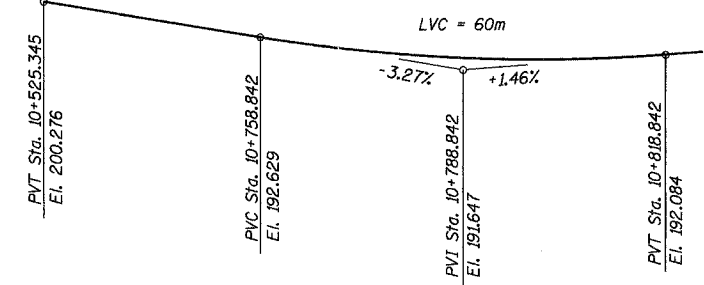
WALL ELEVATION - RAMP B-5
 (Looking at Back Face)
 (Piles above bottom of facing not shown for clarity)

Note: See Civil Plans for connection of French Drain to Drainage System.



PLAN

** Offsets and Radius Refer to Ramp B-5 at Wall @. See Typical Wall Section on Sheet 5 for details.
 * Boring Location



PROFILE GRADE RAMP B-5
 (Along Ramp B-5)

STA. 10+697.234 - STA. 10+800.000
 BUILT 200... BY
 STATE OF ILLINOIS
 F.A.I. RT. 74 SEC (72-7)R-3
 STR. NO. 072-8558

NAME PLATE
 See Std. 515001

CURVE DATA

CURVE 253
 R = 88.000 m
 T = 133.370 m
 L = 173.809 m
 E = 71.786 m
 PC STA = 10+681.815
 PI STA = 10+815.184
 PT STA = 10+855.624
 S.E. = 7.9%
 Transition in 10+650 to 10+698
 Transition out 10+840 to 10+888

DESIGN STRESSES

FIELD UNITS
 f'c = 24 MPa
 fy = 400 MPa (Reinf.)
 fy = 250 MPa (Soldier Piles);
 M270M (Grade 250)
 fb = 6.9 MPa (Untreated Timber Lagging)

DESIGN SPECIFICATIONS

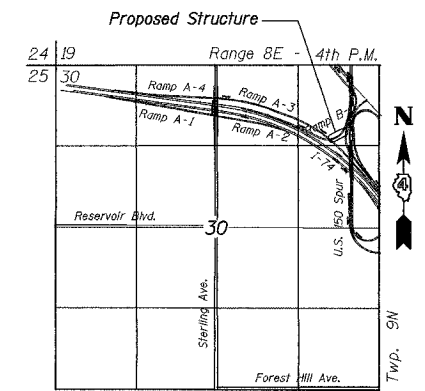
1996 AASHTO With 1997 Through 2002 Interims

GENERAL NOTES

1. Reinforcement bars shall conform to the requirements of AASHTO M 31M or M 322M Grade 400.
2. All dimensions are in millimeters (mm) except as noted.
3. All construction joints shall be bonded.

INDEX OF SHEETS

1. General Plan and Elevation
2. Soldier Piles I
3. Soldier Piles II
4. C.I.P. Concrete Facing
5. Typical Sections and Misc. Details
6. Boring Logs I
7. Boring Logs II



LOCATION SKETCH

TOTAL BILL OF MATERIAL

ITEM	UNIT	TOTAL
Stud Shear Connectors	Each	186
Name Plates	Each	1
French Drains	m ³	8.8
Structure Excavation	m ³	213
Concrete Structures	m ³	82.1
Reinforcement Bars, Epoxy Coated	kg	4750
Geocomposite Wall Drain	m ²	181
Untreated Timber Lagging	m ²	170
Form Liner Grid and Fin Surface	m ²	219
Furnishing Soldier Piles (HP Section)	m	360.0
Drilling and Setting Soldier Piles (in Soil)	m ³	81.4

REVISION	DATE	DESCRIPTION
STATE OF ILLINOIS DEPARTMENT OF TRANSPORTATION		
GENERAL PLAN AND ELEVATION		
WALL NO. 9 - RAMP B-5 F.A.I. ROUTE 74 SECTION (72-7)R-3 PEORIA COUNTY STATION 10+697.234 TO 10+800.000 (RAMP B-5) STRUCTURE NUMBER 072-8558		
PARSONS TRANSPORTATION GROUP CHICAGO, ILLINOIS		
DRAWING NO. 1	SCALE N.T.S.	DATE 6/25/04
		SHEET NO. 1

Date: 11/22/2004 Time: 12:16:38 PM File: P:\643996\structure\072-8558-Wall\9-sheet\Tracings\GP0001-A072-8558.dgn