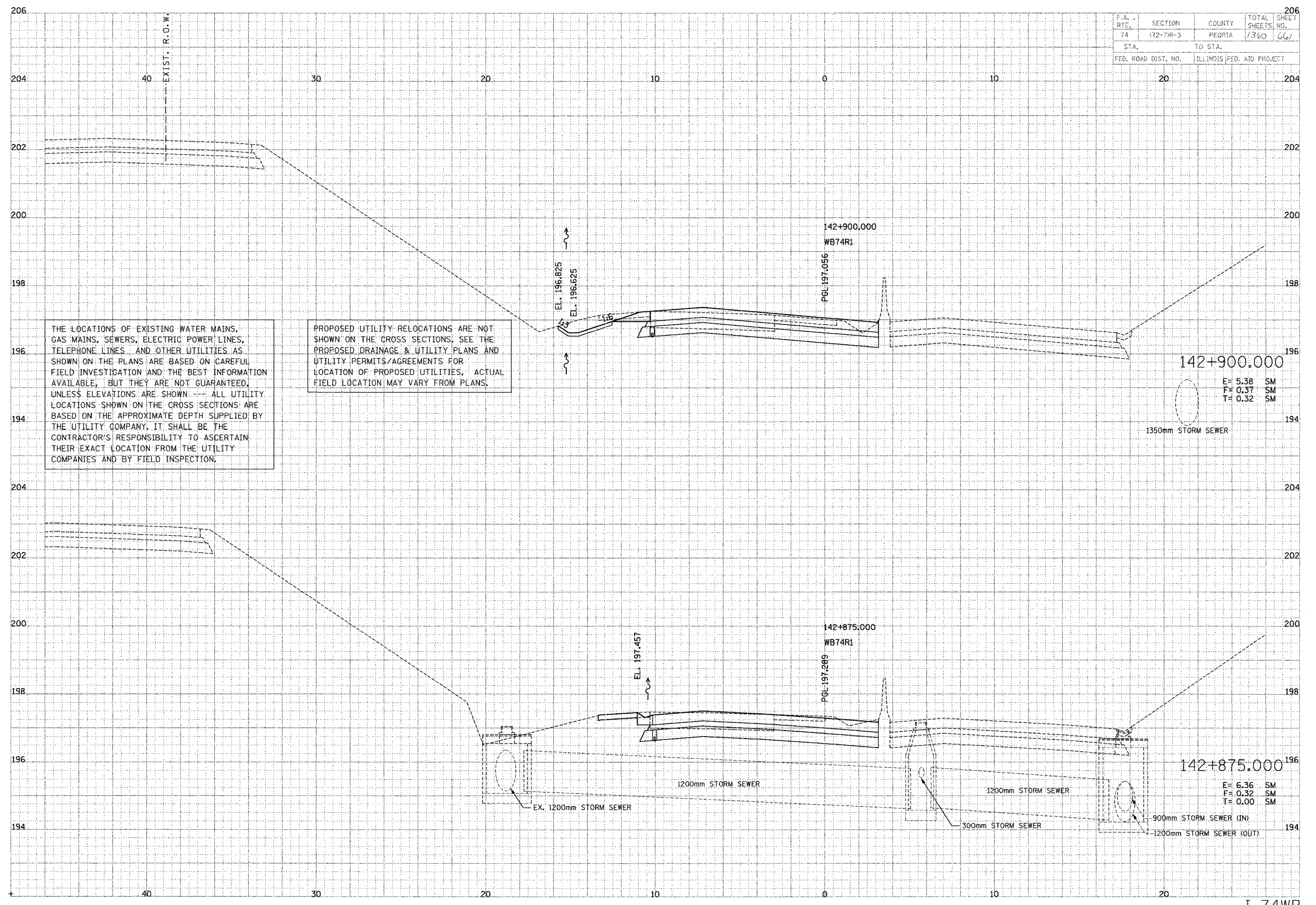


F.A. RTE.	SECTION	COUNTY	TOTAL SHEETS	SHEET NO.
74	(72-7R-3)	PEORIA	1360	667
STA.	TO STA.			
FED. ROAD DIST. NO.	ILLINOIS FED. AID PROJECT			

DATE	BY
DATE	BY
DATE	BY
DATE	BY
DATE	BY
DATE	BY

PARSONS  
BRINCKERHOFF  
ENGINEERS AND PLANNERS

DATE	BY
DATE	BY
DATE	BY
DATE	BY
DATE	BY



THE LOCATIONS OF EXISTING WATER MAINS, GAS MAINS, SEWERS, ELECTRIC POWER LINES, TELEPHONE LINES AND OTHER UTILITIES AS SHOWN ON THE PLANS ARE BASED ON CAREFUL FIELD INVESTIGATION AND THE BEST INFORMATION AVAILABLE, BUT THEY ARE NOT GUARANTEED, UNLESS ELEVATIONS ARE SHOWN. ALL UTILITY LOCATIONS SHOWN ON THE CROSS SECTIONS ARE BASED ON THE APPROXIMATE DEPTH SUPPLIED BY THE UTILITY COMPANY. IT SHALL BE THE CONTRACTOR'S RESPONSIBILITY TO ASCERTAIN THEIR EXACT LOCATION FROM THE UTILITY COMPANIES AND BY FIELD INSPECTION.

PROPOSED UTILITY RELOCATIONS ARE NOT SHOWN ON THE CROSS SECTIONS. SEE THE PROPOSED DRAINAGE & UTILITY PLANS AND UTILITY PERMITS/AGREEMENTS FOR LOCATION OF PROPOSED UTILITIES, ACTUAL FIELD LOCATION MAY VARY FROM PLANS.

142+900.000  
E = 5.38 SM  
F = 0.37 SM  
T = 0.32 SM  
1350mm STORM SEWER

142+875.000  
E = 6.36 SM  
F = 0.32 SM  
T = 0.00 SM  
EX. 1200mm STORM SEWER  
1200mm STORM SEWER  
300mm STORM SEWER  
900mm STORM SEWER (IN)  
1200mm STORM SEWER (OUT)