

F.A. RTE.	SECTION	COUNTY	TOTAL SHEETS	SHEET NO.
74	772-71R-3	PEORIA	1360	870
STA.		TO STA.		
FED. ROAD DIST. NO.		ILLINOIS FED. AID PROJECT		

FINAL SURVEY	DATE
BY	
REVISION	
DATE	
BY	

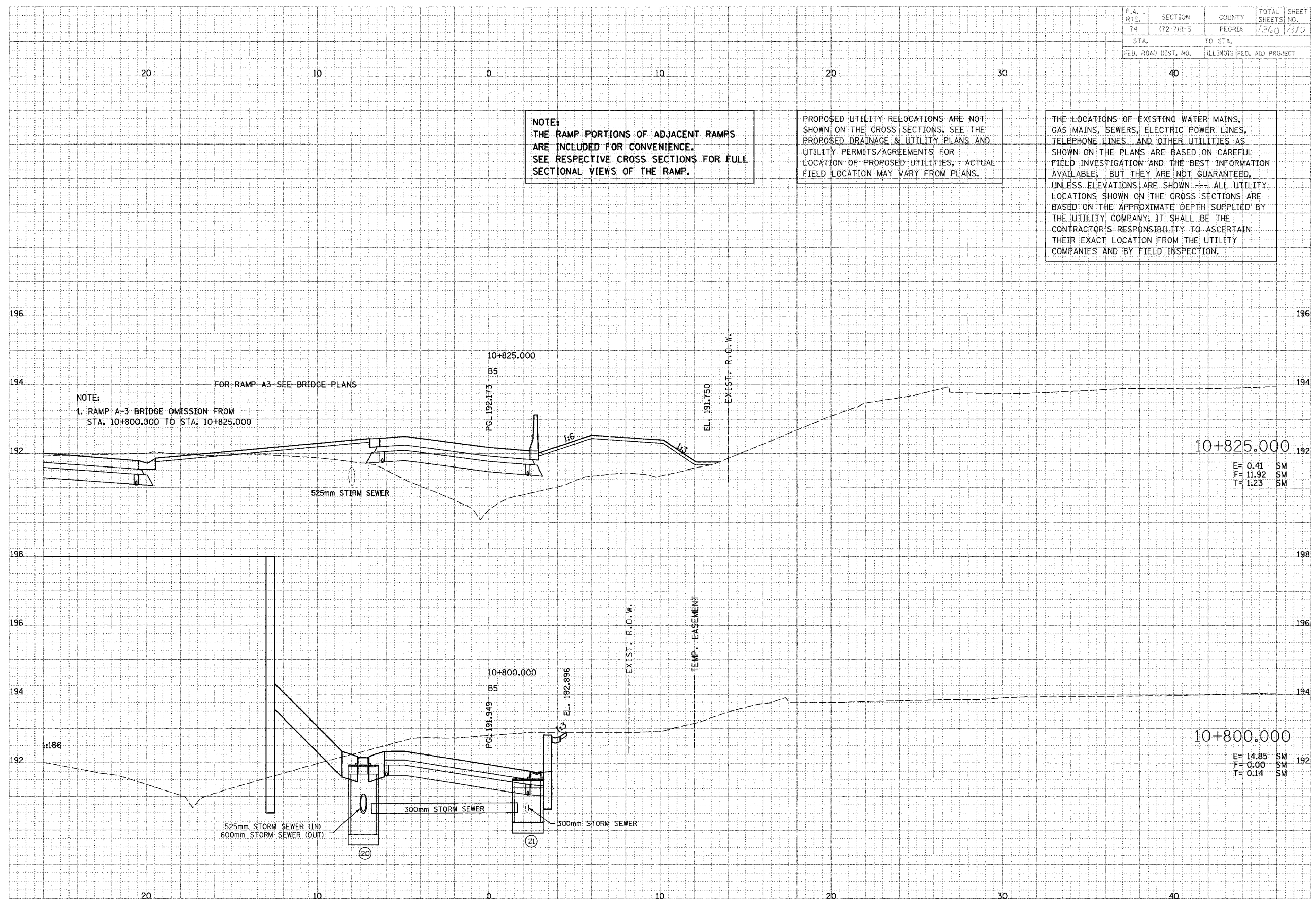
PARSONS
TRANSPORTATION DESIGN
Engineers and Planners

PRELIM SURVEY	DATE
BY	
REVISION	
DATE	
BY	

NOTE:
THE RAMP PORTIONS OF ADJACENT RAMP
ARE INCLUDED FOR CONVENIENCE.
SEE RESPECTIVE CROSS SECTIONS FOR FULL
SECTIONAL VIEWS OF THE RAMP.

PROPOSED UTILITY RELOCATIONS ARE NOT
SHOWN ON THE CROSS SECTIONS. SEE THE
PROPOSED DRAINAGE & UTILITY PLANS AND
UTILITY PERMITS/AGREEMENTS FOR
LOCATION OF PROPOSED UTILITIES. ACTUAL
FIELD LOCATION MAY VARY FROM PLANS.

THE LOCATIONS OF EXISTING WATER MAINS,
GAS MAINS, SEWERS, ELECTRIC POWER LINES,
TELEPHONE LINES AND OTHER UTILITIES AS
SHOWN ON THE PLANS ARE BASED ON CAREFUL
FIELD INVESTIGATION AND THE BEST INFORMATION
AVAILABLE, BUT THEY ARE NOT GUARANTEED,
UNLESS ELEVATIONS ARE SHOWN. ALL UTILITY
LOCATIONS SHOWN ON THE CROSS SECTIONS ARE
BASED ON THE APPROXIMATE DEPTH SUPPLIED BY
THE UTILITY COMPANY. IT SHALL BE THE
CONTRACTOR'S RESPONSIBILITY TO ASCERTAIN
THEIR EXACT LOCATION FROM THE UTILITY
COMPANIES AND BY FIELD INSPECTION.



10+825.000
E = 0.41 SM
F = 11.92 SM
T = 1.23 SM

10+800.000
E = 14.85 SM
F = 0.00 SM
T = 0.14 SM