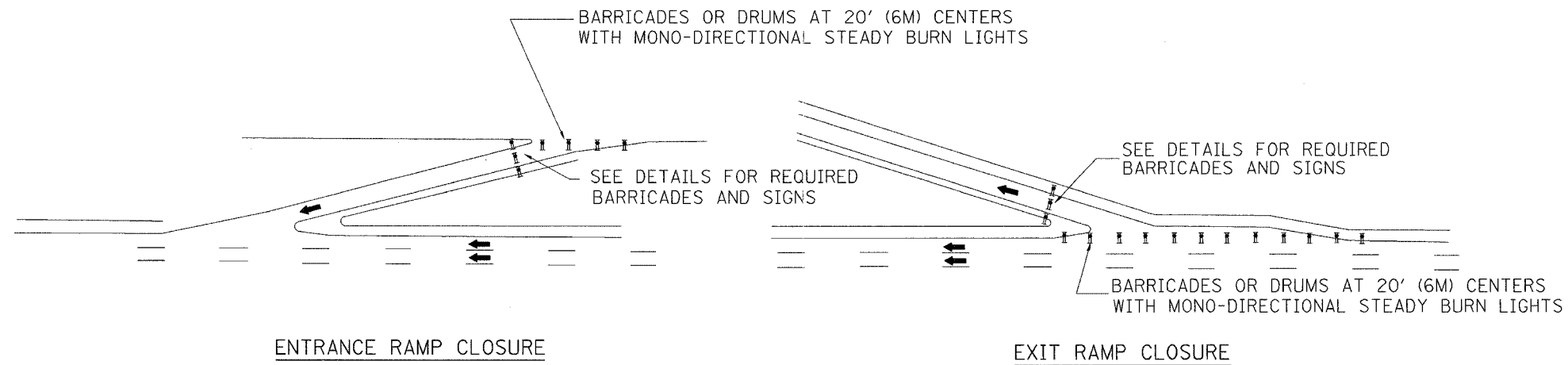
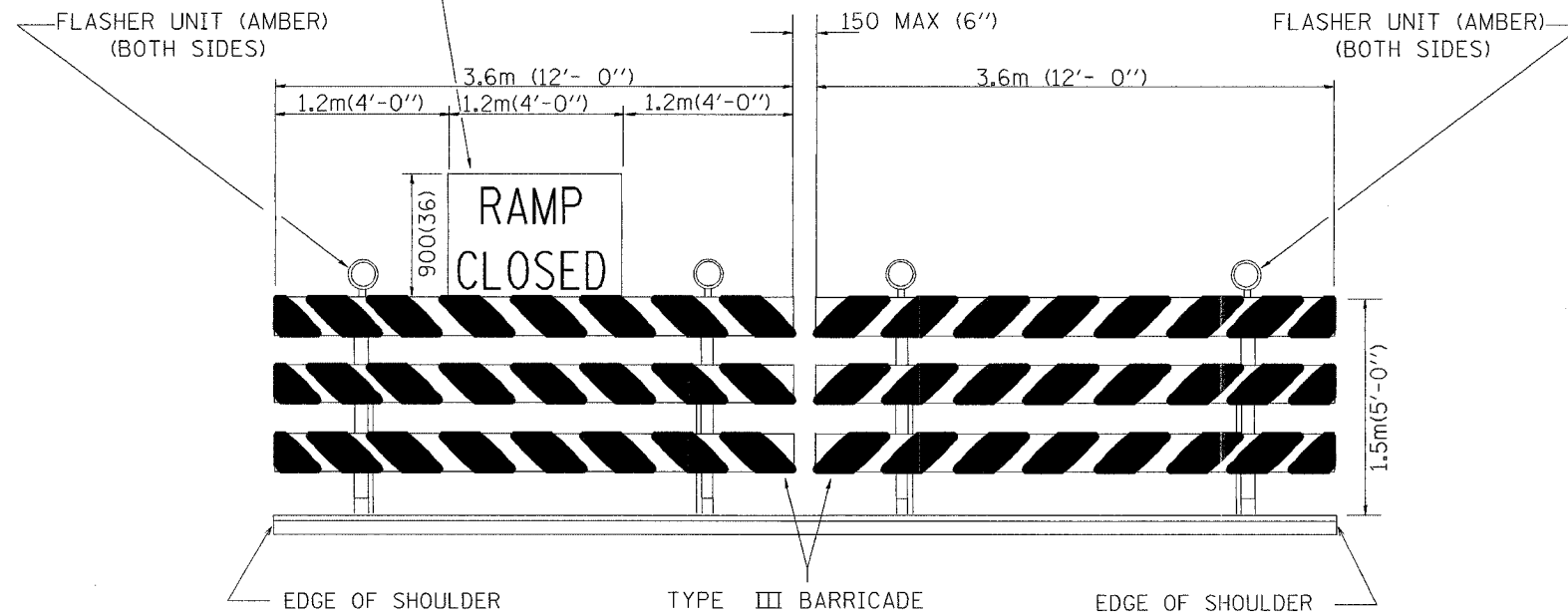


F.A. RTE.	SECTION	COUNTY	TOTAL SHEETS	SHEET NO.
			1300	869
STA.		TO STA.		
FED. ROAD DIST. NO.		ILLINOIS FED. AID PROJECT		



THE CONTRACTOR SHALL MOUNT THE "RAMP CLOSED" SIGN TO THE TOP OF THE TYPE III BARRICADE AS SHOWN. (THE SIGN SHALL BE B/W WITH 200(8) CAPS.)



PLACE 150 M (500') IN ADVANCE OF RAMP

BLACK LEGEND ON ORANGE REFLECTORIZED BACKGROUND

RAMP CLOSED AHEAD SIGN

DETAIL FOR REQUIRED BARRICADES & SIGNS

NOTES:

1. CONES MAY BE SUBSTITUTED FOR TYPE I AND TYPE II BARRICADES AND DRUMS DURING DAY OPERATIONS. CONES SHALL BE A MINIMUM OF 700 (28") IN HEIGHT.
2. STEADY BURN LIGHTS WILL NOT BE REQUIRED FOR DAY OPERATIONS.

All dimensions are in millimeters (inches) unless otherwise noted.

ILLINOIS DEPARTMENT OF TRANSPORTATION  
I-74 PROJECT STANDARD 701411-I74

ENTRANCE AND EXIT RAMP CLOSURE DETAILS

SCALE: NONE DRAWN BY  
DATE 10/09/01 CHECKED BY

DATE	REVISIONS	BY