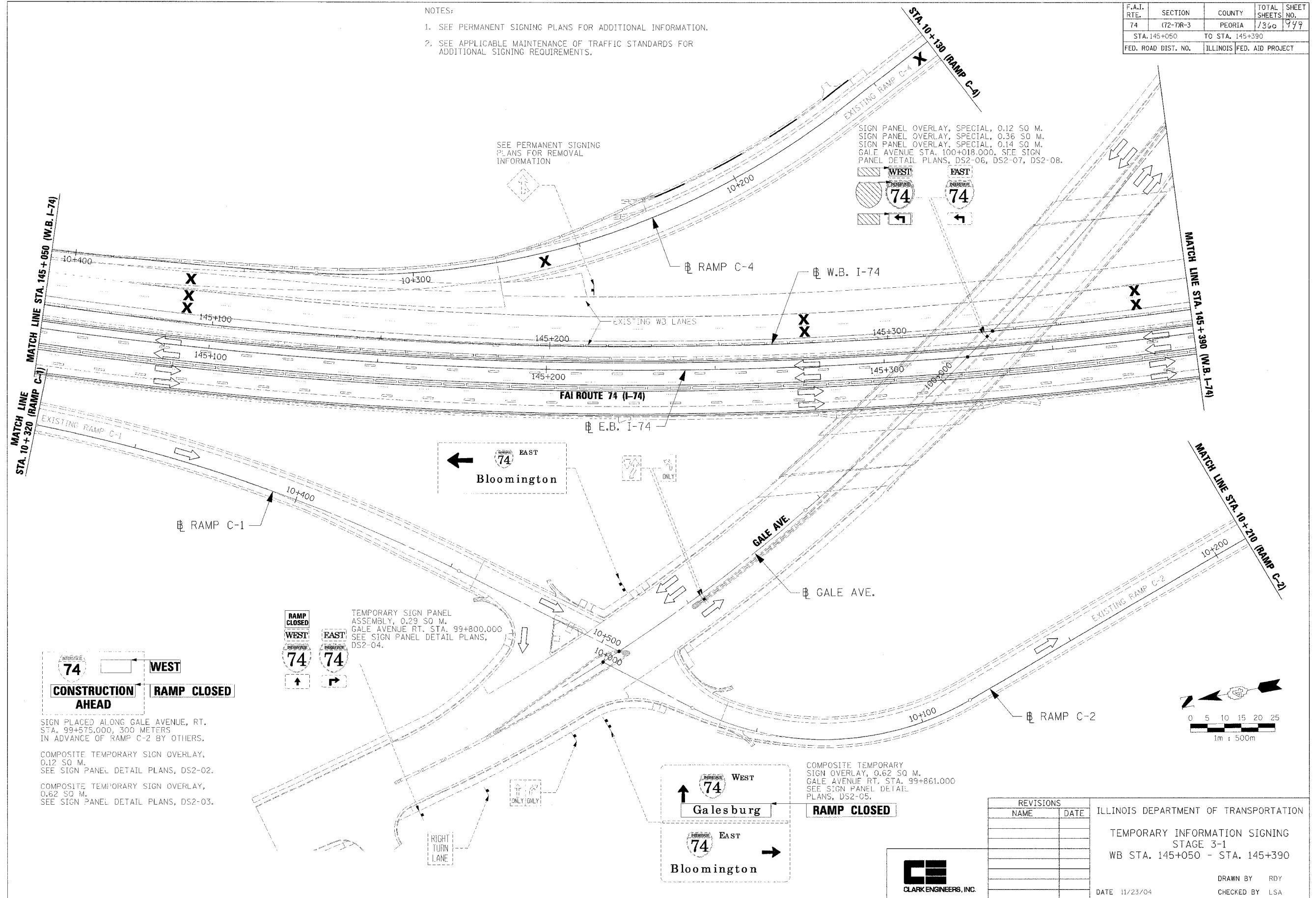


- NOTES:
1. SEE PERMANENT SIGNING PLANS FOR ADDITIONAL INFORMATION.
 2. SEE APPLICABLE MAINTENANCE OF TRAFFIC STANDARDS FOR ADDITIONAL SIGNING REQUIREMENTS.

F.A.I. RTE.	SECTION	COUNTY	TOTAL SHEETS	SHEET NO.
74	(72-70R-3)	PEORIA	1360	999
STA. 145+050		TO STA. 145+390		
FED. ROAD DIST. NO.	ILLINOIS	FED. AID PROJECT		



SIGN PANEL OVERLAY, SPECIAL, 0.12 SQ M.
 SIGN PANEL OVERLAY, SPECIAL, 0.36 SQ M.
 SIGN PANEL OVERLAY, SPECIAL, 0.14 SQ M.
 GALE AVENUE STA. 100+018.000, SEE SIGN
 PANEL DETAIL PLANS, DS2-06, DS2-07, DS2-08.

TEMPORARY SIGN PANEL
 ASSEMBLY, 0.29 SQ M.
 GALE AVENUE RT. STA. 99+800.000
 SEE SIGN PANEL DETAIL PLANS,
 DS2-04.

COMPOSITE TEMPORARY
 SIGN OVERLAY, 0.62 SQ M.
 GALE AVENUE RT. STA. 99+861.000
 SEE SIGN PANEL DETAIL
 PLANS, DS2-05.

SIGN PLACED ALONG GALE AVENUE, RT.
 STA. 99+575.000, 300 METERS
 IN ADVANCE OF RAMP C-2 BY OTHERS.
 COMPOSITE TEMPORARY SIGN OVERLAY,
 0.12 SQ M.
 SEE SIGN PANEL DETAIL PLANS, DS2-02.
 COMPOSITE TEMPORARY SIGN OVERLAY,
 0.62 SQ M.
 SEE SIGN PANEL DETAIL PLANS, DS2-03.

REVISIONS	
NAME	DATE

ILLINOIS DEPARTMENT OF TRANSPORTATION
 TEMPORARY INFORMATION SIGNING
 STAGE 3-1
 WB STA. 145+050 - STA. 145+390

DATE 11/23/04

DRAWN BY RDY
 CHECKED BY LSA

