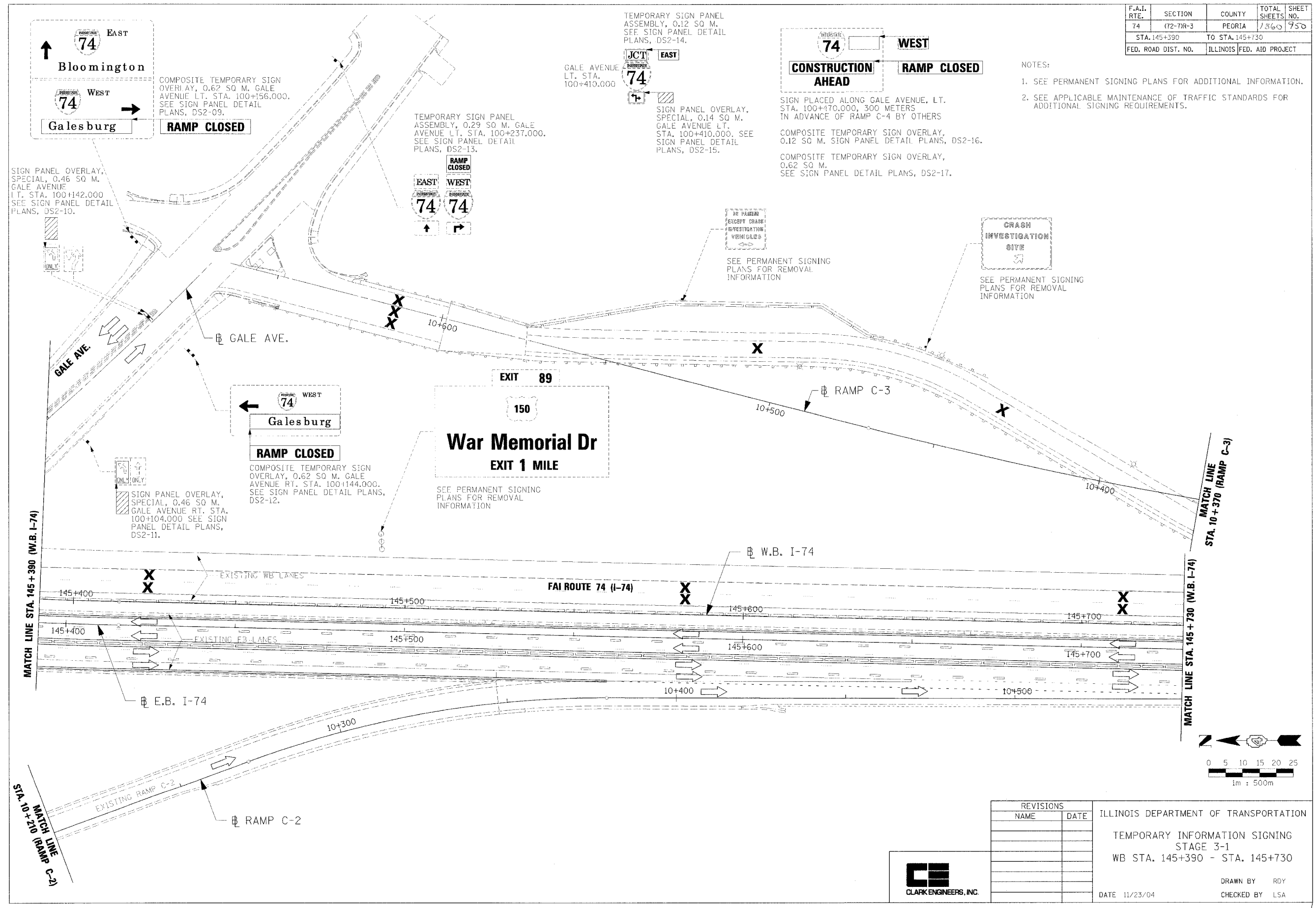


F.A.I. RTE.	SECTION	COUNTY	TOTAL SHEETS	SHEET NO.
74	(72-70R-3)	PEORIA	1360	750
STA. 145+390		TO STA. 145+730		
FED. ROAD DIST. NO.		ILLINOIS FED. AID PROJECT		

- NOTES:
- SEE PERMANENT SIGNING PLANS FOR ADDITIONAL INFORMATION.
  - SEE APPLICABLE MAINTENANCE OF TRAFFIC STANDARDS FOR ADDITIONAL SIGNING REQUIREMENTS.



REVISIONS	
NAME	DATE

ILLINOIS DEPARTMENT OF TRANSPORTATION  
 TEMPORARY INFORMATION SIGNING  
 STAGE 3-1  
 WB STA. 145+390 - STA. 145+730

DATE 11/23/04

DRAWN BY RDY  
 CHECKED BY LSA



11/23/04 11:02:33 2631 306 12/14/04 09:35:05 PM