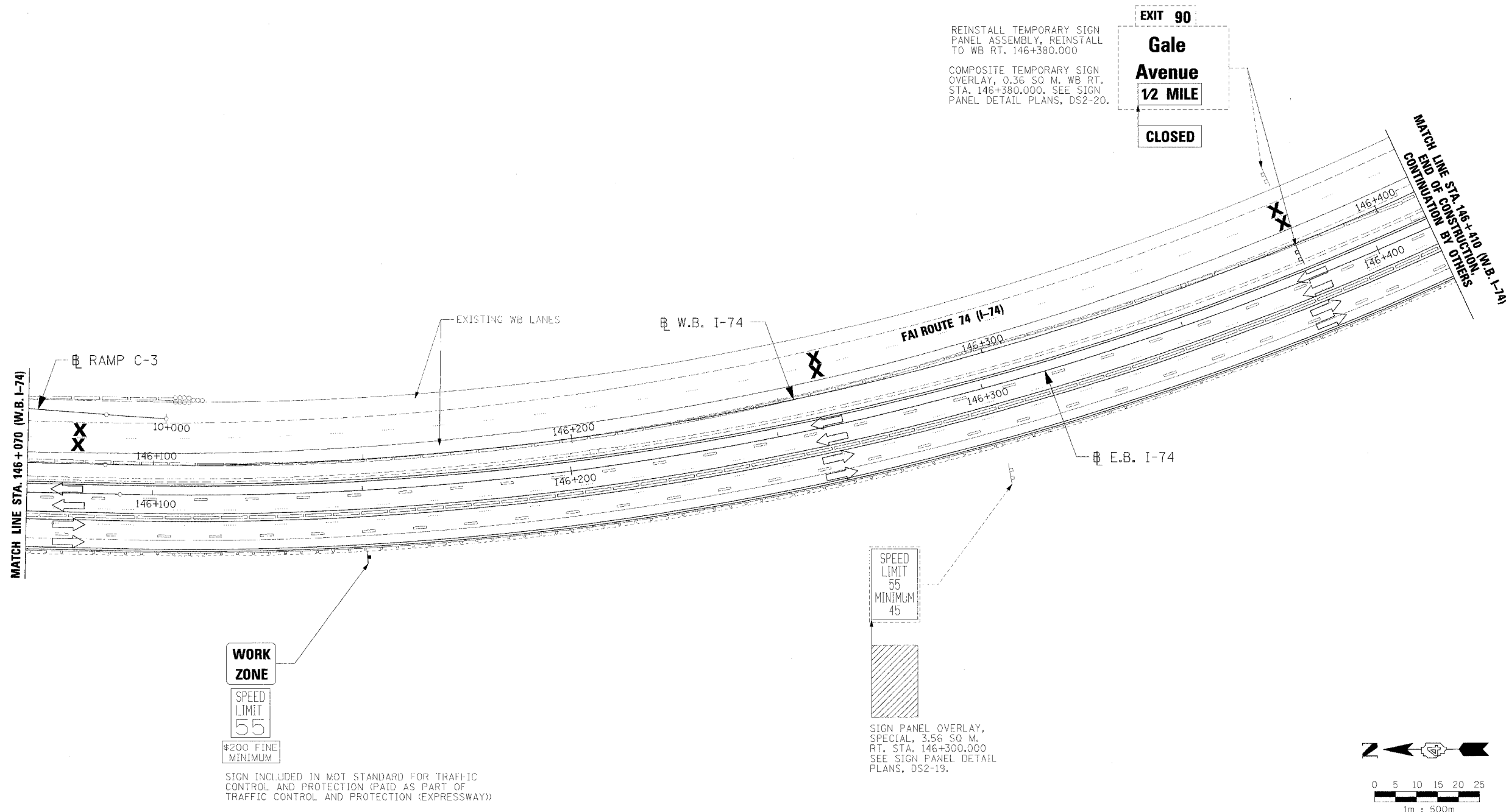


F.A.I. RTE.	SECTION	COUNTY	TOTAL SHEETS	SHEET NO.
74	(72-7)R-3	PEORIA	1364	752
STA. 146+070		TO STA. 146+410		
FED. ROAD DIST. NO.	ILLINOIS	FED. AID PROJECT		

NOTES:

- SEE PERMANENT SIGNING PLANS FOR ADDITIONAL INFORMATION.
- SEE APPLICABLE MAINTENANCE OF TRAFFIC STANDARDS FOR ADDITIONAL SIGNING REQUIREMENTS.



REINSTALL TEMPORARY SIGN PANEL ASSEMBLY, REINSTALL TO WB RT. 146+380.000
 COMPOSITE TEMPORARY SIGN OVERLAY, 0.36 SQ M. WB RT. STA. 146+380.000. SEE SIGN PANEL DETAIL PLANS, DS2-20.

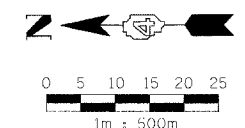
EXIT 90
Gale Avenue
1/2 MILE
CLOSED

WORK ZONE
SPEED LIMIT 55
 \$200 FINE MINIMUM

SPEED LIMIT 55
MINIMUM 45

SIGN PANEL OVERLAY, SPECIAL, 3.56 SQ M. RT. STA. 146+300.000 SEE SIGN PANEL DETAIL PLANS, DS2-19.

SIGN INCLUDED IN MOT STANDARD FOR TRAFFIC CONTROL AND PROTECTION (PAID AS PART OF TRAFFIC CONTROL AND PROTECTION (EXPRESSWAY))



REVISIONS		ILLINOIS DEPARTMENT OF TRANSPORTATION
NAME	DATE	
		TEMPORARY INFORMATION SIGNING STAGE 3-1 WB STA. 146+070 - STA. 146+410

DATE 11/23/04

DRAWN BY RDY
 CHECKED BY LSA



11/23/04 11:02:55 AM 1274704 66 33 09 W