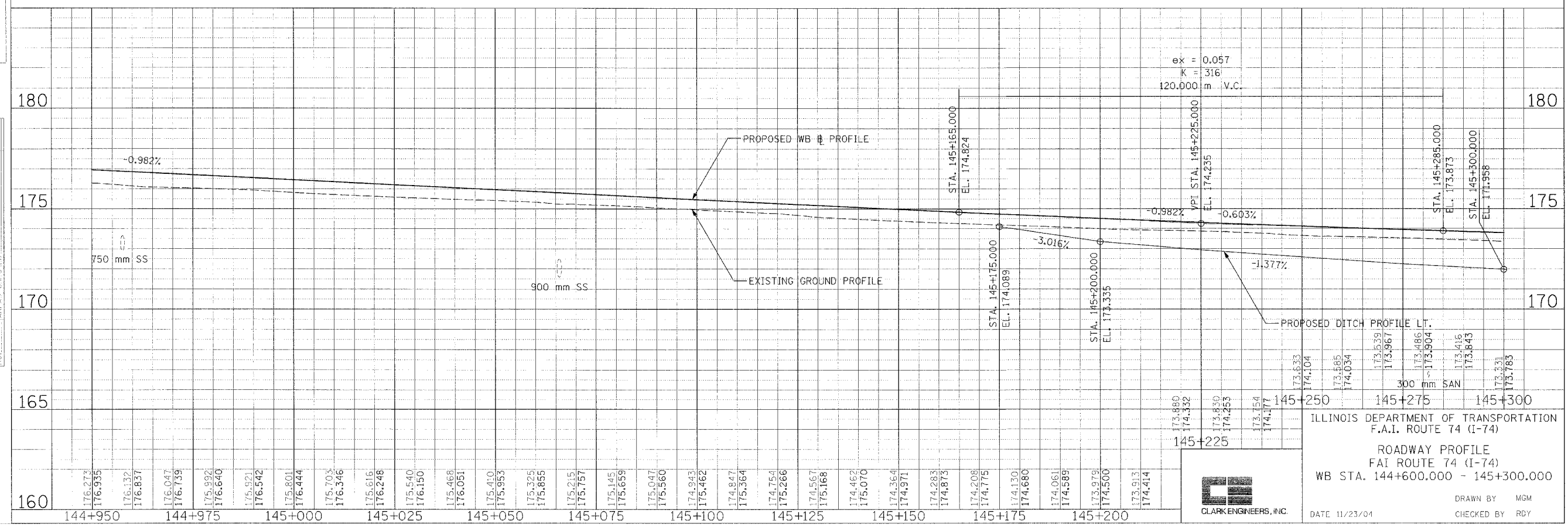
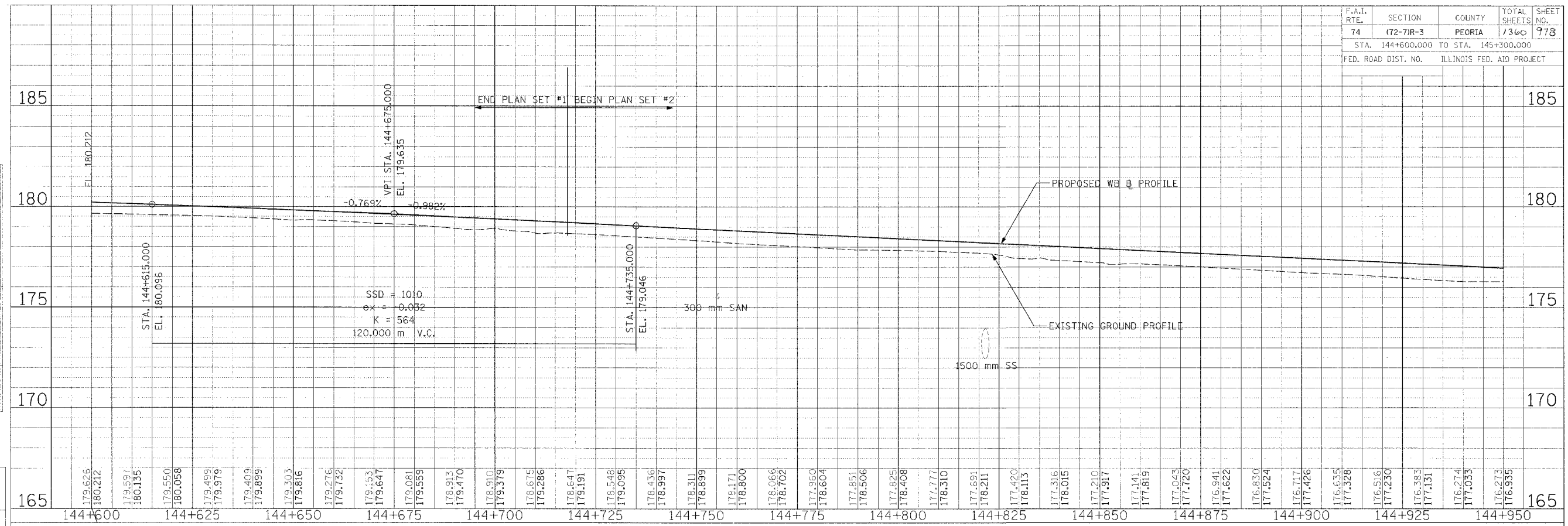


F.A.I. RTE.	SECTION	COUNTY	TOTAL SHEETS	SHEET NO.
74	(72-7)R-3	PEORIA	1300	978
STA. 144+600.000 TO STA. 145+300.000				
FED. ROAD DIST. NO. ILLINOIS FED. AID PROJECT				

FINAL SURVEY PLOTTED	BY	DATE
NOTE BOOK TEMPLATE AREAS CHECKED		

REVISIONS	NAME	DATE

ORIGINAL SURVEY PLOTTED	BY	DATE
NOTE BOOK TEMPLATE AREAS CHECKED		



ILLINOIS DEPARTMENT OF TRANSPORTATION
 F.A.I. ROUTE 74 (I-74)
 ROADWAY PROFILE
 WB STA. 144+600.000 - 145+300.000
 DATE 11/23/04
 DRAWN BY MGM
 CHECKED BY RDY