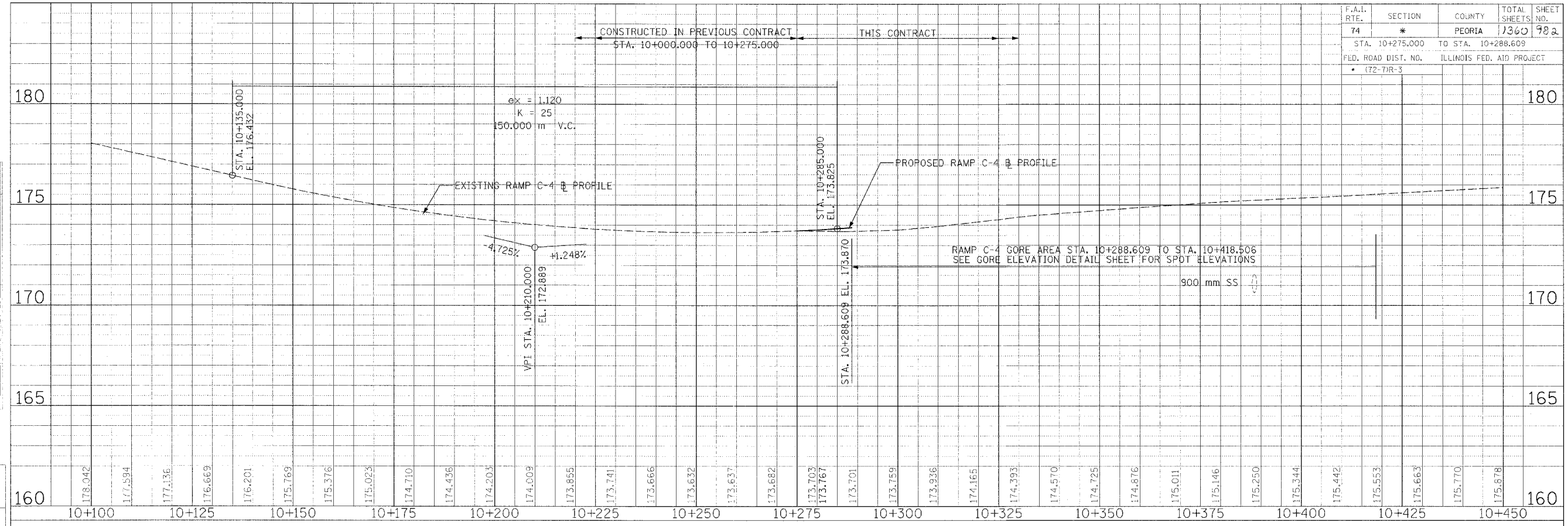


F.A.I. RTE.	SECTION	COUNTY	TOTAL SHEETS	SHEET NO.
74	*	PEORIA	1360	902
STA. 10+275.000		TO STA. 10+288.609		
FED. ROAD DIST. NO.		ILLINOIS FED. AID PROJECT		
		• (72-73R-3)		



FINAL SURVEYED SURVEY PLOTTED	BY	DATE
NOTE BOOK PLAT NO.		
AREAS CHECKED		

REVISIONS	NAME	DATE

ORIGINAL SURVEYED SURVEY PLOTTED	BY	DATE
NOTE BOOK PLAT NO.		
AREAS CHECKED		

ILLINOIS DEPARTMENT OF TRANSPORTATION
F.A.I. ROUTE 74 (I-74)

ROADWAY PROFILE
FAI ROUTE 74 (I-74) RAMP C-4
STA. 10+275.000 - STA. 10+288.609



DATE 11/23/04
DRAWN BY RDY
CHECKED BY LSA

...057988609 034-2047 001 12/7/04 10:36:40 AM