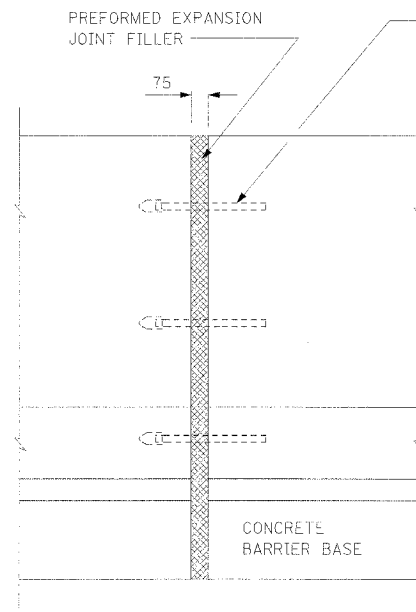
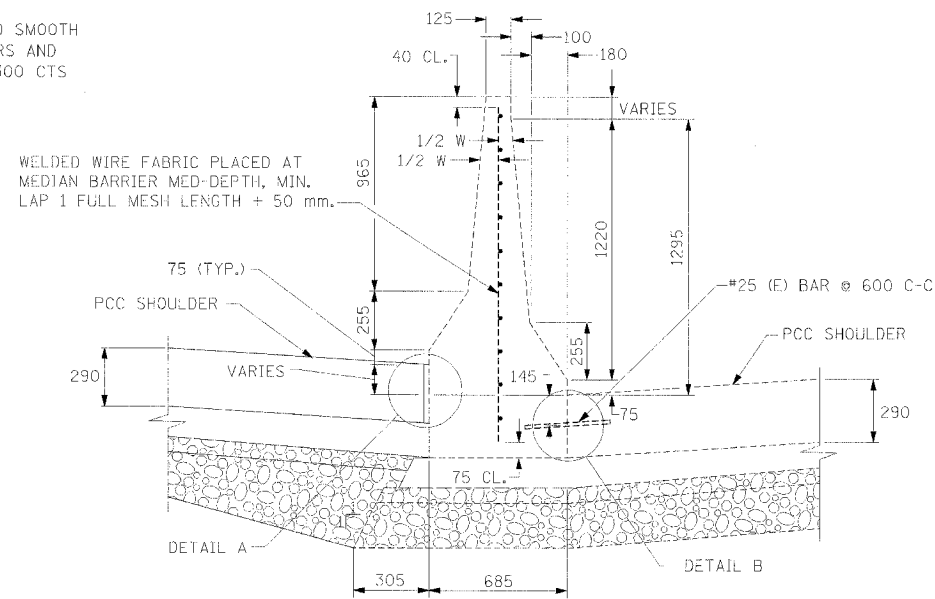


F.A.I. RTE.	SECTION	COUNTY	TOTAL SHEETS	SHEET NO.
74	(72-7R-3)	PEORIA	1360	1019
STA.	TO STA.			
FED. ROAD DIST. NO.	ILLINOIS	FED. AID PROJECT		



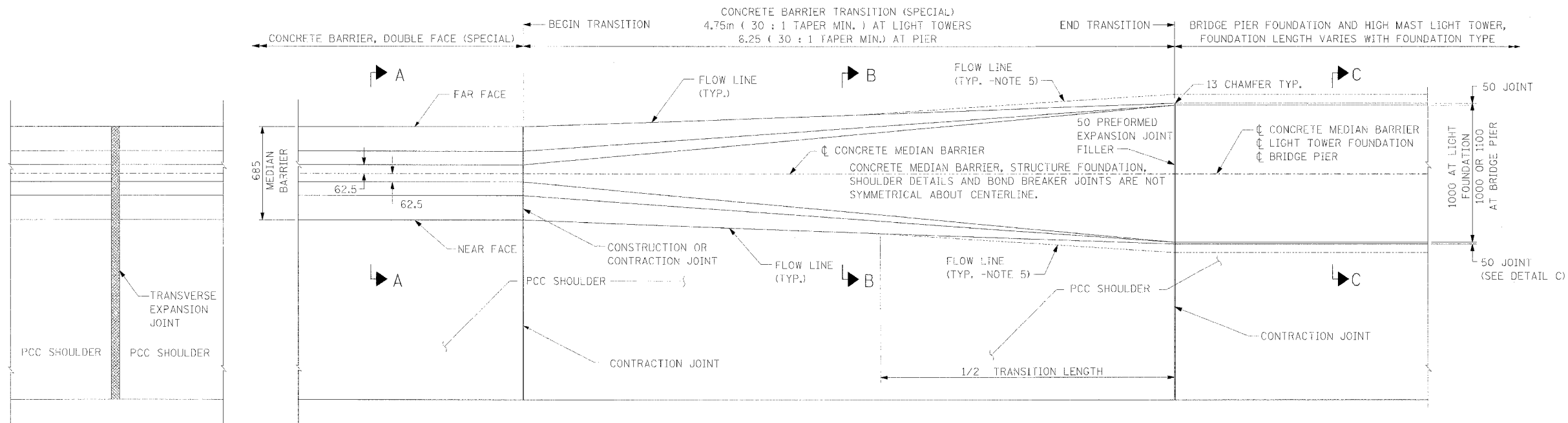
EXPANSION JOINT



SECTION A-A
MEDIAN BARRIER DETAIL
N.T.S.

NOTES:

1. ALL DIMENSIONS ARE IN MILLIMETERS (mm) UNLESS OTHERWISE SHOWN.
2. FOR SHOULDER AND UNDERDRAIN DETAILS SEE I-74 PROJECT STDS 483001-174 AND 601001-174 AND MAINLINE TYPICAL CROSS SECTIONS.
3. PROPOSED DRAINAGE PROFILE IN THE VICINITY OF SAG VERTICAL CURVES AND ALONG FLAT GRADES SHALL BE CAREFULLY CONTROLLED AND FIELD ADJUSTED IF NECESSARY TO ENSURE POSITIVE DRAINAGE AND AVOID PONDING.
4. REINFORCING SHALL BE SECURELY TIED IN THE FINAL POSITION PRIOR TO THE CONCRETE OPERATIONS.
5. PCC SHOULDER CONTRACTION JOINTS SHOULD BE ALIGNED WITH MEDIAN BARRIER CONTRACTION JOINTS AND EXPANSION JOINTS.
6. TRANSVERSE EXPANSION JOINT THRU THE PAVEMENT AND THE SHOULDER SHALL BE EXTENDED THRU THE CONCRETE BARRIER.



PLAN

TRANSITION SIMM. & OPPOSITE HAND
OTHER SIDE OF FOUNDATION

REVISIONS	
NAME	DATE



ILLINOIS DEPARTMENT OF TRANSPORTATION
MISCELLANEOUS ROADWAY DETAILS
CONCRETE BARRIER,
DOUBLE FACE (SPECIAL)

DATE 11/23/04
DRAWN BY ECS
CHECKED BY LLV

11/23/04 10:25:38 AM