

All Dimensions are in millimeters (mm) unless noted otherwise.

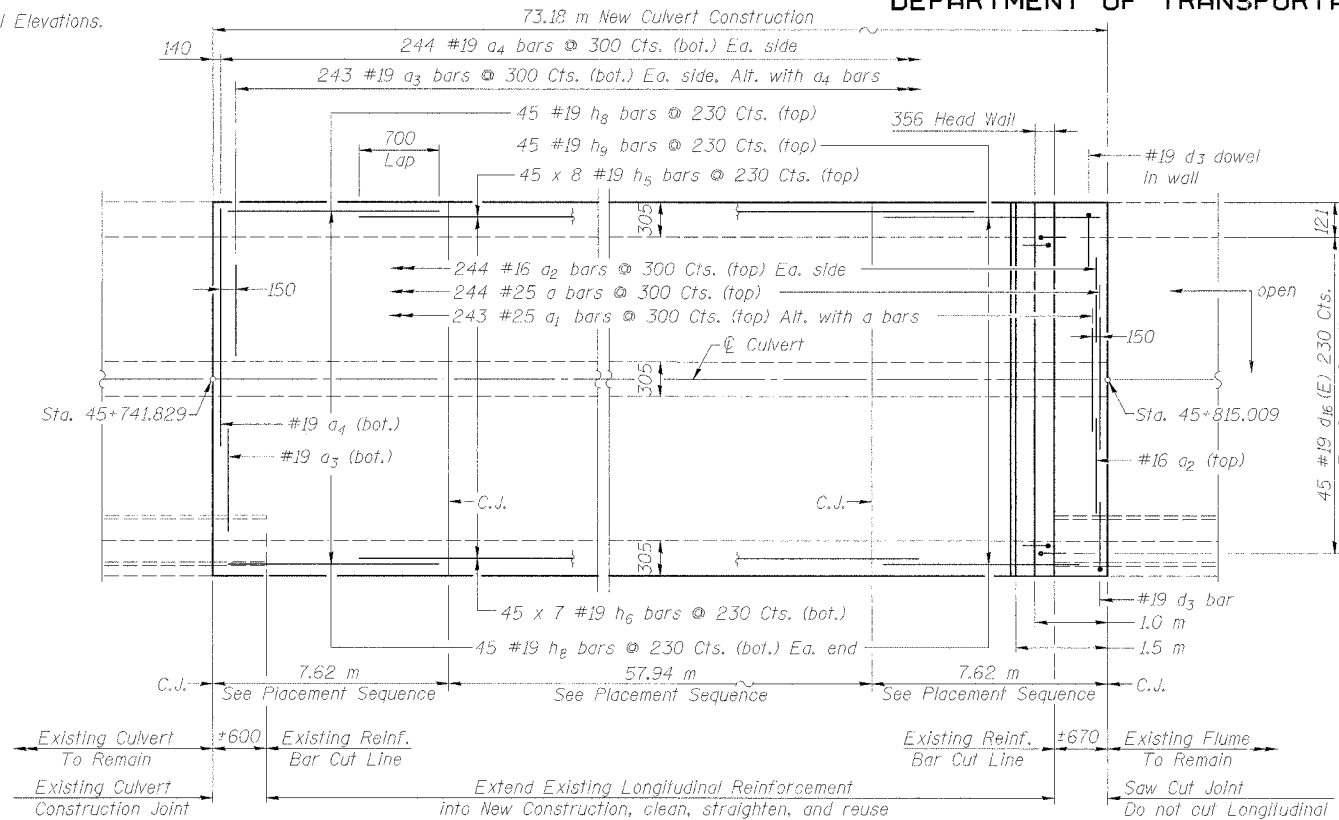
See Cross Section Sheet 11 of 15 for Reinforcement Location.

See Sheet 7 of 15 for Wall Elevations.

STATE OF ILLINOIS
DEPARTMENT OF TRANSPORTATION

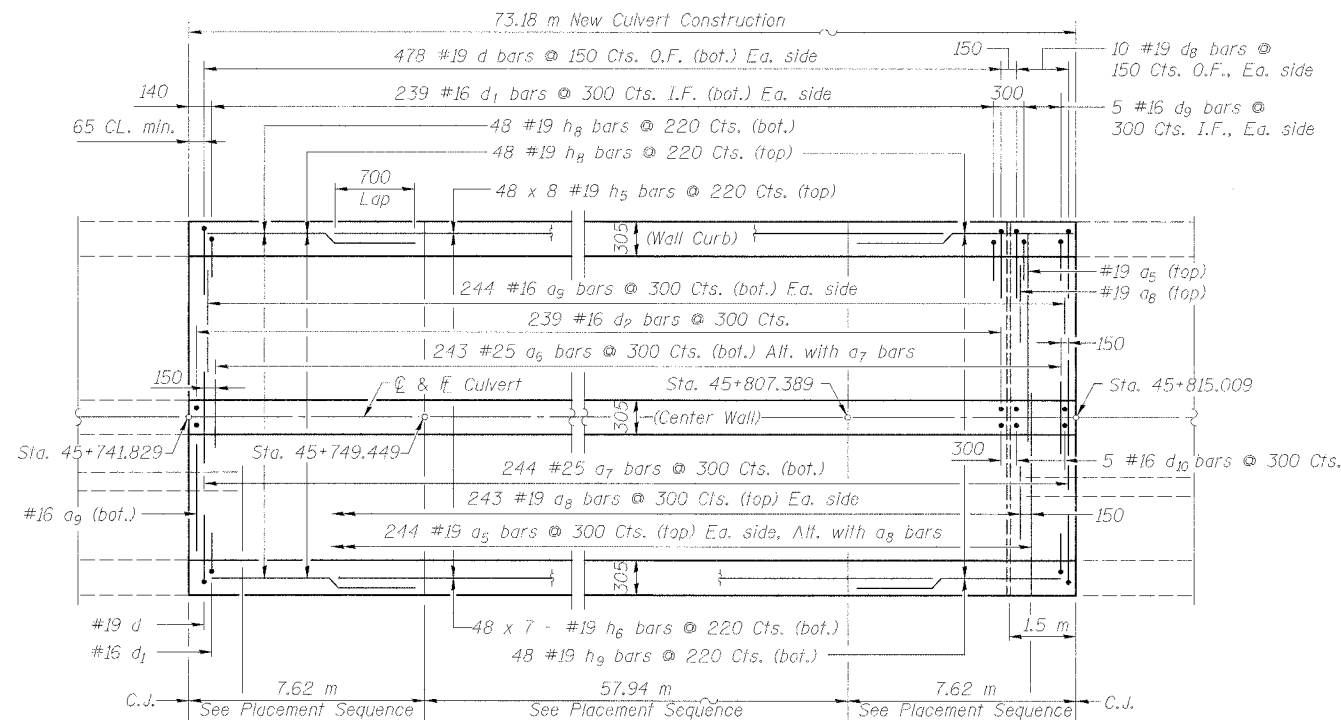
ROUTE NO.	SECTION	COUNTY	TOTAL SHEETS	SHEET NO.	SHEET NO. 6 of 15 SHEETS
F.A.I. 74	*	PEORIA	1360	1028	
FED. ROAD DIST. NO. 7	ILLINOIS	FED. AID PROJECT			

* (72-7)R-3 Contract 68200



SOUTH CULVERT EXTENSION - TOP SLAB PLAN

C.J. = Construction Joint, See Placement Sequence



SOUTH CULVERT EXTENSION - BOTTOM SLAB PLAN

C.J. = Construction Joint, See Placement Sequence

DESIGNED	LLV
CHECKED	PJL
DRAWN	MGM
CHECKED	LLV

BILL OF MATERIAL

For South Culvert Extension
Culvert Sta. 45+741.829 to Sta. 45+815.009

Bar	No.	Size	Length (m)	Shape
a	244	#25	4.80	
a1	243	#25	3.60	
a2	488	#16	2.53	
a3	486	#19	3.18	
a4	488	#19	5.45	
a5	488	#19	5.50	
a6	243	#25	3.60	
a7	244	#25	4.80	
a8	486	#19	3.28	
a9	488	#16	2.57	
d	956	#19	2.58	
d1	478	#16	1.49	
d2	239	#16	2.61	
d3	956	#19	2.55	
d8	20	#19	2.73	
d9	10	#16	1.64	
d10	5	#16	2.91	
d11	20	#19	2.70	
d16 (E)	90	#19	1.93	
h5	744	#19	8.00	
h6	651	#19	9.05	
h7	406	#16	8.92	
h8	279	#19	7.57	
h9	93	#19	7.63	
h10	116	#16	7.57	
h11 (E)	6	#16	10.28	
h12 (E)	7	#16	7.70	
h13 (E)	2	#16	8.52	
v	988	#19	2.50	
v1	492	#16	3.08	
v2	488	#16	3.67	
v5 (E)	32	#16	3.94	
x	16	#19	2.22	
Item	Unit	Qty.		
Reinforcement Bars	kg	102,900		
Concrete Box Culverts	m ³	1,041.8		
Concrete Removal	m ³	458.6		
Reinforcement Bars, Epoxy Coated	kg	790		

Bars indicated thus:
55 x 3 #19 bars indicates 55 lines of #19 bars with 3 lengths per line, typ.

Reinforcement bars designated (E) shall be epoxy coated.

PLACEMENT SEQUENCE

- Center portion of slabs are placed first.
- 7 days shall pass between time of center portion placement and end portions of culvert slabs.

**PLAN TOP SLAB & BOTTOM SLAB
SOUTH CULVERT EXTENSION
RAMP C-3 OVER DRY RUN CREEK
F.A.I. ROUTE 74(I-74) SECTION (72-7)R-3
PEORIA COUNTY
STATION 10+277.51 TO
STA. 10+441.66 (RAMP C-3)
STRUCTURE NUMBER 072-2005**



111 NE Jefferson Ave.
Peoria, Illinois 61602
Ph(309)676-8464
FAX(309)676-5445