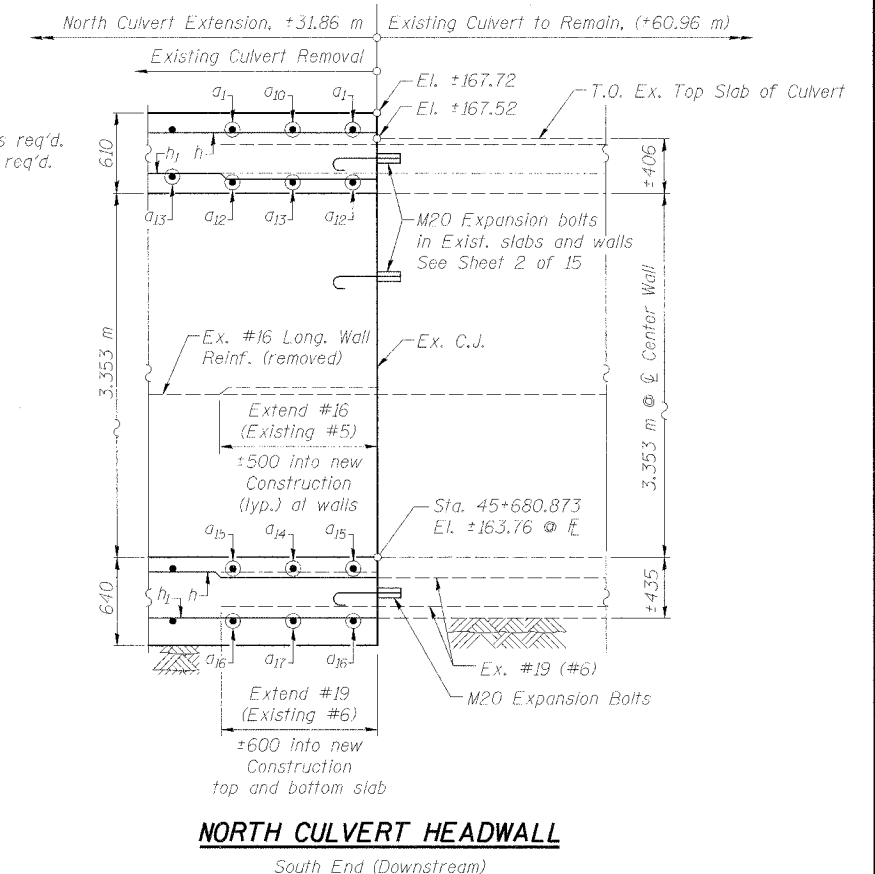
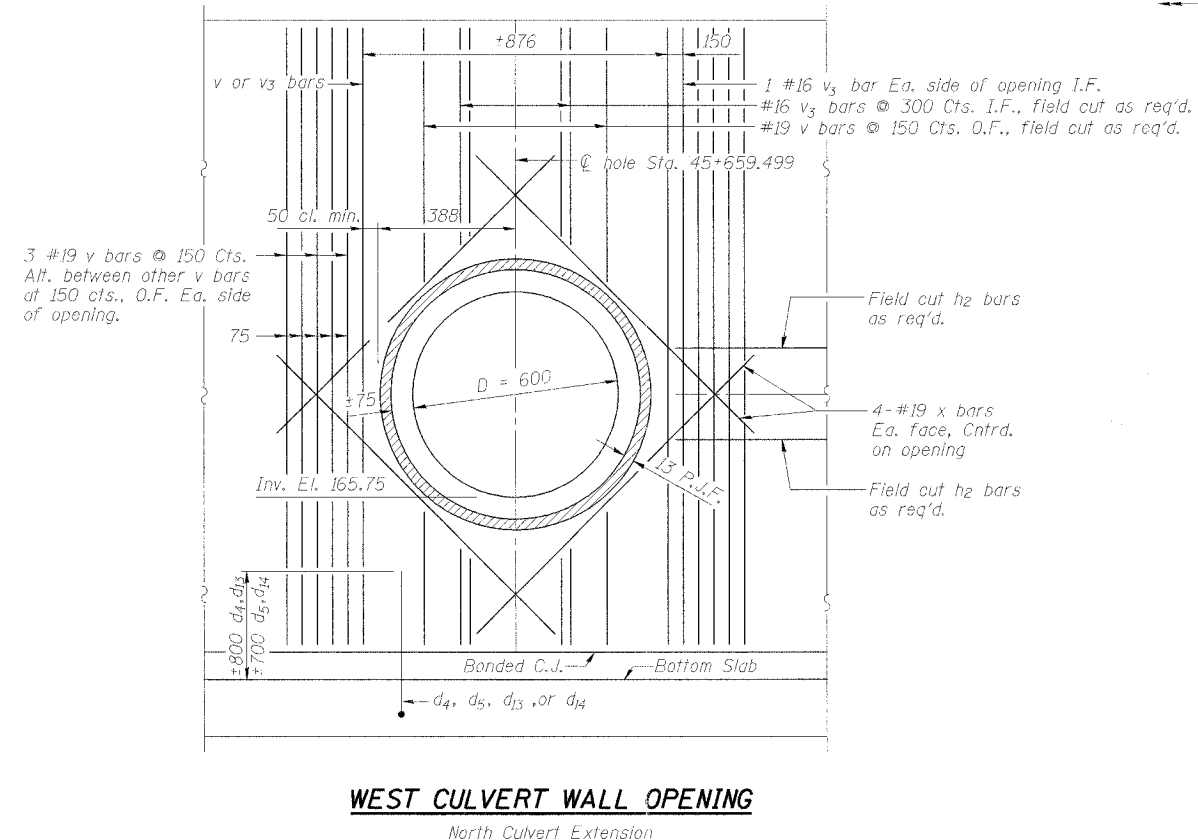
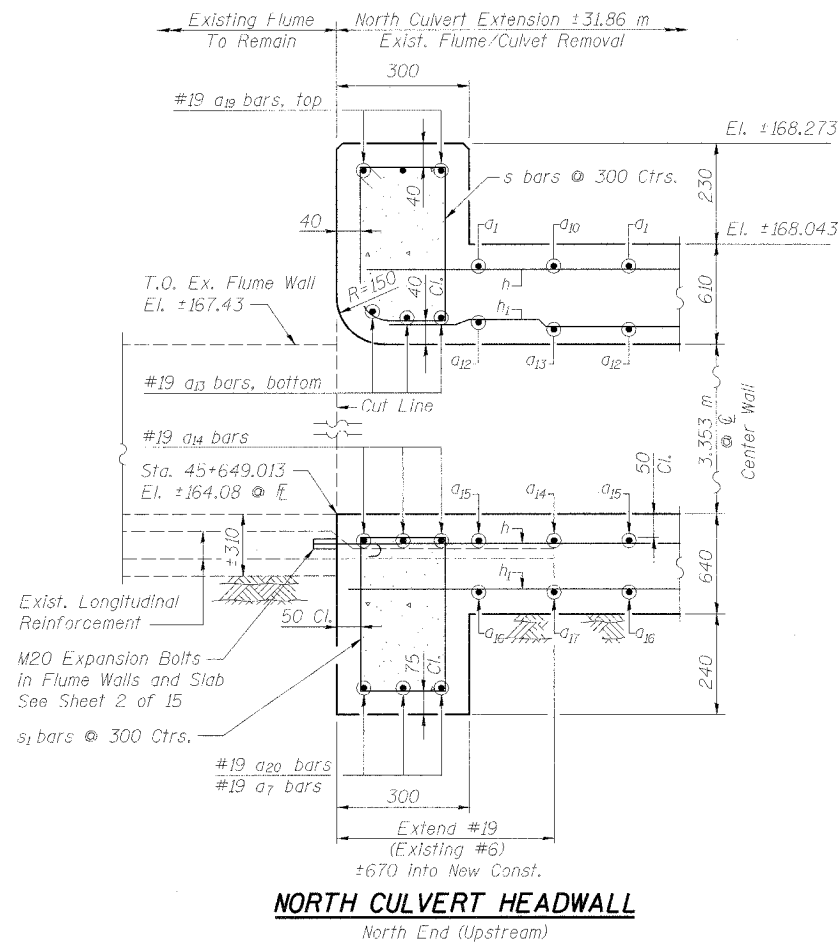


All Dimensions are in millimeters (mm) unless noted otherwise.

STATE OF ILLINOIS
DEPARTMENT OF TRANSPORTATION

ROUTE NO.	SECTION	COUNTY	TOTAL SHEETS	SHEET NO.	SHEET NO. 8 of 15 SHEETS
F.A.I. 74	*	PEORIA	1360	1030	
FED. ROAD DIST. NO. 7	ILLINOIS	FED. AID PROJECT			

* (72-7)R-3 Contract 68200



HEADWALL & WALL OPENING DETAILS
NORTH CULVERT EXTENSION
RAMP C-3 OVER DRY RUN CREEK
F.A.I. ROUTE 74(I-74) SECTION (72-7)R-3
PEORIA COUNTY
STATION 10+277.51 TO
STA. 10+441.66 (RAMP C-3)
STRUCTURE NUMBER 072-2005

DESIGNED	LLV
CHECKED	P.JL
DRAWN	MGM
CHECKED	LLV



111 NE Jefferson Ave.
Peoria, Illinois 61602
Ph(309)676-8464
Fax(309)676-5445

11/15/08 10:20:05 AM