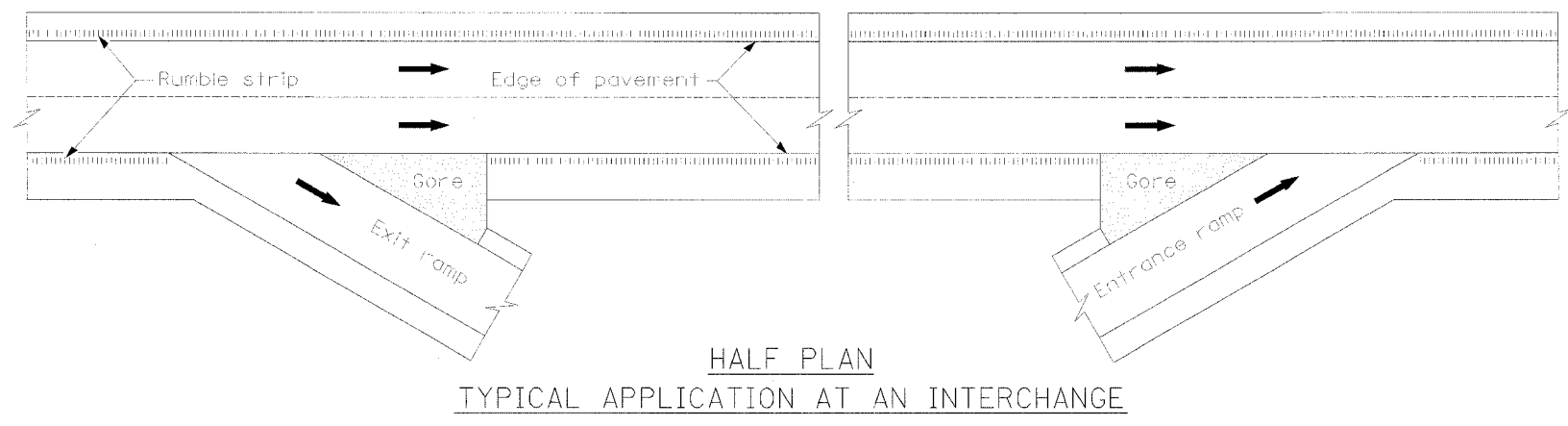
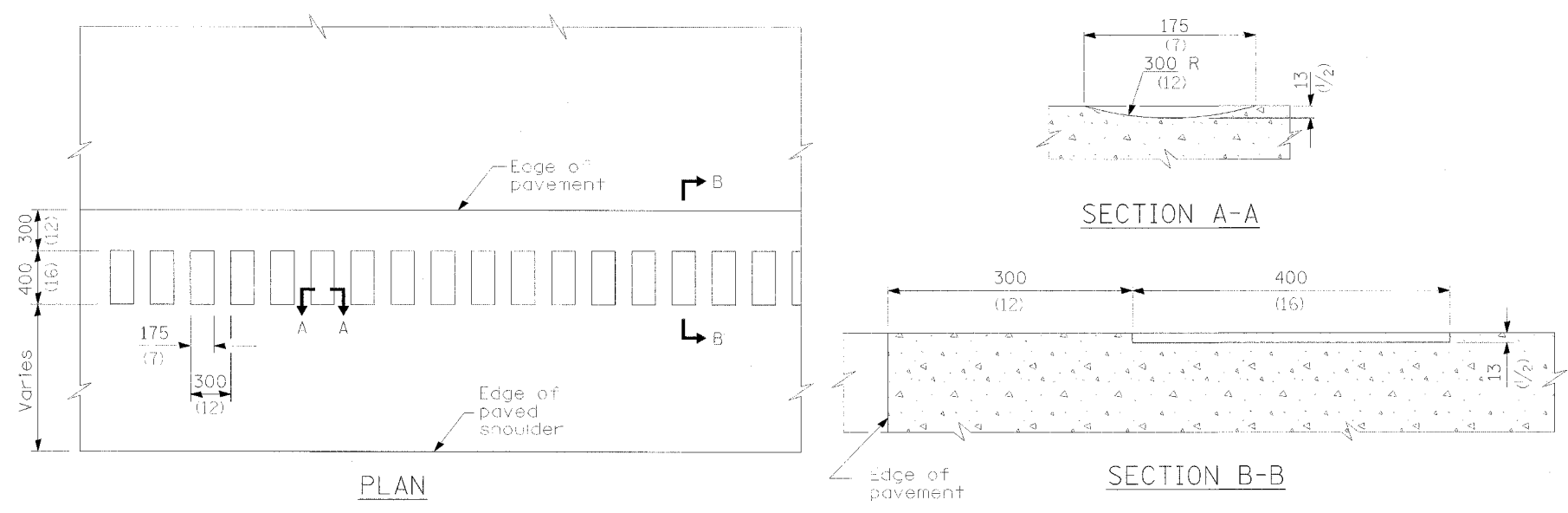


F.A. RTE.	SECTION	COUNTY	TOTAL SHEETS	SHEET NO.
			1360	1071
STA.	TO STA.			
FED. ROAD DIST. NO.	ILLINOIS	FED. AID PROJECT		



HALF PLAN
TYPICAL APPLICATION AT AN INTERCHANGE

GENERAL NOTES

On Portland cement concrete shoulders, no shoulder rumble strip shall be located closer than 150 mm (6") to a transverse joint.

Omit shoulder rumble strips across structures.

All dimensions are in millimeters (inches) unless otherwise shown.

REVISIONS		ILLINOIS DEPARTMENT OF TRANSPORTATION
NAME	DATE	
		I-74 PROJECT STANDARD 642001-I74
		I-74 SHOULDER RUMBLE STRIPS
		DRAWN BY
		CHECKED BY
		DATE 06/10/04