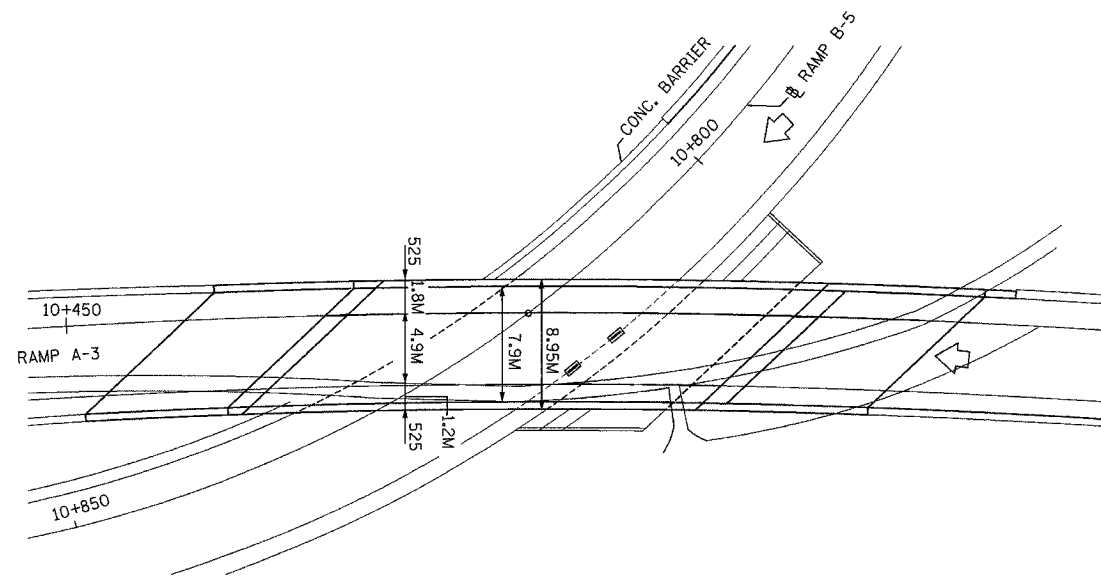
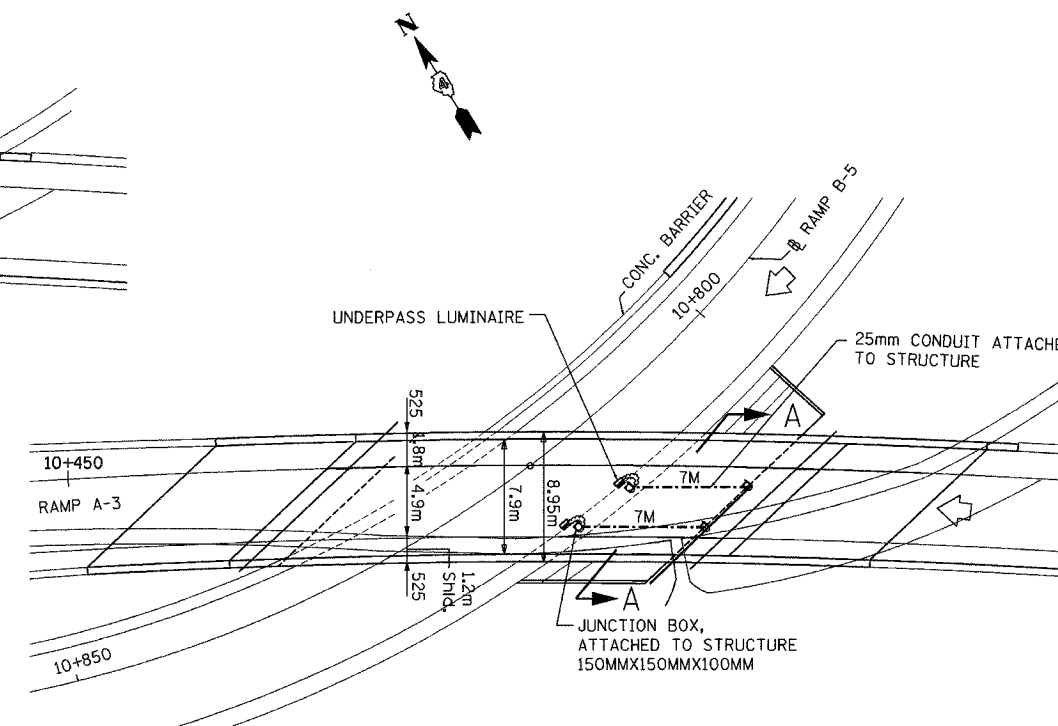


F.A.I. RTE.	SECTION	COUNTY	TOTAL SHEETS	SHEET NO.
74	(72-71R-3)	PEORIA	1360	1207
STA.	TO STA.			
FED. ROAD DIST. NO.	ILLINOIS	FED. AID PROJECT		

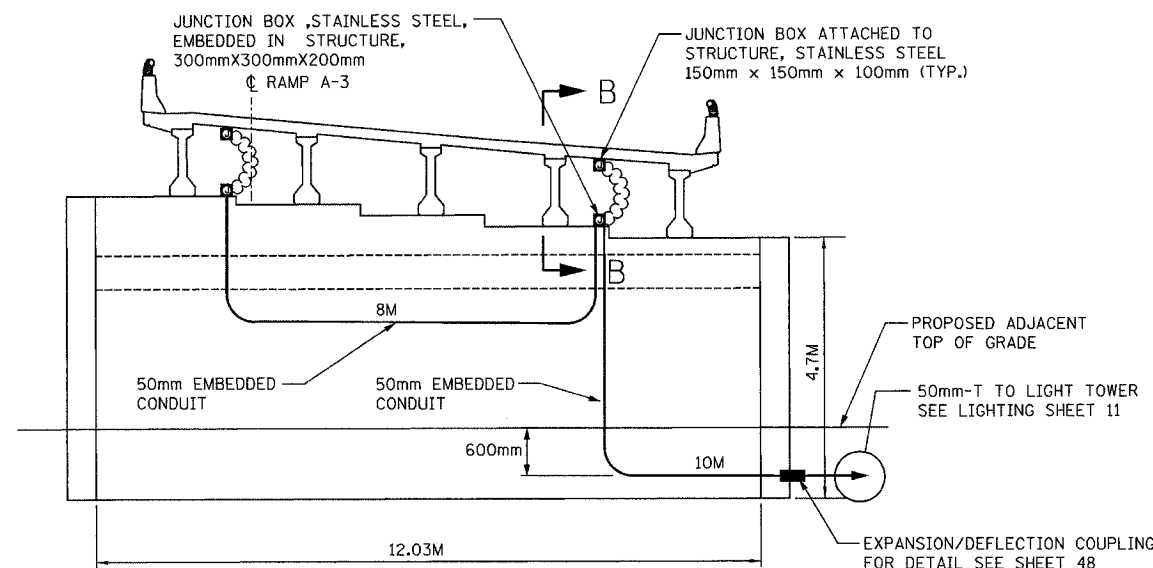
CONTRACT NO. 68200



PLAN VIEW
EMBEDDED CONCRETE INSERTS



LUMINAIRE, ATTACHED CONDUIT & JUNCTION BOXES



SECTION AA
EAST ABUTMENT ELEVATION

STREET LIGHTING - BILL OF MATERIAL THIS SHEET

PAY ITEM	UNIT	QUANTITY
CONDUIT ATTACHED TO STRUCTURE, 25MM DIA., GALVANIZED STEEL	METER	14.0
CONDUIT EMBEDDED IN STRUCTURE, 50MM DIA., PVC	METER	18.0
JUNCTION BOX, STAINLESS STEEL, ATTACHED TO STRUCTURE, 150MMX150MMX100MM	EACH	4
JUNCTION BOX, STAINLESS STEEL, EMBEDDED IN STRUCTURE, 300MMX300MMX200MM	EACH	2
UNDERPASS LUMINAIRE, (INSTALL ONLY)	EACH	2

NOTES:

- ALL EMBEDDED CONDUIT SHALL BE 50mm, PVC - SCH. 40, UNLESS OTHERWISE INDICATED.
- ALL JUNCTION BOXES ATTACHED TO STRUCTURE SHALL BE STAINLESS STEEL, 150mmx150mmx100mm, UNLESS OTHERWISE NOTED.
- ALL JUNCTION BOXES EMBEDDED IN STRUCTURE SHALL BE STAINLESS STEEL, 300mmx300mmx200mm, UNLESS OTHERWISE NOTED.
- ALL CONDUIT BENDS AND RADII SHALL BE IN ACCORDANCE WITH IDOT STANDARD SPECIFICATIONS.
- FOR SECTION B-B, SEE SHEET 24

LEGEND

- PROPOSED JUNCTION BOX
- PROPOSED ATTACHED CONDUIT, 25mm DIA., GALVANIZED STEEL
- PROPOSED EMBEDDED CONDUIT, 50mm DIA., PVC SCHEDULE 40
- PROPOSED LIQUID-TIGHT FLEXIBLE CONDUIT, 25mm
- EMBEDDED CONCRETE INSERT (SEE DETAIL SHEET #46)
- UNDERPASS LUMINAIRE, HPSV, 100 WATT, 240 VOLT (SEE DETAIL SHEET #46).

LIGHTING SHEET 23 OF 64

REVISIONS	
NAME	DATE

ILLINOIS DEPARTMENT OF TRANSPORTATION

BRIDGE LIGHTING PLAN
RAMP A-3 OVER RAMP B-5

DATE: 11/12/04

DRAWN BY DJK
CHECKED BY MKR

ab **alfred benesch & company**
CONSULTING ENGINEERS
205 NORTH MICHIGAN AVENUE, CHICAGO, ILLINOIS 60601

m:\proj\3573\LIGHTING\4-Contract 1011001-7abr-A3.dgn

3:56:19 PM

11/15/2004