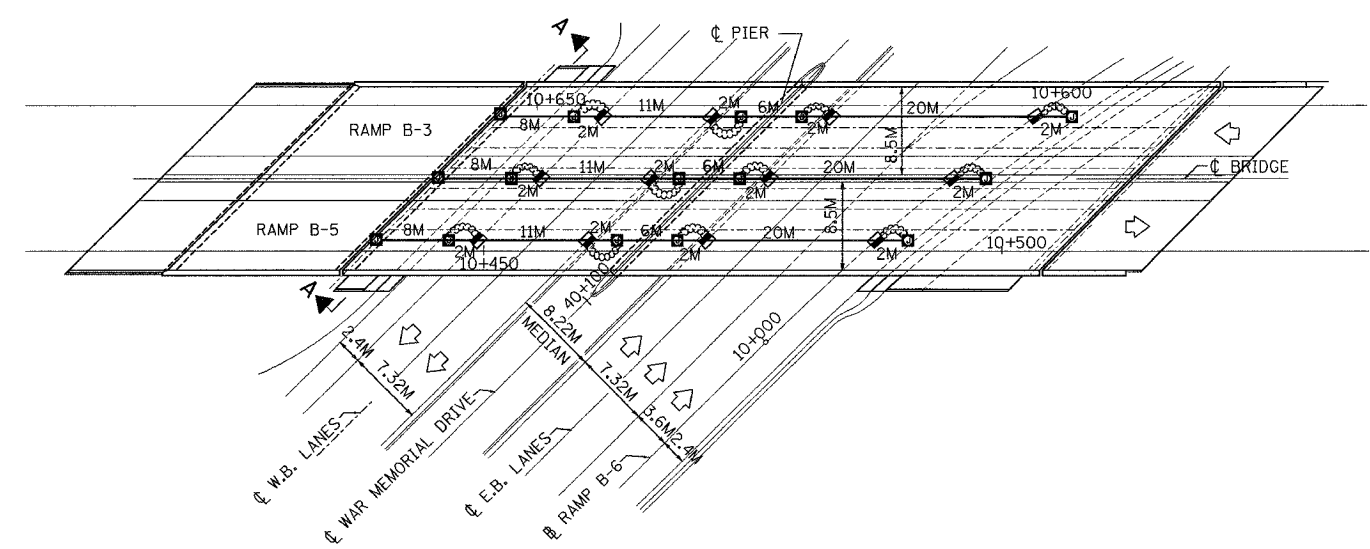


F.A.I. RTE.	SECTION	COUNTY	TOTAL SHEETS	SHEET NO.
74	(72-71R-3)	PEORIA	1360	1210
STA.		TO STA.		
FED. ROAD DIST. NO.		ILLINOIS	FED. AID PROJECT	

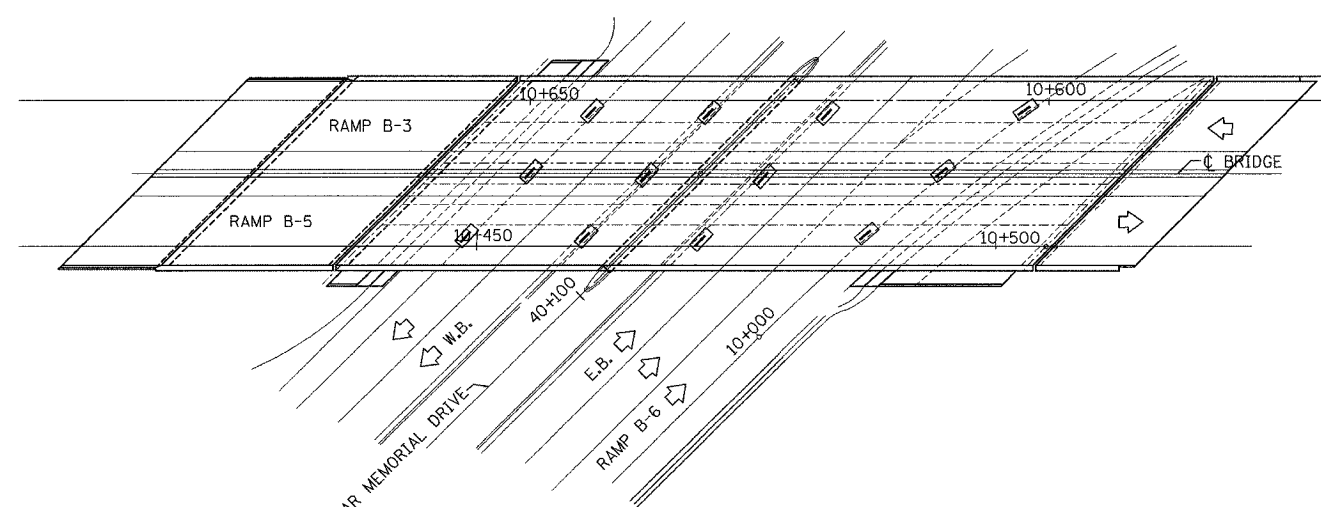
CONTRACT NO. 68200

STREET LIGHTING - BILL OF MATERIAL - THIS SHEET

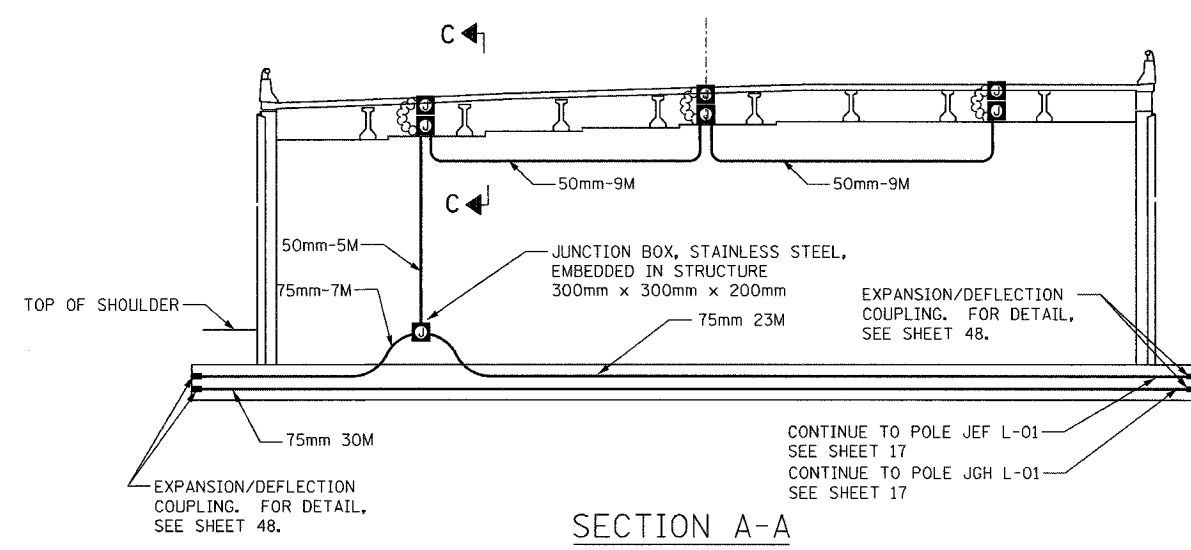
PAY ITEM	UNIT	QTY.
CONDUIT ATTACHED TO STRUCTURE, 25mm DIA., GALVANIZED STEEL	METER	159.0
CONDUIT EMBEDDED IN STRUCTURE, 50mm DIA. PVC	METER	23.0
CONDUIT EMBEDDED IN STRUCTURE, 75mm DIA. PVC	METER	60.0
JUNCTION BOX, STAINLESS STEEL, ATTACHED TO STRUCTURE, 150mm X 150mm X 100mm	EACH	15
JUNCTION BOX, STAINLESS STEEL, EMBEDDED IN STRUCTURE, 300mm X 300mm X 200mm	EACH	4
UNDERPASS LUMINAIRE, (INSTALL ONLY)	EACH	12



PLAN VIEW
ATTACHED CONDUIT & JUNCTION BOXES



PLAN VIEW
EMBEDDED CONCRETE INSERTS



SECTION A-A

NOTES:

- ALL EMBEDDED CONDUIT SHALL BE 50mm, PVC - SCH. 40, UNLESS OTHERWISE INDICATED.
- ALL JUNCTION BOXES ATTACHED TO STRUCTURE SHALL BE STAINLESS STEEL, 150mmx150mmx100mm, UNLESS OTHERWISE NOTED.
- ALL JUNCTION BOXES EMBEDDED IN STRUCTURE SHALL BE STAINLESS STEEL, 300mmx300mmx200mm, UNLESS OTHERWISE NOTED.
- ALL CONDUIT BENDS AND RADII SHALL BE IN ACCORDANCE WITH IDOT STANDARD SPECIFICATIONS.
- FOR SECTION B-B, SEE SHEET 24

LEGEND

- PROPOSED JUNCTION BOX
- PROPOSED ATTACHED CONDUIT, 25mm DIA., GALVANIZED STEEL
- PROPOSED EMBEDDED CONDUIT, 50mm DIA. PVC SCHEDULE 40
- PROPOSED LIQUID-TIGHT FLEXIBLE CONDUIT, 25mm
- EMBEDDED CONCRETE INSERT (SEE DETAIL SHEET #46)
- UNDERPASS LUMINAIRE, HPSV, 100 WATT, 240 VOLT (SEE DETAIL SHEET #46).

LIGHTING SHEET 26 OF 64

REVISIONS	
NAME	DATE

ILLINOIS DEPARTMENT OF TRANSPORTATION
BRIDGE LIGHTING PLAN
RAMPS B-3, B-5 OVER WAR MEMORIAL DR.
DRAWN BY DJK
CHECKED BY MKR
DATE: 11/12/04

ab **alfred benesch & company**
CONSULTING ENGINEERS
205 NORTH MICHIGAN AVENUE, CHICAGO, ILLINOIS 60601

m:\p\013573\LIGHTING\74-Contract ID\11001-Tabr-wml.dgn 8/16/04 AM 11/15/2004