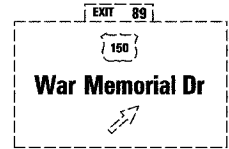
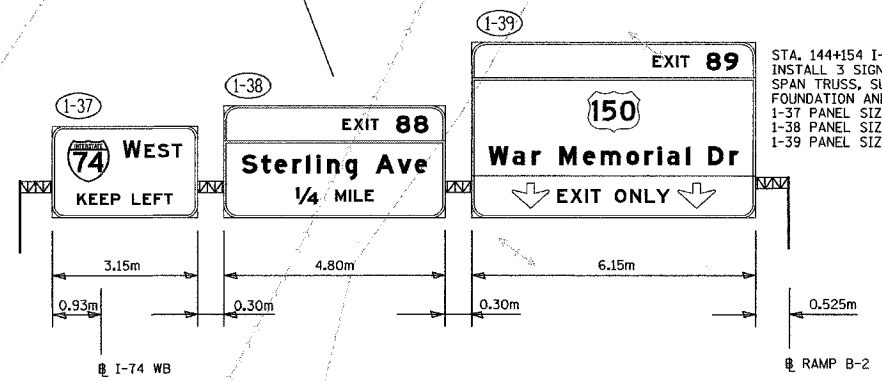
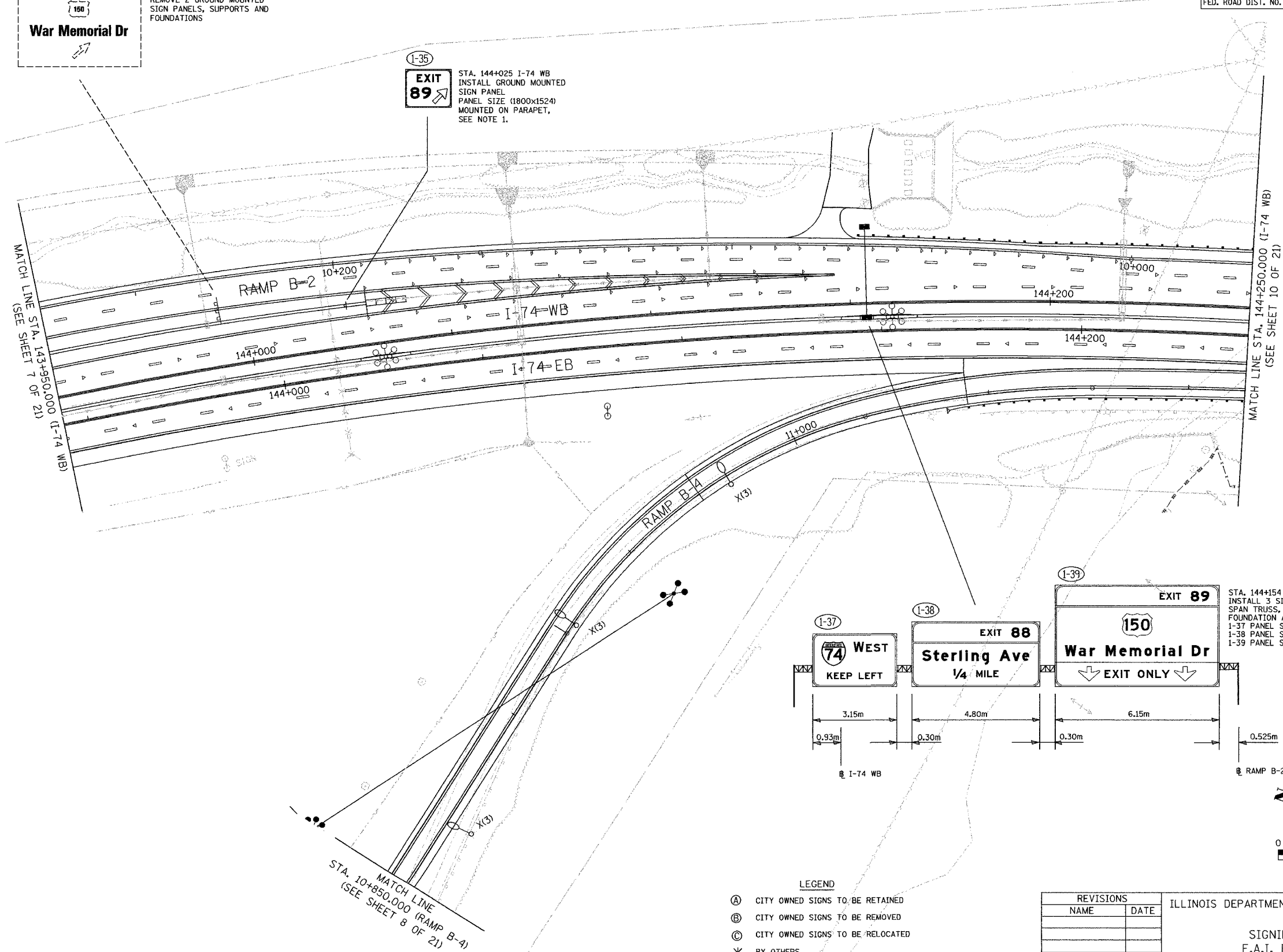
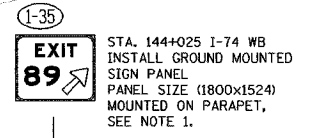


F.A.I. RTE.	SECTION	COUNTY	TOTAL SHEETS	SHEET NO.
74	(72-7R-3)	PEORIA	1360	1275
STA. 143+950.000 TO STA. 144+250.000				
FED. ROAD DIST. NO.	ILLINOIS	FED. AID PROJECT		
CONTRACT NO. 68200				



REMOVE 2 GROUND MOUNTED SIGN PANELS, SUPPORTS AND FOUNDATIONS



STA. 144+154 I-74 WB
INSTALL 3 SIGN PANELS, OVERHEAD SPAN TRUSS, SUPPORTS, OUTSIDE FOUNDATION AND ACCESSORIES
1-37 PANEL SIZE (3150x1981)
1-38 PANEL SIZE (4800x2438)
1-39 PANEL SIZE (6150x3810)



NOTES
1. REFER TO STANDARD DETAIL 733002-174 AND SPECIAL PROVISION "SIGN SUPPORT, PARAPET MOUNTED, TYPE 1".

- LEGEND**
- (A) CITY OWNED SIGNS TO BE RETAINED
 - (B) CITY OWNED SIGNS TO BE REMOVED
 - (C) CITY OWNED SIGNS TO BE RELOCATED
 - * BY OTHERS
 - (3-88) NON-STANDARD SIGN NUMBER

REVISIONS	
NAME	DATE

ILLINOIS DEPARTMENT OF TRANSPORTATION

SIGNING PLAN
F.A.I. ROUTE 74
STA. 143+950 TO STA. 144+250
(SHEET 9 OF 21)

SCALE 1:500
DATE 11/13/2004
DRAWN BY MEG
CHECKED BY BCG



11/13/2004 11:13:20 AM c:\work\project\143950\143950_9.dgn