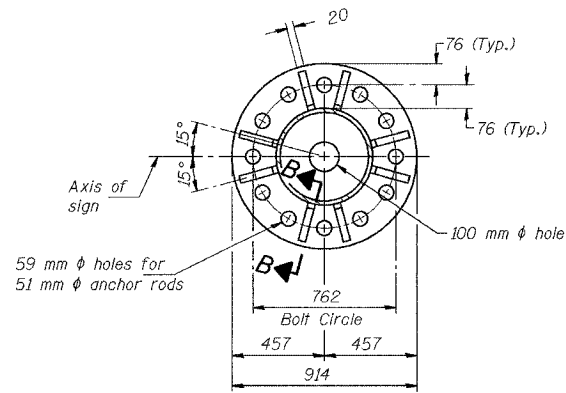
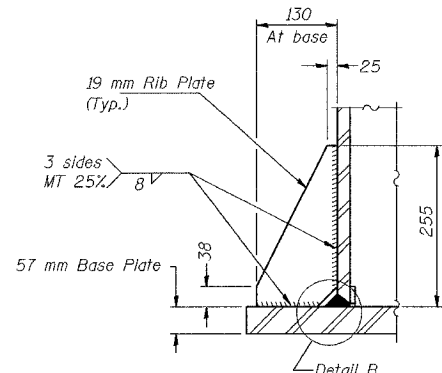


STATE OF ILLINOIS  
DEPARTMENT OF TRANSPORTATION

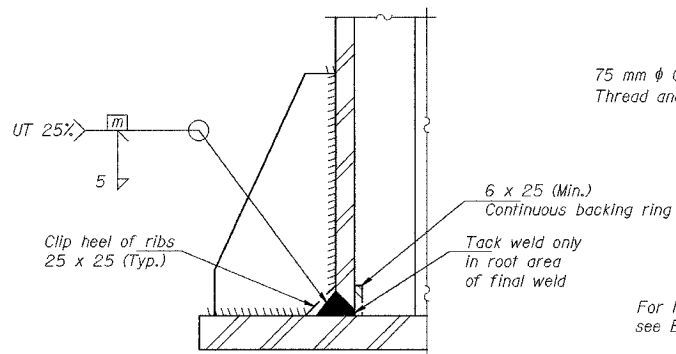
ROUTE No.	SECTION	COUNTY	TOTAL SHEETS	SHEET NO.
FAI 74	*	PEORIA	1360	1312
STA.		TO STA.		
F.H.W.A. REGION		ILLINOIS	PROJECT	
*(72-7R-3		CONTRACT NO. 68200		



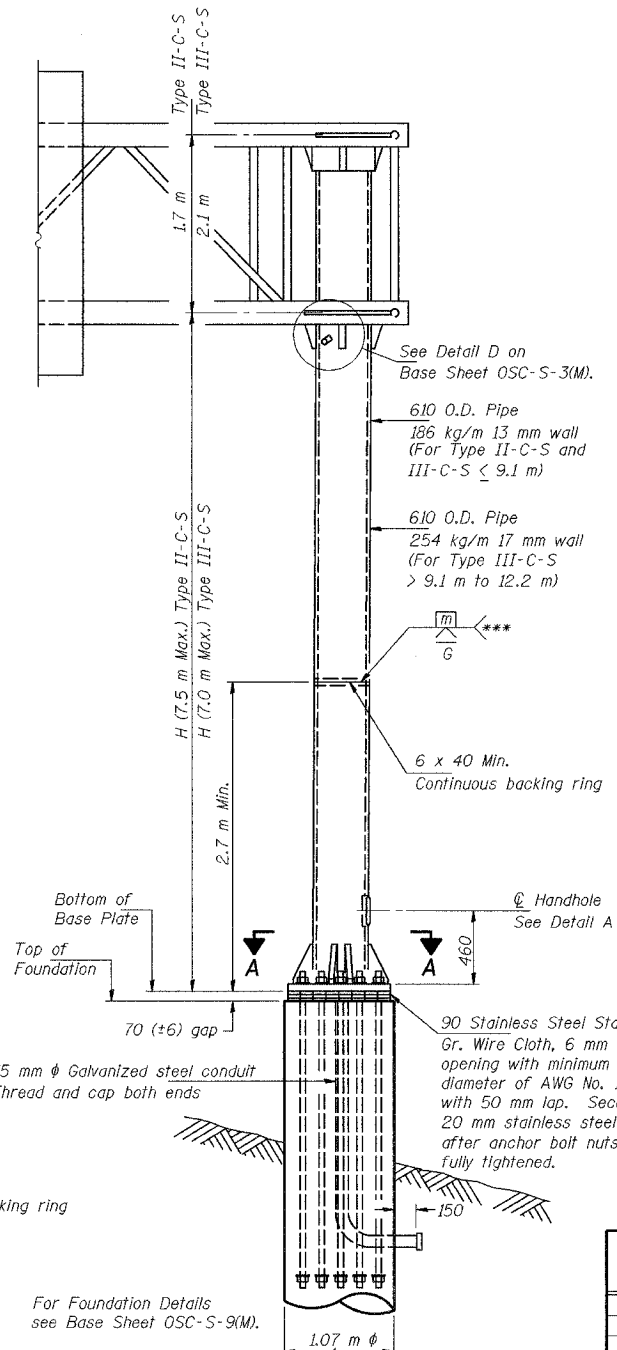
SECTION A-A



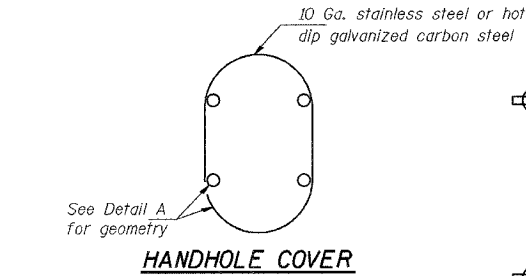
SECTION B-B



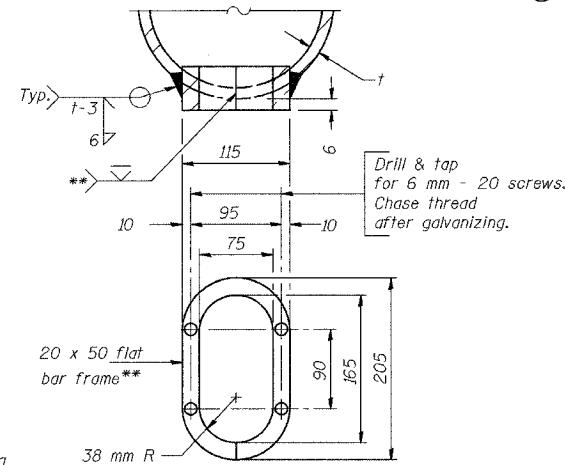
DETAIL B  
(Typical rib)



FRONT ELEVATION



HANDHOLE COVER

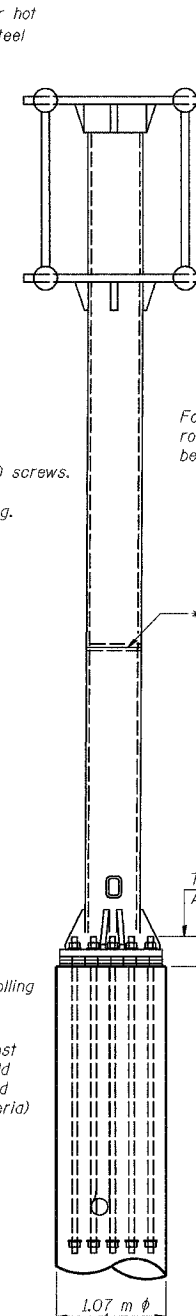


DETAIL A

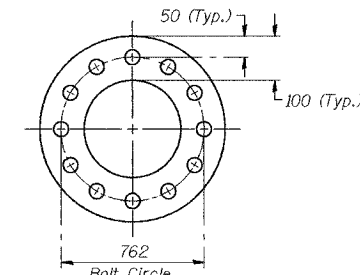
Provide 205 x 115 cover. Outside corners = 57 mm radius. Provide 4- 8 mm  $\phi$  holes in cover for 6 mm-20 round head hot dip galvanized or stainless steel machine screws. (See cover details)

\*\*Bent bars may be butt welded top and bottom or bottom only. In lieu of fabricated handhole frame as shown, may cut from 50 mm plate (rolling direction vertical). All cut faces to be ground to ANSI Roughness of 12.7  $\mu$  or less.

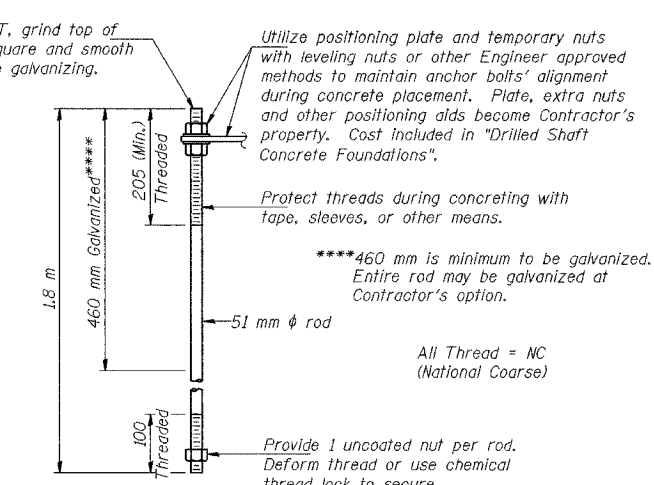
\*\*\*Butt welded joint in post is only allowed for post heights (H) over 6.10 m in length. If used, weld procedure must be preapproved by Engineer and joint shall receive 100% RT or UT (tension criteria) at Contractor's expense.



SIDE ELEVATION



SUGGESTED POSITIONING PLATE



ANCHOR ROD DETAIL

Utilize positioning plate and temporary nuts with leveling nuts or other Engineer approved methods to maintain anchor bolts' alignment during concrete placement. Plate, extra nuts and other positioning aids become Contractor's property. Cost included in "Drilled Shaft Concrete Foundations".

Protect threads during concreting with tape, sleeves, or other means.

\*\*\*\*460 mm is minimum to be galvanized. Entire rod may be galvanized at Contractor's option.

All Thread = NC (National Coarse)

Provide 1 uncoated nut per rod. Deform thread or use chemical thread lock to secure.

Anchor rods shall conform to AASHTO M314 Grade 380 (55) and meet Charpy V-Notch (CVN) energy of 20 J at -12  $^{\circ}$  C. before galvanizing. Galvanize the upper 460 mm (minimum\*\*\*\*) and associated M291, Grade A, C or DH heavy hex nuts and hardened washers per AASHTO M232. No welding shall be permitted on rods. Provide an unfinished nut at bottom, a hexagon locknut and washer above base plate and a leveling nut and washer below base plate. Nuts shall each be tightened with 270 N-m minimum torque against base plate. Before or after threading, but before galvanizing, each anchor rod shall be ultrasonically tested (UT) by a Level II or III inspector, qualified in accord with ANSI guidelines, using a straight beam, 13 mm  $\phi$  3.5 mhz. transducer, to insure no rejectable flaws exist in the upper 460 mm (tension criteria). Cost of testing included in "Drilled Shaft Concrete Foundations".

Structure Number	Station	H (m)
4C0721074L089.3	143+740	3.605

DESIGNED	RJW	2004
CHECKED	KJN	EXAMINED
DRAWN	RJW	ENGINEER OF STRUCTURAL SERVICES
CHECKED	KJN	PASSED
		ENGINEER OF BRIDGES AND STRUCTURES

NUMBER	REVISION	DATE

OSC-S-5(M) 10/1/2001

SIGNING SHEET 64 OF 83

**CANTILEVER SIGN STRUCTURES  
TYPE II-C-S & III-C-S TRUSS SUPPORT POST  
STEEL TRUSS & STEEL POST**

ILLINOIS DEPARTMENT OF TRANSPORTATION

SIGNING PLAN  
W.B. 1-74 STA. 143+740  
S.N. 4C0721074L089.3

PEORIA CO., IL. DATE: 11-11-04

M:\Proj\3573\Sign\_Structures\Contract\_10\sp1002-74can-sll.dgn