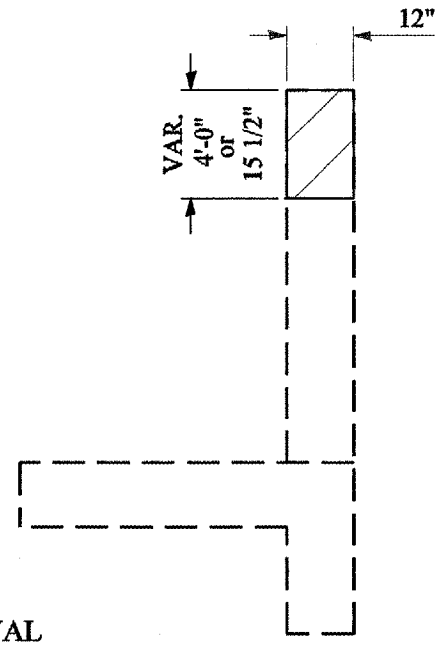
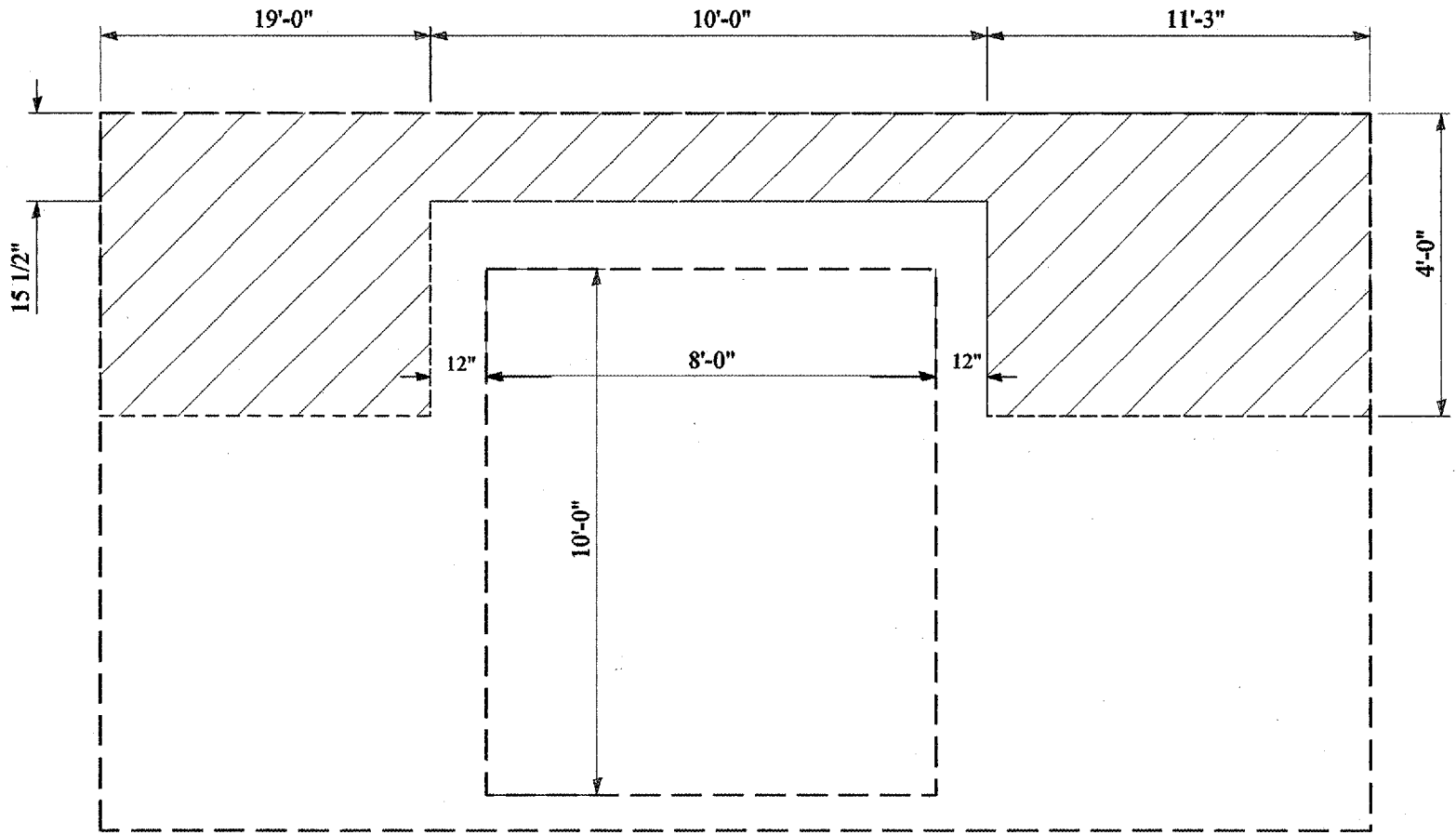


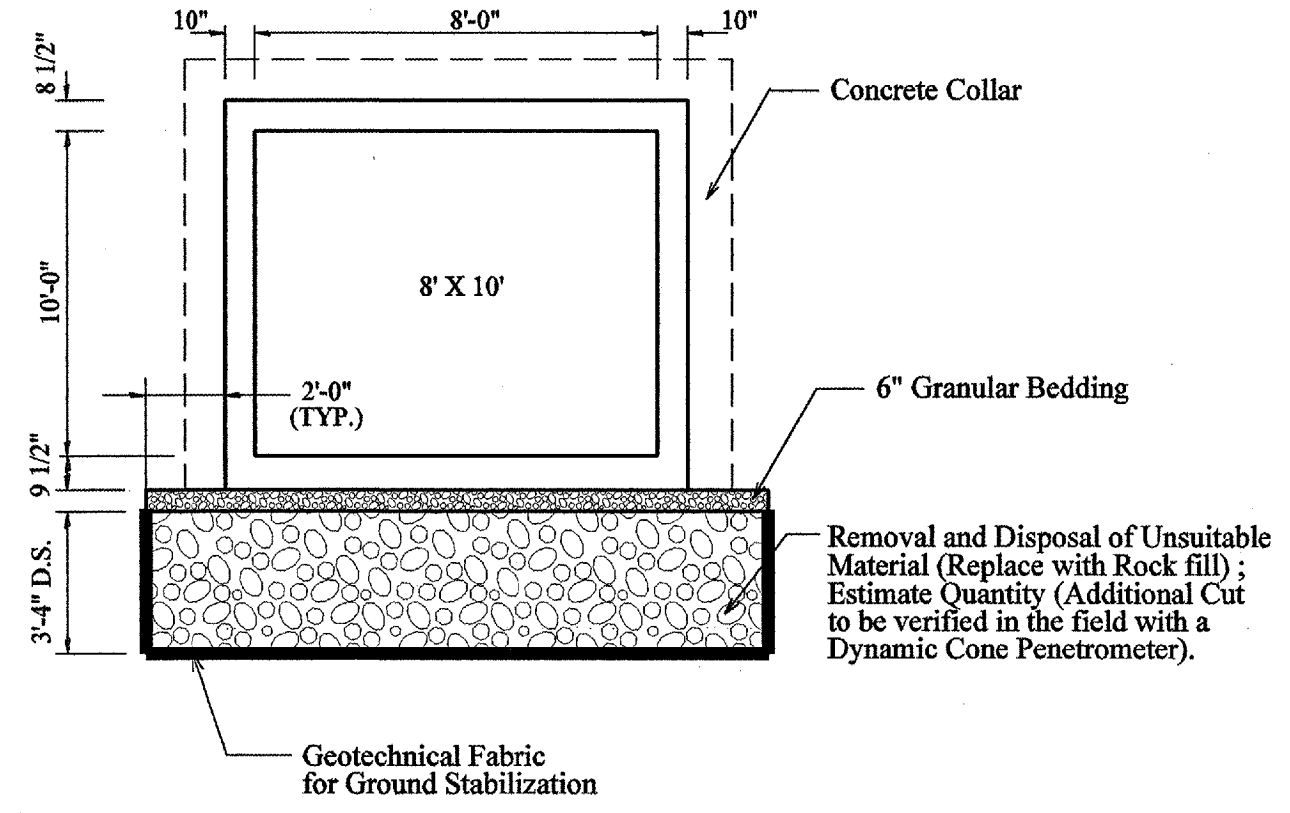
68383

F.A.P. R.T.E.	SECTION	COUNTY	TOTAL SHEETS	SHEET NO.
693	*	TAZEWELL		21
STA. 856+50		TO STA. 862+50		
FED. ROAD DIST. NO.		ILLINOIS	FED. AID PROJECT	
* D4 CULVERT EXT. / REPAIR 2005-2				



CONCRETE REMOVAL

CONCRETE REMOVAL DETAIL DOWNSTREAM



SECTION THROUGH BARREL

CULVERT EXTENSION DETAILS
STA. 583+51.04

PLAN	DATE
BY	
REVIEWED	
DATE	
NOTES	
NO.	

PROFILE	DATE
BY	
REVIEWED	
DATE	
NOTES	
NO.	