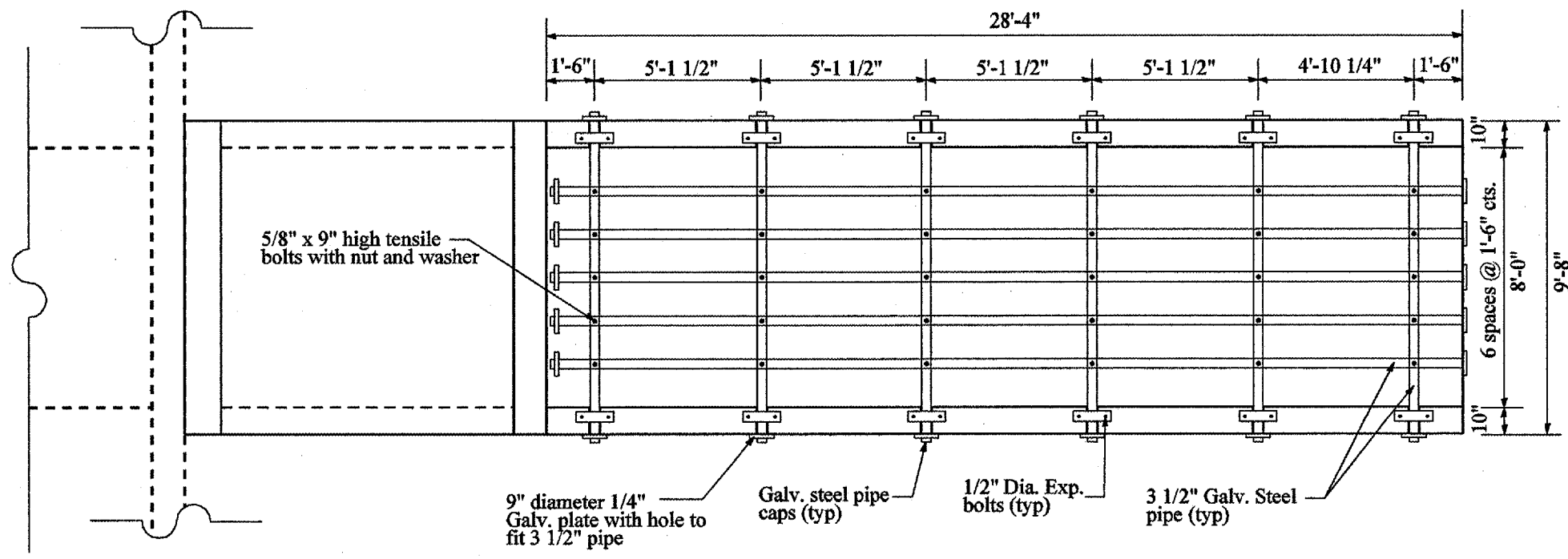


68383

F.A.P. RTE.	SECTION	COUNTY	TOTAL SHEETS	SHEET NO.
693	*	TAZEWELL		23
STA. 581+00		TO STA. 587+00		
FED. ROAD DIST. NO. 4	ILLINOIS	FED. AID PROJECT		

* D4 CULVERT EXT. / REPAIR 2005-2

PLAN	DATE
BY	
CHECKED	
DATE	
BY	
CHECKED	
DATE	
BY	
CHECKED	
DATE	



GRATE DETAIL

GENERAL NOTES:

Steel pipes shall conform to A.S.T.M. A-53 (type E or S) Grade B schedule 40, and shall be galvanized conforming to A.S.T.M. A-120.

Steel plates shall conform to AASHTO M-183 & shall be galvanized conforming to AASHTO M-111.

Bolts, Nuts & washers shall be in accordance with article 1006.08 of the Standard Specifications and shall be galvanized.

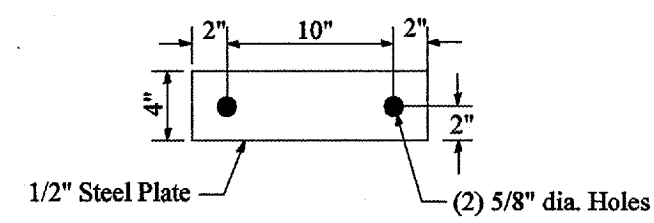
This work will be paid for at the contract unit price per "LINEAL FOOT" for GALV. STEEL PIPE, 3 1/2" and shall include the 1/2" Expansion bolts, Galv. Bolts with Nuts, Washers and Galv. anchor plate, Steel pipe caps, 9" Square or Round Galv. Plate and all necessary work

PROFILE	DATE
BY	
CHECKED	
DATE	
BY	
CHECKED	
DATE	
BY	
CHECKED	
DATE	

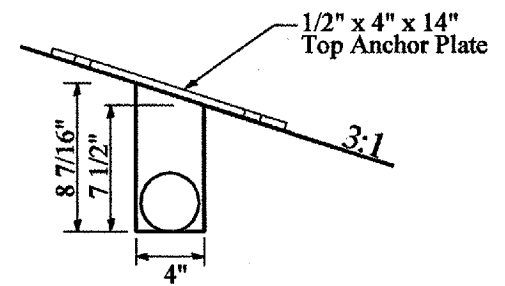
BILL OF MATERIAL

ITEMS	UNIT	QTY.
3 1/2" Galv. Steel Pipe	L. Foot	5 @ 29'-10"
		6 @ 10'-0"
**1/2" x 4" x 14" Galv. Anchor Plate	Each	12
**5/8" x 9" Galv. bolts	Each	30
**Galv. Steel Pipe Caps	Each	22
**1/2" dia. Galv. Exp. Bolts	Each	24
**9" Square or Round 1/4" Galv. Plate	Each	22

** For information only



TOP ANCHOR PLATE



DETAIL "A"

CULVERT EXTENSION DETAILS
STA. 583+51.04