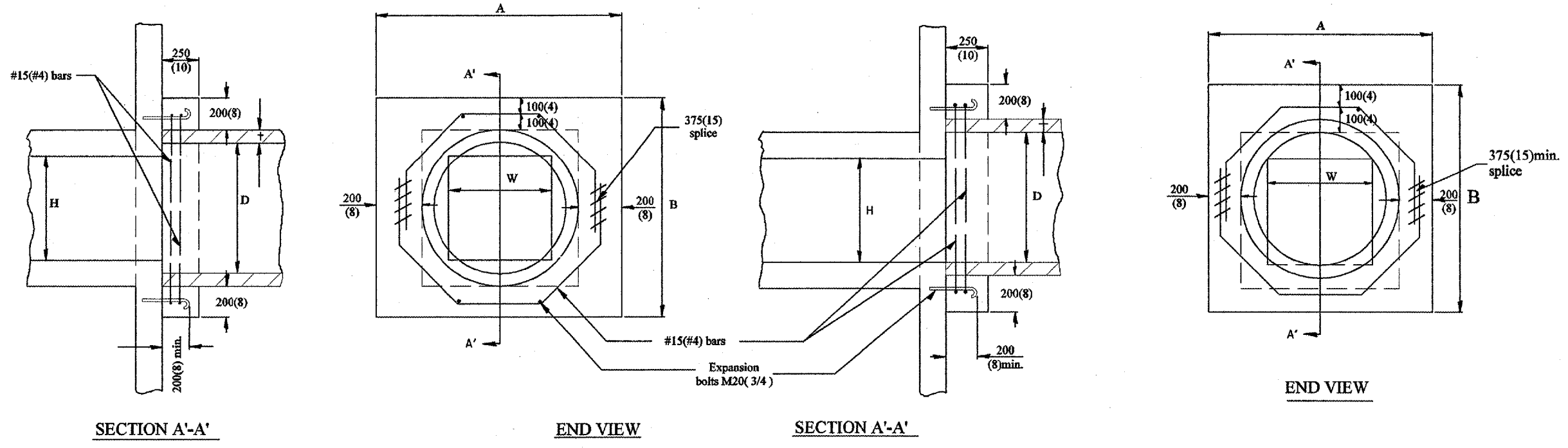


68383

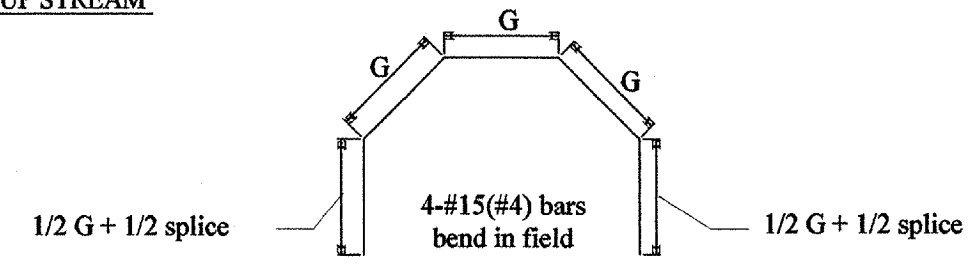
| | | | | |
|-----------------------------------|----------|------------------|--------------|-----------|
| F.A.P. RTE. | SECTION | COUNTY | TOTAL SHEETS | SHEET NO. |
| 693 | * | TAZEWELL | 54 | 54 |
| STA. | TO STA. | | | |
| FED. ROAD DIST. NO. | ILLINOIS | FED. AID PROJECT | | |
| * D4 CULVERT EXT. / REPAIR 2005-2 | | | | |



DOWN STREAM

UP STREAM

| EXISTING BOX | | A | B | D | t | EACH COLLAR | | | | |
|--------------|----------|-------------------|-------------------|--------------|------------|--------------|--------------------|----------------|----------------|------|
| W | H | | | | | CONC. COLLAR | REINFORCEMENT BARS | | EXPANSION BOLT | |
| | | | | | | m(CU. YD.) | G | L | KG(LBS.) | EACH |
| 300(12) PIPE | | 810 (32) | 810 (32) | 300 (12) | 50(2) | 0.14(0.18) | 254 (10) | 1.40m (4'-7") | 9(12) | 4 |
| 450(18) PIPE | | 990 (39) | 990 (39) | 450 (18) | 65(2 1/2) | 0.18(0.24) | 324 (12 3/4) | 1.68m (5'-6") | 11(15) | 4 |
| 600(24) PIPE | | 1.17m (3'-10") | 1.17m (3'-10") | 600 (24) | 75(3) | 0.23(0.30) | 400 (15 3/4) | 1.98m (6'-6") | 12(17) | 4 |
| 600(24) | 600(24) | 1.35m (4'-5") | 1.35m (4'-5") | 750 (30) | 90(3 1/2) | 0.28(0.37) | 416 (18 3/4) | 2.29m (7'-6") | 14(20) | 4 |
| 750(30) | 750(30) | 1.52m (5'-0") | 1.52m (5'-0") | 900 (36) | 100(4) | 0.34(0.45) | 546 (21 1/2) | 2.57m (8'-5") | 16(22) | 8 |
| 900(36) | 900(36) | 1.7m (5'-7") | 1.7m (5'-7") | 1050 (42) | 115(4 1/2) | 0.38(0.50) | 622 (24 1/2) | 2.87m (9'-5") | 18(25) | 10 |
| 1050(42) | 1050(42) | 1.88m (6'-2") | 1.88m (6'-2") | 1200 (48) | 125(5) | 0.47(0.61) | 692 (27 1/4) | 3.15m (10'-4") | 20(28) | 10 |
| 1200(48) | 1200(48) | 2.06m (6'-9") | 2.06m (6'-9") | 1350 (54) | 140(5 1/2) | 0.61(0.80) | 768 (30 1/4) | 3.45m (11'-4") | 22(30) | 10 |



GENERAL NOTES

1. The collar shall be constructed entirely of CLASS SI CONCRETE and in accordance with the applicable portions of Section 503 of the Standard Specifications. Reinforcement Bars shall conform to Section 508.
2. Expansion Bolts shall consist of approved Expansion Anchors, and M20(3/4) Hook Bolts which conform to Section 1006.09. These Bolts shall extend at least 200(8) into the new Concrete.

| QUANTITIES | |
|---------------------------------------------------------------------------------------------------------------------|-------|
| CALC. BY: | DATE: |
| CHECKED BY: | DATE: |
| QUANTITY CALCULATIONS ARE ON FILE AT THE DISTRICT 4 OFFICE; BUREAU OF PROJECT IMPLEMENTATION; DOCUMENTATION SECTION | |

| DATE | REVISIONS | BY |
|--------|--------------------------------------------------------------------------------------|------|
| 1-1-97 | RENUM. I-11.02, NEW REVISION BOX, REVISED TITLE BOX, ADDED QUANTITY CALCULATION BOX. | T.P. |
| | | |
| | | |
| | | |
| | | |

ILLINOIS DEPARTMENT OF TRANSPORTATION
DISTRICT CADD STANDARD
**PIPE CULVERT EXTENSION
COLLAR
(WITH END SECTION)**

CADD STD. No. 542001-D4
SCALE: NOT DRAWN TO SCALE
DATE 11/16/2004

DRAWN BY CADD
CHECKED BY

11/16/2004