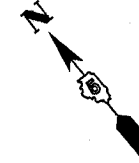
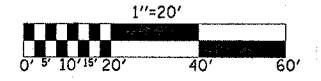
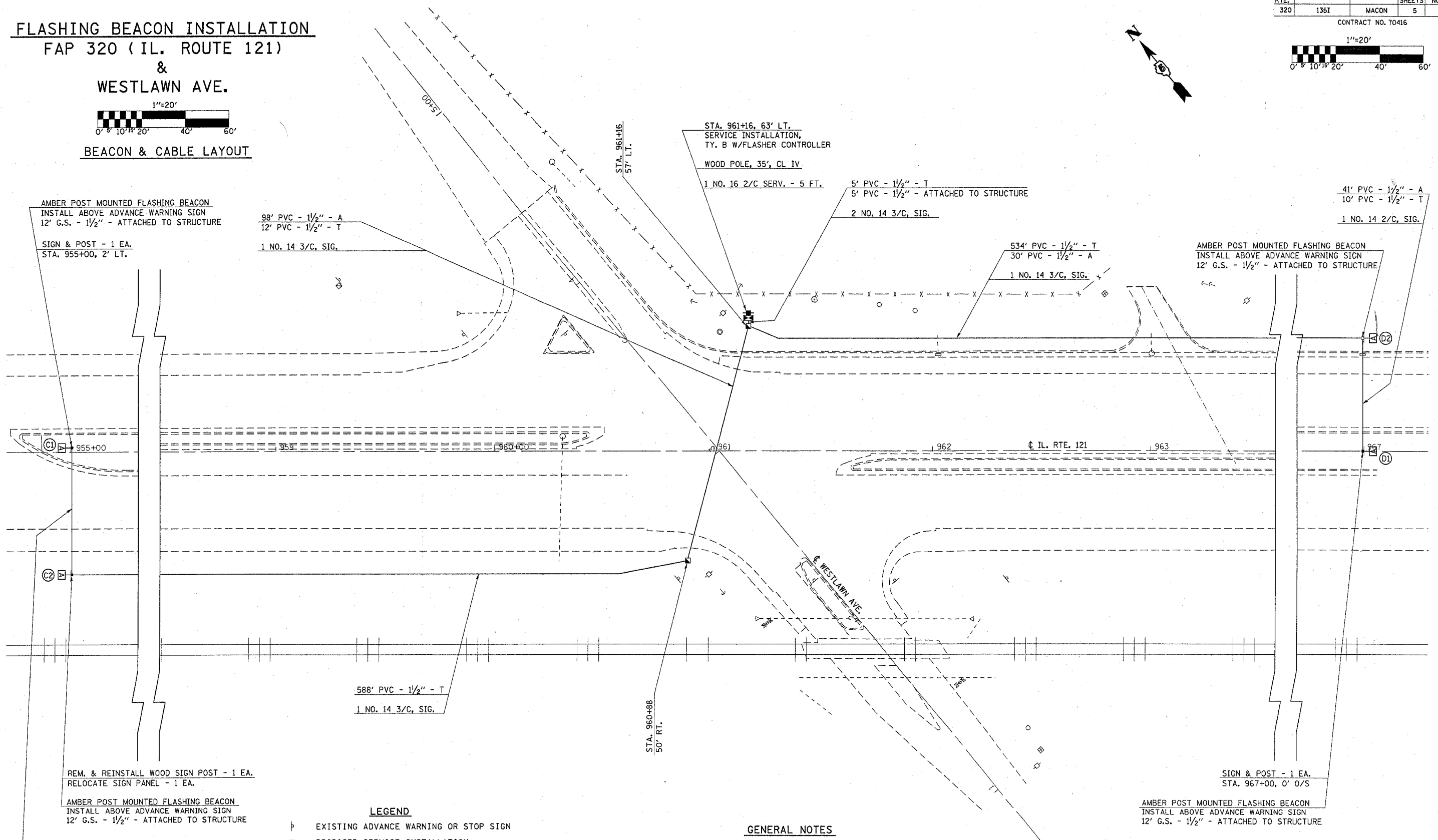
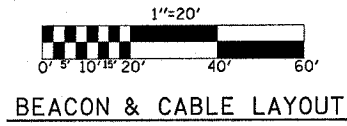


F.A.P. RTE.	SECTION	COUNTY	TOTAL SHEETS	SHEET NO.
320	135I	MACON	5	4

CONTRACT NO. 70416



FLASHING BEACON INSTALLATION FAP 320 (IL. ROUTE 121) & WESTLAWN AVE.



AMBER POST MOUNTED FLASHING BEACON
INSTALL ABOVE ADVANCE WARNING SIGN
12' G.S. - 1/2" - ATTACHED TO STRUCTURE

SIGN & POST - 1 EA.
STA. 955+00, 2' LT.

98' PVC - 1/2" - A
12' PVC - 1/2" - T

1 NO. 14 3/C, SIG.

STA. 961+16, 63' LT.
SERVICE INSTALLATION,
TY. B W/FLASHER CONTROLLER

WOOD POLE, 35', CL IV

1 NO. 16 2/C SERV. - 5 FT.

5' PVC - 1/2" - T
5' PVC - 1/2" - ATTACHED TO STRUCTURE

2 NO. 14 3/C, SIG.

534' PVC - 1/2" - T
30' PVC - 1/2" - A

1 NO. 14 3/C, SIG.

AMBER POST MOUNTED FLASHING BEACON
INSTALL ABOVE ADVANCE WARNING SIGN
12' G.S. - 1/2" - ATTACHED TO STRUCTURE

41' PVC - 1/2" - A
10' PVC - 1/2" - T

1 NO. 14 2/C, SIG.

588' PVC - 1/2" - T

1 NO. 14 3/C, SIG.

REM. & REINSTALL WOOD SIGN POST - 1 EA.
RELOCATE SIGN PANEL - 1 EA.

AMBER POST MOUNTED FLASHING BEACON
INSTALL ABOVE ADVANCE WARNING SIGN
12' G.S. - 1/2" - ATTACHED TO STRUCTURE

45' PVC - 1/2" - A
13' PVC - 1/2" - T

1 NO. 14 2/C, SIG.

SIGN & POST - 1 EA.
STA. 967+00, 0' 0/S

AMBER POST MOUNTED FLASHING BEACON
INSTALL ABOVE ADVANCE WARNING SIGN
12' G.S. - 1/2" - ATTACHED TO STRUCTURE

- LEGEND**
- ⊥ EXISTING ADVANCE WARNING OR STOP SIGN
 - PROPOSED SERVICE INSTALLATION
 - ⊠ PROPOSED FLASHER CONTROLLER
 - PROPOSED HANDHOLE
 - ⊞ PROPOSED AMBER FLASHER BEACON

- GENERAL NOTES**
1. A TWO CIRCUIT FLASHER WILL BE PROVIDED WITH THE FLASHER CONTROLLER TO OBTAIN THE WIG-WAG OPERATION.
 2. INSTALLTION SHALL BE IN CONFORMANCE WITH STANDARD 880001.
 3. THE ACTUAL LOCATION OF THE HANDHOLES AND GULFBXES SHALL BE DETERMINED BY THE ENGINEER.

SEQUENCE OF OPERATIONS

INTERVAL	1	2
FLASHER C1, D1	A	DARK
FLASHER C2, D2	DARK	A