

FAP ROUTE	SECTION	COUNTY	TOTAL SHEETS	SHEET NO.
320	1351	MACON	5	1

CONTRACT NO. 70416  
D-95-058-04

**STATE OF ILLINOIS  
DEPARTMENT OF TRANSPORTATION  
DIVISION OF HIGHWAYS  
PLANS FOR PROPOSED  
HIGHWAY IMPROVEMENT**

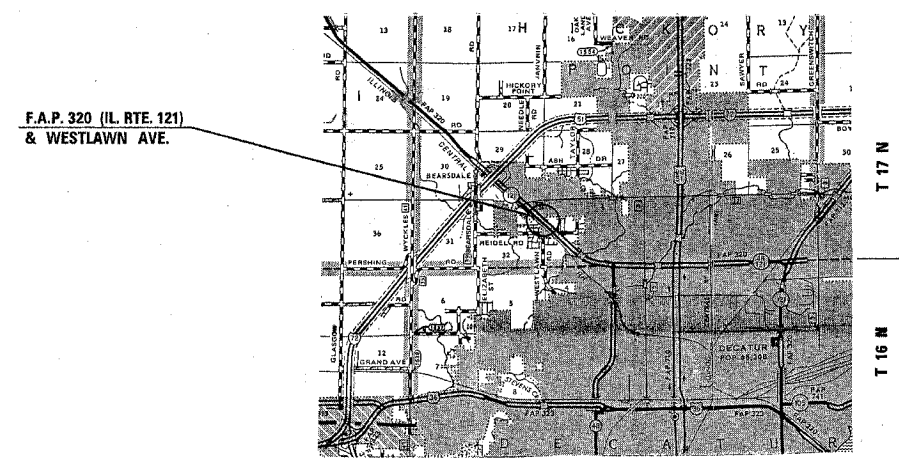
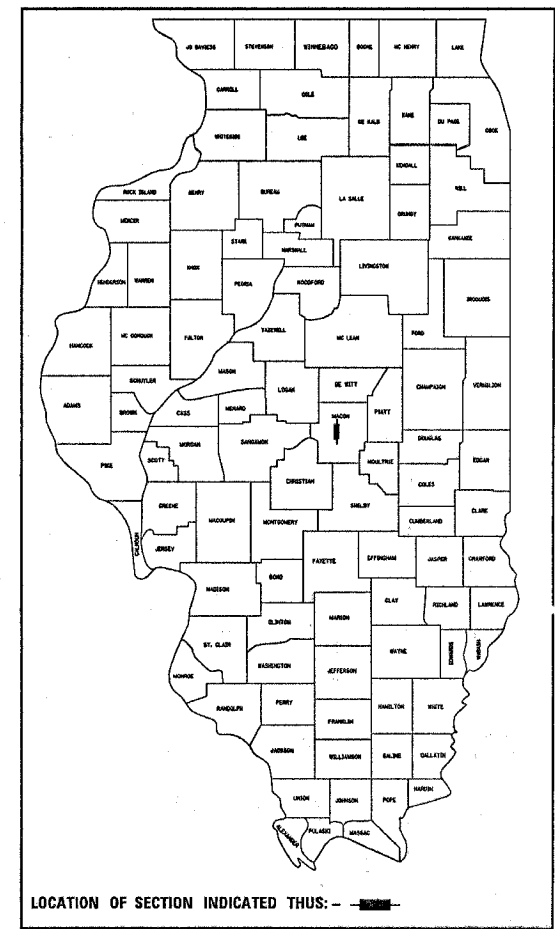
FOR INDEX OF SHEETS, SEE SHEET NO. 2  
FOR SUMMARY OF QUANTITIES, SEE SHEET NO. 3

SCALES { PLAN 1"=20'  
PROFILE HORIZ.  
PROFILE VERT.  
CROSS SECTIONS } HORIZONTAL VERTICAL

**FAP ROUTE 320 (ILLINOIS ROUTE 121)  
SECTION 1351  
MACON COUNTY  
PROJECT HS-0320 (029)**

C-95-061-04

**FLASHING BEACON INSTALLATION**



**DESIGN DESIGNATION**  
**N/A**

STATE OF ILLINOIS  
DEPARTMENT OF TRANSPORTATION  
DIVISION OF HIGHWAYS

SUBMITTED Feb 8 20 05  
*[Signature]*  
DEPUTY DIRECTOR OF HIGHWAYS, REGION THREE ENGINEER

March 25, 20 05  
*Mike Hene*  
ENGINEER OF DESIGN AND ENVIRONMENT

March 25, 20 05  
*Victor Madern*  
DIRECTOR OF HIGHWAYS, CHIEF ENGINEER

FOR UNDERGROUND UTILITY  
LOCATIONS CALL  
TOLL FREE J.U.L.I.E. TELEPHONE NO.  
1-800-892-0123  
DECATUR TOWNSHIP

U.S. DEPARTMENT OF TRANSPORTATION  
FEDERAL HIGHWAY ADMINISTRATION

APPROVED \_\_\_\_\_ DATE \_\_\_\_\_  
DIVISION ADMINISTRATOR

**CONTRACT NO. 70416**

TOTAL LENGTH OF SECTION & PROJECT = \_\_\_\_\_ FEET = \_\_\_\_\_ MILES  
NET LENGTH OF SECTION & PROJECT = \_\_\_\_\_ FEET = \_\_\_\_\_ MILES

FAP ROUTE 320 SECTION 1351 MACON COUNTY

PRINTED BY AUTHORITY OF THE STATE OF ILLINOIS

DESIGNER: ROGER BIGGS PROJECT ENGINEER: SCOTT NEIHART (217) 465-4181

F.A.P. RTE.	SECTION	COUNTY	TOTAL SHEETS	SHEET NO.
320	135I	MACON	5	2

CONTRACT NO. 70416

INDEX OF SHEETS

<u>SHEET NO.</u>	<u>ITEM</u>
1	COVER SHEET
2	INDEX OF SHEETS & STANDARDS IN THE PLANS
3	SUMMARY OF QUANTITIES
4	FLASHING BEACON INSTALLATION PLANS
5	BILL OF MATERIALS

STANDARDS IN THE PLANS

701101-01	TRAFFIC CONTROL
701106-01	TRAFFIC CONTROL
701601-04	TRAFFIC CONTROL
701701-04	TRAFFIC CONTROL
702001-05	TRAFFIC CONTROL DEVICES
805001	ELECTRICAL SERVICE INSTALLATION DETAILS
814001	CONCRETE HANDHOLES
880001	SPAN WIRE MOUNTED SIGNALS AND FLASHING BEACON INSTALLATION

F.A.P. RTE.	SECTION	COUNTY	TOTAL SHEETS	SHEET NO.
320	1351	MACON	5	3

CONTRACT NO. 70416

SUMMARY OF QUANTITIES

LOCATION OF WORK:

FAP 320  
IL. 121  
&  
WESTLAWN AVE.  
90% FED  
10% STATE

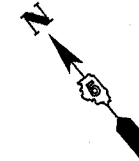
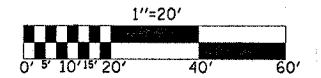
CONSTRUCTION TYPE CODE:

Y031-1F

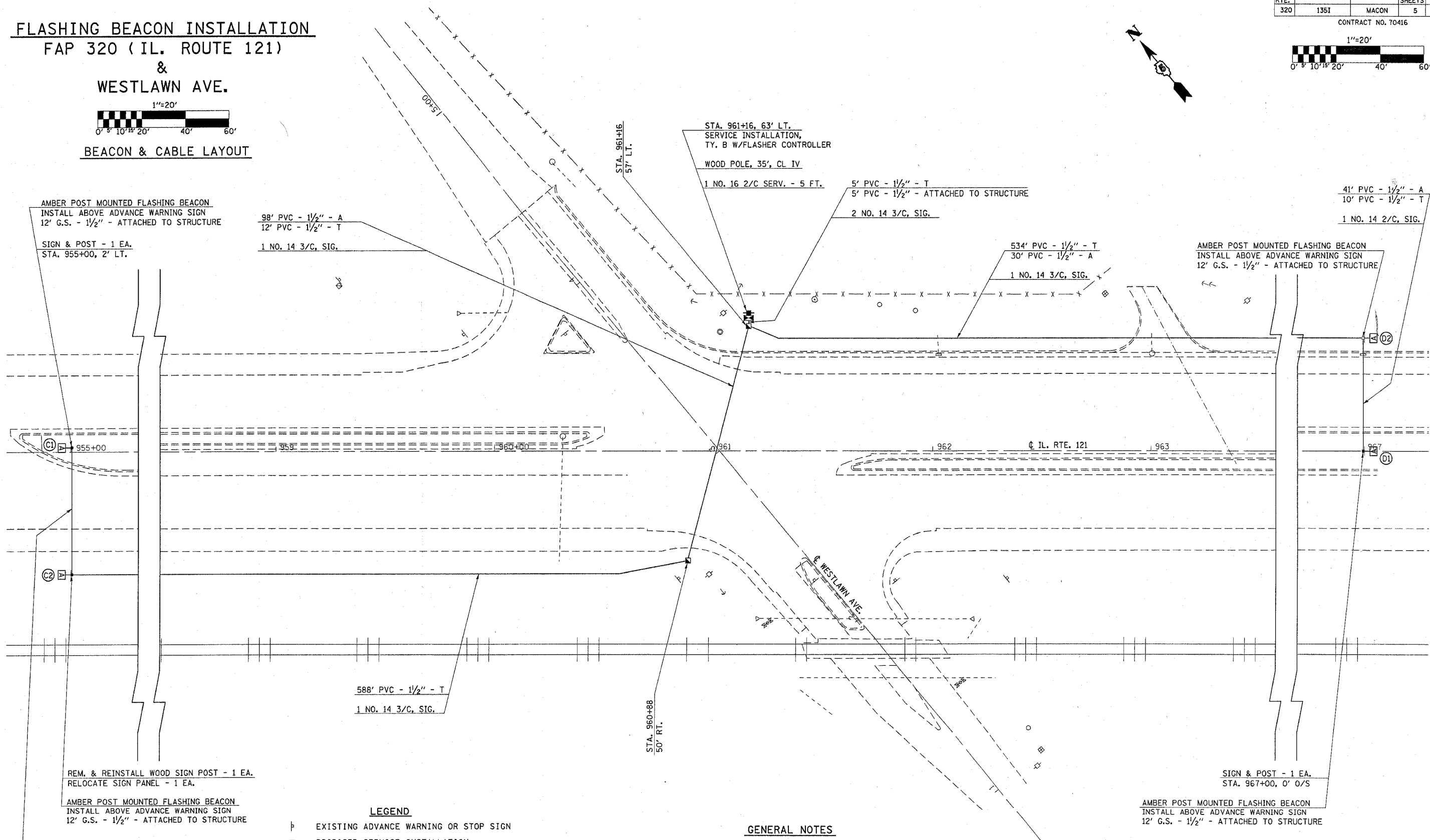
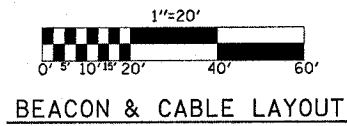
<u>CODE NO</u>	<u>ITEM</u>	<u>UNIT</u>	<u>TOTAL QUANTITY</u>	<u>QUANTITY</u>
67100100	MOBILIZATION	L SUM	1.0	1.0
70102630	TRAFFIC CONTROL AND PROTECTION, STANDARD 701601	L SUM	1.0	1.0
70102635	TRAFFIC CONTROL AND PROTECTION, STANDARD 701701	L SUM	1.0	1.0
80500200	SERVICE INSTALLATION, TYPE B	EACH	1.0	1.0
80802100	WOOD POLE, 35 FT., CLASS 4	EACH	1.0	1.0
81012500	CONDUIT IN TRENCH, 1 1/2" DIA., PVC	FOOT	1,147.0	1,147.0
81021540	CONDUIT, AUGERED 1 1/2" DIA., PVC	FOOT	214.0	214.0
81100500	CONDUIT ATTACHED TO STRUCTURE, 1 1/2" DIA., GALVANIZED STEEL	FOOT	53.0	53.0
81400100	HANDHOLE	EACH	2.0	2.0
81500200	TRENCH AND BACKFILL FOR ELECTRICAL WORK	FOOT	1,147.0	1,147.0
85800100	FLASHER CONTROLLER	EACH	1.0	1.0
87301215	ELECTRIC CABLE IN CONDUIT, SIGNAL NO. 14 2C	FOOT	161.0	161.0
87301225	ELECTRIC CABLE IN CONDUIT, SIGNAL NO. 14 3C	FOOT	1,328.0	1,328.0
87301805	ELECTRIC CABLE IN CONDUIT, SERVICE, NO. 6 2 C	FOOT	5.0	5.0
X0359600	REMOVE AND REINSTALL WOOD SIGN POST	EACH	1.0	1.0
X8801100	SIGNAL HEAD ,POLYCARBONATE, LED, 1-FACE, 1-SECTION, POST MOUNTED	EACH	4.0	4.0
XX001003	SIGN AND POST	EACH	2.0	2.0
XX003925	RELOCATE SIGN PANEL	EACH	1.0	1.0
Z0048665	RAILROAD PROTECTIVE LIABILITY INSURANCE	L SUM	1.0	1.0

F.A.P. RTE.	SECTION	COUNTY	TOTAL SHEETS	SHEET NO.
320	135I	MACON	5	4

CONTRACT NO. 70416



# FLASHING BEACON INSTALLATION FAP 320 (IL. ROUTE 121) & WESTLAWN AVE.



AMBER POST MOUNTED FLASHING BEACON  
INSTALL ABOVE ADVANCE WARNING SIGN  
12' G.S. - 1/2" - ATTACHED TO STRUCTURE

SIGN & POST - 1 EA.  
STA. 955+00, 2' LT.

98' PVC - 1/2" - A  
12' PVC - 1/2" - T

1 NO. 14 3/C, SIG.

STA. 961+16, 63' LT.  
SERVICE INSTALLATION,  
TY. B W/FLASHER CONTROLLER

WOOD POLE, 35', CL IV

1 NO. 16 2/C SERV. - 5 FT.

5' PVC - 1/2" - T  
5' PVC - 1/2" - ATTACHED TO STRUCTURE

2 NO. 14 3/C, SIG.

534' PVC - 1/2" - T  
30' PVC - 1/2" - A

1 NO. 14 3/C, SIG.

AMBER POST MOUNTED FLASHING BEACON  
INSTALL ABOVE ADVANCE WARNING SIGN  
12' G.S. - 1/2" - ATTACHED TO STRUCTURE

41' PVC - 1/2" - A  
10' PVC - 1/2" - T

1 NO. 14 2/C, SIG.

588' PVC - 1/2" - T

1 NO. 14 3/C, SIG.

REM. & REINSTALL WOOD SIGN POST - 1 EA.  
RELOCATE SIGN PANEL - 1 EA.

AMBER POST MOUNTED FLASHING BEACON  
INSTALL ABOVE ADVANCE WARNING SIGN  
12' G.S. - 1/2" - ATTACHED TO STRUCTURE

45' PVC - 1/2" - A  
13' PVC - 1/2" - T

1 NO. 14 2/C, SIG.

SIGN & POST - 1 EA.  
STA. 967+00, 0' 0/S

AMBER POST MOUNTED FLASHING BEACON  
INSTALL ABOVE ADVANCE WARNING SIGN  
12' G.S. - 1/2" - ATTACHED TO STRUCTURE

- LEGEND**
- ⊥ EXISTING ADVANCE WARNING OR STOP SIGN
  - PROPOSED SERVICE INSTALLATION
  - ⊠ PROPOSED FLASHER CONTROLLER
  - PROPOSED HANDHOLE
  - ⊞ PROPOSED AMBER FLASHER BEACON

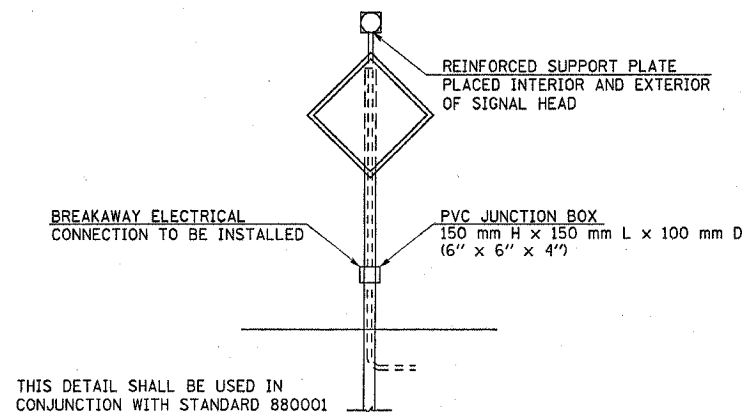
- GENERAL NOTES**
1. A TWO CIRCUIT FLASHER WILL BE PROVIDED WITH THE FLASHER CONTROLLER TO OBTAIN THE WIG-WAG OPERATION.
  2. INSTALLTION SHALL BE IN CONFORMANCE WITH STANDARD 880001.
  3. THE ACTUAL LOCATION OF THE HANDHOLES AND GULFBXES SHALL BE DETERMINED BY THE ENGINEER.

**SEQUENCE OF OPERATIONS**

INTERVAL	1	2
FLASHER C1, D1	A	DARK
FLASHER C2, D2	DARK	A

F.A.P. RTE.	SECTION	COUNTY	TOTAL SHEETS	SHEET NO.
320	1351	MACON	5	5

CONTRACT NO. 70416

**POST MOUNTED FLASHING BEACON**

**B I L L O F M A T E R I A L S**  
**IL. ROUTE 121 & WESTLAWN AVE.**

<u>ITEM</u>	<u>UNIT</u>	<u>QUANTITY</u>
SERVICE INSTALLATION, TYPE B	EACH	1
WOOD POLE, 35 FT., CLASS 4	EACH	1
CONDUIT IN TRENCH, 1 1/2" DIA., PVC	FOOT	1147
CONDUIT, AUGERED 1 1/2" DIA., PVC	FOOT	214
CONDUIT ATTACHED TO STRUCTURE, 1 1/2" DIA., GALVANIZED STEEL	FOOT	53
HANDHOLE	EACH	2
TRENCH AND BACKFILL FOR ELECTRICAL WORK	FOOT	1147
FLASHER CONTROLLER	EACH	1
ELECTRIC CABLE IN CONDUIT, SIGNAL NO. 14 2C	FOOT	161
ELECTRIC CABLE IN CONDUIT, SIGNAL NO. 14 3C	FOOT	1328
ELECTRIC CABLE IN CONDUIT, SERVICE, NO. 6 2 C	FOOT	5
REMOVE AND REINSTALL WOOD SIGN POST	EACH	1
SIGNAL HEAD, POLYCARBONATE, LED, 1-FACE, 1-SECTION, POST MOUNTED	EACH	4
SIGN AND POST	EACH	2
RELOCATE SIGN PANEL	EACH	1

GENERAL NOTES

1. A TWO CIRCUIT FLASHER WILL BE PROVIDED WITH THE FLASHER CONTROLLER TO OBTAIN THE WIG-WAG OPERATION.
2. INSTALLTION SHALL BE IN CONFORMANCE WITH STANDARD 880001.
3. THE ACTUAL LOCATION OF THE HANDHOLES AND GULFBXES SHALL BE DETERMINED BY THE ENGINEER.