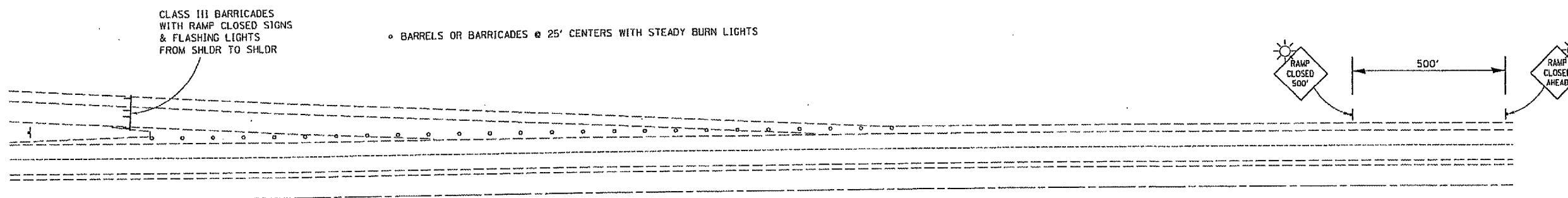


F.A.P. RYE	SECTION	COUNTY	TOTAL SHEETS	SHEET NO.
332	-	MACON	10	10

D-5 CONTRACT MAINT. 2005-6
 CONTRACT # 70445

TYPICAL APPLICATION OF TRAFFIC CONTROL DEVICES FOR RAMP CLOSURE



CLASS III BARRICADES WITH RAMP CLOSED SIGNS & FLASHING LIGHTS FROM SHLDR TO SHLDR

• BARRELS OR BARRICADES @ 25' CENTERS WITH STEADY BURN LIGHTS

NOTE: NOT TO SCALE

GENERAL NOTES

THE DETAILS SHOWN ON THIS SHEET ARE TO SUPPLEMENT TRAFFIC CONTROL AND PROTECTION (SPECIAL). THESE ITEMS WILL NOT BE PAID FOR SEPARATELY BUT SHALL BE CONSIDERED AS INCLUDED IN THE CONTRACT UNIT PRICE FOR TRAFFIC CONTROL & PROTECTION (SPECIAL).

CONTACT THE DISTRICT TRAFFIC OPERATIONS ENGINEER AT 217-465-4181, ONE WEEK PRIOR TO CLOSING THE RAMP.