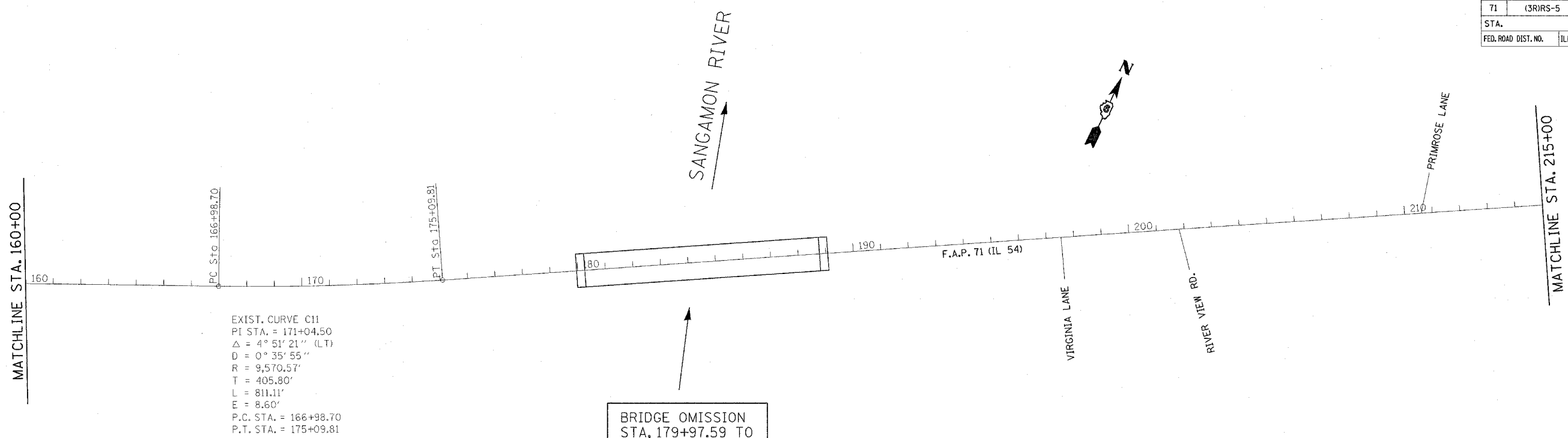
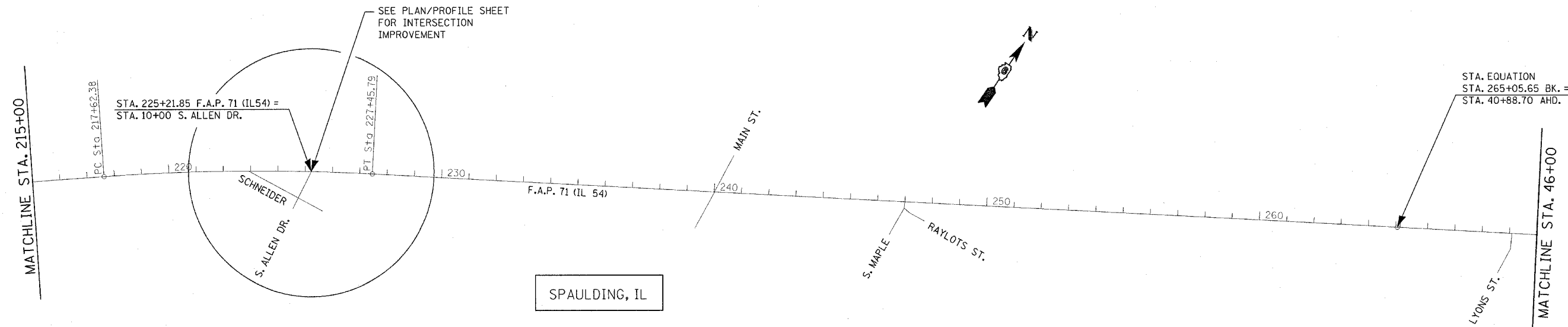


F.A.P. RTE.	SECTION	COUNTY	TOTAL SHEETS	SHEET NO.
71	(3R)RS-5	SANGAMON	25	13
STA.		TO STA.		
FED. ROAD DIST. NO.	ILLINOIS	FED. AID PROJECT		
CONTRACT NO. 72614				



EXIST. CURVE C11
 PI STA. = 171+04.50
 $\Delta = 4^\circ 51' 21''$ (LT)
 $D = 0^\circ 35' 55''$
 $R = 9,570.57'$
 $T = 405.80'$
 $L = 811.11'$
 $E = 8.60'$
 P.C. STA. = 166+98.70
 P.T. STA. = 175+09.81

BRIDGE OMISSION
 STA. 179+97.59 TO
 STA. 189+09.27



STA. 225+21.85 F.A.P. 71 (IL54) =
 STA. 10+00 S. ALLEN DR.

EXIST. CURVE C12
 PI STA. = 222+54.68
 $\Delta = 6^\circ 52' 46''$ (RT)
 $D = 0^\circ 41' 58''$
 $R = 8,190.59'$
 $T = 492.30'$
 $L = 983.42'$
 $E = 14.78'$
 P.C. STA. = 217+62.38
 P.T. STA. = 227+45.79

SPAULDING, IL

STA. EQUATION
 STA. 265+05.65 BK. =
 STA. 40+88.70 AHD.

REVISIONS	
NAME	DATE
GUARDRAIL/TMJ	02-08-05

ILLINOIS DEPARTMENT OF TRANSPORTATION

 ALIGNMENT LAYOUT

SCALE: VERT. DRAWN BY TMJ
 HORIZ. CHECKED BY MEB
 DATE 02-08-05

ct:\projects\ed52901\jdg-final\12-20-04\plans_200.dgn
 2/10/2005
 *REF01
 PLANS_200.DGN