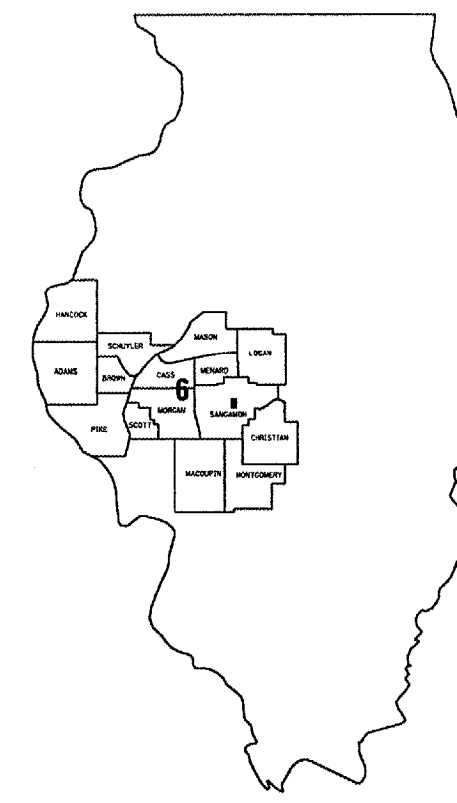


FOR INDEX OF SHEETS AND HIGHWAY STANDARDS, SEE SHEET 2.

STATE OF ILLINOIS  
DEPARTMENT OF TRANSPORTATION  
DIVISION OF HIGHWAYS

**PLANS FOR PROPOSED  
CONTRACT MAINTENANCE**  
**FAI 55 5 12.280(FR I-55W) FAP 662(IL 4/VET PKWY)**  
**SECTION D 6 CONT MAINT MISC 2005**  
**SANGAMON COUNTY**  
**C96-014-05 / D96-003-05**



LOCATION OF SECTION INDICATED THUS: ■

OMISSION STA. 238+56.23  
TO STA. 240+99.77

STA. EQU. - STA. 261+63.2bk  
= STA. 261+17.3ah

OMISSION STA. 281+96  
TO 477+25

OMISSION STA. 479+61  
TO STA. 484+64

OMISSION STA. 494+16  
TO STA. 497+14

OMISSION STA. 592+72  
TO STA. 595+52

STA. EQU. - STA. 605+83bk  
= STA. 605+75.2ah

END LOCATION #2  
STA. 656+86.2

BEGIN LOCATION #2  
STA. 100+10.25

STA. EQU. - STA. 154+43.14bk  
= STA. 154+08.24ah

STA. EQU. - STA. 198+73.88bk  
= STA. 198+87.08ah

STA. EQU. - STA. 215+07.94bk  
= STA. 215+08.9ah

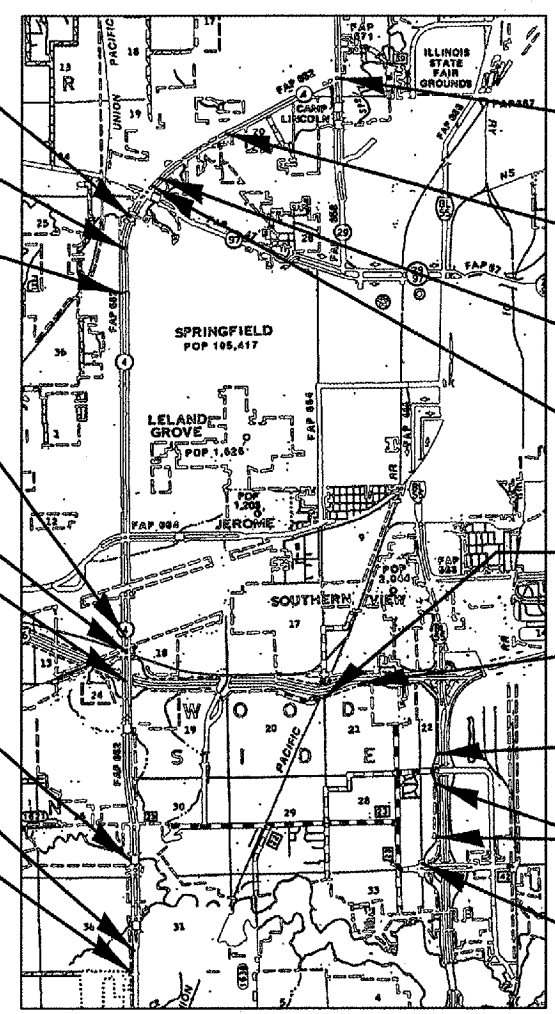
BEGIN LOCATION #1  
STA. 55+50

STA. EQU. - STA. 65+83bk  
= STA. 100+00ah

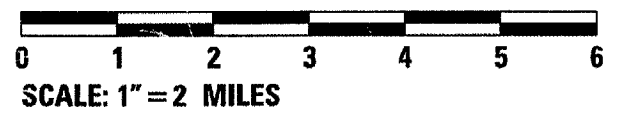
STA. EQU. - STA. 153+19.8bk  
= STA. 151+70.68ah

OMISSION STA. 170+62.47  
TO STA. 200+72.07

END LOCATION #1  
STA. 221+84.07



NET LENGTH LOCATION #1 = 10,406.590 FT = 1.971 MI  
NET LENGTH LOCATION #2 = 34,897 FT = 6.609 MI



**J. U. L. I. E.**  
**JOINT UTILITY LOCATION INFORMATION FOR EXCAVATION**  
1-800-892-0123

DESIGN & PLANNING ENGINEER: CECIL DOWNING  
PLANS & CONTRACT TECHNICIAN: TIMOTHY SHARP  
PHONE: (217) 782-7743

**CONTRACT NO. 72937**

STATE OF ILLINOIS  
DEPARTMENT OF TRANSPORTATION  
DIVISION OF HIGHWAYS

SUBMITTED SEPTEMBER 2 2004

Christ M. Reed  
DISTRICT ENGINEER

October 1 2004

Mike Hine  
ENGINEER OF DESIGN AND ENVIRONMENT

October 1 2004

Victor Modere  
DIRECTOR, DIVISION OF HIGHWAYS

INDEX

1 COVER  
 2 INDEX / STDS / SIGNATURES  
 3-4 QUANTITIES  
 5-6 TYPICAL SECTIONS

STANDARDS

- 442001-02
- 701001-01
- 701006-02
- 701011-01
- 701201-02
- 701301-02
- 701306-01
- 701311-02
- 701421-01
- 701422-01
- 701701-04
- 702001-05
- 780001-01

**STATE OF ILLINOIS  
 DEPARTMENT OF TRANSPORTATION  
 DIVISION OF HIGHWAYS  
 DISTRICT 6**

---

EXAMINED September 1 2004  
*Samir Alkhatib*  
 ENGINEER OF OPERATIONS

---

EXAMINED Aug 17 2004  
*W.R. Frey*  
 ENGINEER OF PROGRAM IMPLEMENTATION

---

EXAMINED AUGUST 19 2004  
*William E. Motes*  
 ENGINEER OF PROGRAM DEVELOPMENT

INDEX / STDS / SIGNATURES  
 FAI 55 5 12.280(FR 1-55W),  
 FAP 662(IL 4/VET PKWY)  
 SECT. D 6 CONT MAINT MISC 2005  
 SANGAMON COUNTY

Rev.

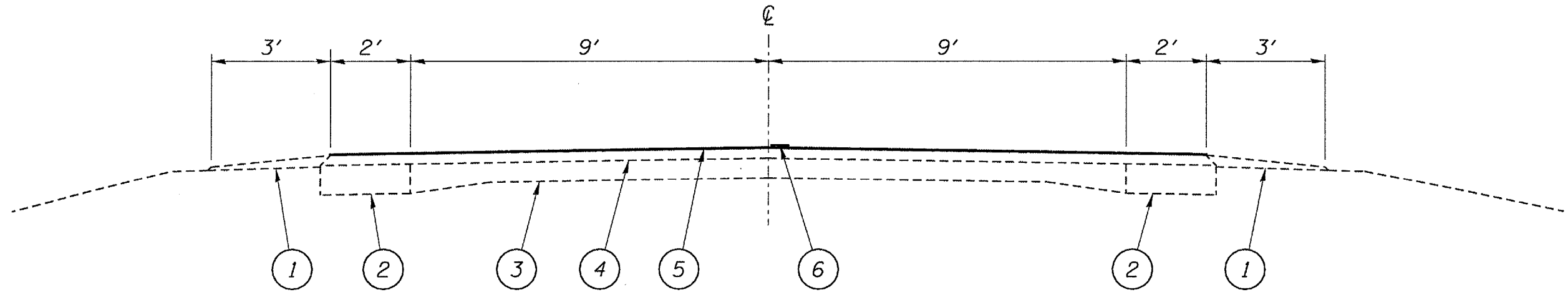
SUMMARY OF QUANTITIES			FAI 55 FR	FAP 662	SHEET 3 OF 6	
CODE NO.	ITEM	UNIT	FOOD	J000		URBAN TOTAL QTY
			100% STATE			
			LOCATION #1	LOCATION #2		
				URBAN		
40300400	BITUMINOUS MATERIALS (COVER AND SEAL COATS)	TON	108	157	42	307
40300500	COVER COAT AGGREGATE	TON	509			509
40300600	SEAL COAT AGGREGATE	TON	255	1,103	293	1,651
44200529	CLASS A PATCHES, TYPE II, 8 INCH	SQ YD		106	28	134
44200533	CLASS A PATCHES, TYPE III, 8 INCH	SQ YD		63	17	80
44213000	PATCH REINFORCEMENT	SQ YD		169	45	214
44213200	SAW CUTS	FOOT		1,153	307	1,460
67100100	MOBILIZATION	L SUM	0.5	0.4	0.1	1
70100310	TRAFFIC CONTROL AND PROTECTION, STANDARD 701421	L SUM		0.8	0.2	1
70100320	TRAFFIC CONTROL AND PROTECTION, STANDARD 701422	L SUM		0.8	0.2	1
70100450	TRAFFIC CONTROL AND PROTECTION, STANDARD 701201	L SUM	1			1
70100460	TRAFFIC CONTROL AND PROTECTION, STANDARD 701306	L SUM	1			1

\*SPECIALTY ITEM

INDEX / STDS / SIGNATURES  
 FAI 55 5 12.280(FR I-55W),  
 FAP 662(IL 4/VET PKWY)  
 SECT. D 6 CONT MAINT MISC 2005  
 SANGAMON COUNTY

Rex.





LOCATION #1

STA. EQ. 65+83bk=100+00ah  
 STA. EQ. 153+19.8bk=151+70.68ah

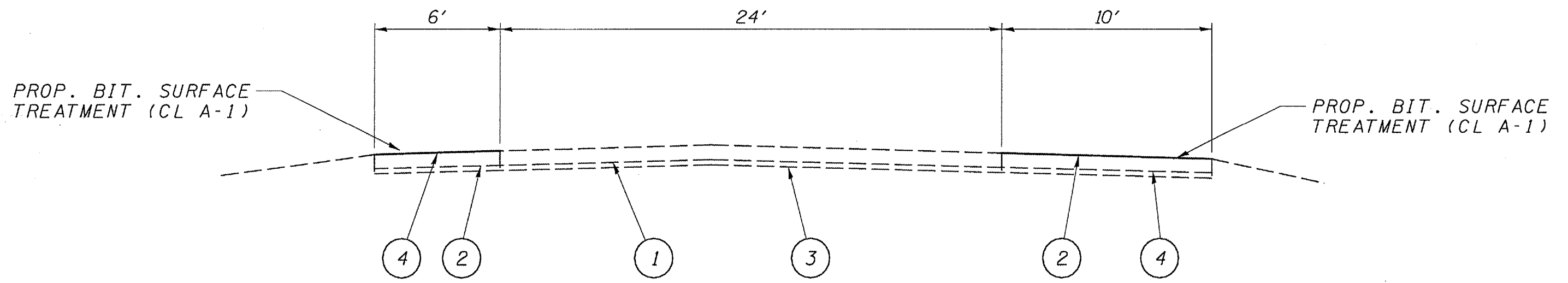
STA. 55+50 TO 65+83  
 STA. 100+00 TO STA. 153+19.8  
 STA. 151+70.68 TO 170+62.47  
 STA. 200+72.07 TO 221+84.07

OMISSION STA. 170+62.47 TO 200+72.07

LEGEND

- 1 - EXIST. AGGREGATE SHOULDERS, TYPE B
- 2 - EXIST. BASE COURSE WIDENING 9"
- 3 - EXIST. P.C.C. PAVEMENT 9"-6"-9"
- 4 - EXIST. BITUMINOUS MIXTURE FOR STABILIZED BASE 3"
- 5 - PROP. BITUMINOUS SURFACE TREATMENT (CLASS A-3)
- 6 - PROP. PAINT PAVEMENT MARKING - LINE 5"

TYPICALS  
 FAI 55 5 12.280(FR 1-55W),  
 FAP 662(IL 4/VET PKWY)  
 SECT: D 6 CONT MAINT MISC 2005  
 SANGAMON COUNTY



STATION EQUATIONS

LOCATION #2  
 154+43.14bk=154+08.24ah  
 198+73.88bk=198+87.08ah  
 215+07.94bk=215+08.9ah  
 261+63.2bk=261+17.3ah  
 605+83bk=605+75.2ah

NORTHBOUND AND SOUTHBOUND LANES

LOCATION #2  
 STA. 100+10.25 TO 154+43.14  
 STA. 154+08.24 TO 198+73.88  
 STA. 198+87.08 TO 215+07.94  
 STA. 215+08.9 TO 238+56.23  
 STA. 240+99.77 TO 261+63.2  
 STA. 261+17.3 TO 281+96  
 STA. 477+25 TO 479+61  
 STA. 497+14 TO 592+72  
 STA. 595+52 TO 605+83  
 STA. 605+72.5 TO 656+86.2

OMISSION STATIONS

LOCATION #2  
 238+56.23 TO 240+99.77  
 281+96 TO 477+25  
 494+16 TO 497+14  
 592+72 TO 595+52

LEGEND

- 1 - EXIST. C.R.P.C.C. PAVEMENT 8"
- 2 - EXIST. BITUMINOUS SHOULDER 8"
- 3 - EXIST. STABILIZED SUB-BASE 4"
- 4 - PROP. BIT. MATERIALS (COVER & SEAL COAT) W/ SEAL COAT AGG.

TYPICALS  
 FAI 55 5 12.280(FR 1-55W),  
 FAP 662(IL 4/VET PKWY)  
 SECT: D 6 CONT MAINT MISC 2005  
 SANGAMON COUNTY