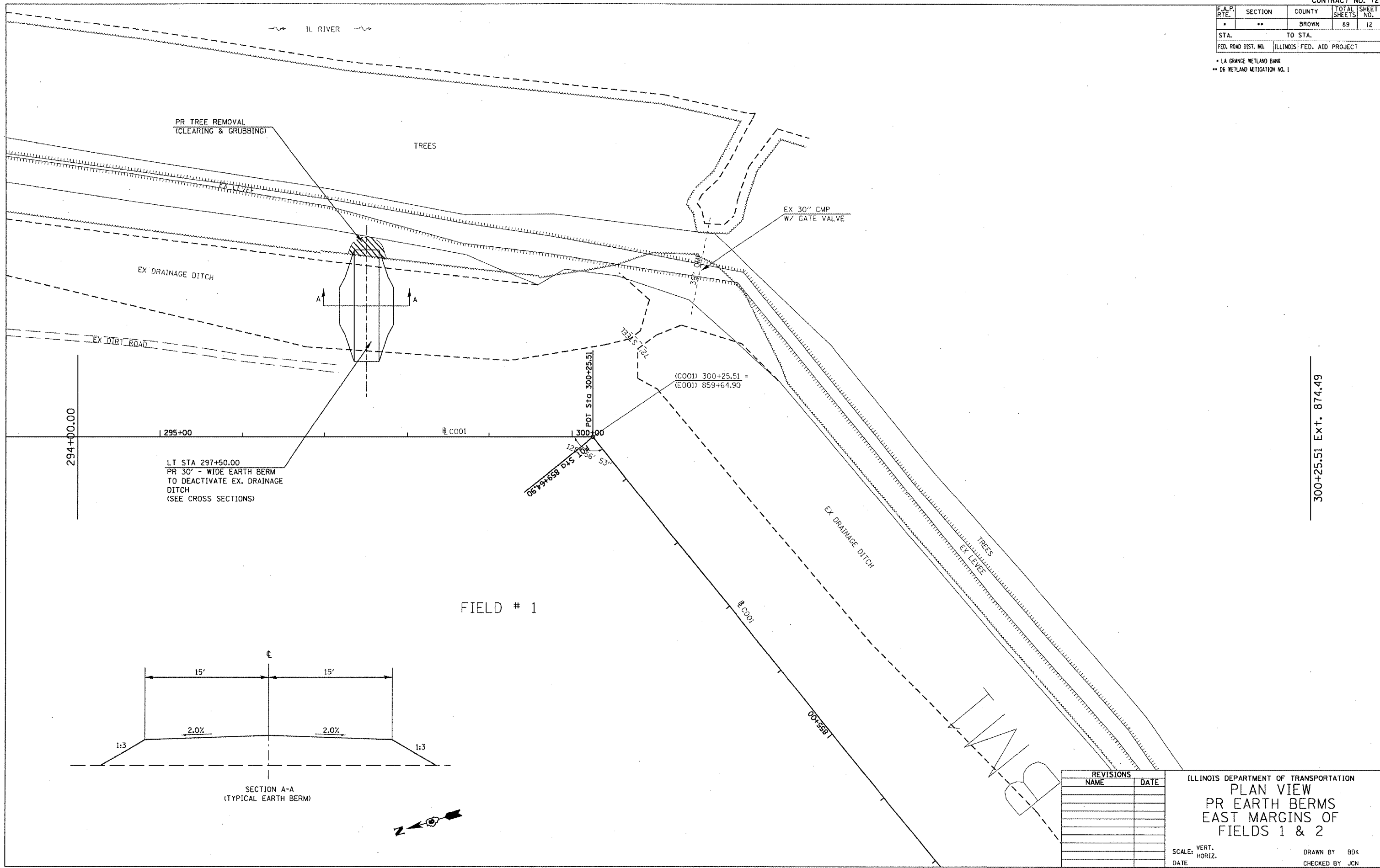


F.A.P. RTE.	SECTION	COUNTY	TOTAL SHEETS	SHEET NO.
	**	BROWN	89	12
STA.		TO STA.		
FED. ROAD DIST. NO.		ILLINOIS FED. AID PROJECT		

* LA GRANGE WETLAND BANK
 ** D6 WETLAND MITIGATION NO. 1



294+00.00

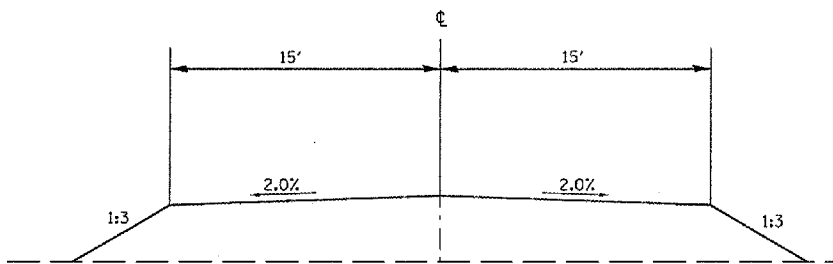
LT STA 297+50.00
 PR 30' - WIDE EARTH BERM
 TO DEACTIVATE EX. DRAINAGE
 DITCH
 (SEE CROSS SECTIONS)

POT. STA. 300+25.51
 128.84
 105.6' 53'
 06+34+65.9 DIS 105.6' 53'

(C001) 300+25.51 =
 (E001) 859+64.90

300+25.51 Ext. 874.49

FIELD # 1



SECTION A-A
 (TYPICAL EARTH BERM)



REVISIONS	
NAME	DATE

ILLINOIS DEPARTMENT OF TRANSPORTATION
PLAN VIEW
 PR EARTH BERMS
 EAST MARGINS OF
 FIELDS 1 & 2

SCALE: VERT. _____
 HORIZ. _____
 DATE _____
 DRAWN BY BDK
 CHECKED BY JCN

PLOT DATE : 2/1/2005
 FILE NAME : c:\projects\72939\plan\p12.dgn
 PLOT SCALE : 1" = 40'
 REFERENCE : REF#