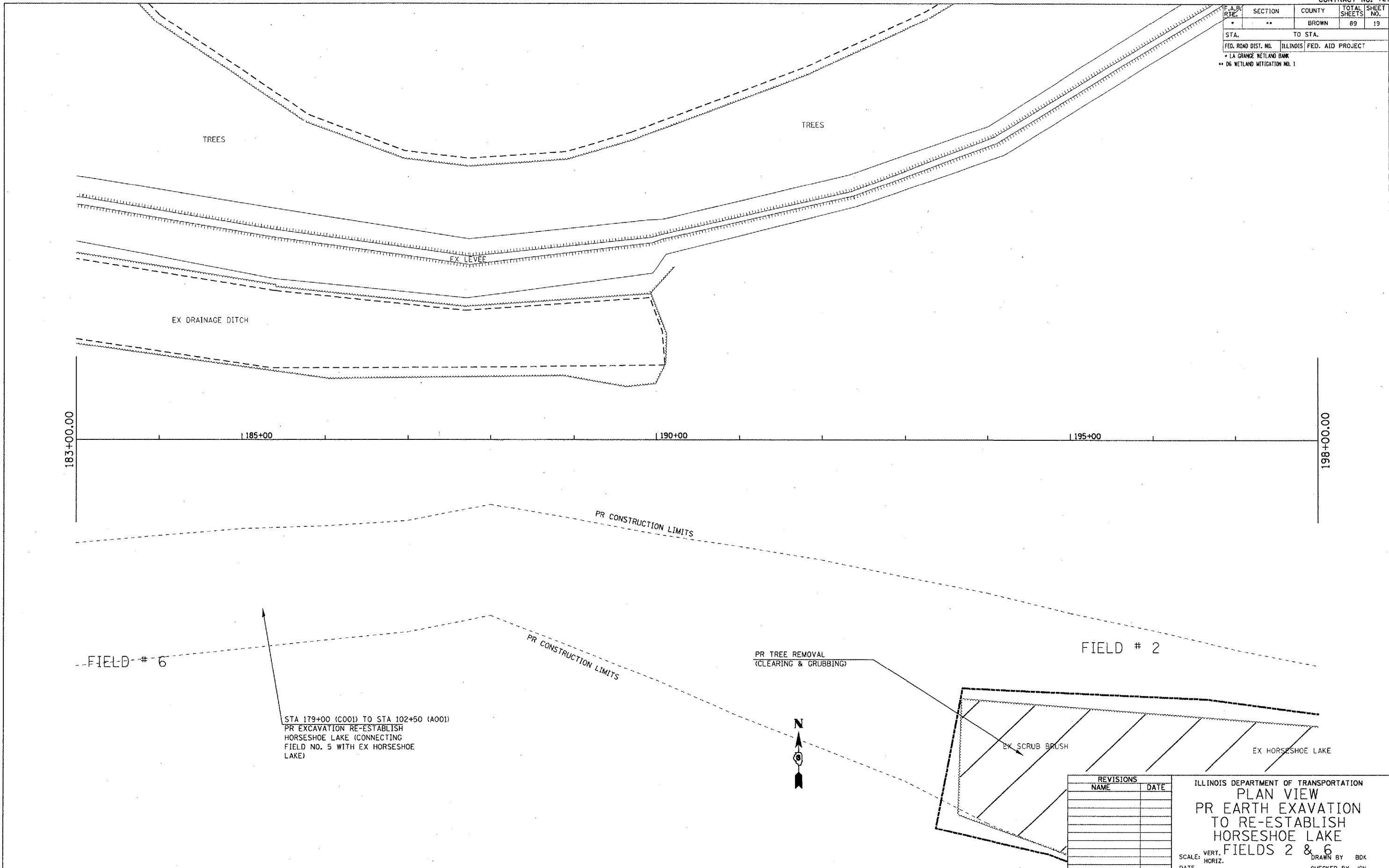


F.A.P. RYE	SECTION	COUNTY	TOTAL SHEETS	SHEET NO.
*	**	BROWN	89	19
STA.		TO STA.		
FED. ROAD DIST. NO.		ILLINOIS	FED. AID PROJECT	
* LA GRANGE WETLAND BANK				
** DG WETLAND MITIGATION NO. 1				



STA 179+00 (C001) TO STA 102+50 (A001)  
 PR EXCAVATION RE-ESTABLISH  
 HORSESHOE LAKE (CONNECTING  
 FIELD NO. 5 WITH EX HORSESHOE  
 LAKE)

REVISIONS	
NAME	DATE

ILLINOIS DEPARTMENT OF TRANSPORTATION  
 PLAN VIEW  
 PR EARTH EXCAVATION  
 TO RE-ESTABLISH  
 HORSESHOE LAKE  
 FIELDS 2 & 6  
 SCALE: VERT. \_\_\_\_\_ DRAWN BY BDK  
 DATE \_\_\_\_\_ HORIZ. \_\_\_\_\_ CHECKED BY JCN

PLT DATE = 2/19/2005  
 FILE NAME = \\s01\share\72939\plan\p05.dgn  
 PLT SCALE = 1/8"=1'-0"  
 REFERENCE = #REF\*