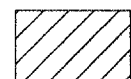
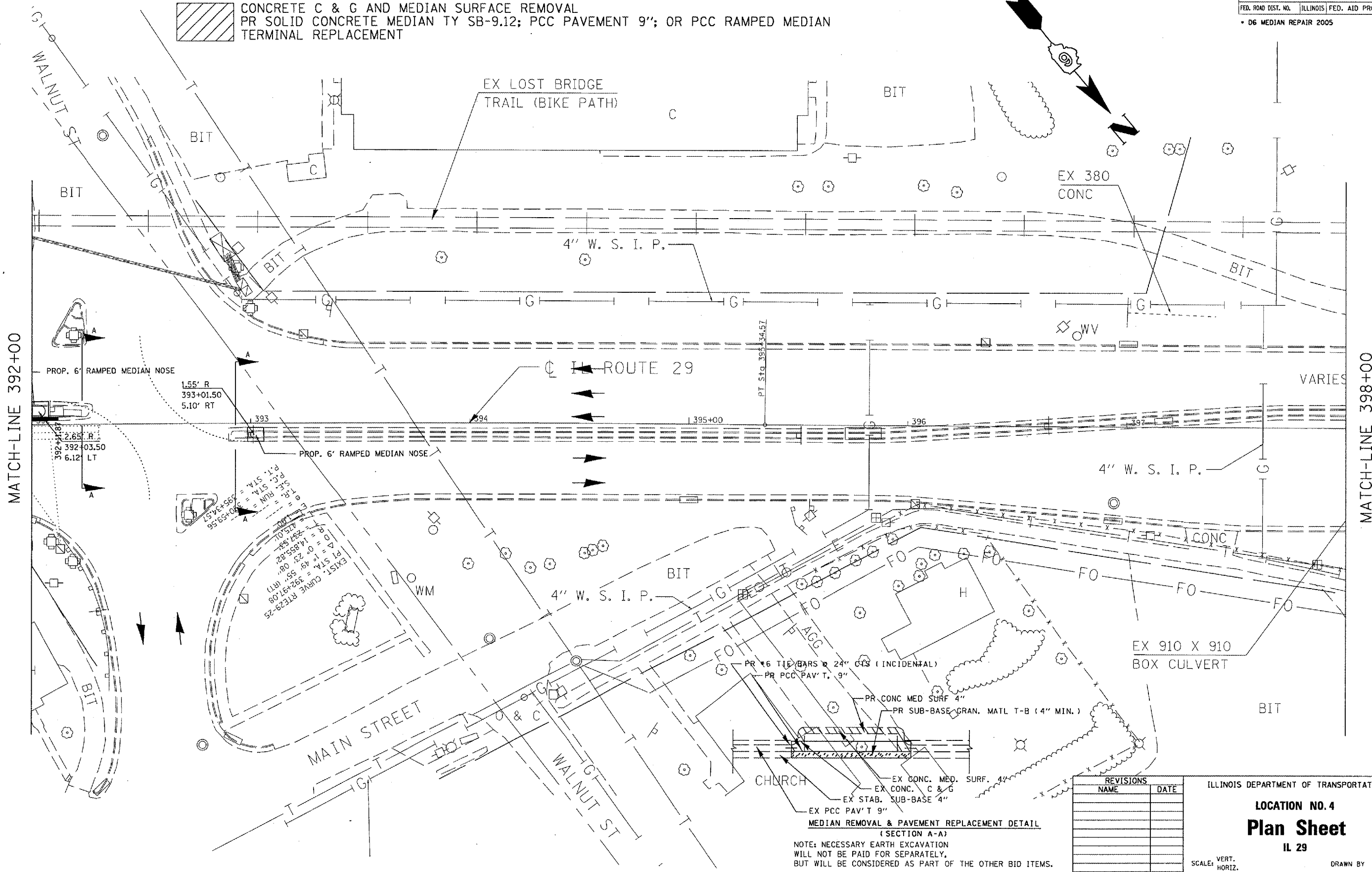


F.A.P. RTE.	SECTION	COUNTY	TOTAL SHEETS	SHEET NO.
662		SANGAMON	18	15
STA.		TO STA.		
FED. ROAD DIST. NO.		ILLINOIS FED. AID PROJECT		

• D6 MEDIAN REPAIR 2005

CONCRETE CURB & GUTTER REMOVAL & REPLACEMENT

 CONCRETE C & G AND MEDIAN SURFACE REMOVAL  
 PR SOLID CONCRETE MEDIAN TY SB-9.12; PCC PAVEMENT 9"; OR PCC RAMPED MEDIAN  
 TERMINAL REPLACEMENT



MATCH-LINE 392+00

MATCH-LINE 398+00

**MEDIAN REMOVAL & PAVEMENT REPLACEMENT DETAIL**  
(SECTION A-A)

NOTE: NECESSARY EARTH EXCAVATION  
WILL NOT BE PAID FOR SEPARATELY,  
BUT WILL BE CONSIDERED AS PART OF THE OTHER BID ITEMS.

REVISIONS	
NAME	DATE

ILLINOIS DEPARTMENT OF TRANSPORTATION

**LOCATION NO. 4**

**Plan Sheet**

IL 29

SCALE: VERT. \_\_\_\_\_  
HORIZ. \_\_\_\_\_

DATE \_\_\_\_\_

DRAWN BY: BOK  
CHECKED BY: JCN

PLOT DATE = 2/18/2005  
 PLOT SCALE = 41.3725" / IN.  
 REFERENCE = #REF#