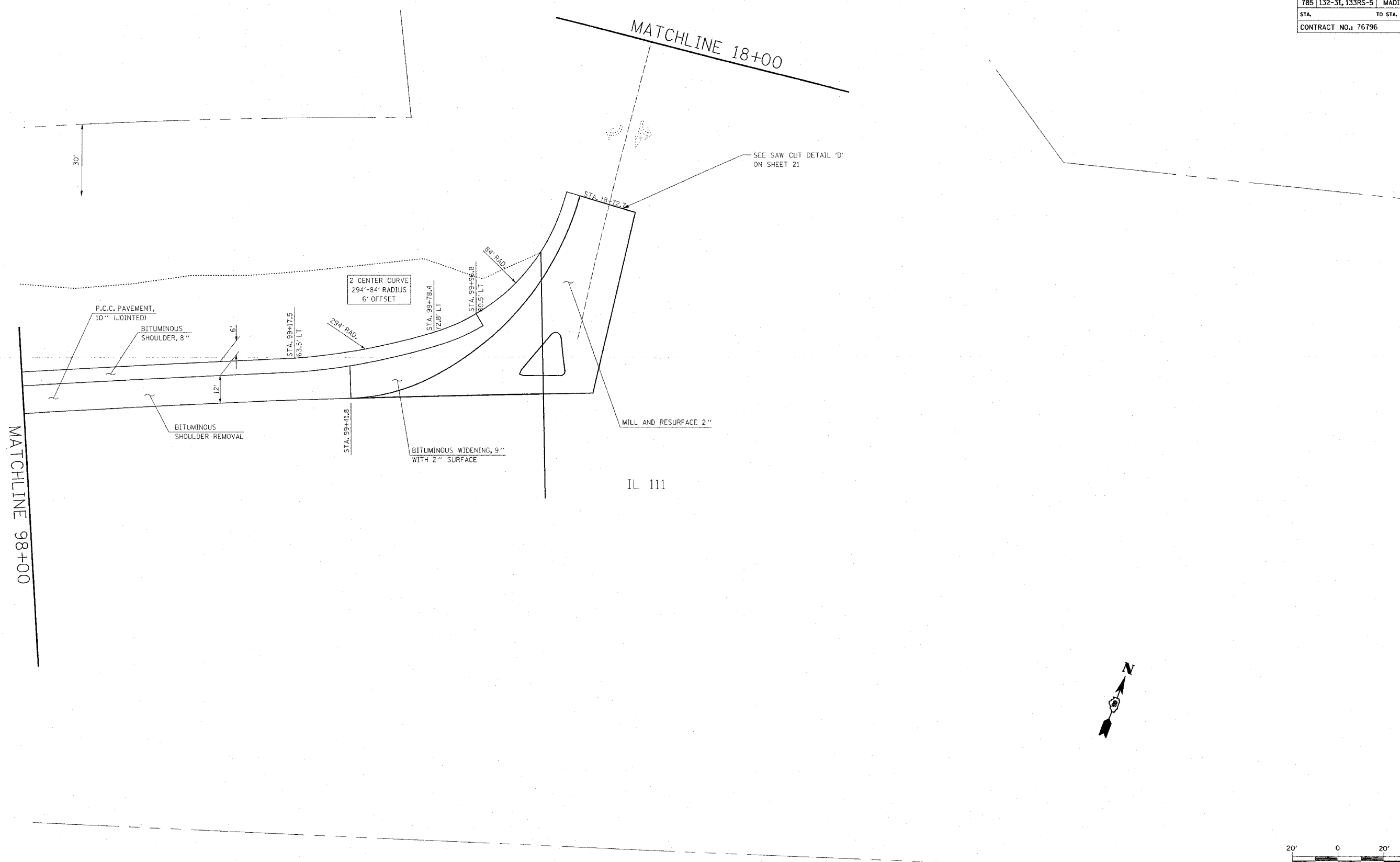
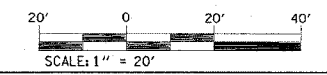


FAP ROUTE	SECTION	COUNTY	TOTAL SHEETS	SHEET NO
785	132-31, 133RS-5	MADISON	29	12
STA.		TO STA.		
CONTRACT NO.: 76796				

PLAN	SURVEYED	BY	DATE
NO.	PLOTTED		
	CHECKED		
	BY		
	FILE NAME		



IL 111



REVISIONS	
NAME	DATE

ILLINOIS DEPARTMENT OF TRANSPORTATION
PLAN VIEW
LOCATION 1
IL 111/140 & FOSTERBURG RD
 FAP ROUTE 785
 SECTION 132-31, 133RS-5
 MADISON COUNTY
 DRAWN BY:

PLOT DATE: Tuesday February 08, 2005 @ 11:24:41 AM

2/8/2005 11:24:41 AM
 c:\projects\785\plan\01\08784.dgn LV1-8,10-03