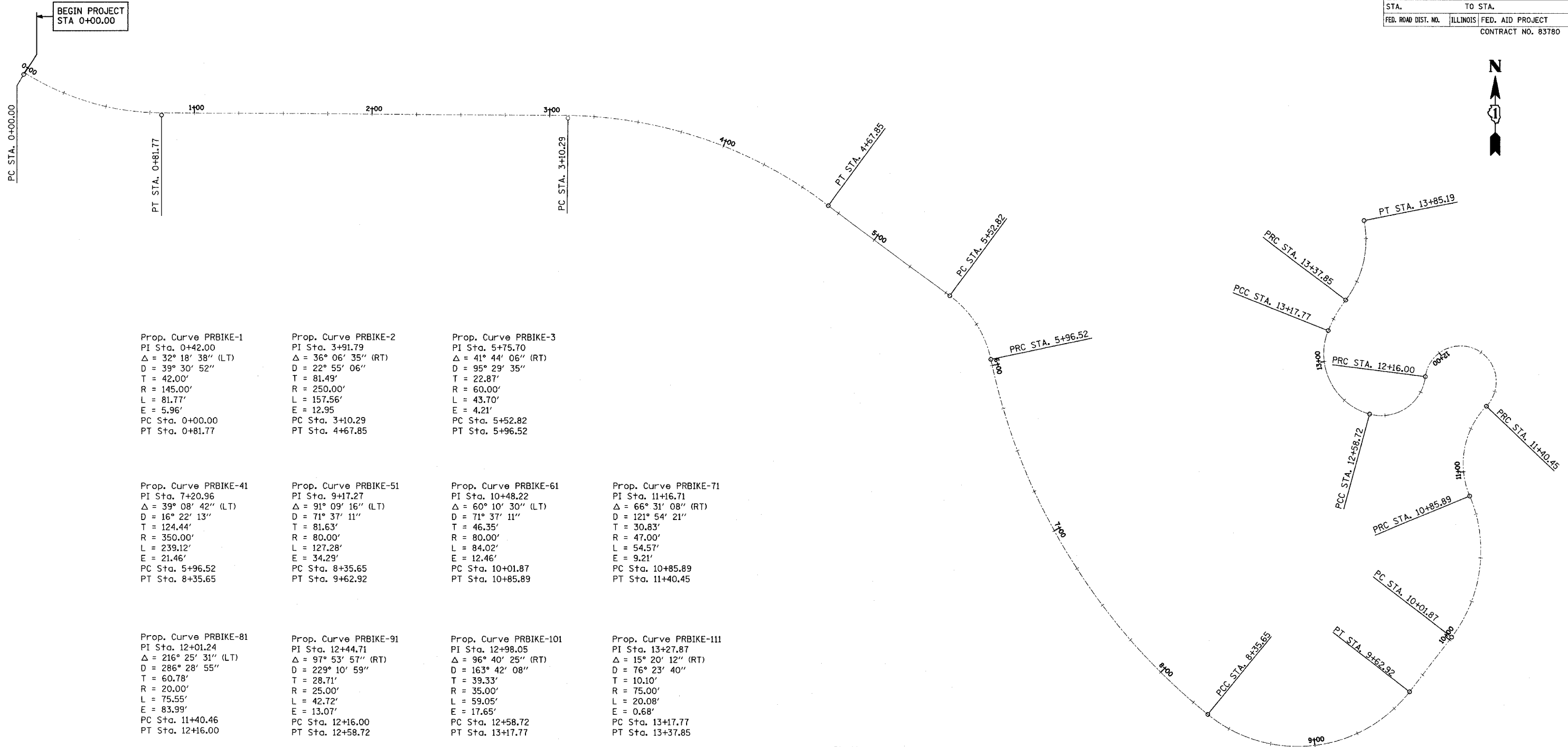


F.A.P. RTE.	SECTION	COUNTY	TOTAL SHEETS	SHEET NO.
	01-00177-00-BT	COOK	18	5
STA.	TO STA.			
FED. ROAD DIST. NO.	ILLINOIS	FED. AID PROJECT		
CONTRACT NO. 83780				



<p>Prop. Curve PRBIKE-1 PI Sta. 0+42.00 $\Delta = 32^\circ 18' 38''$ (LT) D = 39' 30' 52" T = 42.00' R = 145.00' L = 81.77' E = 5.96' PC Sta. 0+00.00 PT Sta. 0+81.77</p>	<p>Prop. Curve PRBIKE-2 PI Sta. 3+91.79 $\Delta = 36^\circ 06' 35''$ (RT) D = 22' 55' 06" T = 81.49' R = 250.00' L = 157.56' E = 12.95' PC Sta. 3+10.29 PT Sta. 4+67.85</p>	<p>Prop. Curve PRBIKE-3 PI Sta. 5+75.70 $\Delta = 41^\circ 44' 06''$ (RT) D = 95' 29' 35" T = 22.87' R = 60.00' L = 43.70' E = 4.21' PC Sta. 5+52.82 PT Sta. 5+96.52</p>	<p>Prop. Curve PRBIKE-41 PI Sta. 7+20.96 $\Delta = 39^\circ 08' 42''$ (LT) D = 16' 22' 13" T = 124.44' R = 350.00' L = 239.12' E = 21.46' PC Sta. 5+96.52 PT Sta. 8+35.65</p>	<p>Prop. Curve PRBIKE-51 PI Sta. 9+17.27 $\Delta = 91^\circ 09' 16''$ (LT) D = 71' 37' 11" T = 81.63' R = 80.00' L = 127.28' E = 34.29' PC Sta. 8+35.65 PT Sta. 9+62.92</p>	<p>Prop. Curve PRBIKE-61 PI Sta. 10+48.22 $\Delta = 60^\circ 10' 30''$ (LT) D = 71' 37' 11" T = 46.35' R = 80.00' L = 84.02' E = 12.46' PC Sta. 10+01.87 PT Sta. 10+85.89</p>	<p>Prop. Curve PRBIKE-71 PI Sta. 11+16.71 $\Delta = 66^\circ 31' 08''$ (RT) D = 121' 54' 21" T = 30.83' R = 47.00' L = 54.57' E = 9.21' PC Sta. 10+85.89 PT Sta. 11+40.45</p>	<p>Prop. Curve PRBIKE-81 PI Sta. 12+01.24 $\Delta = 216^\circ 25' 31''$ (LT) D = 286' 28' 55" T = 60.78' R = 20.00' L = 75.55' E = 83.99' PC Sta. 11+40.46 PT Sta. 12+16.00</p>	<p>Prop. Curve PRBIKE-91 PI Sta. 12+44.71 $\Delta = 97^\circ 53' 57''$ (RT) D = 229' 10' 59" T = 28.71' R = 25.00' L = 42.72' E = 13.07' PC Sta. 12+16.00 PT Sta. 12+58.72</p>	<p>Prop. Curve PRBIKE-101 PI Sta. 12+98.05 $\Delta = 96^\circ 40' 25''$ (RT) D = 163' 42' 08" T = 39.33' R = 35.00' L = 59.05' E = 17.65' PC Sta. 12+58.72 PT Sta. 13+17.77</p>	<p>Prop. Curve PRBIKE-111 PI Sta. 13+27.87 $\Delta = 15^\circ 20' 12''$ (RT) D = 76' 23' 40" T = 10.10' R = 75.00' L = 20.08' E = 0.68' PC Sta. 13+17.77 PT Sta. 13+37.85</p>	<p>Prop. Curve PRBIKE-121 PI Sta. 13+63.04 $\Delta = 48^\circ 25' 56''$ (LT) D = 102' 18' 50" T = 25.19' R = 56.00' L = 47.34' E = 5.40' PC Sta. 13+37.85 PT Sta. 13+85.19</p>
---	---	--	---	---	---	---	---	--	---	---	--

BM 1992 EAST FLANGE BOLT OF FIRE HYDRANT ON NORTHWEST CORNER OF GREENLEAF AVE. AND 3RD ST., ELEV. = 25.65

PLAN	DATE
NO.	BY
NO.	BY
NO.	BY
NO.	BY
NO.	BY

PROFILE	DATE
NO.	BY
NO.	BY
NO.	BY
NO.	BY
NO.	BY

REVISIONS	
NAME	DATE

ILLINOIS DEPARTMENT OF TRANSPORTATION
 SHERIDAN ROAD BIKE PATH
 PROPOSED ALIGNMENT
 AND BENCHMARKS
 SCALE: 1"=20'-0"
 DATE: 11/05/2004
 DRAWN BY: MPG
 CHECKED BY: