

F.A.U. RTE.	SECTION	COUNTY	TOTAL SHEETS	SHEET NO.
	01-00177-00-BT	COOK	18	1
FED. ROAD DIST. NO.	ILLINOIS	FED. AID PROJECT		
CONTRACT NO. 83780				

INDEX OF SHEETS

FOR INDEX OF SHEETS, SEE SHEET NO. 2

PROJECT LOCATED IN VILLAGE OF WILMETTE

DESIGN DESIGNATION

PROPOSED IMPROVEMENT

THE PROJECT INVOLVES THE CONSTRUCTION OF APPROXIMATELY 1,385 LINEAR FEET OF BIKEWAY AND OTHER RELATED WORK FROM CENTRAL AVENUE TO HARBOUR DRIVE.

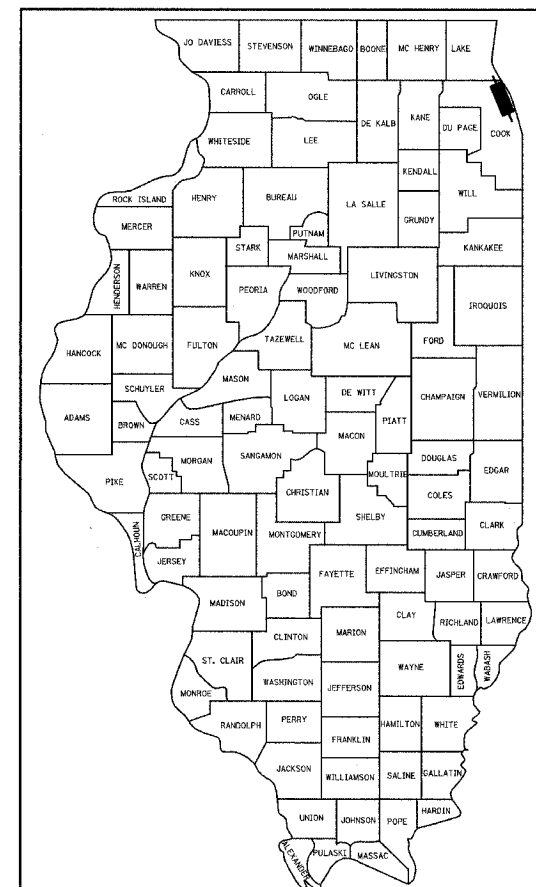
STATE OF ILLINOIS
DEPARTMENT OF TRANSPORTATION
DIVISION OF HIGHWAYS

**PLANS FOR PROPOSED
LOCAL AGENCY IMPROVEMENT**

SHERIDAN ROAD BIKEWAY
CENTRAL AVENUE TO HARBOUR DRIVE

VILLAGE OF WILMETTE
SECTION 01-00177-00-BT
PROJECT NO.: TE-00D1 (655)
BIKEWAY CONSTRUCTION

COOK COUNTY
JOB NO: C-91-067-05



LOCATION OF SECTION INDICATED THUS: -

R. 14 E.

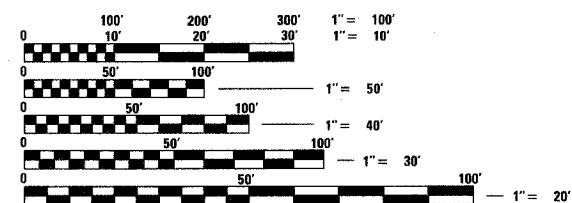
PROJECT BEGINS
STA 0+00.00



PROJECT
LOCATION

T. 42 N.

PROJECT ENDS
STA 13+85.19



FULL SIZE PLANS HAVE BEEN PREPARED USING STANDARD ENGINEERING SCALES, REDUCED SIZED PLANS WILL NOT CONFORM TO STANDARD SCALES. IN MAKING MEASUREMENTS ON REDUCED PLANS, THE ABOVE SCALES MAY BE USED.

J.U.L.I.E.
JOINT UTILITY LOCATION INFORMATION FOR EXCAVATION
1-800-892-0123

CONTRACT NO. 83780

NOT TO SCALE
WILMETTE TOWNSHIP

GROSS LENGTH OF PROJECT = 1385 FT. = 0.26 MI.
NET LENGTH OF PROJECT = 1385 FT. = 0.26 MI.

STATE OF ILLINOIS
DEPARTMENT OF TRANSPORTATION
DIVISION OF HIGHWAYS

APPROVED 02-22-05 20 05
Brigitte Mayerhofer
VILLAGE OF WILMETTE

APPROVED February 24, 20 05
[Signature]
BUREAU CHIEF OF LOCAL ROADS AND STREETS

APPROVED February 24, 20 05
[Signature]
DISTRICT ENGINEER



Signed Donald A. Jakesch
Donald A. Jakesch, P.E., Ill. Lic. No. 062-039374
Expires 11-30-2005

Date 02-18-05

PREPARED BY: T.Y. LIN INTERNATIONAL, INC.
CHARLES RIDDLE, FEDERAL AID PROGRAM ENGINEER. (847) 705-4406

F.A.P. RTE.	SECTION	COUNTY	TOTAL SHEETS	SHEET NO.
	01-00177-00-BT	COOK	18	2
STA.	TO STA.			
FED. ROAD DIST. NO.	ILLINOIS	FED. AID PROJECT		
CONTRACT NO. 83780				

GENERAL NOTES:

1. THE CONTRACTOR SHALL MAINTAIN ALL ROADWAYS OPEN TO TRAFFIC AS SHOWN PER THE MAINTENANCE OF TRAFFIC DETAILS.
2. BEFORE STARTING ANY EXCAVATION, THE CONTRACTOR SHALL CALL J.U.L.I.E. AT (800) 892-0123 FOR FIELD LOCATIONS OF BURIED ELECTRIC, TELEPHONE, CABLE, AND GAS FACILITIES (48 HOURS NOTIFICATION IS REQUIRED). CONTACT VILLAGE ENGINEER, VILLAGE OF WILMETTE AT (847) 853-7660. FOR WATER, SEWER AND VILLAGE ELECTRIC LOCATIONS.
3. THE CONTRACTOR SHALL NOT BE ALLOWED TO ERECT A YARD OR FIELD OFFICE ON VILLAGE RIGHT-OF-WAY OR PROPERTY WITHOUT WRITTEN PERMISSION FROM THE VILLAGE.
4. THE ENGINEER SHALL BE THE SOLE JUDGE CONCERNING THE PROPER CURING TIME FOR THE VARIOUS BITUMINOUS LIFTS.
5. ALL ELEVATIONS REFER TO U.S.G.S. MEAN SEA LEVEL DATUM 1929.
6. NO WORK SHALL COMMENCE UNTIL TRAFFIC CONTROL TREE PROTECTION AND PERIMETER EROSION BARRIER REQUIREMENTS ARE MET.
7. ALL UTILITIES, SCHOOL DISTRICTS, PARK DISTRICT, LOCAL POLICE, AND FIRE DEPARTMENTS SHALL BE NOTIFIED BY THE CONTRACTOR PRIOR TO THE START OF CONSTRUCTION.
8. UNLESS AUTHORIZED BY THE ENGINEER, ALL EXISTING ACCESS POINTS SHALL BE MAINTAINED AT ALL TIMES BY THE CONTRACTOR.
9. BOXED ITEMS ARE INCLUDED IN THIS CONTRACT AND SHALL NOT BE PAID FOR SEPARATELY UNDER ANY ITEM OF WORK.
10. TREES NOT MARKED FOR REMOVAL SHALL BE CONSIDERED AS DESIGNATED TO BE SAVED AND SHALL BE PROTECTED UNDER THE PROVISIONS OF ARTICLE 201.05 OF THE STANDARD SPECIFICATIONS.
11. ALL LIMBS, BRANCHES, AND OTHER DEBRIS RESULTING FROM THIS WORK SHALL BE DISPOSED OF BY THE CONTRACTOR AT HIS OWN EXPENSE OUTSIDE THE LIMITS OF THE RIGHT-OF-WAY.
12. ALL CLEARING, REMOVAL OF BUSHES, HEDGES AND TREES UNDER SIX (6) INCHES IN DIAMETER WILL BE INCLUDED IN THE CONTRACT UNIT PRICE FOR EARTH EXCAVATION.
13. DURING THE CONSTRUCTION, THE CONTRACTOR WILL BE REQUIRED, AT HIS EXPENSE, TO HAVE AVAILABLE A WATER TRUCK OR SIMILAR EQUIPMENT TO CONTROL DUST. IF NECESSARY, THE CONTRACTOR SHALL BE REQUIRED TO CONTROL DUST DURING NON-WORKING HOURS.
14. THE CONTRACTOR MUST MAKE PRIOR ARRANGEMENTS WITH THE VILLAGE OF WILMETTE WATER DEPARTMENT PRIOR TO THE USE OF ANY FIRE HYDRANT. HYDRANT METERS AND RPZ'S MUST BE USED. CONTACT THE ENGINEERING DEPARTMENT AT (847) 853-7660.
15. ALL OPEN EXCAVATIONS MUST BE ADEQUATELY COVERED (STEEL PLATED) OR FILLED IN AT THE END OF EACH DAY. NO OPEN EXCAVATIONS ARE ALLOWED OVERNIGHT. THE COST OF THIS WORK SHALL BE INCLUDED IN THE COST OF THE ITEM REQUIRING EXCAVATION.

INDEX OF STATE STANDARDS

STD. NO.	TITLE
000001 - 04	STANDARD SYMBOLS, ABBREVIATIONS AND PATTERNS
424001 - 03	RAMPS ACCESSIBLE TO THE DISABLED
606001 - 02	CONCRETE CURB AND COMBINATION CONCRETE CURB AND GUTTER
701502 - 01	URBAN LANE CLOSURE 2L, 2W WITH BIDIRECTIONAL LEFT TURN LANE
701801 - 03	LANE CLOSURE MULTILANE 1W OR 2W CROSSWALK OR SIDEWALK CLOSURE
702001 - 05	TRAFFIC CONTROL DEVICES
720001	SIGN PANEL MOUNTING DETAILS
720006	SIGN PANEL ERECTION DETAILS
720011	METAL POSTS FOR SIGNS, MARKERS & DELINEATORS
729001	APPLICATION OF TYPE A AND TYPE B METAL POSTS
814001	CONCRETE HANDHOLES

COMMITMENTS

THE CONTRACTOR WILL NOT BE ALLOWED ACCESS TO OR USE OF ANY OF THE DOCK AREAS ADJACENT TO THE NORTH SHORE CHANNEL AT ANY TIME DURING CONSTRUCTION.

INDEX OF SHEETS

SHEET NO.	SHEET TITLE
1	COVER SHEET
2	GENERAL NOTES, STATE STANDARDS AND INDEX OF SHEETS
3	SUMMARY OF QUANTITIES
4	EXISTING AND PROPOSED TYPICAL SECTIONS
5	PROPOSED ALIGNMENT AND BENCHMARKS
6-7	EXISTING AND PROPOSED PLAN
8	PROPOSED PROFILE AND DETAILS
9	PROPOSED GRADING PLAN
10	DETAILS
11	ELECTRICAL GENERAL NOTES AND DETAILS
12	ELECTRICAL PLAN
13-15	DISTRICT 1 STANDARDS AND DETAILS
16-18	CROSS SECTIONS

PLAN	SUBMITTED	DATE
NOTE BOOK	PLOTTED	BY
NO.	REVIEWED	
	BY	
	DATE	
	BY	
	DATE	

PROFILE	SUBMITTED	DATE
NOTE BOOK	PLOTTED	BY
NO.	REVIEWED	
	BY	
	DATE	
	BY	
	DATE	

REVISIONS		ILLINOIS DEPARTMENT OF TRANSPORTATION SHERIDAN ROAD BIKE PATH GENERAL NOTES, STATE STANDARDS AND INDEX OF SHEETS
NAME	DATE	
SCALE: NONE	DRAWN BY: MB	
DATE: 11/05/2004	CHECKED BY:	

SUMMARY OF QUANTITIES

CODE NO.	ITEM	UNIT	TOTAL QUANTITIES	ROADWAY Y052	LIGHTING Y030
20100110	TREE REMOVAL (6 TO 15 UNITS DIAMETER)	UNITS	14	14	
20100210	TREE REMOVAL OVER 15 UNITS DIAMETER	UNITS	18	18	
20101100	TREE TRUNK PROTECTION	EACH	15	15	
* 20101200	TREE ROOT PRUNING	EACH	20	20	
20200100	EARTH EXCAVATION	CU YD	297	297	
20201200	REMOVAL AND DISPOSAL OF UNSUITABLE MATERIAL	CU YD	82	82	
20700220	POROUS GRANULAR EMBANKMENT	CU YD	30	30	
21101615	TOPSOIL FURNISH AND PLACE, 4"	SQ YD	635	635	
* 25000400	NITROGEN FERTILIZER NUTRIENT	LBS	12	12	
* 25000500	POTASSIUM FERTILIZER NUTRIENT	LBS	12	12	
* 25000600	PHOSPHOROUS FERTILIZER NUTRIENT	LBS	12	12	
* 25200100	SODDING	SQ YD	635	635	
25301400	TREES TO BE TRANSPLANTED 4-4 1/2"	EACH	1	1	
28000400	PERIMETER EROSION BARRIER	FOOT	110	110	
35102100	AGGREGATE BASE COURSE, TYPE B 9"	SQ YD	422	422	
40400100	BITUMINOUS MATERIALS (PRIME COAT)	GAL	290	290	
40600400	MIXTURE FOR CRACKS, JOINTS, AND FLANGEWAYS	TON	2	2	
40600985	PORTLAND CEMENT CONCRETE SURFACE REMOVAL - BUTT JOINT	SQ YD	6	6	
42300200	PORTLAND CEMENT CONCRETE DRIVEWAY PAVEMENT, 6"	SQ YD	64	64	
42300400	PORTLAND CEMENT CONCRETE DRIVEWAY PAVEMENT, 8"	SQ YD	99	99	
42400200	PORTLAND CEMENT CONCRETE SIDEWALK, 5"	SQ FT	4993	4993	
44000200	DRIVEWAY PAVEMENT REMOVAL	SQ YD	161	161	
44000500	COMBINATION CURB AND GUTTER REMOVAL	FOOT	69	69	
44000600	SIDEWALK REMOVAL	SQ FT	3394	3394	
44001000	BITUMINOUS CONCRETE SURFACE REMOVAL	SQ YD	749	749	
60300305	FRAMES AND LIDS TO BE ADJUSTED	EACH	5	5	
60603800	COMBINATION CONCRETE CURB AND GUTTER TYPE B-6.12	FOOT	24	24	
* 70101800	TRAFFIC CONTROL AND PROTECTION (SPECIAL)	L SUM	1	1	
* 72000100	SIGN PANEL, TYPE 1	SQ FT	40	40	
* 72900100	METAL POST - TYPE A	FOOT	61	61	
* 78001110	PAINT PAVEMENT MARKING - LINE 4"	FOOT	4156	4156	
* 78001150	PAINT PAVEMENT MARKING - LINE 12"	FOOT	80	80	
* 78001180	PAINT PAVEMENT MARKING - LINE 24"	FOOT	20	20	
* 80700135	GROUND ROD, 5/8" DIA. X 8 FT.	EACH	8		8
* 81001000	CONDUIT IN TRENCH, 4" DIA., GALVANIZED STEEL	FOOT	48		48
* 81400100	HANDHOLE	EACH	3		3
* 81500200	TRENCH AND BACKFILL FOR ELECTRICAL WORK	FOOT	542		542
* 81600915	UNIT DUCT, 3*6XLP, 1*6 XLP GROUND 1" POLYETHYLENE	FOOT	588		588
* 83600410	POLE FOUNDATION, SPECIAL	EACH	6		6
* X0301446	GATE, SPECIAL	EACH	1	1	
* X0322923	SEGMENTAL CONCRETE BLOCK WALL	SQ FT	1047	1047	
X0350805	FOLD DOWN BOLLARDS	EACH	3	3	
X4066414	BITUMINOUS CONCRETE SURFACE COURSE, SUPERPAVE, MIXTURE C, N50	TON	156	156	
X4066765	LEVELING BINDER (MACHINE METHOD), SUPERPAVE, N50	TON	17	17	
* X8570100	DISCONNECT SWITCH	EACH	2	2	
XX006067	PIPE UNDERDRAINS, PERFORATED PVC, 6 INCH	FOOT	240	240	
* 20003900	BICYCLE RAILING	FOOT	332	332	
Z0077800	WOOD POST	EACH	3	3	

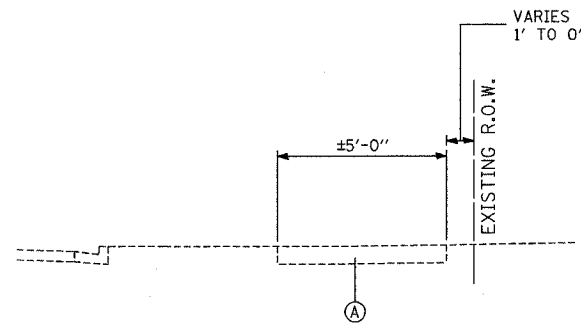
* - SPECIALTY ITEM

PLAN
 SURVEYED
 ALIGNMENT CHECKED
 CADD FILE NAME
 DATE
 BY
 NOTE BOOK NO.

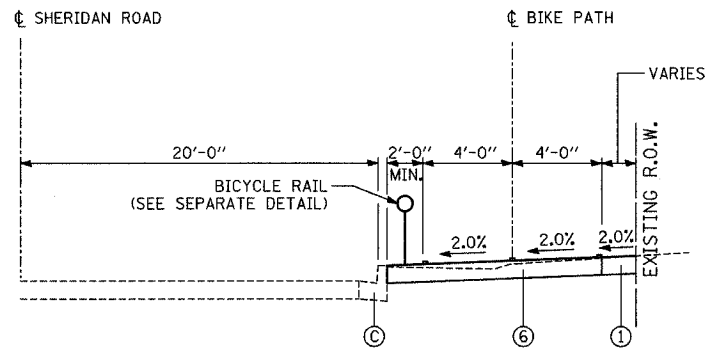
PROFILE
 SURVEYED
 GRADES CHECKED
 STRUCTURE NOTATION CTRD
 DATE
 BY
 NOTE BOOK NO.

REVISIONS	
NAME	DATE

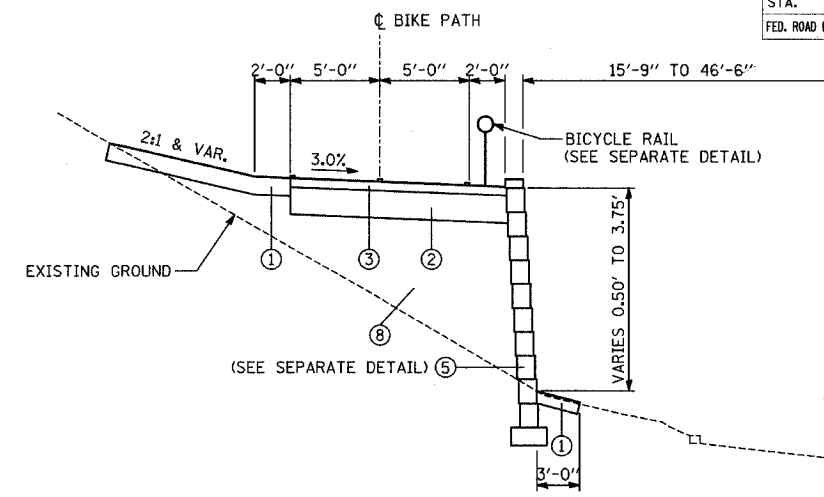
ILLINOIS DEPARTMENT OF TRANSPORTATION
 SHERIDAN ROAD BIKE PATH
 SUMMARY OF QUANTITIES
 SCALE: NONE
 DATE: 11/05/2004
 DRAWN BY:
 CHECKED BY:



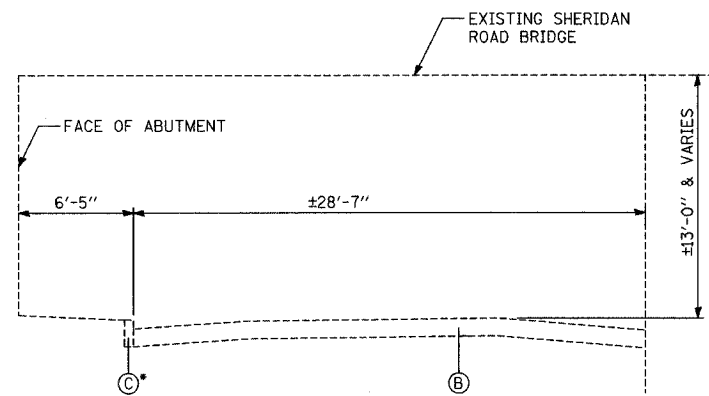
EXISTING TYPICAL SECTION
FROM STA 0+25 TO 5+62



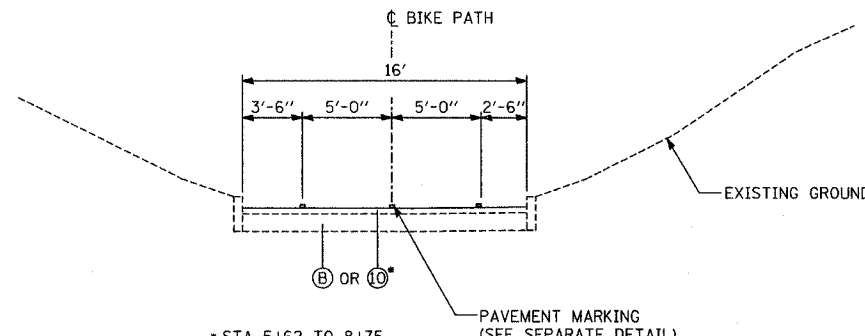
PROPOSED TYPICAL SECTION
FROM STA 3+52 TO 4+35



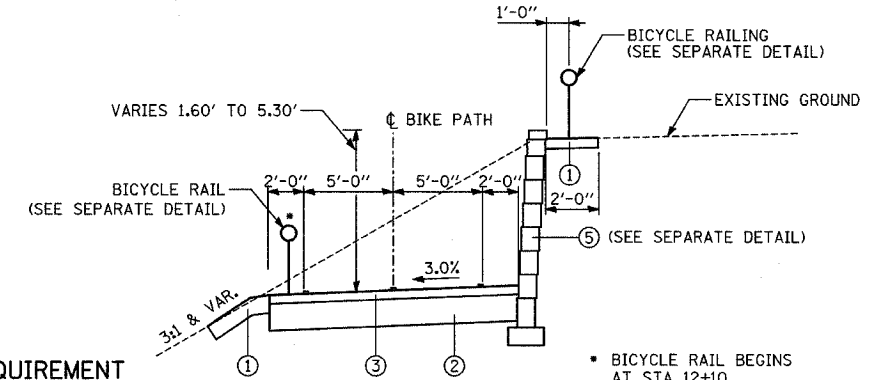
PROPOSED TYPICAL SECTION
FROM STA 10+70 TO 11+65



EXISTING TYPICAL SECTION
FROM STA 5+60 TO 10+60



PROPOSED TYPICAL SECTION
FROM STA 5+62 TO 9+93



PROPOSED TYPICAL SECTION
FROM STA 11+65 TO STA 12+45

• REMOVE PCC CURB STA 6+18 TO 7+64

• STA 5+62 TO 8+75
• STA 6+18 TO 7+64

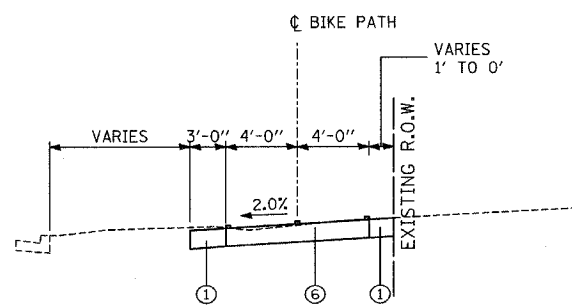
• BICYCLE RAIL BEGINS AT STA 12+10

BITUMINOUS MIXTURE REQUIREMENT

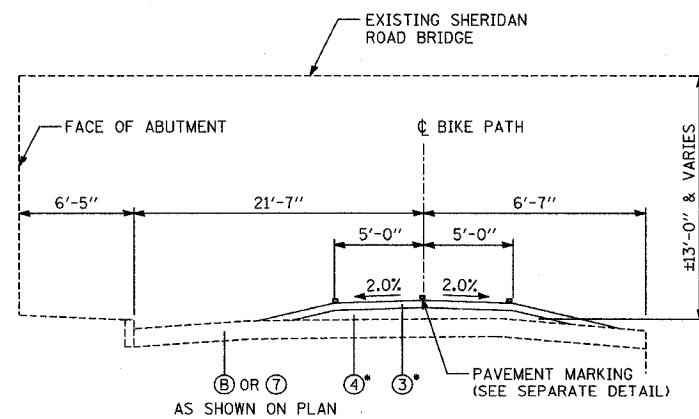
ITEM	AC TYPE	VOIDS	RAP%
BITUMINOUS CONCRETE SURFACE COURSE, SUPERPAVE, MIXTURE C, N50	PG 64-22	4% ₀ 50GYR	15%
LEVELING BINDER (MACHINE METHOD) SUPERPAVE, N50	PG 64-22	4% ₀ 50GYR	15%

LEGEND:

- (A) EXISTING PCC SIDEWALK, 5"
- (B) EXISTING PCC DRIVEWAY, 8"± OR BIT. OVER PCC DRIVEWAY
- (C) EXISTING PCC CURB OR CURB & GUTTER
- (1) TOPSOIL, 4" AND SODDING
- (2) AGGREGATE BASE COURSE, TYPE B - 9"
- (3) BITUMINOUS CONCRETE SURFACE COURSE, SUPERPAVE, MIX C, N50, 3"
- (4) LEVELING BINDER (MACHINE METHOD), SUPERPAVE, N50
- (5) SEGMENTAL CONCRETE BLOCK WALL
- (6) PORTLAND CEMENT CONCRETE SIDEWALK, 5"
- (7) PORTLAND CEMENT CONCRETE DRIVEWAY, 6"
- (8) POROUS GRANULAR EMBANKMENT
- (9) NOT USED
- (10) BITUMINOUS CONCRETE SURFACE COURSE, SUPERPAVE, MIX C, N50, 2"

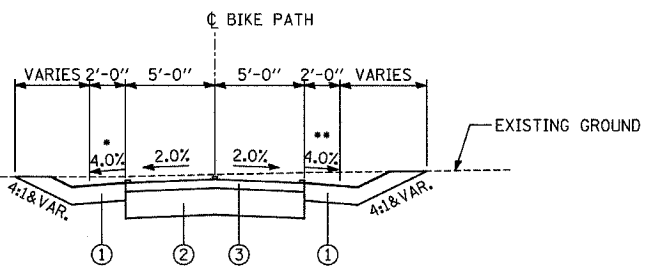


PROPOSED TYPICAL SECTION
FROM STA 0+00 TO 3+52
FROM STA 4+35 TO 5+62



PROPOSED TYPICAL SECTION
FROM STA 9+93 TO 10+70

• STA 10+35 TO 10+66



PROPOSED TYPICAL SECTION
FROM STA 12+45 TO STA 13+85.19

• CONCRETE BLOCK WALL AND ORNAMENTAL FENCE FROM STA 12+45 TO 12+85
• CONCRETE BLOCK WALL FROM STA 12+85 TO 13+10

REVISIONS	
NAME	DATE

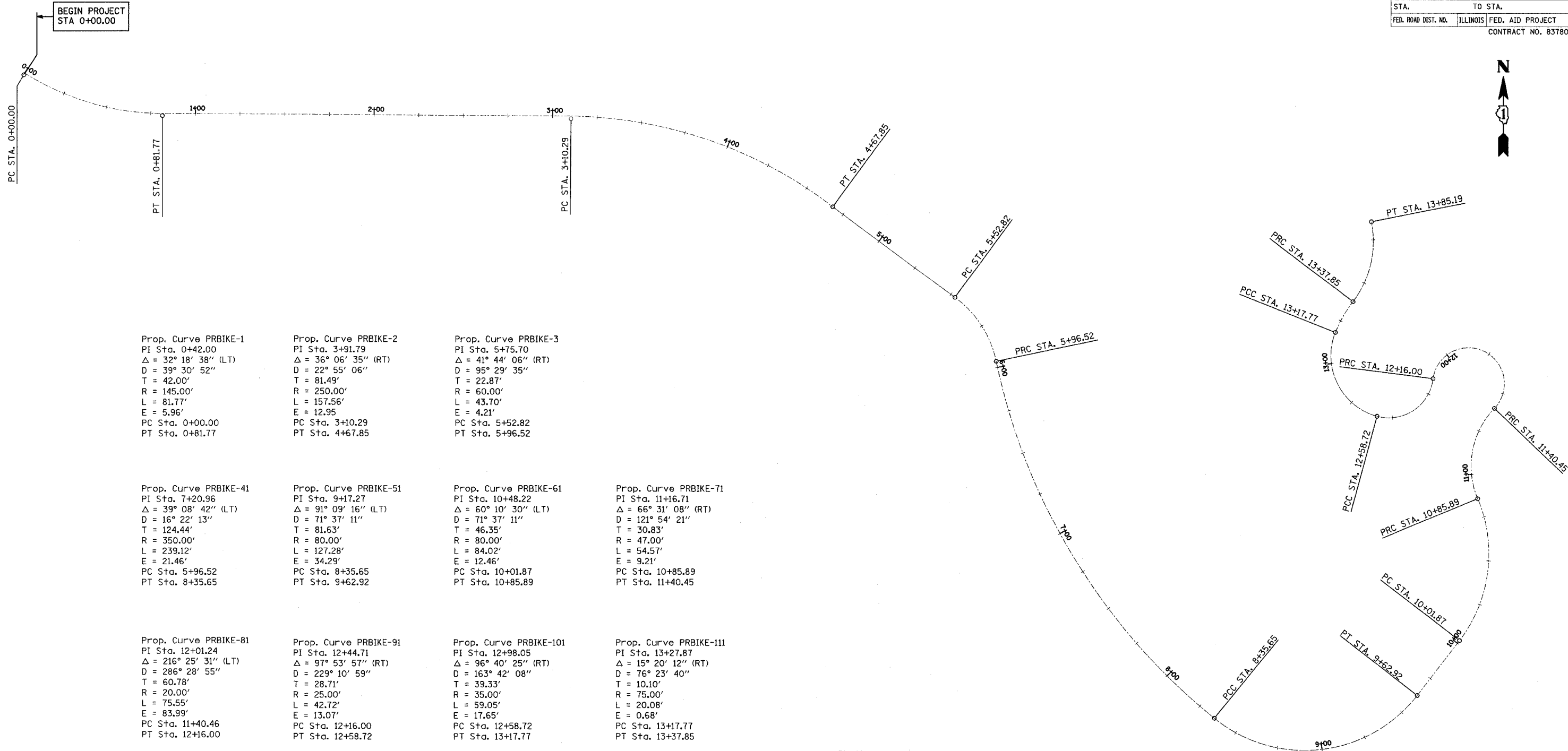
ILLINOIS DEPARTMENT OF TRANSPORTATION
SHERIDAN ROAD BIKE PATH
EXISTING AND PROPOSED
TYPICAL SECTIONS

SCALE: NONE
DATE: 11/05/2004
DRAWN BY: MB
CHECKED BY:

PLAN
DATE
BY
SURVEYED
CHECKED
ALIGNMENT
RT. OF WAY
NO. OF WAY CHECKED
NO. FILE NAME

PROFILE
DATE
BY
SURVEYED
CHECKED
E.M. NOTED
FRANCHISE NOTATIONS OK/NO

F.A.P. RTE.	SECTION	COUNTY	TOTAL SHEETS	SHEET NO.
	01-00177-00-BT	COOK	18	5
STA.		TO STA.		
FED. ROAD DIST. NO.	ILLINOIS	FED. AID PROJECT		
CONTRACT NO. 83780				



Prop. Curve PRBIKE-1
 PI Sta. 0+42.00
 $\Delta = 32^\circ 18' 38''$ (LT)
 D = 39' 30' 52"
 T = 42.00'
 R = 145.00'
 L = 81.77'
 E = 5.96'
 PC Sta. 0+00.00
 PT Sta. 0+81.77

Prop. Curve PRBIKE-2
 PI Sta. 3+91.79
 $\Delta = 36^\circ 06' 35''$ (RT)
 D = 22' 55' 06"
 T = 81.49'
 R = 250.00'
 L = 157.56'
 E = 12.95'
 PC Sta. 3+10.29
 PT Sta. 4+67.85

Prop. Curve PRBIKE-3
 PI Sta. 5+75.70
 $\Delta = 41^\circ 44' 06''$ (RT)
 D = 95' 29' 35"
 T = 22.87'
 R = 60.00'
 L = 43.70'
 E = 4.21'
 PC Sta. 5+52.82
 PT Sta. 5+96.52

Prop. Curve PRBIKE-41
 PI Sta. 7+20.96
 $\Delta = 39^\circ 08' 42''$ (LT)
 D = 16' 22' 13"
 T = 124.44'
 R = 350.00'
 L = 239.12'
 E = 21.46'
 PC Sta. 5+96.52
 PT Sta. 8+35.65

Prop. Curve PRBIKE-51
 PI Sta. 9+17.27
 $\Delta = 91^\circ 09' 16''$ (LT)
 D = 71' 37' 11"
 T = 81.63'
 R = 80.00'
 L = 127.28'
 E = 34.29'
 PC Sta. 8+35.65
 PT Sta. 9+62.92

Prop. Curve PRBIKE-61
 PI Sta. 10+48.22
 $\Delta = 60^\circ 10' 30''$ (LT)
 D = 71' 37' 11"
 T = 46.35'
 R = 80.00'
 L = 84.02'
 E = 12.46'
 PC Sta. 10+01.87
 PT Sta. 10+85.89

Prop. Curve PRBIKE-71
 PI Sta. 11+16.71
 $\Delta = 66^\circ 31' 08''$ (RT)
 D = 121' 54' 21"
 T = 30.83'
 R = 47.00'
 L = 54.57'
 E = 9.21'
 PC Sta. 10+85.89
 PT Sta. 11+40.45

Prop. Curve PRBIKE-81
 PI Sta. 12+01.24
 $\Delta = 216^\circ 25' 31''$ (LT)
 D = 286' 28' 55"
 T = 60.78'
 R = 20.00'
 L = 75.55'
 E = 83.99'
 PC Sta. 11+40.46
 PT Sta. 12+16.00

Prop. Curve PRBIKE-91
 PI Sta. 12+44.71
 $\Delta = 97^\circ 53' 57''$ (RT)
 D = 229' 10' 59"
 T = 28.71'
 R = 25.00'
 L = 42.72'
 E = 13.07'
 PC Sta. 12+16.00
 PT Sta. 12+58.72

Prop. Curve PRBIKE-101
 PI Sta. 12+98.05
 $\Delta = 96^\circ 40' 25''$ (RT)
 D = 163' 42' 08"
 T = 39.33'
 R = 35.00'
 L = 59.05'
 E = 17.65'
 PC Sta. 12+58.72
 PT Sta. 13+17.77

Prop. Curve PRBIKE-111
 PI Sta. 13+27.87
 $\Delta = 15^\circ 20' 12''$ (RT)
 D = 76' 23' 40"
 T = 10.10'
 R = 75.00'
 L = 20.08'
 E = 0.68'
 PC Sta. 13+17.77
 PT Sta. 13+37.85

Prop. Curve PRBIKE-121
 PI Sta. 13+63.04
 $\Delta = 48^\circ 25' 56''$ (LT)
 D = 102' 18' 50"
 T = 25.19'
 R = 56.00'
 L = 47.34'
 E = 5.40'
 PC Sta. 13+37.85
 PT Sta. 13+85.19

BM 1992 EAST FLANGE BOLT OF FIRE HYDRANT ON NORTHWEST CORNER OF GREENLEAF AVE. AND 3RD ST., ELEV. = 25.65

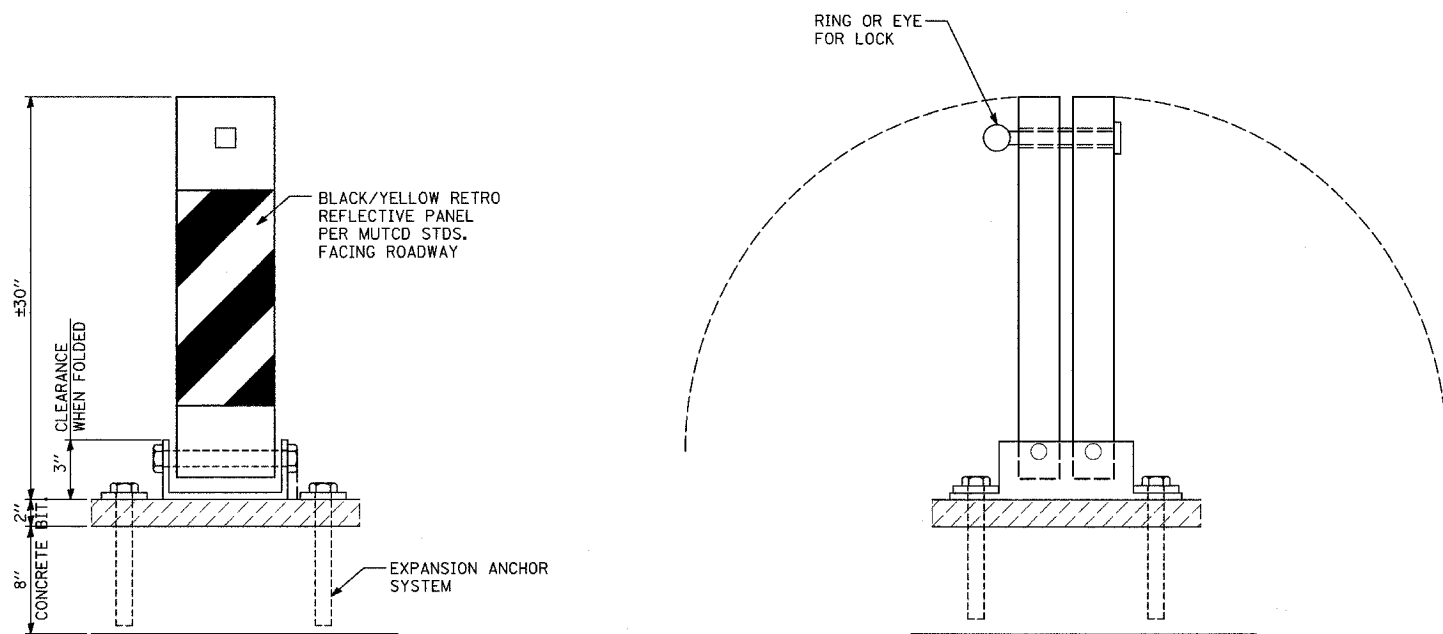
PLAN	DATE
NO.	BY
NO.	BY
NO.	BY
NO.	BY
NO.	BY

PROFILE	DATE
NO.	BY
NO.	BY
NO.	BY
NO.	BY
NO.	BY

REVISIONS	
NAME	DATE

ILLINOIS DEPARTMENT OF TRANSPORTATION
 SHERIDAN ROAD BIKE PATH
 PROPOSED ALIGNMENT
 AND BENCHMARKS
 SCALE: 1"=20'-0"
 DATE: 11/05/2004
 DRAWN BY: MPG
 CHECKED BY:

F.A.P. RTE.	SECTION	COUNTY	TOTAL SHEETS	SHEET NO.
	01-00177-00-BT	COOK	18	8
STA.	TO STA.			
FED. ROAD DIST. NO.	ILLINOIS	FED. AID PROJECT		
CONTRACT NO. 83780				

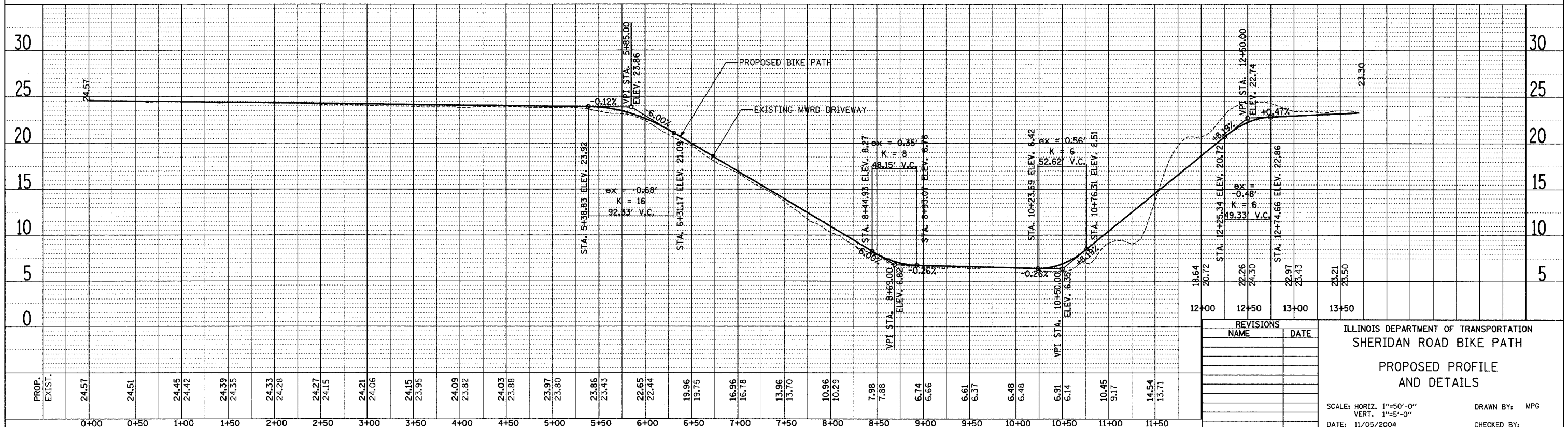


FOLD DOWN BOLLARD
NOT TO SCALE



PLAN	SURVEYED	DATE
NOTE BOOK NO.	BY	
	BY	
	BY	
	BY	
	BY	
	BY	

PROFILE	SURVEYED	DATE
NOTE BOOK NO.	BY	
	BY	
	BY	
	BY	
	BY	
	BY	



REVISIONS	
NAME	DATE

ILLINOIS DEPARTMENT OF TRANSPORTATION
SHERIDAN ROAD BIKE PATH
PROPOSED PROFILE
AND DETAILS

SCALE: HORIZ. 1"=50'-0"
VERT. 1"=5'-0"
DATE: 11/05/2004

DRAWN BY: MPG
CHECKED BY:

F.A.P. RTE.	SECTION	COUNTY	TOTAL SHEETS	SHEET NO.
	01-00177-00-BT	COOK	18	9
STA.	TO STA.			
FED. ROAD DIST. NO.	ILLINOIS	FED. AID PROJECT		
CONTRACT NO. 83780				



END PROJECT
STA 13+85.19

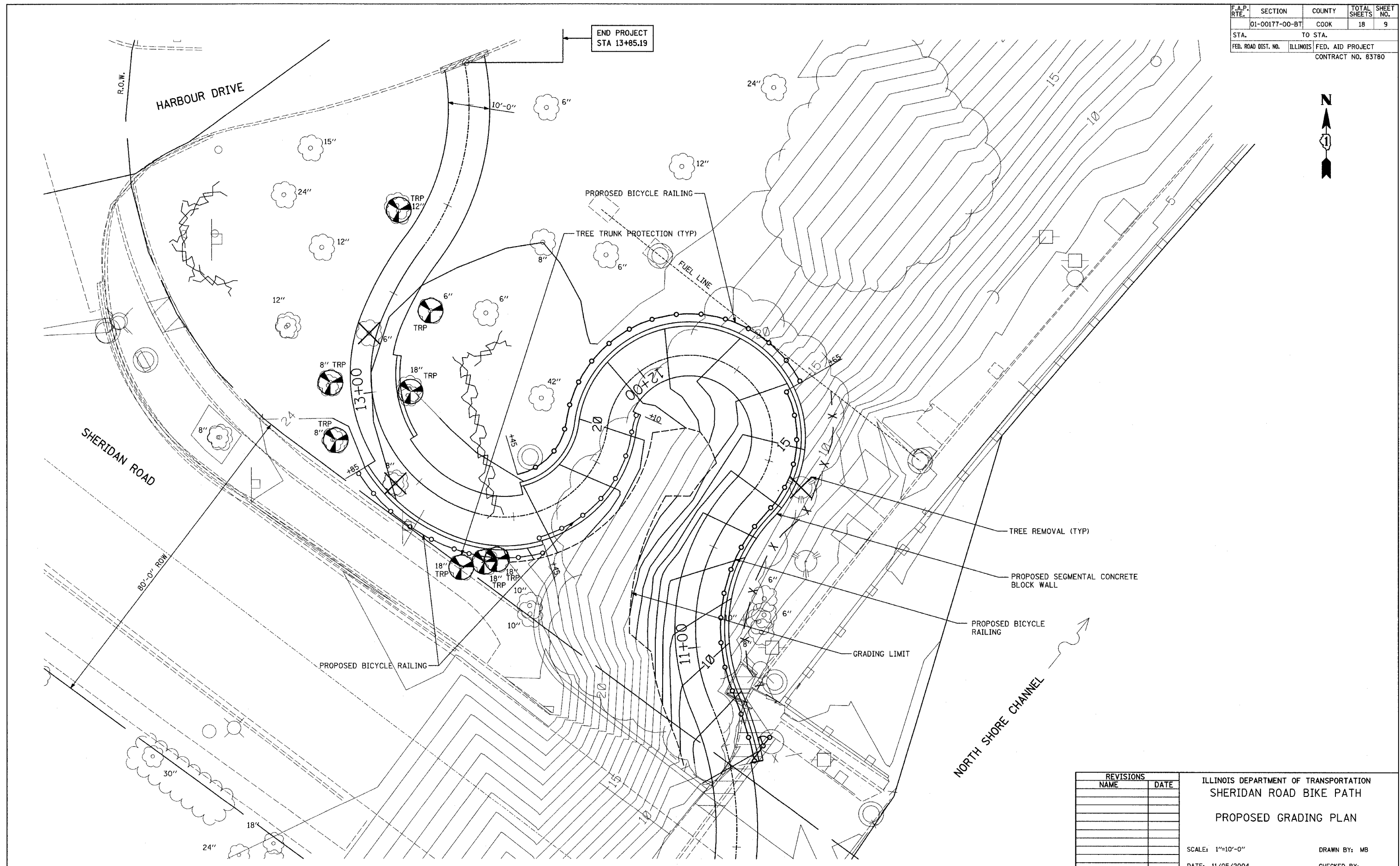
HARBOUR DRIVE

SHERIDAN ROAD

NORTH SHORE CHANNEL

PLAN	REVISIONS	DATE
NO.	BY	
	ALIGNED	
	CHECKED	
	PLOTTED	
	DATE	

PROFILE	REVISIONS	DATE
NO.	BY	
	GRADES	
	CHECKED	
	PLOTTED	
	DATE	



REVISIONS	
NAME	DATE

ILLINOIS DEPARTMENT OF TRANSPORTATION
SHERIDAN ROAD BIKE PATH
PROPOSED GRADING PLAN

SCALE: 1"=10'-0"
DATE: 11/05/2004

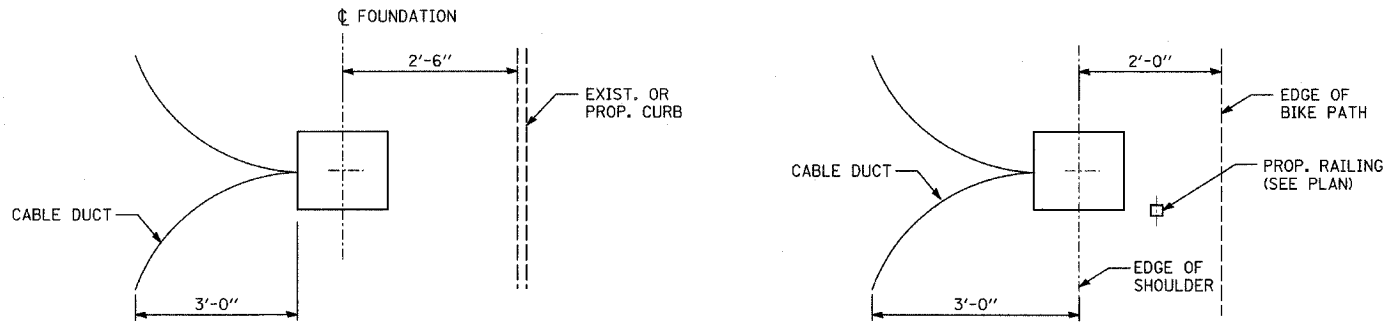
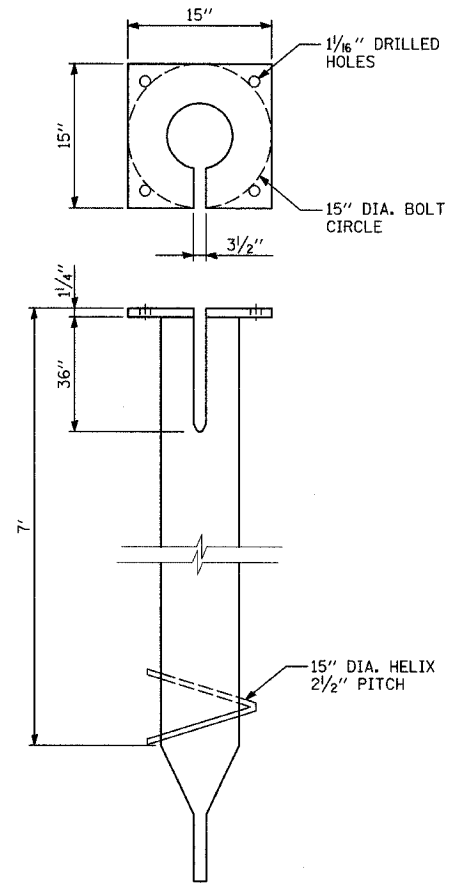
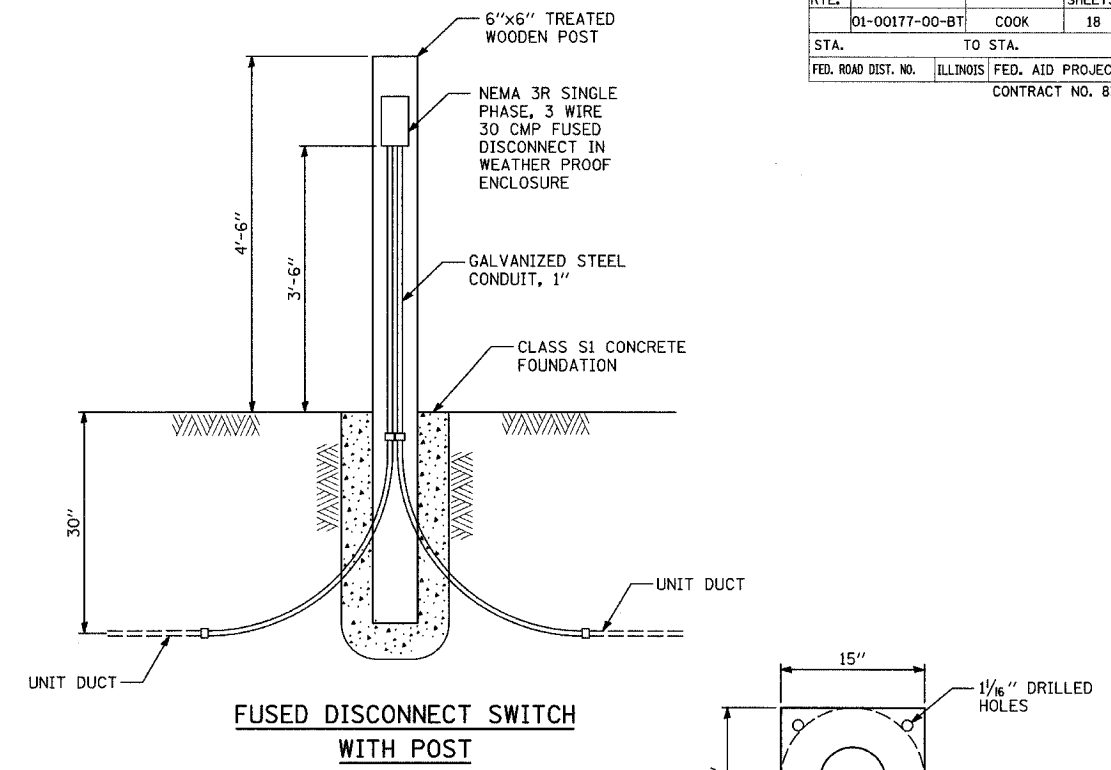
DRAWN BY: MB
CHECKED BY:

F.A.P. RTE.	SECTION	COUNTY	TOTAL SHEETS	SHEET NO.
01-00177-00-BT	COOK	ILLINOIS	18	11
STA.	TO STA.			
FED. ROAD DIST. NO.	ILLINOIS FED. AID PROJECT		CONTRACT NO. 83780	

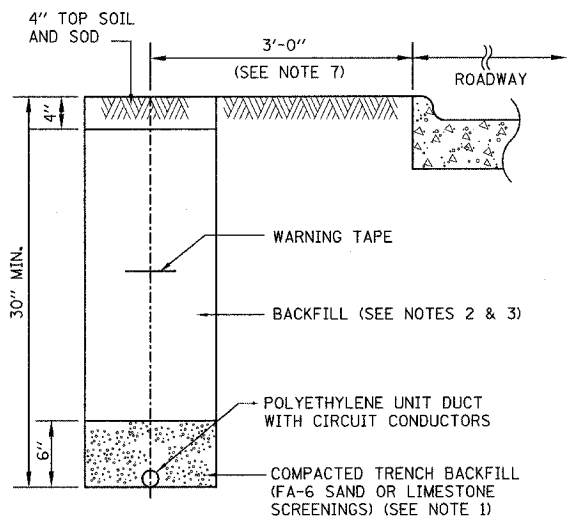
ELECTRICAL GENERAL NOTES:

- IT SHALL BE THE CONTRACTOR'S RESPONSIBILITY TO MARK THE PROPOSED LOCATIONS OF ALL LIGHT POLE FOUNDATIONS, CENTER LINE OF TRENCH AND PUSHES AND THE LIGHTING CONTROLLER FOR EXAMINATION AND CONFIRMATION WITH THE ENGINEER AT THE PRECONSTRUCTION INSPECTION. THE EXACT LOCATIONS OF ALL ITEMS SHALL BE CONFIRMED WITH THE ENGINEER PRIOR TO STARTING WORK.
- THE CONTRACTOR SHALL MAKE SPECIAL NOTE OF THE REQUIREMENTS FOR GROUNDING. GROUNDING CONNECTIONS AT THE FOUNDATION SHALL BE EXOTHERMICALLY WELDED, AS SPECIFIED, AND SHALL BE INSPECTED AND APPROVED BY THE RESIDENT ENGINEER PRIOR TO POURING CONCRETE OR BACKFILLING, AS APPLICABLE.
- THE CONTRACTOR SHALL MAKE SPECIAL NOTE OF THE SPECIFIED REQUIREMENTS FOR BURIED WARNING TAPE, SPECIFIED AS PART OF "TRENCH AND BACKFILL FOR ROADWAY LIGHTING". THE INSTALLATION OF THE TAPE SHALL BE INSPECTED BY THE ENGINEER PRIOR TO BACKFILLING OR DURING PLOWING OPERATIONS, AS APPLICABLE.
- THE CONTRACTOR SHALL BE RESPONSIBLE FOR THE ESTABLISHMENT OF FINISHED GRADE. THE ENGINEER MAY ASSIST THE CONTRACTOR, AS APPLICABLE, BUT THE RESPONSIBILITY FOR COORDINATING THE FINISHED GRADE ELEVATION WITH THE TOP OF THE FOUNDATION HEIGHTS AND THE LIKE SHALL REMAIN WITH THE CONTRACTOR.
- NO EQUIPMENT OR MATERIAL SHALL BE DELIVERED TO THE JOB SITE PRIOR TO THE APPROVAL AND INSPECTION BY THE ENGINEER. ANY EQUIPMENT OR MATERIAL DELIVERED TO THE JOB SITE PRIOR TO APPROVAL AND INSPECTION SHALL BE REMOVED FROM THE JOB SITE AT THE CONTRACTOR'S EXPENSE.
- CONDUIT PUSHED AND IN TRENCH SHALL EXTEND FIVE (5) FEET BEYOND THE SHOULDER, CURB OR DRIVEWAY, AS APPLICABLE.
- THE CONTRACTOR SHALL PROVIDE A 5/8" X 8' COPPER CLAD GROUND ROD AT EACH LIGHT POLE AND DISCONNECT SWITCH LOCATION.
- THE UNIT DUCT AND CONDUIT SHALL BE INSTALLED MIN. 30 INCHES BELOW FINISHED GRADE (UNLESS DIRECTED OTHERWISE) COMPLETE WITH WARNING TAPE. CONTRACTOR SHALL HAND DIG TEST HOLES FOR EVERY 1000 FT. OF TRENCHING/PLOWING FOR ENGINEER'S APPROVAL OF THE INSTALLATION.
- MATERIALS AND INSTALLATION METHODS SHALL COMPLY WITH CODES AND ORDINANCES OF FEDERAL, STATE AND LOCAL GOVERNING BODIES HAVING JURISDICTION. NATIONAL ELECTRICAL CODE (LATEST REVISION) SHALL BE CONSIDERED AS A MINIMUM REQUIREMENT.
- IT IS CONTRACTOR'S RESPONSIBILITY TO COORDINATE THE LOCATION OF EXISTING UNDERGROUND UTILITIES PRIOR TO THE START OF CONSTRUCTION. CONTACT J.U.L.I.E. PRIOR TO THE START OF ANY EXCAVATION WORK.

- FOR LOCATION OF EXISTING UNDERGROUND MUNICIPAL UTILITIES CALL THE VILLAGE OF WILMETTE.
- MATERIAL QUANTITIES ARE APPROXIMATIONS ONLY. IT IS CONTRACTOR'S RESPONSIBILITY TO FIELD VERIFY ALL QUANTITIES PRIOR TO ORDERING MATERIAL.
- ALL PROPOSED LIGHT POLE FOUNDATIONS, DISCONNECT SWITCHES, UNIT DUCT, AND CONDUIT SHALL BE INSTALLED AS SHOWN ON THE PLANS. THE EXACT LOCATION IS TO BE CONFIRMED IN THE FIELD BY THE RESIDENT ENGINEER.
- CONTRACTOR SHALL SUBMIT "RECORD DRAWINGS" A MINIMUM OF 7 DAYS PRIOR TO THE FINAL INSPECTION. "RECORD DRAWINGS" SHALL BE UPDATED REGULARLY DURING CONSTRUCTION AND INDICATE ALL LIGHTING MATERIAL INSTALLATION WITH ANY CHANGES IN RED.
- ALL AREAS DISTURBED UNDER THIS CONTRACT SHALL BE RESTORED TO ORIGINAL CONDITION OR BETTER, TO THE SATISFACTION OF ENGINEER.
- THE VILLAGE OF WILMETTE PUBLIC WORKS ELECTRIC DIVISION WILL MAKE ALL FINAL CONNECTIONS TO SYSTEM AND INSTALL/CONNECT ALL LIGHTING UNITS.
- THE CONTRACTOR MUST HAVE A QUALIFIED ELECTRICIAN ON SITE WHEN CIRCUITS ARE ENERGIZED BY THE VILLAGE OF WILMETTE.
- THE VILLAGE OF WILMETTE WILL FURNISH THE METAL HELIX FOUNDATIONS FOR CONTRACTOR INSTALLATION. CONTACT VILLAGE DEPARTMENT OF PUBLIC WORK TWO (2) WEEKS PRIOR TO INSTALLATION FOR DELIVERY COORDINATION.
- QUANTITY OF PUSHED CONDUIT AND CONDUIT IN TRENCH ARE APPROXIMATE ONLY. CONTRACTOR SHALL FIELD VERIFY THE QUANTITIES PRIOR TO ORDERING THE MATERIAL AND INSTALL CONDUITS IN FULL COMPLIANCE WITH THE DETAILS AND SPECIFICATIONS SET REQUIREMENTS.
- IT SHALL BE THE RESPONSIBILITY OF THE CONTRACTOR TO LOCATE, FLAG AND PROTECT ALL EXISTING UNDERGROUND UTILITIES PRIOR TO AND DURING CONSTRUCTION. ANY DAMAGE TO EXISTING UTILITIES DURING CONSTRUCTION SHALL BE REPAIRED IMMEDIATELY AT NO EXTRA COST TO THE VILLAGE. THIS WORK SHALL NOT BE PAID FOR SEPARATELY BUT SHALL BE CONSIDERED INCIDENTAL TO THE INSTALLATION OF THE PROPOSED CABLE IN UNIT DUCT. REFER TO CIVIL PLAN SHEETS FOR LOCATIONS OF EXISTING UNDERGROUND UTILITIES. ALL EXISTING UNDERGROUND UTILITIES NOT SHOWN ON THE LIGHTING PLAN SHEETS FOR SAKE OF CLARITY.
- UNLESS OTHERWISE INDICATED, ALL ITEMS AND WORK SHOWN ON THESE PLANS ARE PROPOSED NEW ITEMS OF WORK.



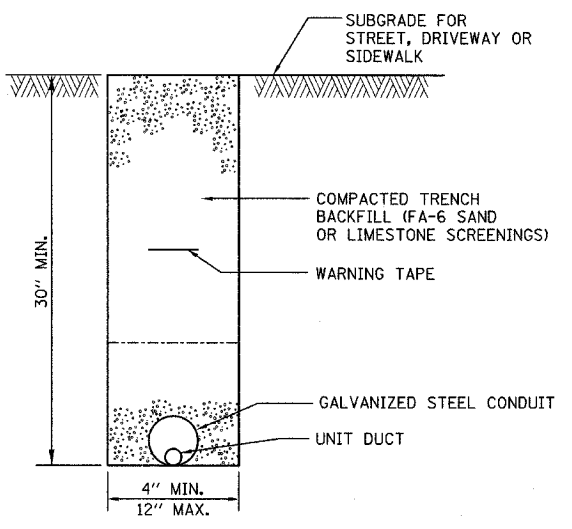
TYPICAL POLE FOUNDATION PLAN



TYPICAL UNIT DUCT TRENCH DETAIL (ALONG ROADWAY)

NOTES:

- UNIT DUCT INSTALLED IN TRENCHES SHALL BE COVERED WITH A MINIMUM OF 6" OF COMPACTED FA-6 OR LIMESTONE SCREENINGS.
- IN GRASSY AREAS, THE BACKFILL MAY BE COMPACTED EARTH.
- TRENCHES WITHIN 2' OF PROPOSED OR EXISTING STREETS, DRIVEWAYS, OR SIDEWALKS SHALL BE BACKFILLED WITH COMPACTED FA-6 SAND OR LIMESTONE SCREENINGS.
- WHERE 2 OR MORE UNIT DUCTS RUN ADJACENT TO EACH OTHER, THEY SHALL BE PLACED IN A COMMON TRENCH SO AS NOT TO CROSS EACH OTHER.
- 6" WIDE REINFORCED METALLIC WARNING TAPE, RED WITH BLACK LETTERING TO READ "CAUTION-ELECTRICAL LINE BURIED BELOW". WARNING TAPE TO BE PLACED 1' MINIMUM TO 2' MAXIMUM BELOW FINISHED GRADE.
- ALL GRASSY AREAS DISTURBED DURING CONSTRUCTION SHALL BE RESTORED WITH 4" OF TOPSOIL AND SOD.
- EXACT DISTANCE SHALL BE FIELD COORDINATED.



TYPICAL CONDUIT TRENCH DETAIL (UNDER PAVEMENT)

NOTES:

- CONDUIT SHALL BE HOT DIP GALVANIZED STEEL, A MINIMUM OF 4" IN DIAMETER.
- CONDUIT SHALL EXTEND A MINIMUM OF 5' BEYOND THE STREET, DRIVEWAY, OR SIDEWALK.
- CONDUIT SHALL HAVE BOTH ENDS CAPPED UNTIL USED.
- WHEN PLACED INTO SERVICE, CONDUIT SHALL BE PROVIDED WITH AN INSULATED FIBER BUSHING, AND SEALED WITH A WORKABLE SOFT PLASTIC SEALING COMPOUND AT EACH END.
- 6" WIDE REINFORCED METALLIC WARNING TAPE, RED WITH BLACK LETTERING TO READ "CAUTION-ELECTRICAL LINE BURIED BELOW". WARNING TAPE TO BE PLACED 1' MINIMUM TO 2' MAXIMUM BELOW FINISHED GRADE.
- ALL GRASSY AREAS DISTURBED DURING CONSTRUCTION SHALL BE RESTORED WITH 4" OF TOPSOIL AND SOD.

REVISIONS	
NAME	DATE

ILLINOIS DEPARTMENT OF TRANSPORTATION
 SHERIDAN ROAD BIKE PATH
 ELECTRICAL GENERAL NOTES
 AND DETAILS

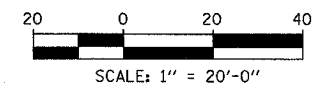
SCALE: NONE
 DATE: 11/05/2004

DRAWN BY: MB
 CHECKED BY:

DATE	
BY	
PLAN	
NO.	
REVISIONS	
NO.	
DATE	
BY	
PLAN	
NO.	
REVISIONS	
NO.	
DATE	
BY	
PLAN	
NO.	

DATE	
BY	
PROFILE	
NO.	
REVISIONS	
NO.	
DATE	
BY	
PROFILE	
NO.	
REVISIONS	
NO.	
DATE	
BY	
PROFILE	
NO.	

F.A.P. RTE.	SECTION	COUNTY	TOTAL SHEETS	SHEET NO.
	01-00177-00-BT	COOK	18	12
STA.	6+00	TO STA.	13+85.19	
FED. ROAD DIST. NO.	ILLINOIS	FED. AID PROJECT	CONTRACT NO. 83780	



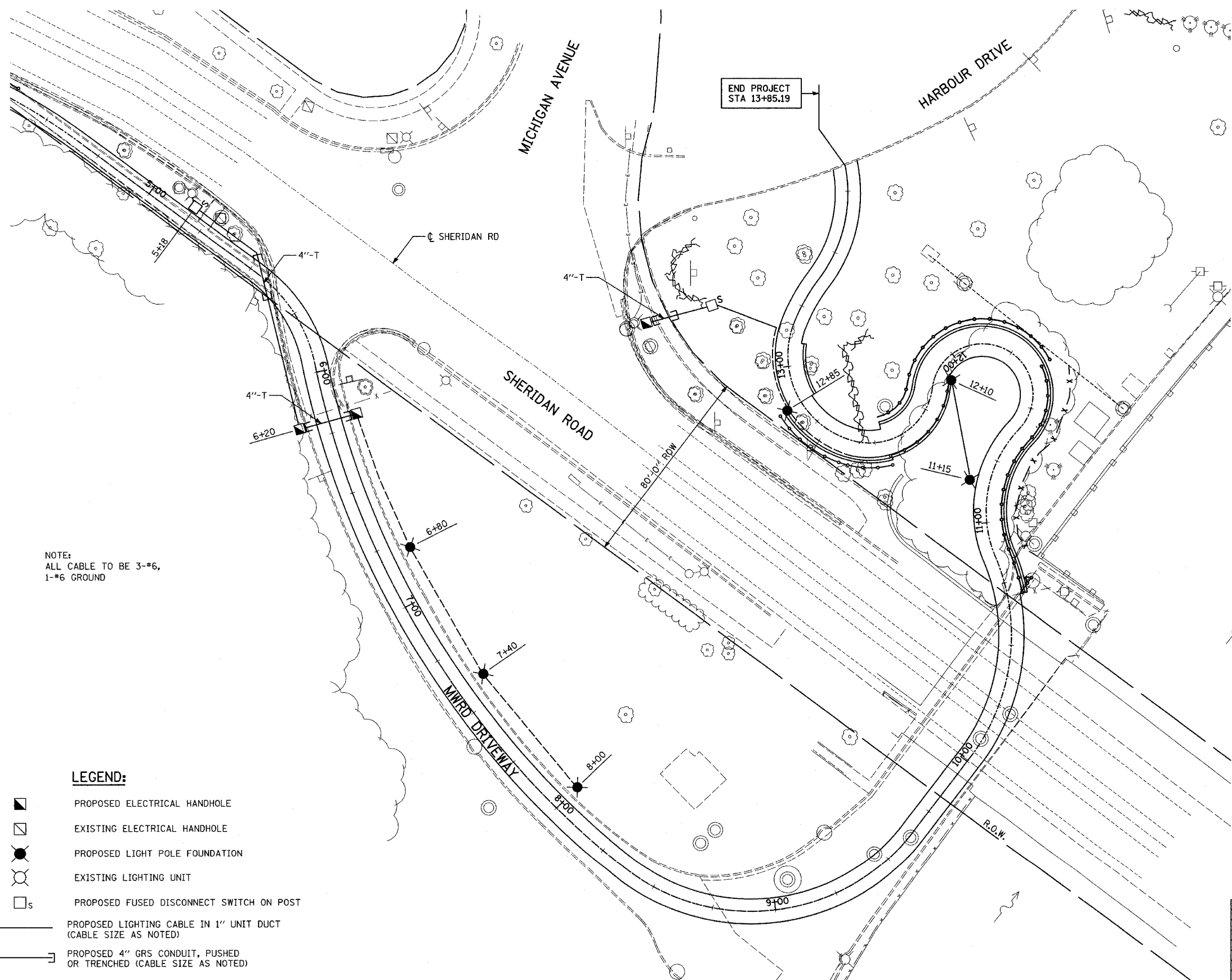
REVISIONS	
NAME	DATE

ILLINOIS DEPARTMENT OF TRANSPORTATION
SHERIDAN ROAD BIKE PATH
ELECTRICAL PLAN
 SCALE: 1"=20'-0"
 DATE: 11/05/2004
 DRAWN BY: MPG
 CHECKED BY:

NOTE:
 ALL CABLE TO BE 3-#6,
 1-#6 GROUND

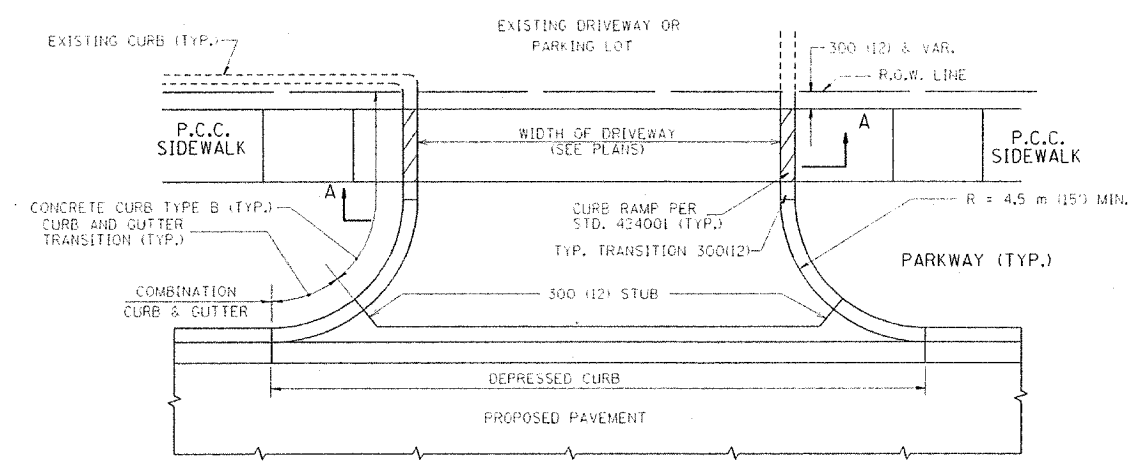
LEGEND:

- PROPOSED ELECTRICAL HANDHOLE
- EXISTING ELECTRICAL HANDHOLE
- PROPOSED LIGHT POLE FOUNDATION
- EXISTING LIGHTING UNIT
- PROPOSED FUSED DISCONNECT SWITCH ON POST
- PROPOSED LIGHTING CABLE IN 1" UNIT DUCT (CABLE SIZE AS NOTED)
- PROPOSED 4" GRS CONDUIT, PUSHED OR TRENCHED (CABLE SIZE AS NOTED)

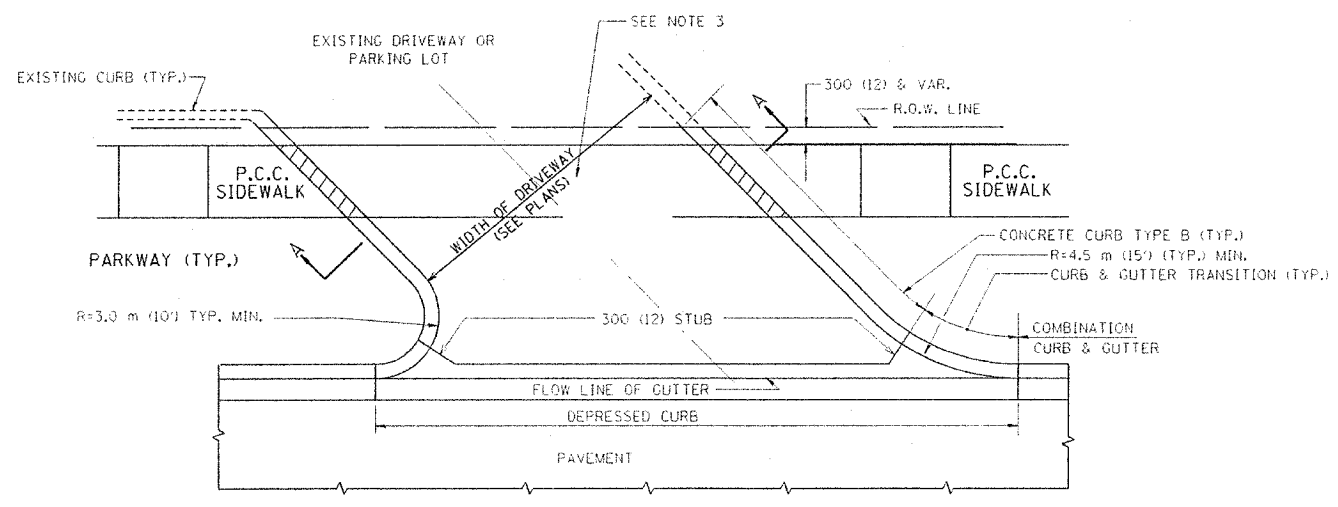


PLAN	DATE
NO.	
BY	
REVISIONS	
PLOTTED	
CHECKED	
ALIGNED	
NOTED	
FILE NAME	

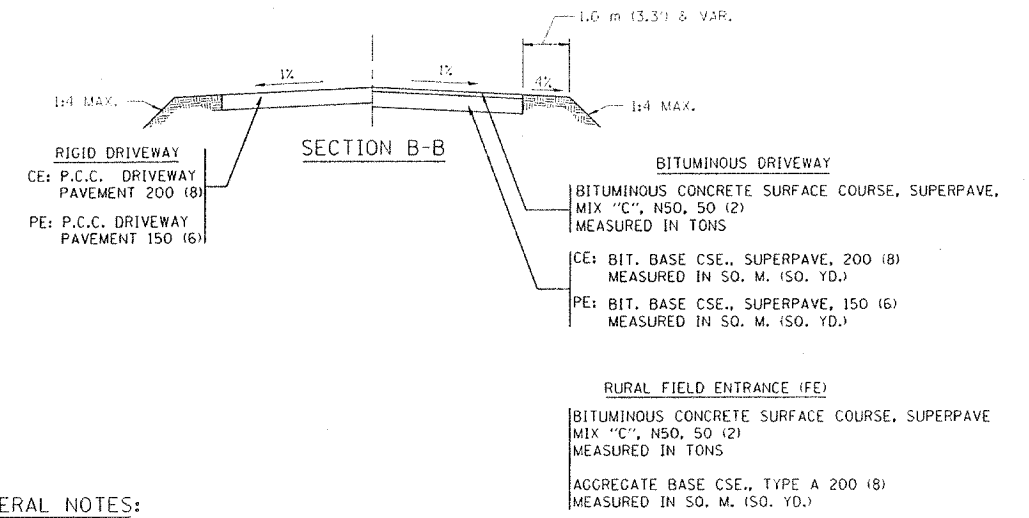
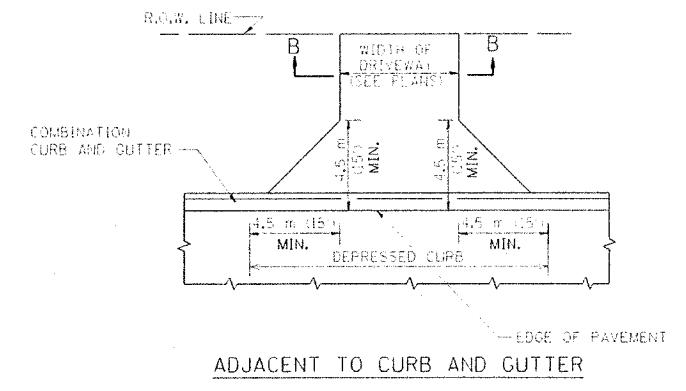
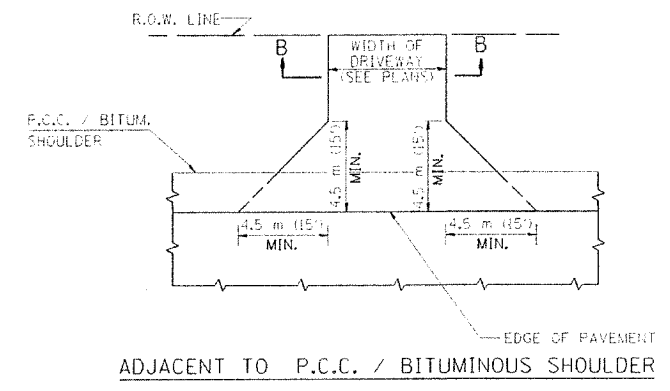
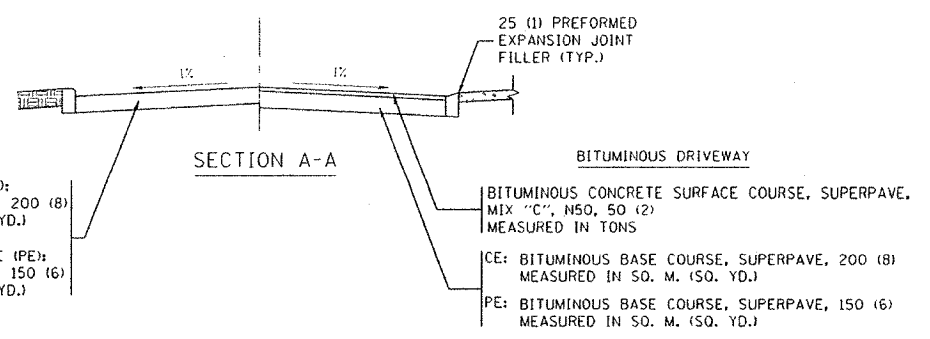
PROFILE	DATE
NO.	
BY	
REVISIONS	
PLOTTED	
CHECKED	
ALIGNED	
NOTED	
FILE NAME	



WITH CONCRETE CURB, TYPE B



WITH CONCRETE CURB, TYPE B



GENERAL NOTES:

DRIVEWAY SLOPES, LOCATIONS, & GEOMETRIC LAYOUT SHALL BE IN ACCORDANCE WITH THE LATEST EDITION OF THE "HANDBOOK FOR POLICY ON PERMITS FOR ACCESS DRIVEWAYS TO STATE HIGHWAYS". FOR FURTHER LAYOUT REQUIREMENTS, REFER TO ILLUSTRATIONS IN THE PERMIT HANDBOOK. DRIVEWAYS SHALL BE REPLACED IN KIND, UNLESS OTHERWISE NOTED ON THE PLANS.

COMMERCIAL DRIVEWAYS SHALL BE CONSTRUCTED WITH CONCRETE CURB, TYPE B RETURNS EXCEPT WHEN THE SIDEWALK EDGE IS 1.2 METERS (4 FEET) OR LESS FROM THE BACK OF CURB, CONSTRUCT A FLARE DRIVEWAY WITHOUT CURB.

THE RESIDENT ENGINEER SHALL CONTACT THE TRAFFIC PERMIT OFFICE AT 847/ 705-4131 FOR ANY QUESTIONS ON DRIVEWAYS SHOWN IN THE PLANS; SPECIFICALLY IN REFERENCE TO ADDITIONAL AND/OR RELOCATION/REMOVAL OF A DRIVEWAY.

COMBINATION CONCRETE CURB & GUTTER SHALL BE MEASURED STRAIGHT ACROSS THE DRIVEWAY. NO ADDITIONAL COMPENSATION WILL BE ALLOWED FOR THE CURB & GUTTER TRANSITION.

25 (1) PREFORMED EXPANSION JOINT FILLER WILL NOT BE PAID SEPARATELY, BUT SHALL BE CONSIDERED INCLUDED IN THE COST OF THE P.C.C. DRIVEWAY PAVEMENT OR P.C.C. SIDEWALK.

WHEN THE P.C.C. SIDEWALK EXTENDS THROUGH THE DRIVEWAY, THE THICKNESS OF THE SIDEWALK IN THE DRIVEWAY AREA SHALL BE THE SAME AS THE DRIVEWAY THICKNESS. SIDEWALK WILL BE PAID FOR AS P.C.C. SIDEWALK OF THE THICKNESS SPECIFIED. SIDEWALK CROSS SLOPE THRU DRIVEWAY AREA TO BE A MAXIMUM OF 1:50.

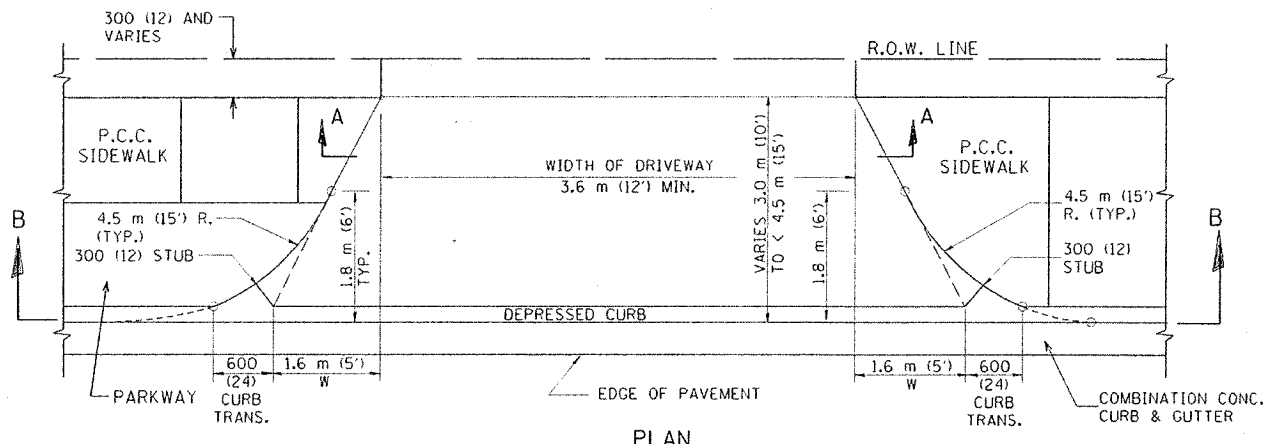
ALL DIMENSIONS ARE IN MILLIMETERS (INCHES) UNLESS OTHERWISE NOTED

ILLINOIS DEPARTMENT OF TRANSPORTATION
DRIVEWAY DETAILS
 DISTANCE BETWEEN R.O.W. AND FACE OF CURB / EDGE OF SHOULDER >= 4.5 m (15')

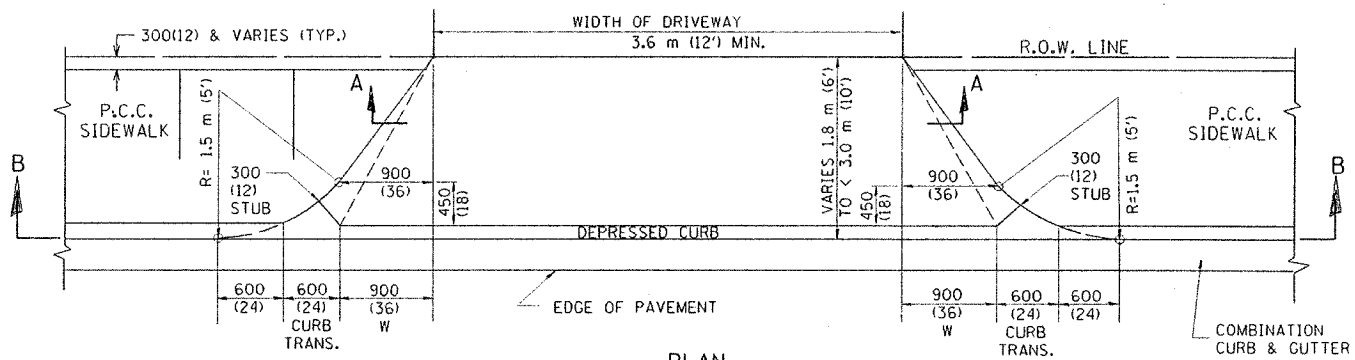
REVISIONS	
NAME	DATE
P. LOFLEUR	04-15-03
R. SHAH	11-04-95
J. POLLASTRINI	08-12-96
J. POLLASTRINI	12-14-96
A. ABBAS	03-21-97
T. HOLTZ	04-08-97
M. GOMEZ	04-06-01

SCALE: NONE
 DATE PLOTTED: 04/17/2003
 DRAWN BY: SG
 CHECKED BY: JFP

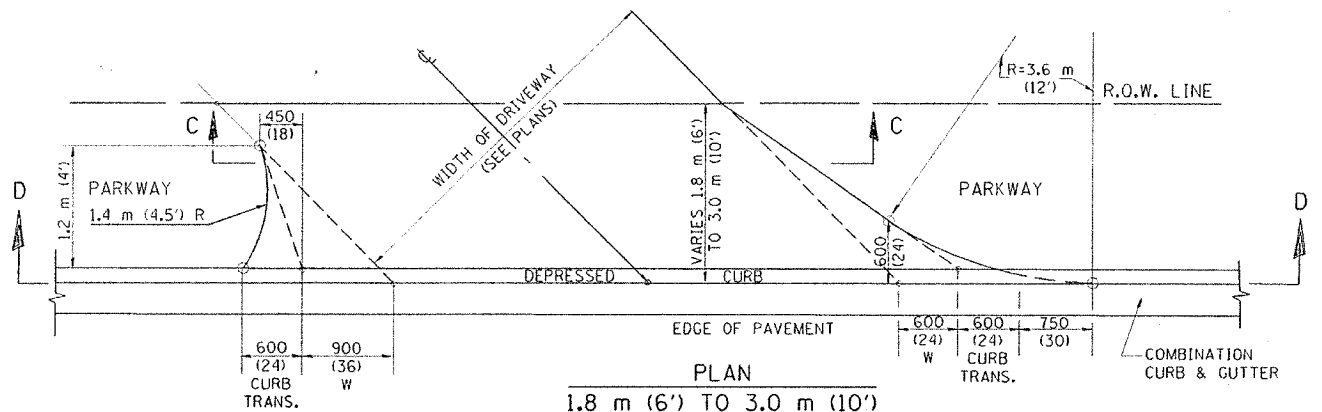
F.A. NO.	SECTION	COUNTY	TOTAL SHEETS	SHEET NO.
01-00177-00-BT	COOK	18	14	
STA. 6+00	TO STA. 13+85.19			
FED. ROAD DIST. NO. 1	RELIEF	FED. AID PROJECT		
Contract No. 83780				



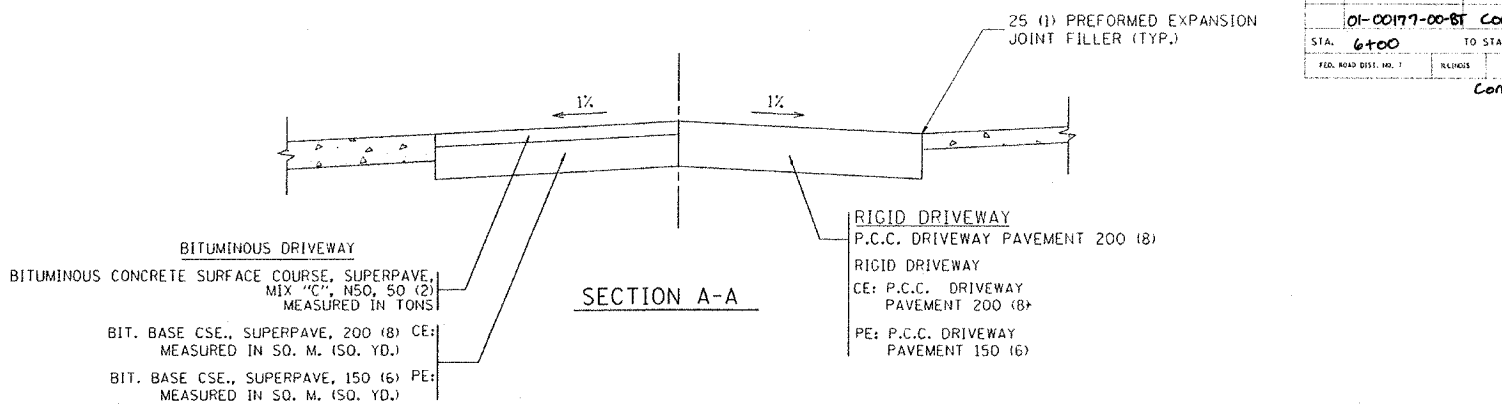
PLAN
3.0 m (10') TO < 4.5 m (15')



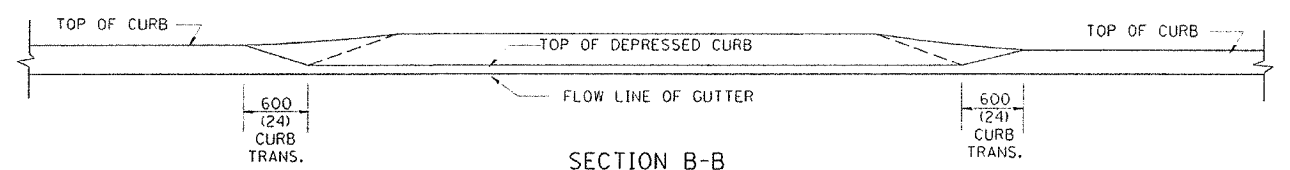
PLAN
1.8 m (6') < 3.0 m (10')



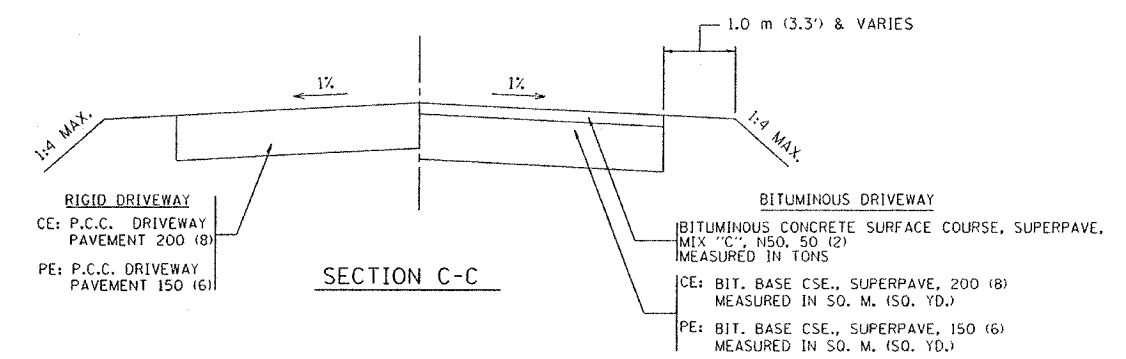
PLAN
1.8 m (6') TO 3.0 m (10')



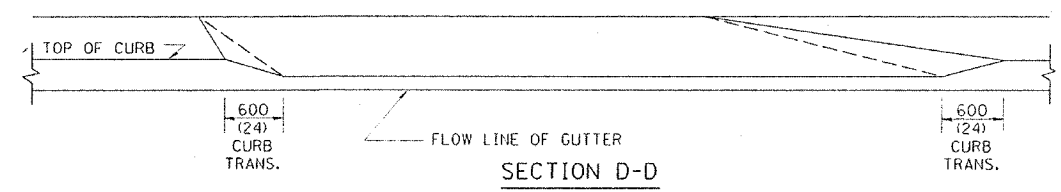
SECTION A-A



SECTION B-B



SECTION C-C



SECTION D-D

GENERAL NOTES

DRIVEWAY SLOPES, LOCATIONS, & GEOMETRIC LAYOUT SHALL BE IN ACCORDANCE WITH THE LATEST EDITION OF THE "HANDBOOK FOR POLICY ON PERMITS FOR ACCESS DRIVEWAYS TO STATE HIGHWAYS". FOR FURTHER LAYOUT REQUIREMENTS, REFER TO ILLUSTRATIONS 10 IN THE PERMIT HANDBOOK. WHERE SIDEWALKS EXIST, DRIVEWAYS SHALL BE REPLACED WITH RIGID PAVEMENT. WHERE NO SIDEWALKS EXIST, DRIVEWAYS SHALL BE REPLACED IN KIND. SIDEWALK CROSS SLOPE THRU DRIVEWAY AREA TO BE A MAXIMUM OF 1:50.

WHEN THE DISTANCE BETWEEN R.O.W. AND THE BACK OF CURB IS EQUAL TO OR LESS THAN 2.4 M (8'), THE P.C.C. SIDEWALK SHALL EXTEND TO THE BACK OF CURB.

THE RESIDENT ENGINEER SHALL CONTACT THE TRAFFIC PERMIT OFFICE AT 847/705-4131 FOR ANY QUESTIONS ON DRIVEWAYS SHOWN IN THE PLANS; SPECIFICALLY IN REFERENCE TO ADDITIONAL AND/OR RELOCATION/REMOVAL OF A DRIVEWAY.

COMBINATION CONCRETE CURB & GUTTER SHALL BE MEASURED STRAIGHT ACROSS THE DRIVEWAY. NO ADDITIONAL COMPENSATION WILL BE ALLOWED FOR THE CURB & GUTTER TRANSITION.

25 (1) PREFORMED EXPANSION JOINT FILLER WILL NOT BE PAID SEPARATELY, BUT SHALL BE CONSIDERED INCLUDED IN THE COST OF THE P.C.C. DRIVEWAY PAVEMENT OR P.C.C. SIDEWALK.

"W" VARIES FROM 900 (36) TO 1.5 m (5 FT.) PROPORTIONAL TO THE LENGTH (L), FROM 1.8 m (6 FT.) TO 3 m (10 FT.).

ALL DIMENSIONS ARE IN MILLIMETERS (INCHES) UNLESS OTHERWISE NOTED.

ILLINOIS DEPARTMENT OF TRANSPORTATION

DRIVEWAY DETAILS

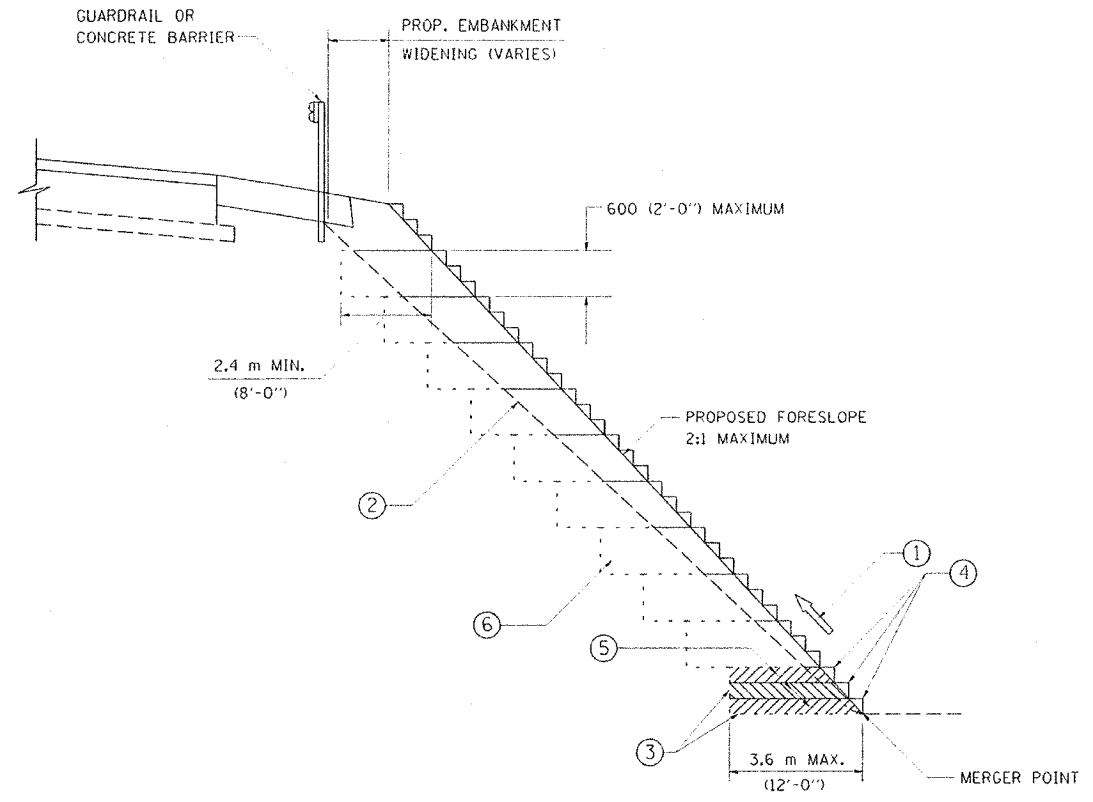
DISTANCE BETWEEN ROW AND FACE OF CURB < 4.5 m (15')

REVISIONS	
NAME	DATE
P. LGFLEUR	04/15/03
M. GOMEZ	04/06/01
R. SHAH	11/06/95
J. POLLASTRINI	08/12/96
J. POLLASTRINI	12/14/96
A. ABBAS	03/21/97
T. HOLTZ	04/08/97

SCALE: NONE
DATE PLOTTED: 04/17/2003

DRAWN BY: SC
CHECKED BY: JFP

B0400-02 (BD-02)
REVISION DATE: 04/15/03



TYPICAL BENCHING DETAIL
FOR EMBANKMENT

NOTES:

- ① CONSTRUCT SUCCEEDING BENCH CUTS AND EMBANKMENT PLACEMENT AND COMPACTION FROM BOTTOM TO TOP IN STAIRSTEP FASHION.
- ② EXISTING FORESLOPE PREPARED IN ACCORDANCE WITH ARTICLE 205.04 OF THE STANDARD SPECIFICATIONS.
- ③ BENCH CUT EXISTING SLOPE TYPICAL FOR EACH STEP.
- ④ TRIM TO FINAL SLOPE.
- ⑤ EQUAL 200 (8-INCH) LIFTS OF EMBANKMENT COMPACTED IN ACCORDANCE WITH ARTICLE 205.06 OF THE STANDARD SPECIFICATIONS.
- ⑥ EXCAVATION OF BENCH CUTS WITHIN EXISTING EMBANKMENT WILL BE PAID FOR AT THE CONTRACT UNIT PRICE PER CUBIC METER OR CUBIC YARD FOR "EARTH EXCAVATION (SPECIAL)". THIS PRICE WILL INCLUDE ALL LABOR AND MATERIAL NO ADDITIONAL COMPENSATION WILL BE ALLOWED.

ALL DIMENSIONS ARE IN MILLIMETERS (INCHES) UNLESS OTHERWISE SHOWN.

ILLINOIS DEPARTMENT OF TRANSPORTATION

BENCHING DETAIL
FOR EMBANKMENT
WIDENING

SCALE: NONE
DATE: DATE

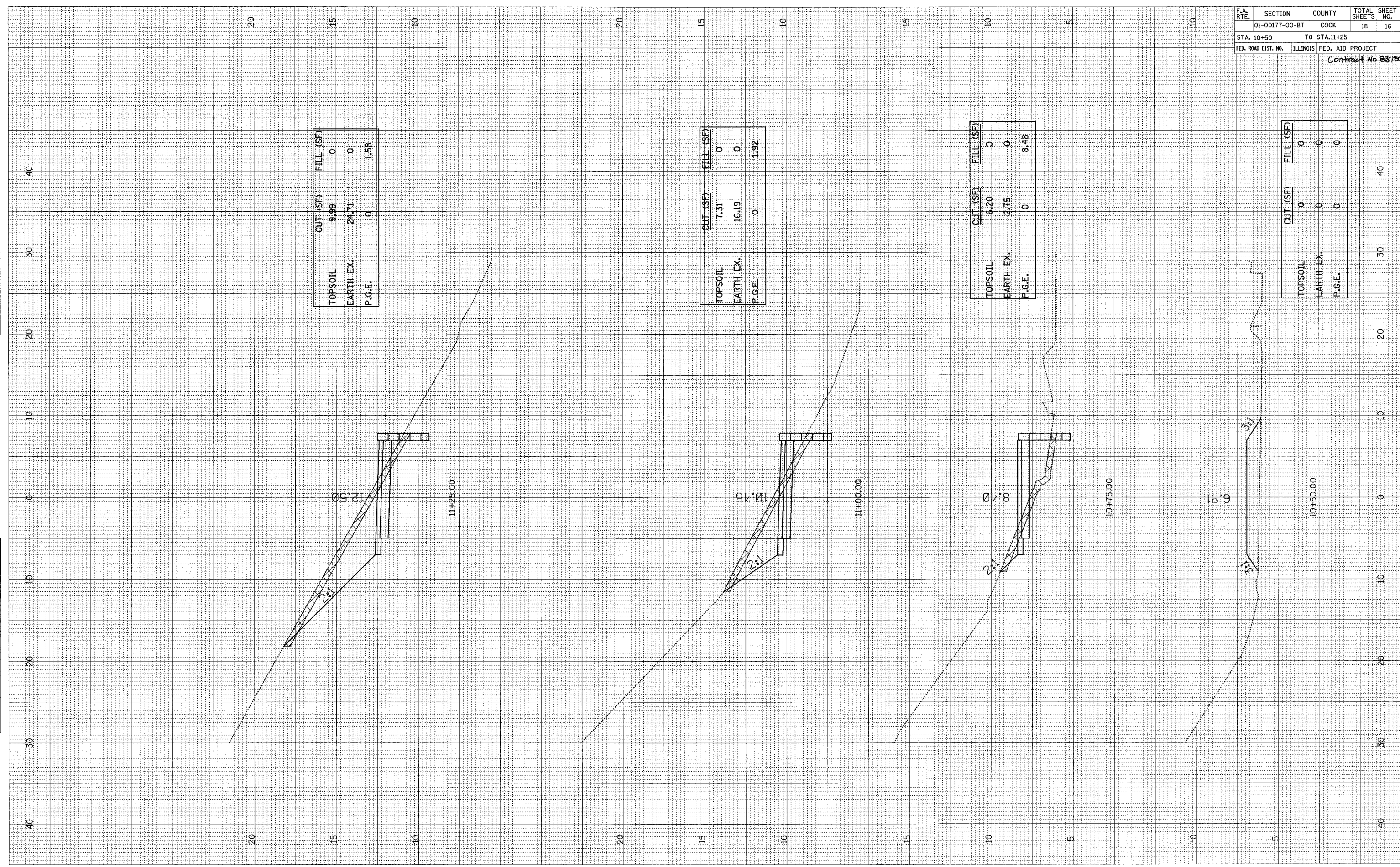
DRAWN BY: CADD
CHECKED BY: S.E.B.

REVISIONS	
NAME	DATE

F.A. RTE.	SECTION	COUNTY	TOTAL SHEETS	SHEET NO.
	01-00177-00-BT	COOK	18	16
STA. 10+50		TO STA. 11+25		
FED. ROAD DIST. NO.	ILLINOIS		FED. AID PROJECT	
Contract No. 88760				

FINAL SURVEY	BY	DATE
SURVEYED		
NOTED		
PLOTTED		
TEMPLATE		
AREAS		
CHECKED		

ORIGINAL SURVEY	BY	DATE
SURVEYED		
NOTED		
PLOTTED		
TEMPLATE		
AREAS		
CHECKED		

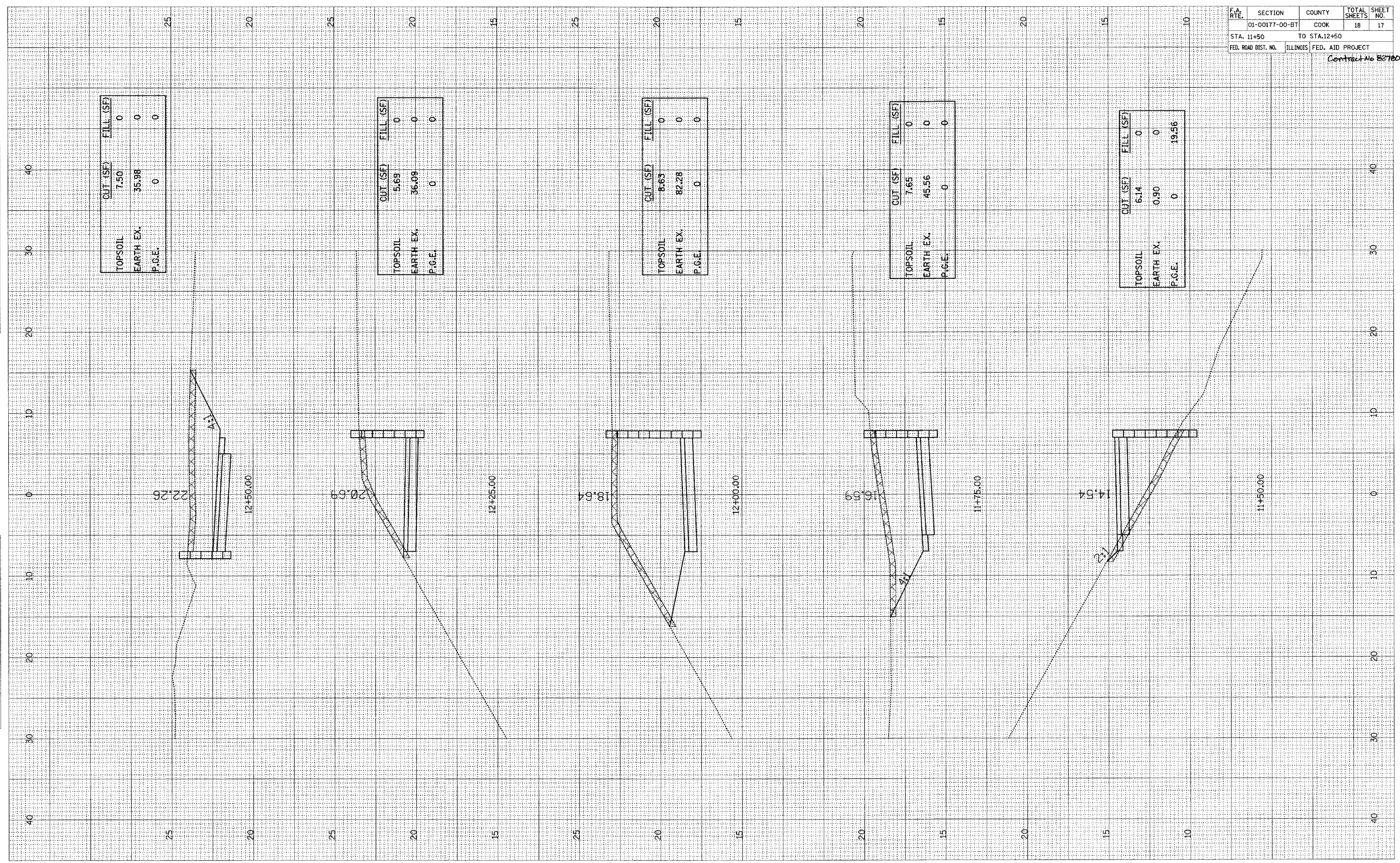


F.A. RTE.	SECTION	COUNTY	TOTAL SHEETS	SHEET NO.
	01-00177-00-BT	COOK	18	17
STA. 11+50		TO STA. 12+50		
FED. ROAD DIST. NO.	ILLINOIS	FED. AID PROJECT		

Contract No. 80700

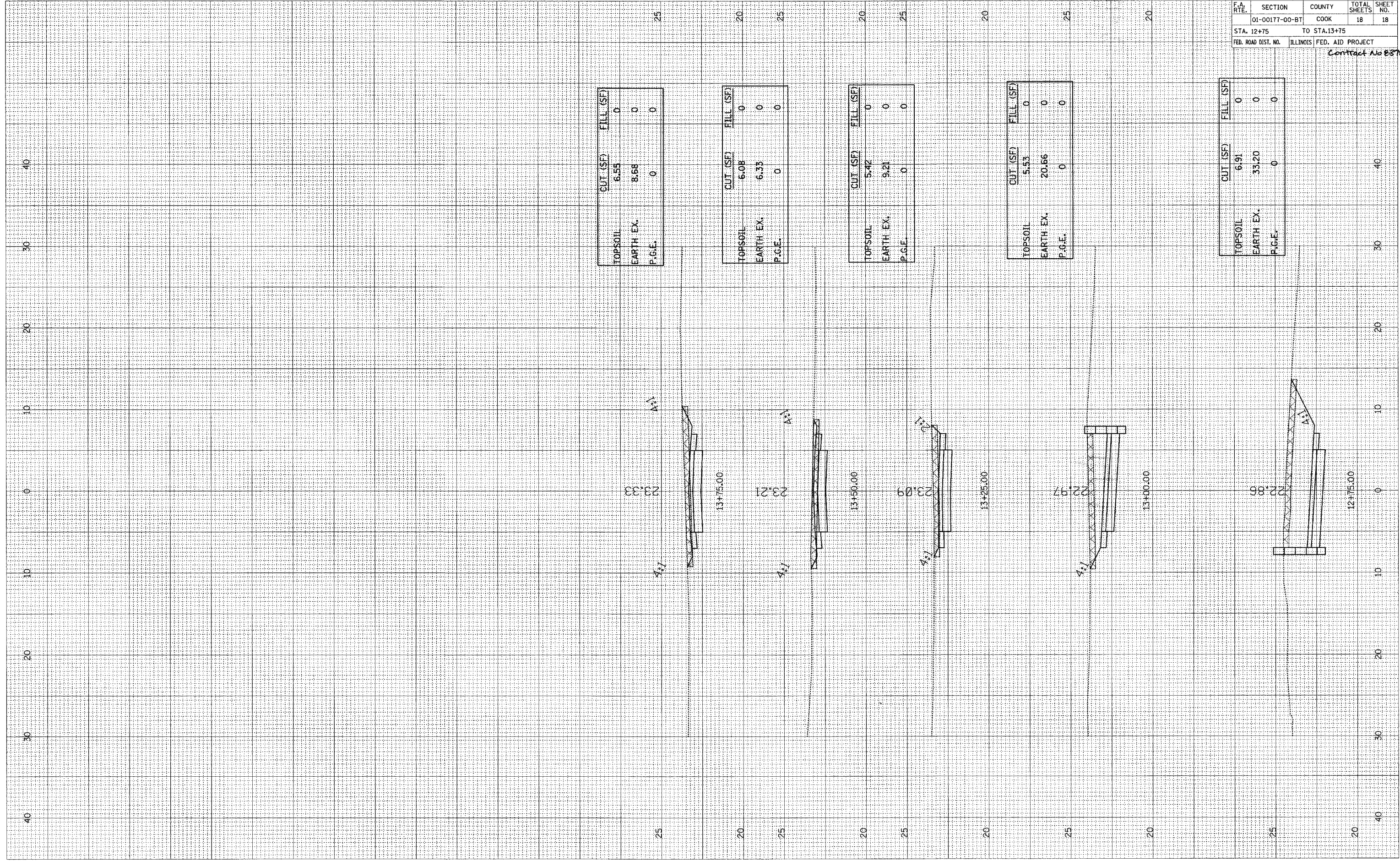
FINAL SURVEY BY DATE
 SURVEYED BY DATE
 PLOTTED BY DATE
 NOTE BOOK NO. _____
 AREAS CHECKED _____

ORIGINAL SURVEY BY DATE
 SURVEYED BY DATE
 PLOTTED BY DATE
 NOTE BOOK NO. _____
 AREAS CHECKED _____



FINAL SURVEY SURVEYED PLOTTED NOTE BOOK NO. BY DATE

ORIGINAL SURVEY SURVEYED PLOTTED NOTE BOOK NO. BY DATE



F.A. RTE.	SECTION	COUNTY	TOTAL SHEETS	SHEET NO.
	01-00177-00-BT	COOK	18	18
STA. 12+75		TO STA. 13+75		
FED. ROAD DIST. NO.	ILLINOIS FED. AID PROJECT			

Contract No B3780