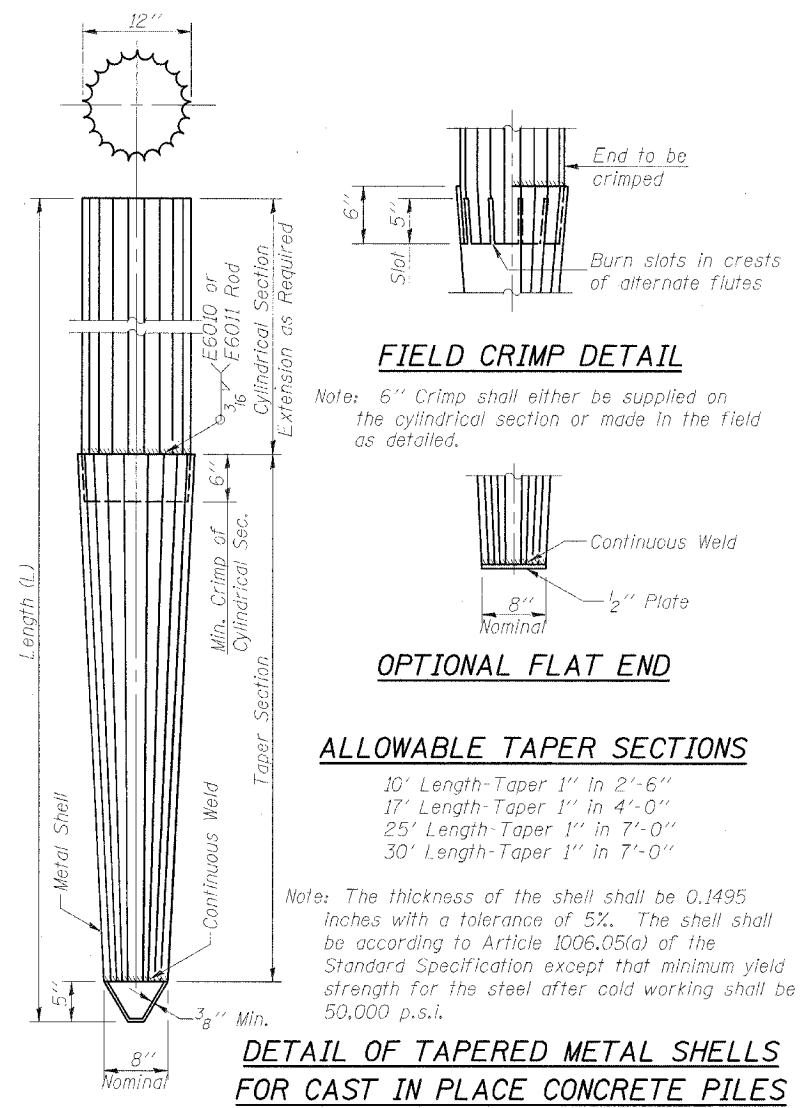


SECTION	COUNTY	TOTAL SHEETS	SHEET NO.
02-00325-00-BR	McLEAN	51	49
STA.	TO STA.		
FED. ROAD DIST. NO.	ILLINOIS	FED. AID PROJECT	

Sheet 9 of 11 87270

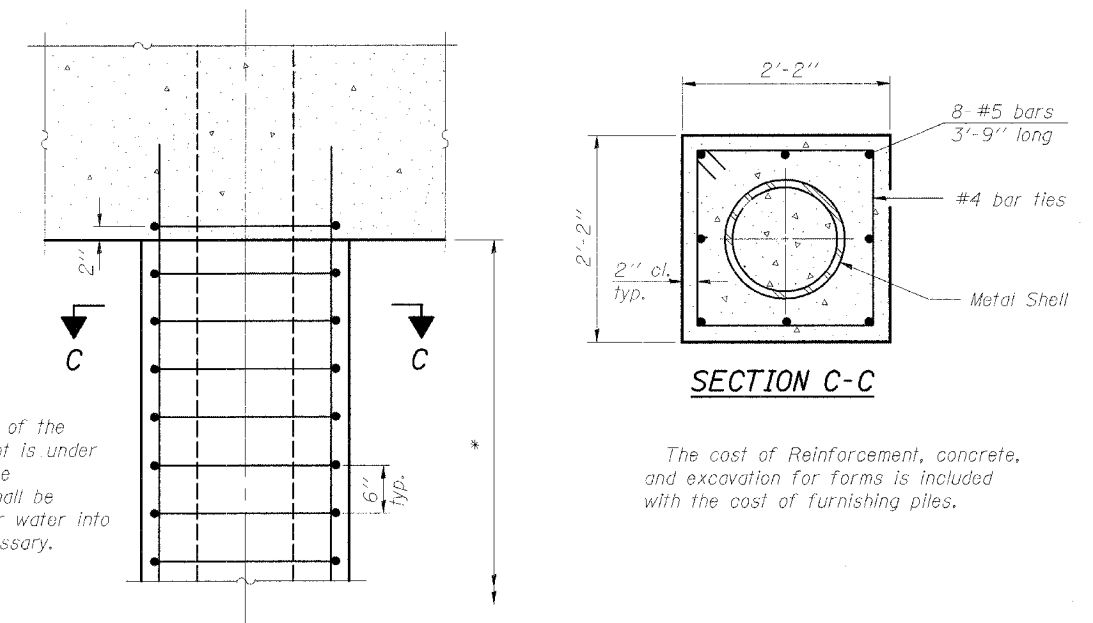


ALLOWABLE TAPER SECTIONS

- 10' Length-Taper 1" in 2'-6"
- 17' Length-Taper 1" in 4'-0"
- 25' Length-Taper 1" in 7'-0"
- 30' Length-Taper 1" in 7'-0"

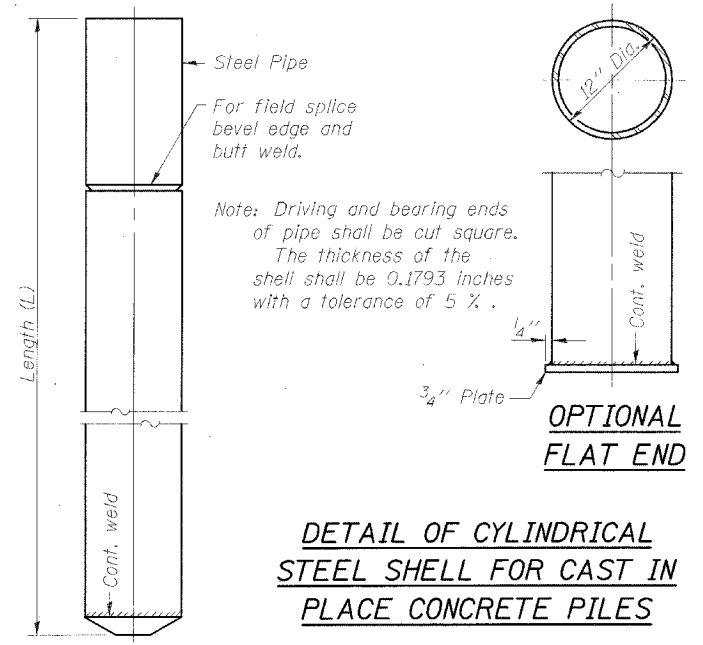
Note: The thickness of the shell shall be 0.1495 inches with a tolerance of 5%. The shell shall be according to Article 1006.05(a) of the Standard Specification except that minimum yield strength for the steel after cold working shall be 50,000 p.s.i.

DETAIL OF TAPERED METAL SHELLS FOR CAST IN PLACE CONCRETE PILES



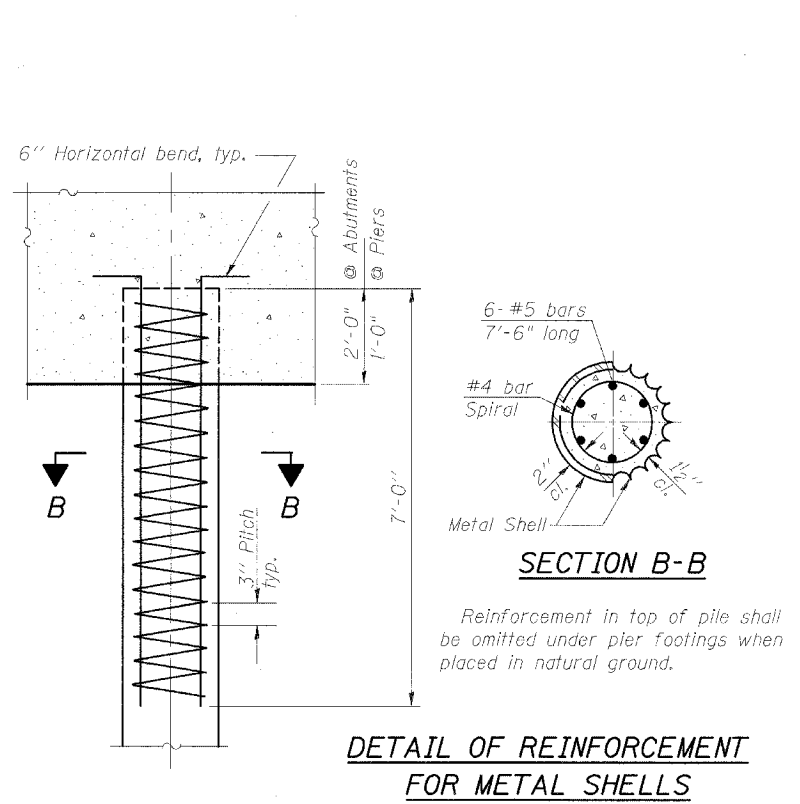
DETAIL OF PROTECTION FOR METAL SHELLS AT PIERS

The cost of Reinforcement, concrete, and excavation for forms is included with the cost of furnishing piles.

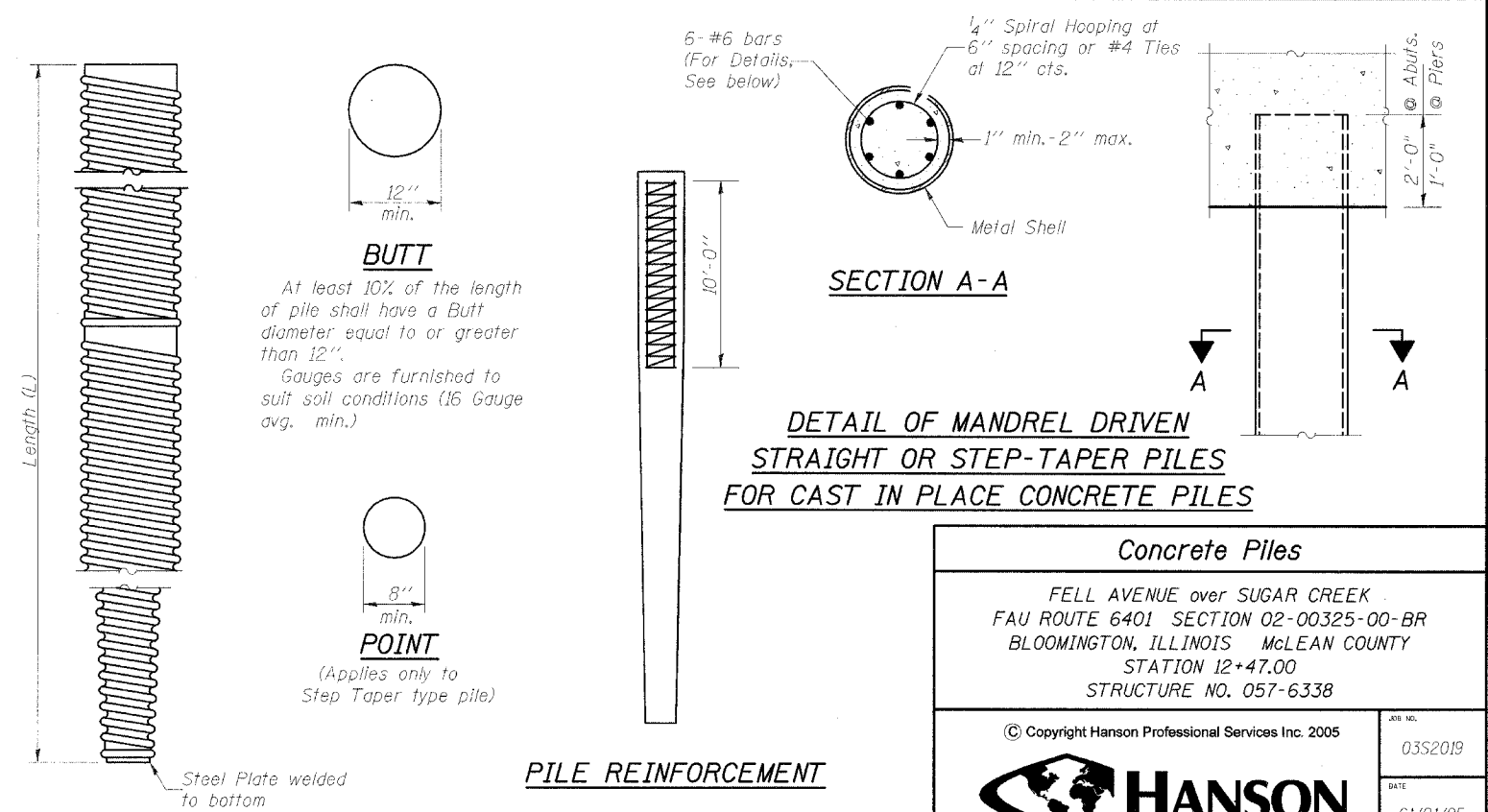


OPTIONAL FLAT END

DETAIL OF CYLINDRICAL STEEL SHELL FOR CAST IN PLACE CONCRETE PILES



Reinforcement in top of pile shall be omitted under pier footings when placed in natural ground.



DETAIL OF MANDREL DRIVEN STRAIGHT OR STEP-TAPER PILES FOR CAST IN PLACE CONCRETE PILES

Concrete Piles
 FELL AVENUE over SUGAR CREEK
 FAU ROUTE 6401 SECTION 02-00325-00-BR
 BLOOMINGTON, ILLINOIS McLEAN COUNTY
 STATION 12+47.00
 STRUCTURE NO. 057-6338

© Copyright Hanson Professional Services Inc. 2005
 JOB NO. 03S2019
 DATE 01/21/05
HANSON