

ROUTE NO.	SECTION	COUNTY	TOTAL SHEETS	SHEET NO.
C.H. 1 (FAS 369)	02-00076 -00-BR	MARSHALL	14	1
ILLINOIS				

CONTRACT NO. 87278

STATE OF ILLINOIS DEPARTMENT OF TRANSPORTATION DIVISION OF HIGHWAYS PLANS FOR PROPOSED BRIDGE REPLACEMENT AND REHABILITATION PROGRAM

**SECTION 02-00076-00-BR
MARSHALL COUNTY
PROJECT NO. BRS-369 (105)
COUNTY HIGHWAY 1 (FAS ROUTE 369)
JOB NO. C-93-089-04**

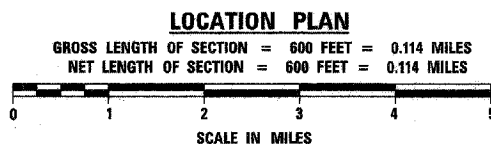
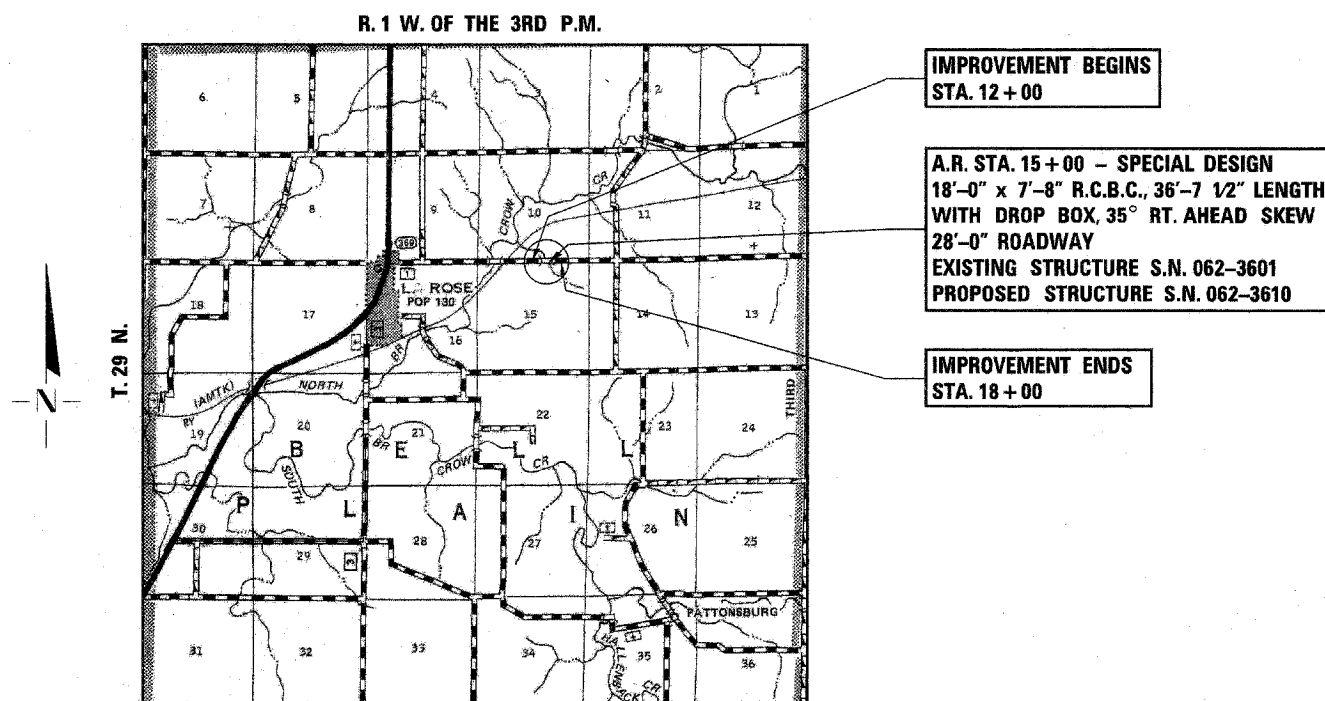
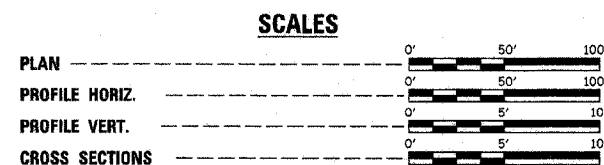
INDEX OF SHEETS

SHEET NO.	TITLE
1.	COVER SHEET
2.	SUMMARY OF QUANTITIES, GENERAL NOTES & TYPICAL SECTIONS
3.	PLAN AND PROFILE SHEET
4.	SHOULDER WIDENING AND GUARDRAIL DETAILS
5.-8.	BRIDGE PLANS
9.-14.	STATION CROSS SECTIONS

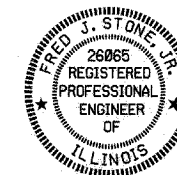
STANDARDS:

- 280001-02
- 515001-02
- 630001-05
- 630301-03
- 631026-02
- 635006-02
- 702001-05
- BLR 21-6

OVERHEAD POWER
AMERENCILCO
309-693-4762
BURIED CABLE
VERIZON NORTH, INC.
309-663-3422



**MAJOR COLLECTOR (NON-URBAN)
ADT 250-400
CURRENT ADT = 394 (2005)
3R DESIGN
40 MPH DESIGN SPEED**



Fred S. Stone, Jr. (2-09-05)
ILLINOIS PROFESSIONAL NO. 26065
EXPIRES 11-30-05

TOLL FREE JOINT UTILITY LOCATING
INFORMATION FOR EXCAVATORS (J.U.L.I.E.)
TELEPHONE NUMBER 1-800-892-0123

APPROVED	<i>February 8</i>	2005
	<i>Angel P. Minster</i>	COUNTY ENGINEER
PASSED	<i>2/18</i>	2005
	<i>July 11, 2005</i>	DISTRICT THREE ENGINEER OF LOCAL ROADS & STREETS
APPROVED	<i>2/18</i>	2005
	<i>Greg Monte</i>	DEPUTY DIRECTOR OF HIGHWAYS, REGION TWO ENGINEER
STATE OF ILLINOIS DEPARTMENT OF TRANSPORTATION		

CONTRACT NO. 87278

4440 ASH GROVE
SPRINGFIELD, IL 62711
(217) 793-8600
oasino@famvid.com

OZYURT AND STONE, INC.
CONSULTING ENGINEERS