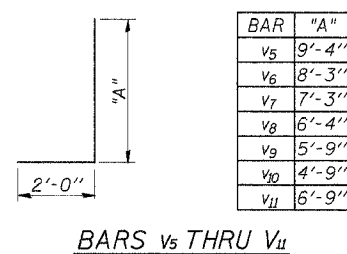
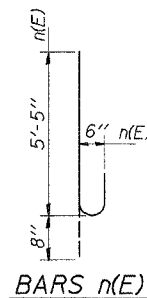
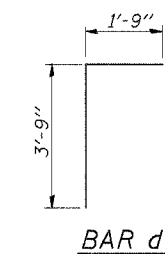
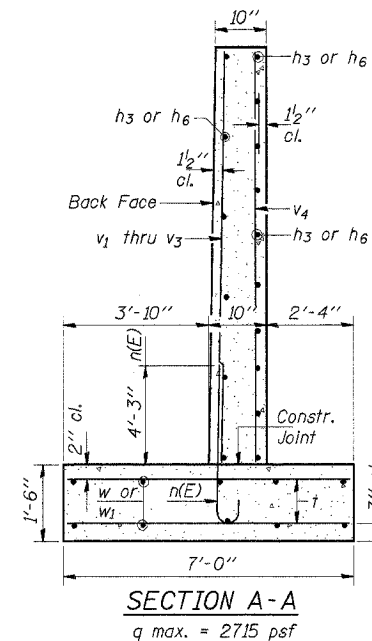
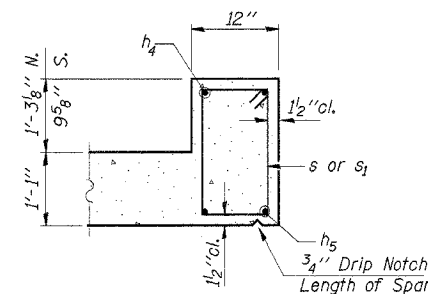
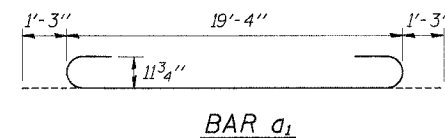
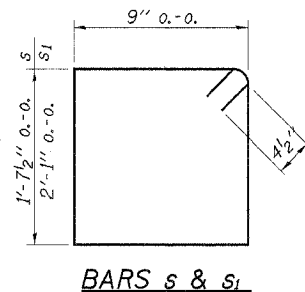
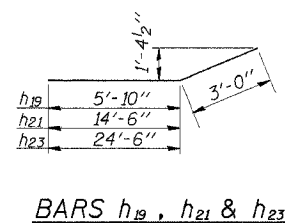
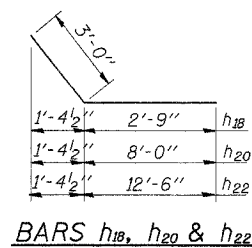


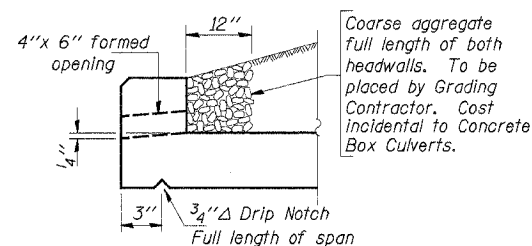
ROUTE NO.	SECTION	COUNTY	TOTAL SHEETS	SHEET NO.
C.H. 1	02-00076	MARSHALL	14	7
FAS 369	-00-BR			
ILLINOIS		CONTRACT NO. 87278		

BILL OF MATERIAL

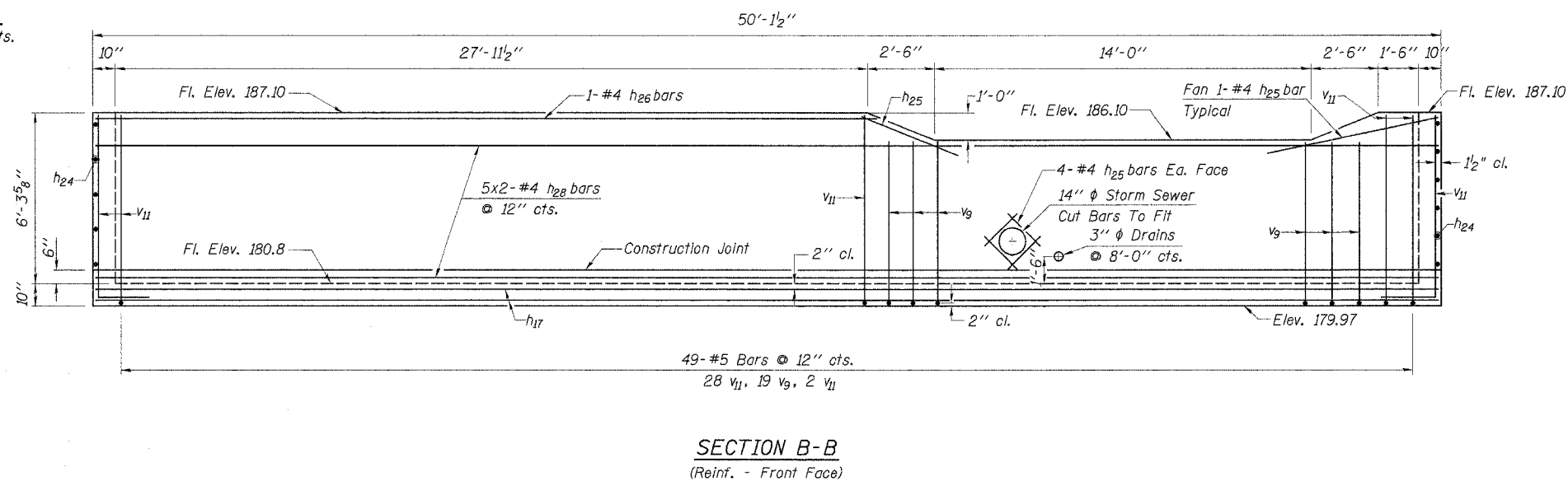
Bar	No.	Size	Length	Shape
a ₁	92	#9	21'-10"	U
a ₂	18	#4	19'-4"	—
a ₃	23	#5	19'-4"	—
a ₄	1	#4	23'-0"	—
d	28	#4	5'-6"	—
h	38	#4	18'-10"	—
h ₁	116	#6	19'-2"	—
h ₂	44	#7	19'-7"	—
h ₃	16	#4	9'-11"	—
h ₄	4	#6	22'-6"	—
h ₅	8	#11	23'-6"	—
h ₆	16	#4	19'-5"	—
h ₇	16	#5	10'-8"	—
h ₈	14	#5	14'-0"	—
h ₉	12	#5	16'-10"	—
h ₁₀	12	#5	19'-1"	—
h ₁₁	48	#5	21'-4"	—
h ₁₂	4	#5	25'-0"	—
h ₁₃	8	#5	16'-0"	—
h ₁₄	8	#5	18'-6"	—
h ₁₅	8	#5	21'-0"	—
h ₁₆	8	#5	23'-6"	—
h ₁₇	48	#5	25'-9"	—
h ₁₈	2	#6	5'-9"	—
h ₁₉	2	#6	8'-10"	—
h ₂₀	2	#6	11'-0"	—
h ₂₁	2	#6	17'-6"	—
h ₂₂	5	#6	15'-6"	—
h ₂₃	5	#6	27'-6"	—
h ₂₄	12	#4	10'-11"	—
h ₂₅	18	#4	4'-6"	—
h ₂₆	1	#4	28'-7"	—
h ₂₇	40	#6	5'-0"	—
h ₂₈	10	#4	25'-7"	—
n(E)	41	#6	6'-1"	U
s	24	#4	5'-6"	□
s ₁	24	#4	6'-5"	□
t	83	#4	6'-8"	—
v	88	#4	9'-7"	—
v ₁	14	#4	9'-8"	—
v ₂	13	#4	8'-2"	—
v ₃	14	#4	6'-7"	—
v ₄	10	#4	12'-0"	—
v ₅	5	#5	11'-4"	—
v ₆	6	#5	10'-3"	—
v ₇	6	#5	9'-3"	—
v ₈	6	#5	8'-4"	—
v ₉	29	#5	7'-9"	—
v ₁₀	20	#5	6'-9"	—
v ₁₁	32	#5	8'-9"	—
v ₁₂	4	#4	13'-8"	—
w	10	#5	19'-5"	—
w ₁	10	#5	9'-11"	—
Concrete Box Culverts	Cu. Yd.		152.7	
Reinforcement Bars, Epoxy Coated	Pound		375	
Reinforcement Bars	Pound		22,380	



BAR	"A"
v ₅	9'-4"
v ₆	8'-3"
v ₇	7'-3"
v ₈	6'-4"
v ₉	5'-9"
v ₁₀	4'-9"
v ₁₁	6'-9"



DRAIN DETAIL
Space to miss rail posts.



DESIGNED	F.J.S.
CHECKED	S.F.M.
DRAWN	S.A.P.
CHECKED	S.F.M.

CULVERT DETAILS
COUNTY HIGHWAY 1
SECTION 02-00076-00-BR
MARSHALL COUNTY
STATION 15+00

4440 ASH GROVE
SPRINGFIELD, IL 62711
(217) 983-8600
oasinc@famvid.com

OZYURT AND STONE, INC.
CONSULTING ENGINEERS

JOB NO.: 0412
FILE:0412DETAIL.dgn
DATE: 12-09-04