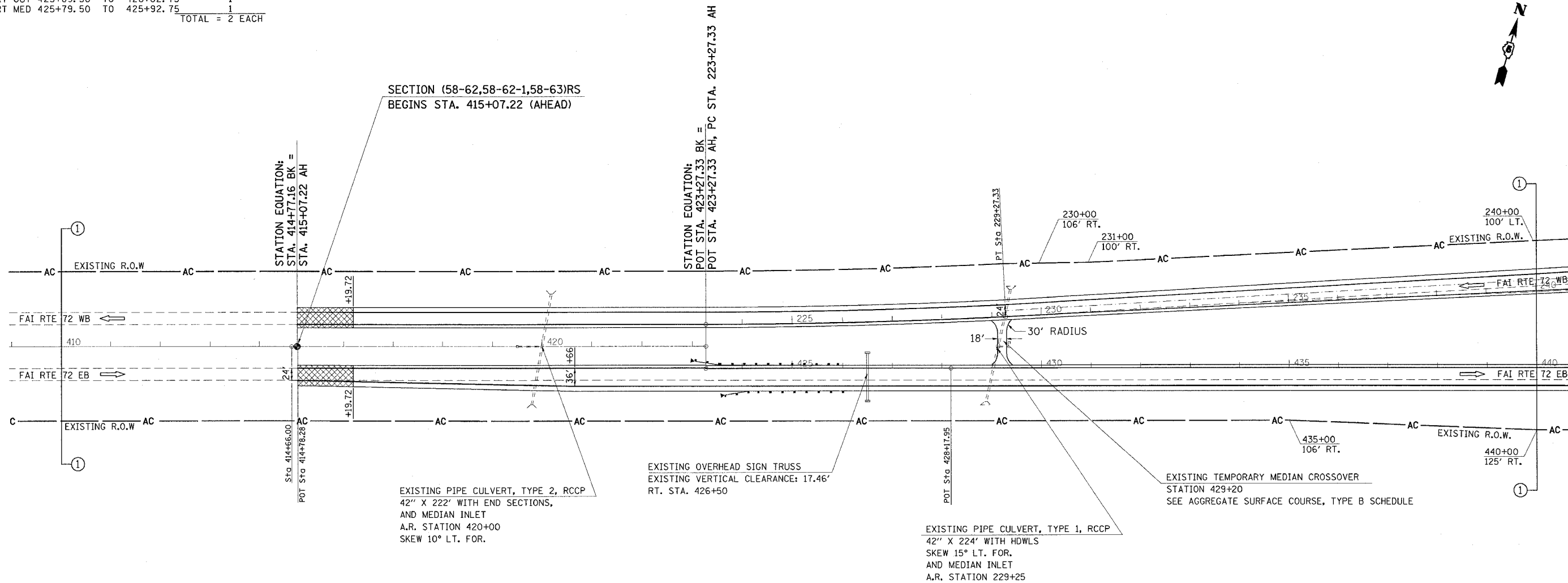
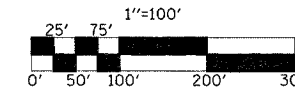


F.A.I. RTE.	SECTION	COUNTY	TOTAL SHEETS	SHEET NO.
72		MACON	135	27
STA. 409+00 TO STA. **				
FED. ROAD DIST. NO. ILLINOIS FED. AID PROJECT				
(58-62,58-62-1,58-63)RS CONTRACT NO. 90879 ** STA. 240+00 (F.A.I. 72 WB) STA. 440+00 (F.A.I. 72 EB)				

STEEL PLATE BEAM GUARDRAIL, TYPE A - 63000000
 STATION STATION LENGTH
 RT OUT 424+14.50 TO 425+89.50 175.0
 RT MED 423+54.50 TO 425+79.50 225.0
 TOTAL = 400.0 FEET

TRAFFIC BARRIER TERMINAL TYPE 1, SPECIAL (FLARED) - 63100169
 STATION STATION EACH
 RT OUT 423+64.50 TO 424+14.50 1
 RT MED 423+04.50 TO 423+54.50 1
 TOTAL = 2 EACH

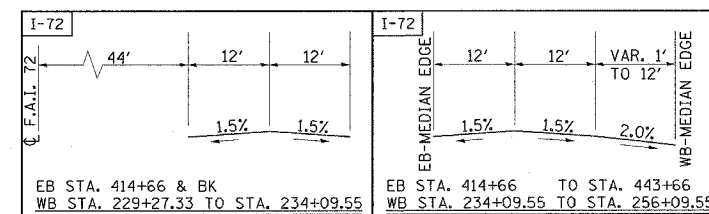
TRAFFIC BARRIER TERMINAL TYPE 2 - 63100045
 STATION STATION EACH
 RT OUT 425+89.50 TO 426+02.75 1
 RT MED 425+79.50 TO 425+92.75 1
 TOTAL = 2 EACH



LEGEND

	BITUMINOUS SURFACE REMOVAL-BUTT JOINT
	P.C.C. SURFACE REMOVAL-BUTT JOINT

TYPICAL CROSS-SECTIONS



REVISIONS	
NAME	DATE

ILLINOIS DEPARTMENT OF TRANSPORTATION

SCALE: DATE DRAWN BY CHECKED BY

SEC. 15, T. 16 N., R. 1 E., 3RD P.M.

STA. 409+00 TO 440+00