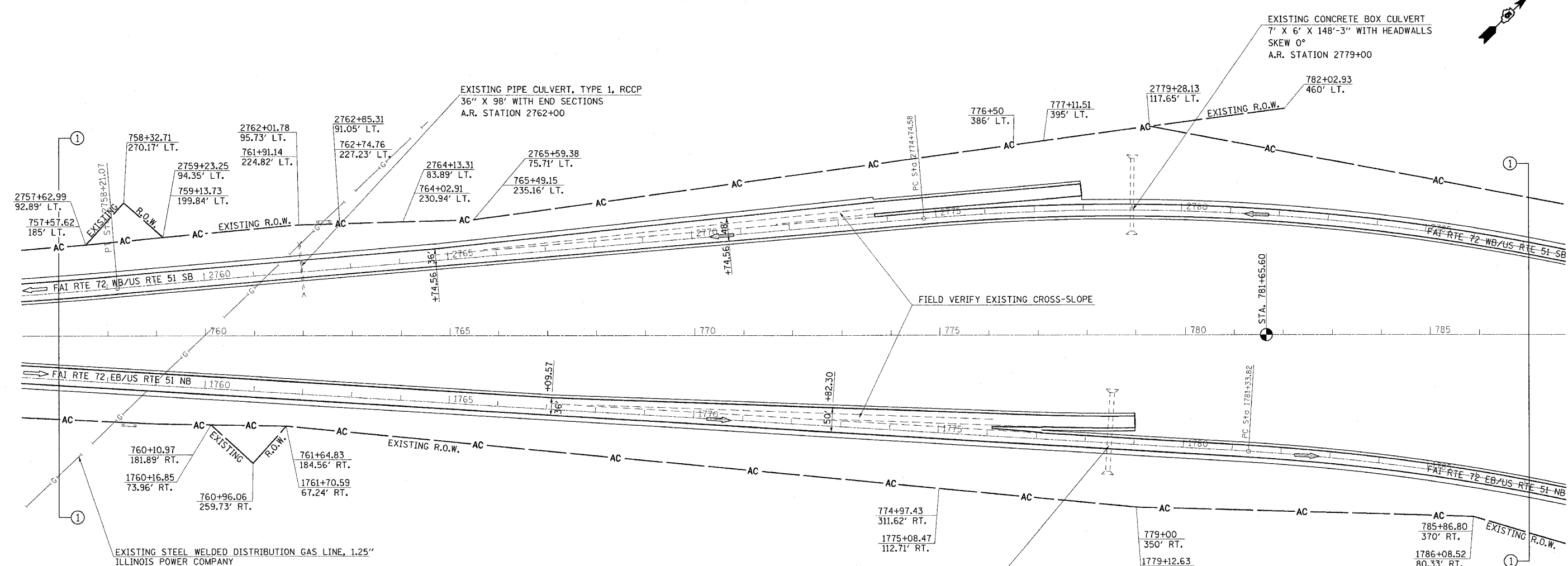
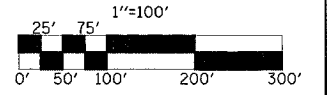


SEC. 20, T. 17 N., R. 2 E., 3RD P.M.

F.A.I. RTE.	SECTION	COUNTY	TOTAL SHEETS	SHEET NO.
72		MACON	135	39
STA.	TO STA.			
FED. ROAD DIST. NO.	ILLINOIS	FED. AID PROJECT		
(58-62,58-62-1,58-63)RS CONTRACT NO. 90879 ** STA. 2757+00 TO STA. 2787+00 (F.A.I. 72 WB) STA. 1757+00 TO STA. 1787+00 (F.A.I. 72 EB)				



EXISTING STEEL WELDED DISTRIBUTION GAS LINE, 1.25" ILLINOIS POWER COMPANY

EXISTING CONCRETE BOX CULVERT
9' X 6' X 160'-0" WITH HEADWALLS
SKEW 0°
A.R. STATION 1778+50

LEGEND	
	BITUMINOUS SURFACE REMOVAL-BUTT JOINT
	P.C.C. SURFACE REMOVAL-BUTT JOINT
PLAN NOTE	
DELINEATORS PLACED IN EXISTING RAMP GORE AREAS SHALL BE PLACED WITH A CORE DRILL AND INCLUDED IN COST ASSOCIATED WITH 63500105 DELINEATORS.	

REVISIONS	
NAME	DATE

SEC. 29, T. 17 N., R. 2 E., 3RD P.M.

SEC. 28, T. 17 N., R. 2 E., 3RD P.M.

SCALE: DATE DRAWN BY CHECKED BY

STA. 757+00 TO 787+00