

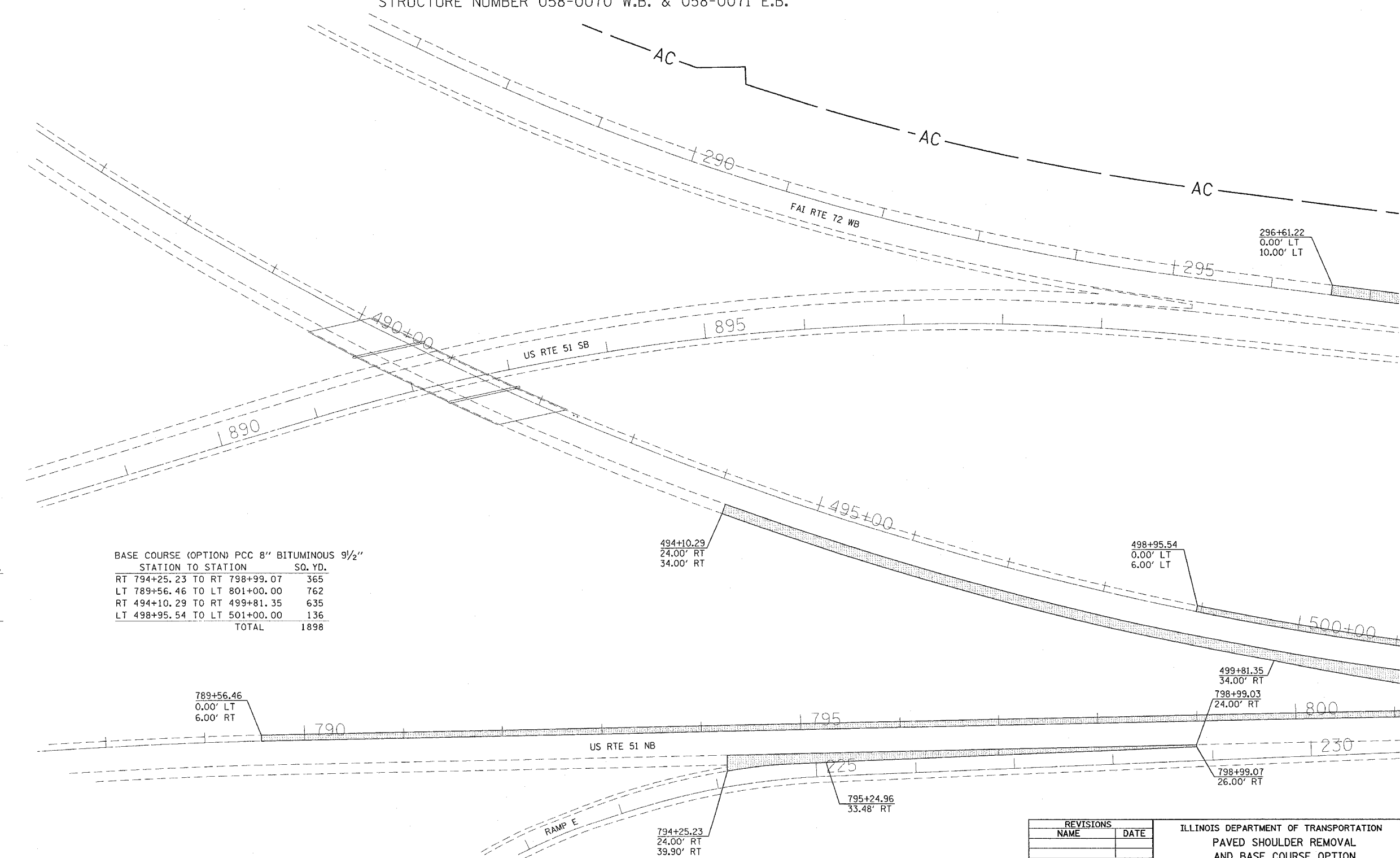
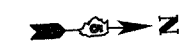
F.A.I. RTE.	SECTION	COUNTY	TOTAL SHEETS	SHEET NO.
72		MACON	135	48

STA. 483+00 TO STA. 501+00
 FED. ROAD DIST. NO. ILLINOIS FED. AID PROJECT

• (58-62,58-62-1,58-63)RS
 CONTRACT NO. 90879

PAVED SHOULDER REMOVAL AND BASE COURSE OPTION

STRUCTURE NUMBER 058-0068 W.B. & 058-0069 E.B.
 STRUCTURE NUMBER 058-0070 W.B. & 058-0071 E.B.



PAVED SHOULDER REMOVAL

STATION TO STATION	SQ. YD.
RT 794+25.23 TO RT 798+99.07	365
LT 789+56.46 TO LT 801+00.00	762
RT 494+10.29 TO RT 499+81.35	635
LT 498+95.54 TO LT 501+00.00	136
TOTAL	1898

BASE COURSE (OPTION) PCC 8" BITUMINOUS 9 1/2"

STATION TO STATION	SQ. YD.
RT 794+25.23 TO RT 798+99.07	365
LT 789+56.46 TO LT 801+00.00	762
RT 494+10.29 TO RT 499+81.35	635
LT 498+95.54 TO LT 501+00.00	136
TOTAL	1898

REVISIONS	
NAME	DATE

ILLINOIS DEPARTMENT OF TRANSPORTATION
 PAVED SHOULDER REMOVAL
 AND BASE COURSE OPTION
 F.A.I. ROUTE 72
 SECTION (58-62,58-62-1,58-63)RS
 MACON COUNTY

SCALE: VERT. 1" = 50'
 HORIZ. 1" = 50'
 DATE 10/22/03

DRAWN BY CADD
 CHECKED BY