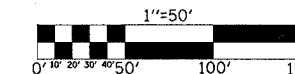


F.A.I. RTE.	SECTION	COUNTY	TOTAL SHEETS	SHEET NO.
72		MACON	135	57
STA. 483+00		TO STA. 501+00		
FED. ROAD DIST. NO.		ILLINOIS FED. AID PROJECT		

(58-62,58-62-1,58-63)RS
CONTRACT NO. 90879



PAVEMENT MARKING REMOVAL

STATION TO STATION	SQ. FT.
RT 491+95.75 TO RT 501+00.00	301.12
LT 789+56.46 TO LT 801+00.00	380.80
RT 788+65.97 TO RT 796+91.65	274.95
RT 794+25.23 TO RT 796+91.65	88.42
LT 224+80.00 TO LT 231+00.00	206.46
TOTAL	1251.75

TRAFFIC CONTROL STAGE II

STRUCTURE NUMBER 058-0068 W.B. & 058-0069 E.B.
STRUCTURE NUMBER 058-0070 W.B. & 058-0071 E.B.

TEMPORARY PAINT PAVEMENT MARKING LINE 4"

STATION TO STATION	FOOT	
RT 491+95.75 TO RT 501+00.00	904.25	WHITE
LT 789+56.46 TO LT 801+00.00	1143.54	YELLOW
RT 788+65.97 TO RT 796+91.65	825.68	WHITE
RT 794+25.23 TO RT 796+91.65	266.42	YELLOW
LT 224+80.00 TO LT 231+00.00	620.00	WHITE
TOTAL	3759.89	

CURVE #1	FAI RTE 72 EB
START	491+95.75
END	502+35.75
RADIUS	3298.0'

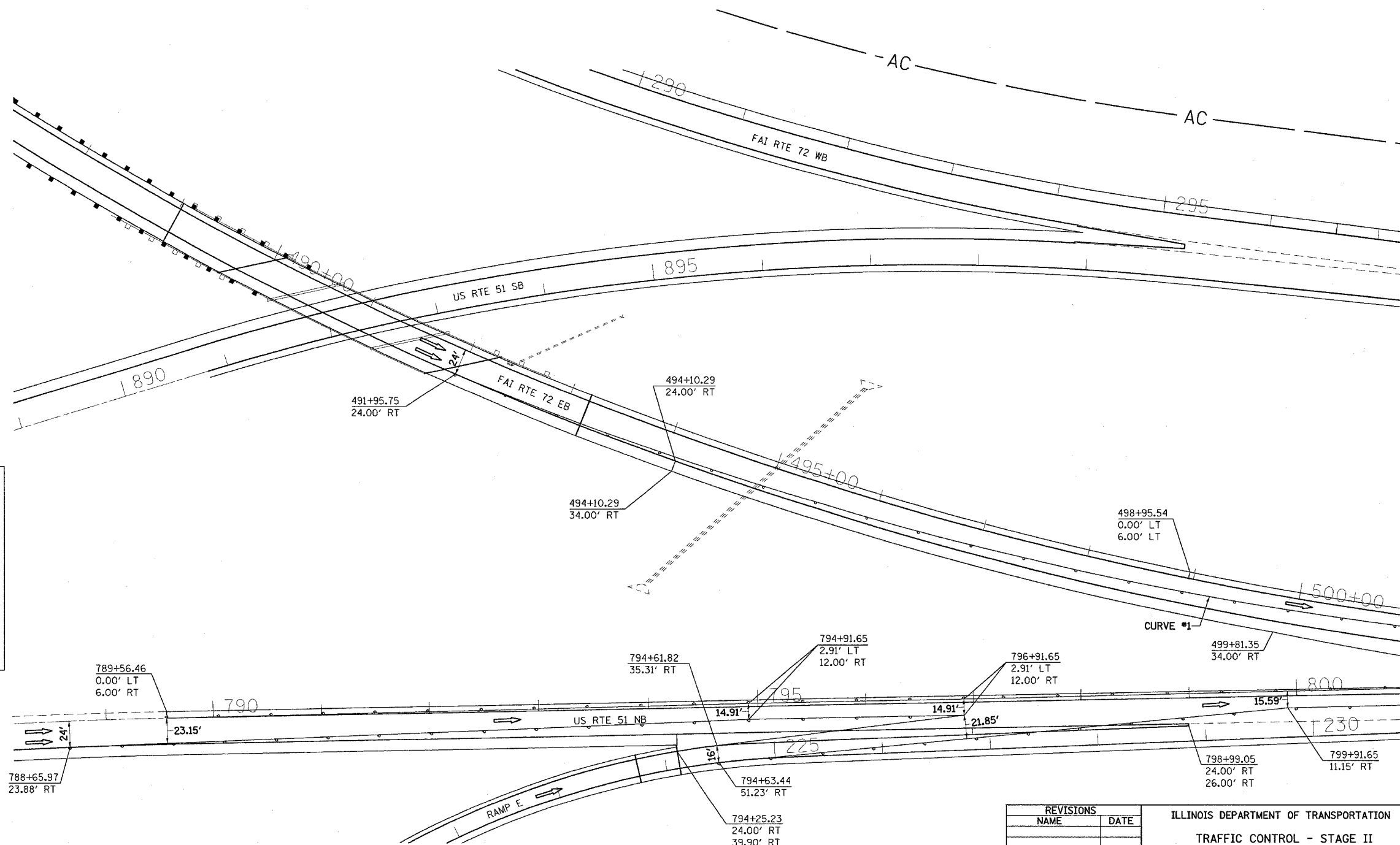
NOTES:

TRAFFIC DETAILS NOT SHOWN ARE TO CONFORM WITH STANDARDS 701401, 701402 AND 701411.

DIRECTION INDICATOR BARRICADES REQUIRED IN ALL LANE CLOSER TAPERS WHEN USING STANDARDS 701401 AND 701402.

MESSAGE BOARD MAY BE ADJUSTED TO MEET FIELD CONDITIONS.

RESIDENT ENGINEER AND TRAFFIC CONTROL SUPERVISOR WILL PROVIDE APPROPRIATE MESSAGE FOR THE CHANGEABLE MESSAGE SIGN.



REVISIONS		ILLINOIS DEPARTMENT OF TRANSPORTATION
NAME	DATE	
		TRAFFIC CONTROL - STAGE II F.A.I. ROUTE 72 SECTION (58-62,58-62-1,58-63)RS MACON COUNTY

SCALE: VERT. 1" = 50'
HORIZ. 1" = 50'
DATE 10/22/03

DRAWN BY CADD
CHECKED BY