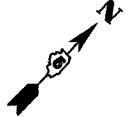
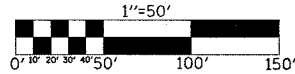


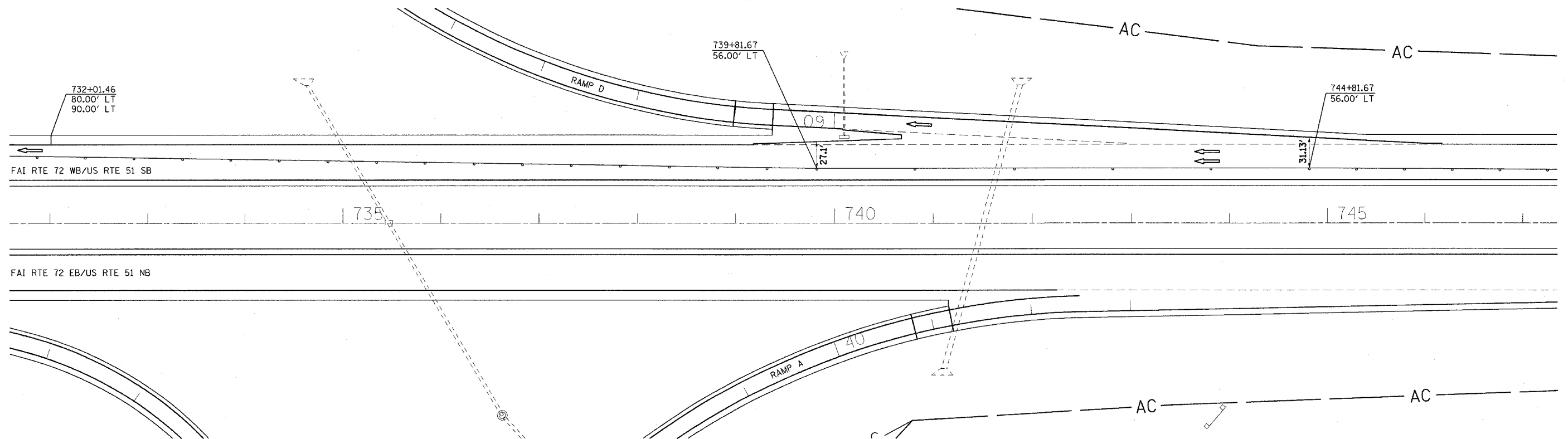
TRAFFIC CONTROL STAGE I

STRUCTURE NUMBER 058-0074 E.B.
STRUCTURE NUMBER 058-0075 W.B.

F.A.I. SHEETS NO.	SECTION	COUNTY	TOTAL SHEETS	SHEET NO.
72	•	MACON	135	63
STA. 732+00		TO STA. 747+00		
FED. ROAD DIST. NO. ILLINOIS FED. AID PROJECT				
• (58-62,58-62-1,58-63)RS CONTRACT NO. 90879				







NOTES:

TRAFFIC DETAILS NOT SHOWN ARE TO CONFORM WITH STANDARD 701402 AND STANDARD 701411 AND SPECIAL FREEWAY DETAIL.

DIRECTION INDICATOR BARRICADES REQUIRED IN ALL LANE CLOSER TAPERS WHEN USING STANDARD 701401 AND 701402 AND SPECIAL FREEWAY DETAIL.

MESSAGE BOARD MAY BE ADJUSTED TO MEET FIELD CONDITIONS.

RESIDENT ENGINEER AND TRAFFIC CONTROL SUPERVISOR WILL PROVIDE APPROPRIATE MESSAGE FOR THE CHANGEABLE MESSAGE SIGN.

PAVEMENT MARKING REMOVAL		
STATION TO STATION		SQ. FT.
LT 732+00.00 TO LT 747+00.00		500
732+00.00 TO LT 739+81.69		651
739+81.69 TO 747+00.00		239
TOTAL		1390

TEMPORARY PAINT PAVEMENT MARKING LINE 4"		
STATION TO STATION	FOOT	
LT 732+00.00 TO LT 747+00.00	1500	YELLOW
TOTAL	1500	

REVISIONS	
NAME	DATE

ILLINOIS DEPARTMENT OF TRANSPORTATION
TRAFFIC CONTROL - STAGE I
F.A.I. ROUTE 72
SECTION (58-62,58-62-1,58-63)RS
MACON COUNTY

SCALE: VERT. 1" = 50'
HORIZ. 1" = 50'
DATE 10/22/03

DRAWN BY CADD
CHECKED BY