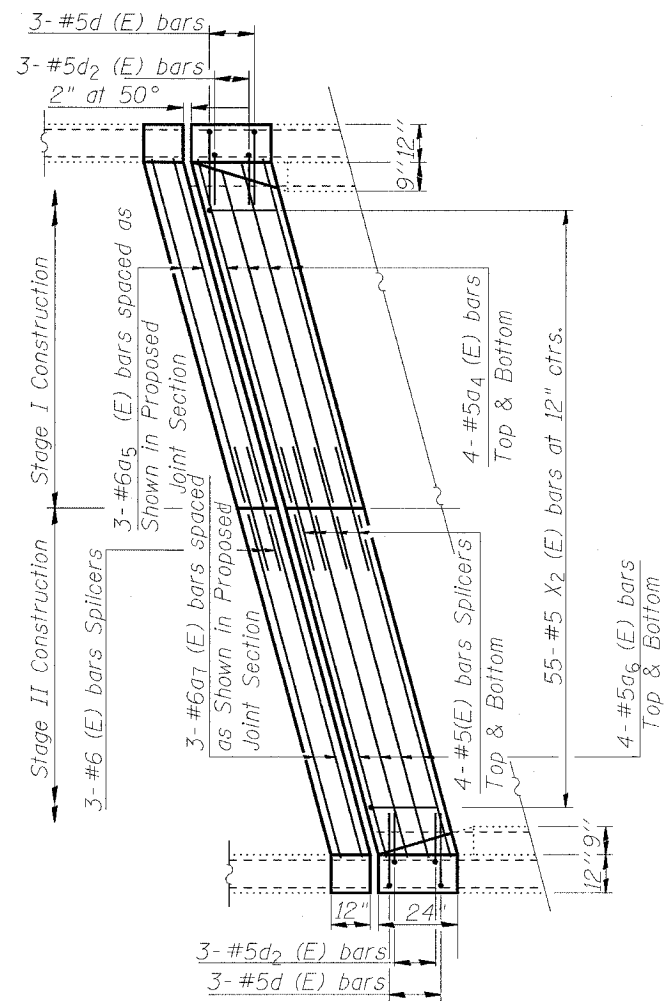


EXISTING PARTIAL PLAN
 JOINT AT SOUTH ABUTMENT



PROPOSED PARTIAL PLAN
 JOINT AT SOUTH ABUTMENT

BILL OF MATERIAL

| Bar | No. | Size | Length | Shape |
|----------------------------------|-----|------|---------|-------|
| a ₄ (E) | 8 | #5 | 28'-0" | — |
| a ₅ (E) | 3 | #6 | 28'-0" | — |
| a ₆ (E) | 8 | #5 | 29'-0" | — |
| a ₇ (E) | 3 | #6 | 29'-0" | — |
| d(E) | 6 | #5 | 4'-7" | ┘ |
| d ₂ (E) | 6 | #5 | 4'-2" | ┘ |
| x ₂ (E) | 55 | #5 | 2'-2" | — |
| Reinforcement Bars, Epoxy Coated | | | Pound | 920 |
| Concrete Superstructure | | | Cu. Yd. | 8.4 |

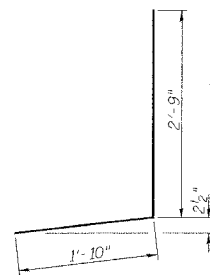
Reinforcement bars designated (E) shall be epoxy coated.

Hatched area indicates Concrete Removal.

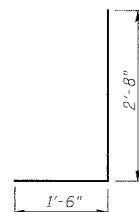
I.F. = Inside Face

O.F. = Outside Face

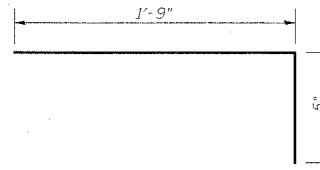
See Sheet 10 of 16 for Section Thru Parapet and Proposed Joint Section



BAR d(E)



BAR d₂(E)



BARS x₂(E)

JOINT REPAIR AT SOUTH ABUTMENT
 F.A.I. ROUTE 72 SEC. 58-63HVB
 MACON COUNTY
 S.N. 058-0074