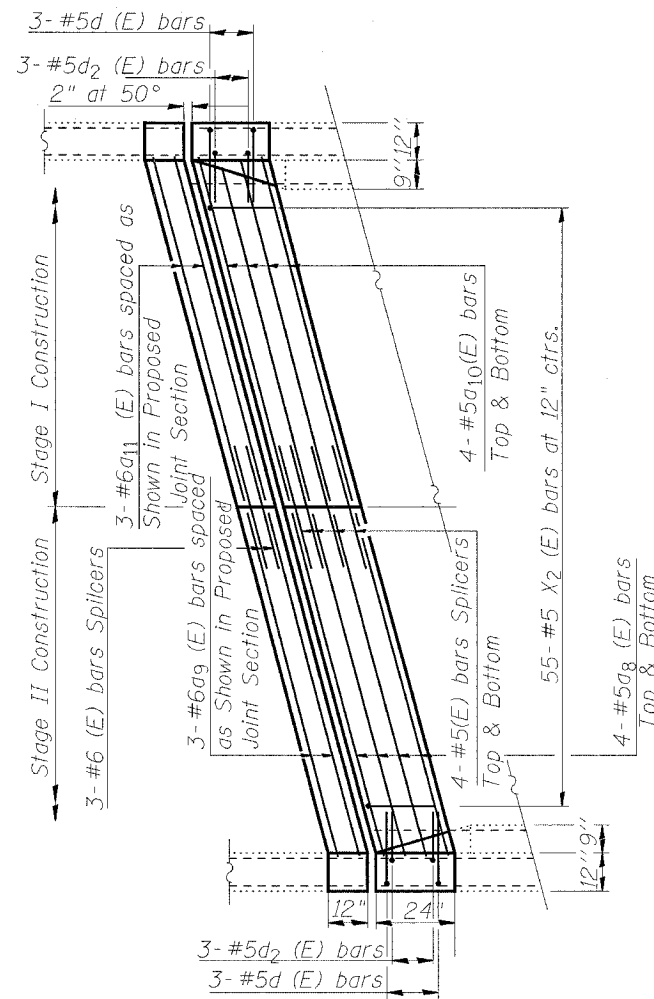


**EXISTING PARTIAL PLAN**  
 JOINT AT SOUTH ABUTMENT



**PROPOSED PARTIAL PLAN**  
 JOINT AT SOUTH ABUTMENT

**BILL OF MATERIAL**

Bar	No.	Size	Length	Shape
a <sub>8</sub> (E)	8	#5	33'-0"	—
a <sub>9</sub> (E)	3	#6	33'-0"	—
a <sub>10</sub> (E)	8	#5	32'-3"	—
a <sub>11</sub> (E)	3	#6	32'-3"	—
d(E)	6	#5	4'-7"	└┘
d <sub>2</sub> (E)	6	#5	4'-2"	└┘
x <sub>2</sub> (E)	63	#5	2'-2"	—
Reinforcement Bars, Epoxy Coated			Pound	1040
Concrete Superstructure			Cu. Yd.	10.0

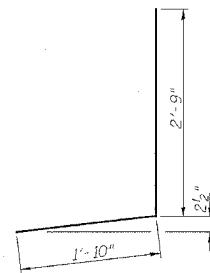
Reinforcement bars designated (E) shall be epoxy coated.

Hatched area indicates Concrete Removal.

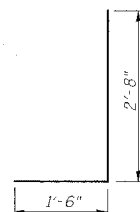
I.F. = Inside Face

O.F. = Outside Face

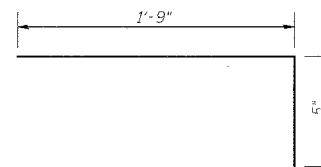
See Sheet 10 of 16 for Section Thru Parapet and Proposed Joint Section



BAR d(E)



BAR d<sub>2</sub>(E)



BARS x<sub>2</sub>(E)

**JOINT REPAIR AT SOUTH ABUTMENT**  
**F.A.I. ROUTE 72 SEC. 58-63HVB**  
**MACON COUNTY**  
**S.N. 058-0075**