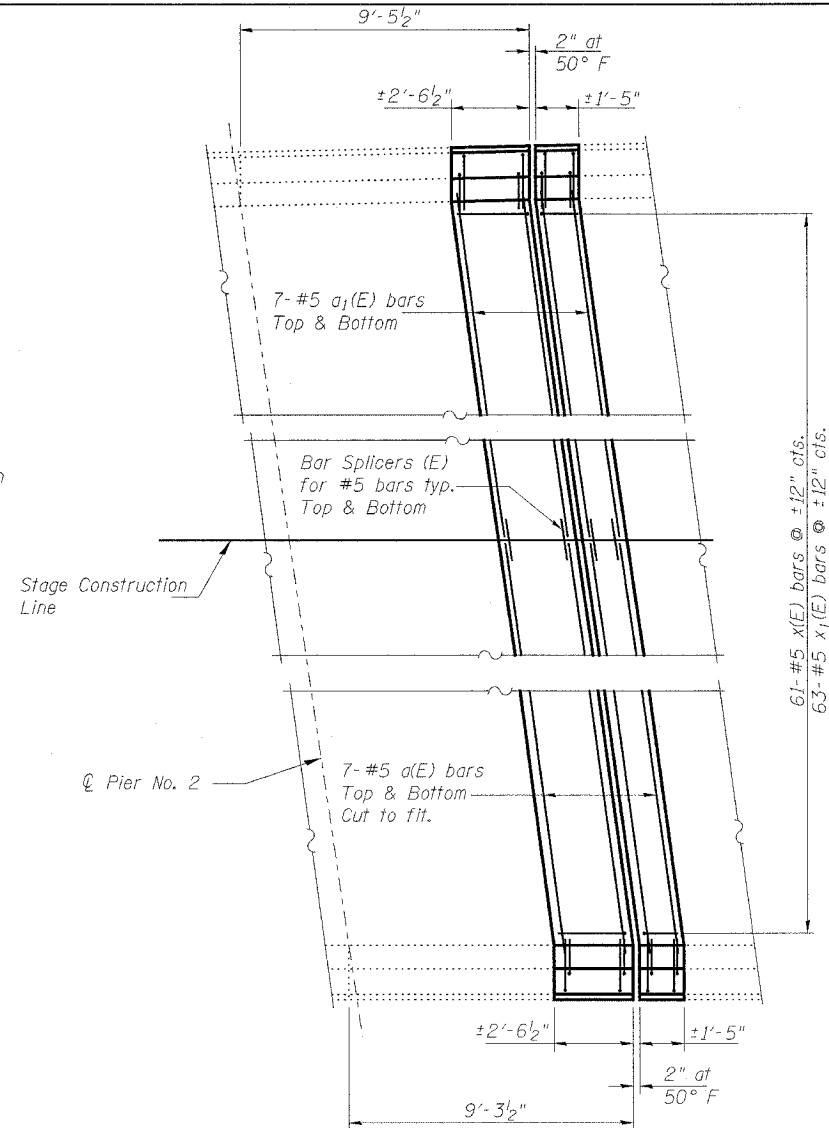
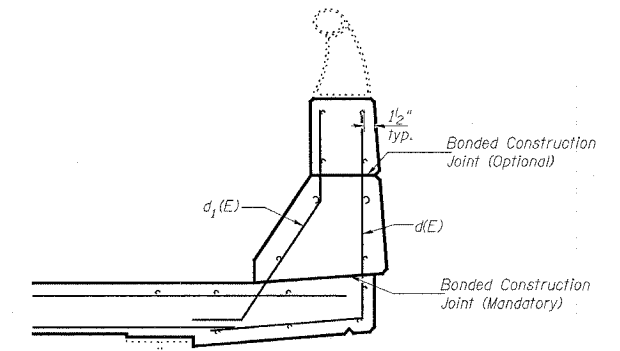


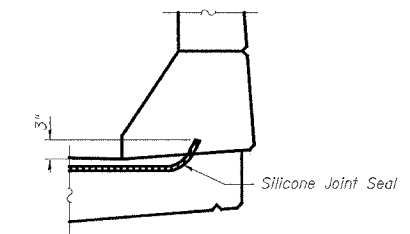
EXISTING PARTIAL PLAN
JOINT AT LINK



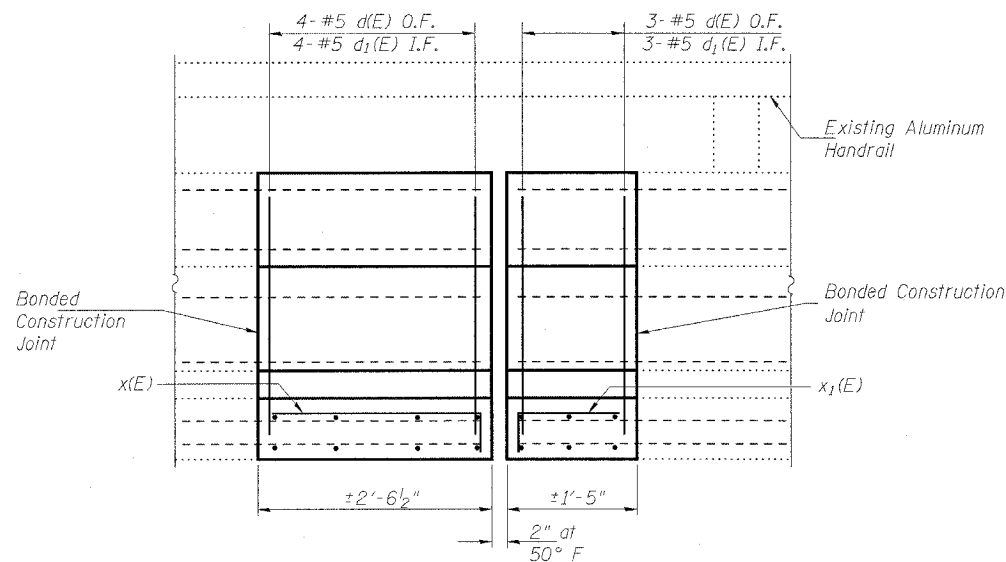
PROPOSED PARTIAL PLAN
JOINT AT LINK



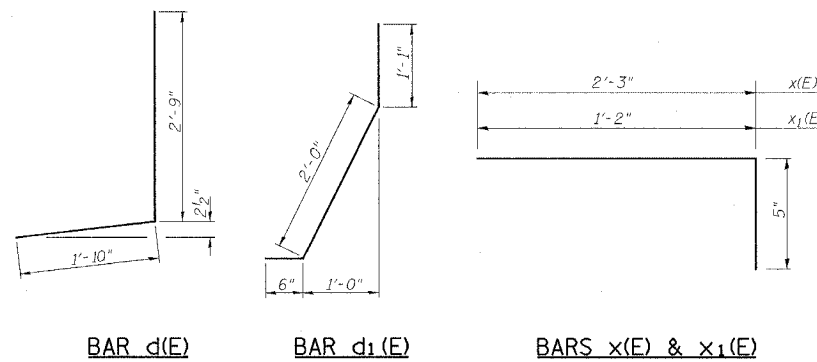
SECTION THRU PARAPET



TYPICAL END OF SEAL TREATMENT AT EXPANSION JOINT



PARAPET ELEVATION AT LINK



BILL OF MATERIAL

| Bar No. | Size | Length | Shape |
|----------------------------------|------|---------|-------------|
| d(E) | #5 | 28'-0" | — |
| a1(E) | #5 | 36'-10" | — |
| d(E) | #5 | 4'-7" | ┌ |
| d1(E) | #5 | 3'-7" | ┌ |
| x(E) | #5 | 2'-8" | — |
| x1(E) | #5 | 1'-7" | — |
| Reinforcement Bars, Epoxy Coated | | | Pound 1340 |
| Concrete Superstructure | | | Cu. Yd. 7.5 |

Reinforcement bars designated (E) shall be epoxy coated.
Hatched area indicates Concrete Removal.
I.F. = Inside Face
O.F. = Outside Face

JOINT REPAIR AT LINK
F.A.I. ROUTE 72 SEC. 58-63HVB
MACON COUNTY
S.N. 058-0074