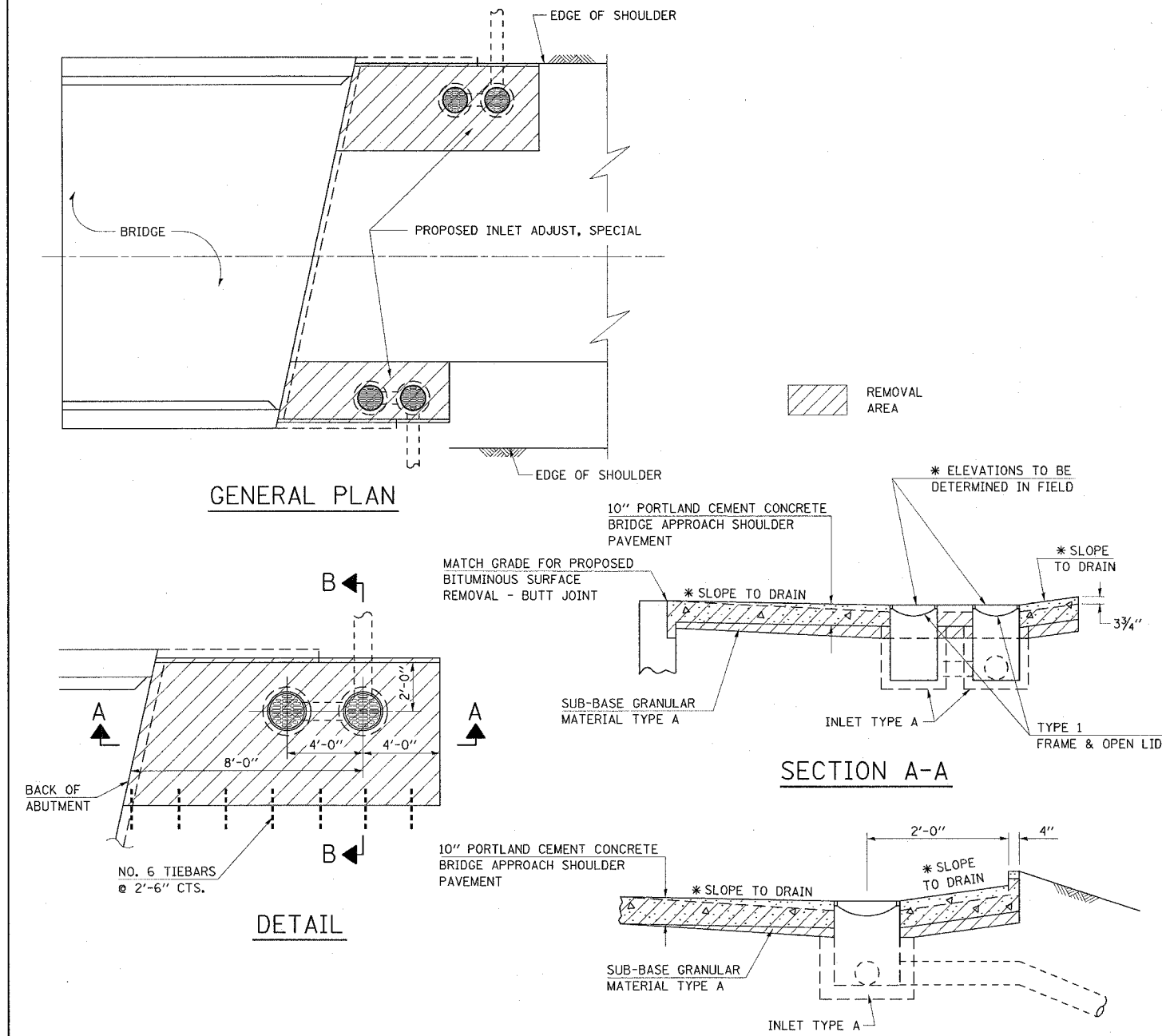


### DETAIL OF INLET ADJUSTMENT, SPECIAL



GENERAL PLAN

DETAIL

SECTION A-A

SECTION B-B

#### GENERAL NOTES

- 1 INLETS SHALL BE RAISED BY METHODS APPROVED BY ENGINEER.
- 2 NO. 6 TIEBARS SHALL BE USED UNLESS OTHERWISE NOTED.
- 3 IF FIELD CONDITIONS DO NOT PROHIBIT FULL USE OF DETAIL THE ENGINEER SHALL MAKE MODIFICATIONS WITH NO ADDITIONAL COMPENSATION.
- 4 ELEVATIONS AND GRADES SHALL BE DETERMINED BY ENGINEER IN FIELD.
- 5 ALL WORK SHALL BE PAID FOR AT THE CONTRACT UNIT PRICE PER EACH FOR INLET ADJUSTMENT, SPECIAL WHICH PRICE SHALL INCLUDE ALL LABOR AND MATERIALS AS SPECIFIED AND NO ADDITIONAL COMPENSATION SHALL BE ALLOWED.

\* TO BE DETERMINED IN FIELD

REVISOR JMS  
3-25-05

#### TOTAL BILL OF MATERIAL

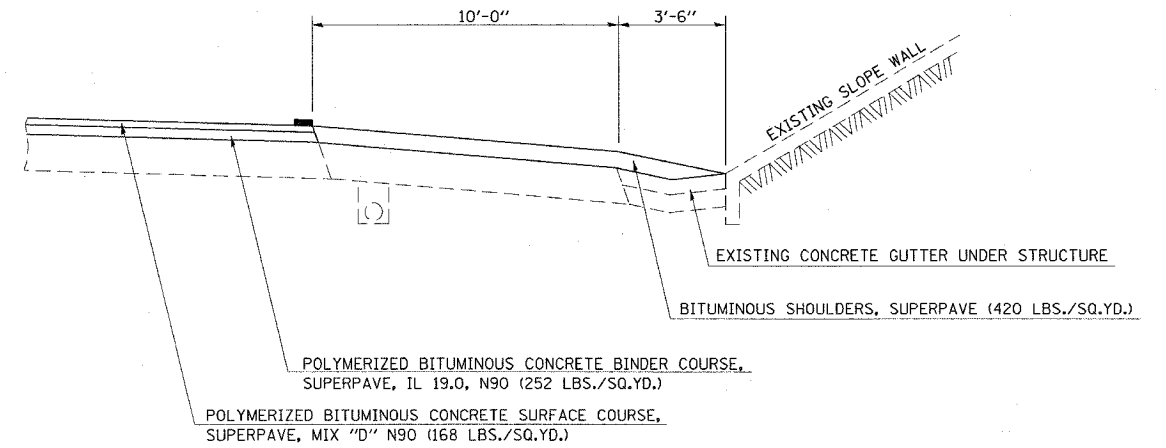
10" PORTLAND CEMENT CONCRETE BRIDGE APPROACH SHOULDER PAVEMENT	14.2 SQ YD
SUB-BASE GRANULAR MATERIAL, TYPE A	14.2 SQ YD
EPOXY COATED REBAR	7.0 EACH
NOTE: QUANTITIES MAY VARY DUE TO INLET SIZE	

F.A.I. RTE.	SECTION	COUNTY	TOTAL SHEETS	SHEET NO.
72		MACON	135	116

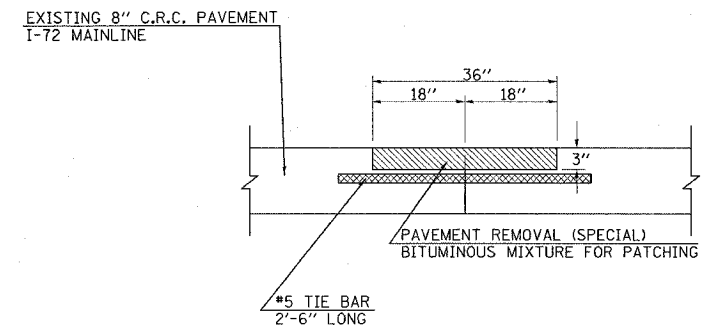
• (58-62,58-62-1,58-63)RS  
CONTRACT NO. 90879

### I-72 FLOWLINE DETAIL UNDER STRUCTURES

STATION	TO	STATION
EB 631+23		EB 631+89
EB 706+10.5		EB 706+65.5
EB 894+68		EB 895+00
WB 2835+78		WB 2836+10
WB 707+62.5		WB 708+17.5
IL 121 909+63		911+57



### PAVEMENT PATCHING (PARTIAL DEPTH)



#### GENERAL NOTE

THE WORK REQUIRED TO CONSTRUCT THE PARTIAL DEPTH PATCH SHALL BE IN ACCORDANCE WITH AND PAID FOR AS SPECIFIED IN THE SPECIAL PROVISIONS ENTITLED "PAVEMENT PATCHING (PARTIAL DEPTH)"

