

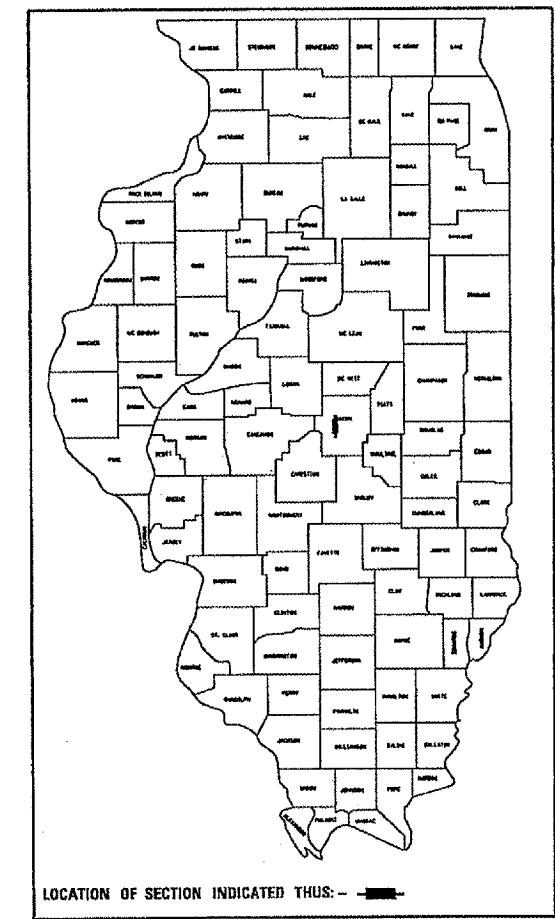
FAP ROUTE	SECTION	COUNTY	TOTAL SHEETS	SHEET NO.
716	130(R,R-1)RS	MACON	26	1

CONTRACT NO. 90929
D-95-020-98

STATE OF ILLINOIS
DEPARTMENT OF TRANSPORTATION
DIVISION OF HIGHWAYS
PLANS FOR PROPOSED
HIGHWAY IMPROVEMENT

F.A.P. ROUTE 716 (IL 48)
SECTION 130(R,R-1)RS
MACON COUNTY
PROJECT F -0716 (010)

FOR INDEX OF SHEETS, SEE SHEET NO. 3
FOR SUMMARY OF QUANTITIES, SEE SHEET NO. 4

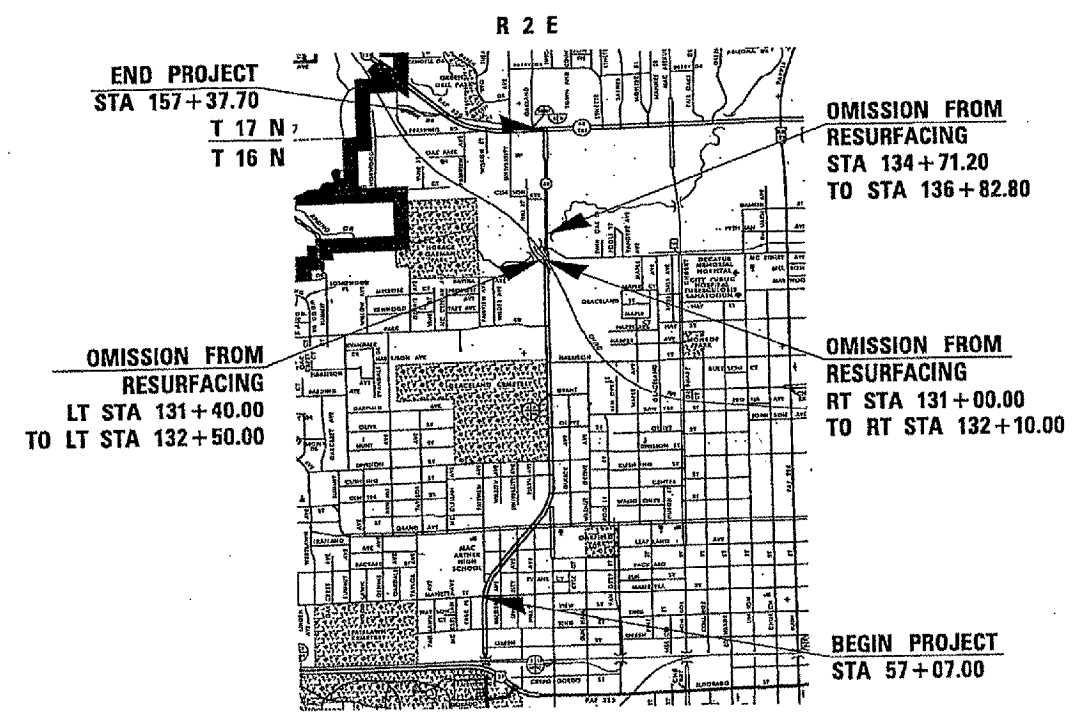


DESIGNED BY: JD CLEMENT

PROJECT ENGINEER: KENSIL GARNETT

SQUAD LEADER: CM SHEEHY

C-95-020-98
RESURFACING



STATE OF ILLINOIS
DEPARTMENT OF TRANSPORTATION
DIVISION OF HIGHWAYS

SUBMITTED Feb 8, 2005

[Signature]
DEPUTY DIRECTOR OF HIGHWAYS, REGION 3 ENGINEER

March 25, 2005

[Signature]
ENGINEER OF DESIGN AND ENVIRONMENT

March 25, 2005

[Signature]
DIRECTOR OF HIGHWAYS, CHIEF ENGINEER

FOR UNDERGROUND UTILITY
LOCATIONS CALL
TOLL FREE J.U.L.I.E. TELEPHONE NO.
1-800-892-0123
DECATUR TOWNSHIP

ADT 16,000 (2003)
DESIGN DESIGNATION
RESURFACING

FUNCTIONAL CLASSIFICATION
OTHER PRINCIPAL ARTERIAL

CONTRACT NO. 90929

TOTAL LENGTH OF SECTION & PROJECT = 10030.70 FEET = 1.900 MILES
NET LENGTH OF SECTION & PROJECT = 9599.10 FEET = 1.81 MILES

PRINTED BY AUTHORITY OF THE STATE OF ILLINOIS

HIGHWAY STANDARDS

000001-04 STANDARD SYMBOLS, ABBREVIATIONS, AND PATTERNS
 001006 DECIMALS OF AN INCH AND OF A FOOT
 442201-01 CLASS C AND D PATCHES
 604006-02 FRAME AND GRATE, TYPE 3
 604051-01 FRAME AND GRATE, TYPE 11
 606001-02 CONCRETE CURB TYPE B AND COMBINATION CONCRETE
 CURB & GUTTER
 606301-02 PORTLAND CEMENT CONCRETE ISLANDS AND MEDIANS
 606306-01 CORRUGATED PORTLAND CEMENT CONCRETE MEDIANS
 701426-02 TRAFFIC CONTROL AND PROTECTION
 701601-04 TRAFFIC CONTROL AND PROTECTION
 701602-02 TRAFFIC CONTROL AND PROTECTION
 701606-04 URBAN LANE CLOSURE, MULTI-LANE, 2W WITH
 MOUNTABLE MEDIAN
 701701-04 TRAFFIC CONTROL AND PROTECTION
 702001-05 TRAFFIC CONTROL DEVICES
 780001-01 TYPICAL PAVEMENT MARKINGS
 781001-02 TYPICAL APPLICATIONS RAISED REFLECTIVE
 PAVEMENT MARKERS
 886001 DETECTOR LOOP INSTALLATION
 886006 TYPICAL LAYOUT FOR DETECTOR LOOPS

F.A.P. RTE.	SECTION	COUNTY	TOTAL SHEETS	SHEET NO.
716	130(R,R-1)RS	MACON	36	2

CONTRACT NO. 90929

INDEX OF SHEETS

1. COVER SHEET
2. HIGHWAY STANDARDS
2. INDEX OF SHEETS
3. -4. GENERAL NOTES
5. -6. SUMMARY OF QUANTITIES
7. -13. EXISTING TYPICAL CROSS SECTIONS
14. -20. PROPOSED TYPICAL CROSS SECTION
21. -30. SCHEDULE OF QUANTITIES
31. CROSSWALK DETAIL, SURVEY MARKER DETAIL
32. DETAIL OF SURVEY MARKERS
33. -35. TYPICAL APPLICATIONS OF PAVEMENT MARKINGS
36. MEDIAN DETAILS, BUTT JOINT DETAILS

F.A.P. RTE.	SECTION	COUNTY	TOTAL SHEETS	SHEET NO.
716	130(R,R-URS)	MACON	36	3

CONTRACT NO. 90929

GENERAL NOTES

G. N. -100

ENGLISH UNITS OF MEASUREMENT SHALL GOVERN OVER AND SUPERSEDE ANY METRIC UNITS SHOWN IN THIS CONTRACT. WHERE INCLUDED, METRIC UNITS ARE FOR INFORMATION ONLY.

G. N. -406

THE QUANTITIES INCLUDED IN THE PLANS FOR BITUMINOUS CONCRETE RESURFACING ARE INTENDED TO GIVE THE COVERAGE SHOWN ON THE TYPICAL CROSS SECTIONS. IT IS NOT INTENDED TO INCREASE THE THICKNESS OF THE BITUMINOUS MIXTURE IN ORDER TO USE ALL OF THE QUANTITIES INCLUDED IN THE CONTRACT. DESIGN THICKNESS CAN BE BACK CALCULATED USING THE CONVERSION FACTOR OF 1 IN THICKNESS = 112 POUNDS/SQUARE YARD.

G. N. -406D

ALL LEVELING BINDER OR BINDER SHALL BE GIVEN A FOG COAT OF PRIME BEFORE THE SURFACE COURSE IS PLACED WHEN DIRECTED BY THE ENGINEER.

THE FOG COAT WILL BE PAID FOR AT THE CONTRACT UNIT PRICE PER GALLON FOR BITUMINOUS MATERIAL (PRIME COAT) AND NO ADDITIONAL COMPENSATION WILL BE ALLOWED.

G. N. -406H

MIXTURE REQUIREMENTS

The following mixture requirements are applicable for this project:

<u>Location</u>	<u>IL 48</u>	<u>IL 48</u>	<u>IL 48</u>	
Mixture Use	SURF.	Class D Patch	Lvl Binder, P.D. Patch	Incid,
AC/PG	PG 64-22	PG 64-22	PG 64-22	
RAP % (Max)	10	10	10	
Design Air Voids	4.0%	4.0%	4.0%	
	@ Ndes=90	@ Ndes=90	@ Ndes=90	
Mix Comp(Gradation)	IL 9.5	IL 19.0	IL 9.5	
Friction Aggregate	Mix D	N. A.	Mix C	

G. N. -408B

WHEN USING SUPERPAVE MIXTURES, THE INCIDENTAL BITUMINOUS SURFACING SHALL BE COMPACTED AS REQUIRED BY THE SPECIFICATIONS FOR DESIGN NUMBER OF GYRATIONS BEING USED,

AT THE FOLLOWING LOCATIONS: ALL SIDESTREETS INCLUDED WITHIN THE JOB LIMITS.

G. N. -440B

THE EXISTING TIE BARS BETWEEN THE EXISTING PAVEMENT AND EXISTING MEDIANS, GUTTERS AND/OR COMBINATION CURB AND GUTTERS THAT ARE FOUND SUITABLE FOR REUSE SHALL BE CLEANED, STRAIGHTENED AND INCORPORATED INTO THE NEW CONSTRUCTION. ANY EXISTING TIE BARS THAT ARE FOUND UNSUITABLE TO BE INCORPORATED INTO THE PROPOSED CONSTRUCTION DUE TO EXCESSIVE RUSTING OR DISTRESS SHALL BE REMOVED FLUSH WITH THE FACE OF THE EXISTING CONCRETE AND DISPOSED OF OUTSIDE THE LIMITS OF THE RIGHT-OF-WAY IN ACCORDANCE WITH ARTICLE 202.03 OF THE STANDARD SPECIFICATIONS.

THIS WORK WILL NOT BE PAID FOR SEPARATELY BUT SHALL BE CONSIDERED INCLUDED IN THE VARIOUS REMOVAL PAY ITEMS AND NO ADDITIONAL COMPENSATION WILL BE ALLOWED.

G. N. -442B -- PATCHING SCHEDULES

THE PATCHING SCHEDULES INCLUDED IN THE PLANS REPRESENT THE BEST INFORMATION AVAILABLE AT THE TIME OF COMPLETION OF THE PLANS FOR LETTING. VARIATIONS IN LOCATION AND SIZES OF BOTH FULL-DEPTH AND PARTIAL-DEPTH PATCHES MAY OCCUR.

G. N. -442C -- PARTIAL DEPTH PATCHING DIMENSIONS

FOR PARTIAL DEPTH PAVEMENT PATCHING, THE MINIMUM SIZE OF ANY PATCH SHALL BE 4 FT BY 4 FT. IF THE REPAIR OF ANY SMALLER AREAS IS REQUIRED, THAT WORK SHALL BE DESIGNATED AS PAVEMENT CLEANING AND WILL BE PAID FOR IN ACCORDANCE WITH ARTICLE 109.04.

F.A.P. RTE.	SECTION	COUNTY	TOTAL SHEETS	SHEET NO.
716	130(R,R-1)RS	MACON	36	4

CONTRACT NO. 90929

GENERAL NOTES (Cont'd)

G. N. -667

THE RESIDENT ENGINEER SHALL CONTACT THE PROGRAM DEVELOPMENT CHIEF OF SURVEYS PRIOR TO THE PRE-CONSTRUCTION CONFERENCE FOR INSTRUCTION AS TO SETTING OF TEMPORARY OR PERMANENT TIES FOR CENTERLINE ALIGNMENT CONTROL SURVEY MARKERS AND TO DETERMINE IF IT WILL BE NECESSARY FOR THE CONTRACTOR TO HIRE AN ILLINOIS LAND SURVEYOR.

G. N. -703A

SHORT TERM PAVEMENT MARKING SHALL BE APPLIED TO THE PAVEMENT AFTER ANY OF THE FOLLOWING: PLACING BITUMINOUS MATERIALS (PRIME COAT), LEVELING BINDER (MACHINE METHOD), BINDER AND SURFACE COURSES. SHORT TERM PAVEMENT MARKING PLACED ON THE SURFACE, SHALL COINCIDE WITH THE FINAL PAVEMENT STRIPING. SHORT TERM PAVEMENT MARKING PLACED PRIOR TO THE SURFACE SHALL COINCIDE WITH THE EXISTING PAVEMENT MARKINGS. USE 4 FEET PER 40 FEET (OR 10% PER STATION).

G. N. -1004.01

COARSE AGGREGATE GRADATION CA-10 MAY BE USED WHENEVER COARSE AGGREGATE CA-6 IS SPECIFIED IN THE STANDARD SPECIFICATIONS.

G. N. -1004.03

REVISE ARTICLE 1004.03 (c) NOTE 5/ OF THE STANDARD SPECIFICATIONS TO READ:

'5/ GRADATION CA-16 SHALL BE USED IN LIEU OF CA-13 WHEN THE SURFACE COURSE IS LESS THAN 1 3/4 INCHES IN THICKNESS. CA-13 OR CA-16 MAY BE USED WHEN THE SURFACE COURSE IS 1 3/4 INCHES OR MORE IN THICKNESS.'

SUMMARY OF QUANTITIES

F.A.P. RTE.	SECTION	COUNTY	TOTAL SHEETS	SHEET NO.
716	130(R,R-URS)	MACON	36	5

CONTRACT NO. 90929

LOCATION OF WORK: URBAN
 STA. 57+07.00
 TO STA. 157+37.70

CONSTRUCTION TYPE CODE: 80% FED.
 20% STATE
 I000
 TOTAL
 QUANTITY

CODE NO	ITEM	UNIT	TOTAL QUANTITY
40600100	BITUMINOUS MATERIALS (PRIME COAT)	GALLON	13,166.0
40600300	AGGREGATE (PRIME COAT)	TON	265.0
40600895	CONSTRUCTING TEST STRIP	EACH	1.0
40600985	PORTLAND CEMENT CONCRETE SURFACE REMOVAL - BUTT JOINT	SQ YD	<u>2553.0</u>
40600990	TEMPORARY RAMP	SQ YD	344.0
40800010	BITUMINOUS MATERIALS (PRIME COAT)	GALLON	<u>409.0</u>
40800030	AGGREGATE (PRIME COAT)	TON	<u>0.0</u>
40800040	INCIDENTAL BITUMINOUS SURFACING	TON	<u>326.0</u>
44001700	COMBINATION CONCRETE CURB AND GUTTER REMOVAL AND REPLACEMENT	FOOT	50.0
44003510	MEDIAN REMOVAL PARTIAL DEPTH	SQ FT	63,005.0
44004400	PAVEMENT REMOVAL (SPECIAL)	SQ YD	796.0
44201761	CLASS D PATCHES, TYPE I, 10 INCH	SQ YD	12.0
44201765	CLASS D PATCHES, TYPE II, 10 INCH	SQ YD	32.0
44201771	CLASS D PATCHES, TYPE IV, 10 INCH	SQ YD	54.0
60255500	MANHOLES TO BE ADJUSTED	EACH	15.0
60265700	VALVE VAULTS TO BE ADJUSTED	EACH	5.0
60266600	VALVE BOXES TO BE ADJUSTED	EACH	18.0
60300105	FRAMES AND GRATES TO BE ADJUSTED	EACH	144.0
60401810	GRATES, TYPE 3	EACH	44.0
60622354	CONCRETE MEDIAN, TYPE SM-6 (DOWELLED)	SQ FT	312.0
60624610	CORRUGATED MEDIAN (DOWELLED)	SQ FT	10,752.0
60625900	P. C. C. RAMPED MEDIAN TERMINAL	EACH	14.0

REV 1

SUMMARY OF QUANTITIES

F.A.P. RTE.	SECTION	COUNTY	TOTAL SHEETS	SHEET NO.
716	130(R,R-1)RS	MACON	36	6

CONTRACT NO. 90929

LOCATION OF WORK:

URBAN
 STA. 57+07.00
 TO STA. 157+37.70
 80% FED.
 20% STATE

CONSTRUCTION TYPE CODE:

I000
 TOTAL
 QUANTITY

CODE NO	ITEM	UNIT	QUANTITY
66700110	PERMANENT SURVEY MARKERS TO BE ADJUSTED	EACH	5.0
67000400	ENGINEER'S FIELD OFFICE, TYPE A	CAL MO	4.0
67100100	MOBILIZATION	L SUM	1.0
70102630	TRAFFIC CONTROL AND PROTECTION, STANDARD 701601	L SUM	1.0
70102632	TRAFFIC CONTROL AND PROTECTION, STANDARD 701602	L SUM	1.0
70102635	TRAFFIC CONTROL AND PROTECTION, STANDARD 701701	L SUM	1.0
70300100	SHORT-TERM PAVEMENT MARKING	FOOT	8,131.0
70300625	TEMPORARY PAINT PAVEMENT MARKING LINE 4"	FOOT	26,288.0
70300640	TEMPORARY PAINT PAVEMENT MARKING LINE 8"	FOOT	780.0
70300645	TEMPORARY PAINT PAVEMENT MARKING LINE 12"	FOOT	208.0
70301000	WORK ZONE PAVEMENT MARKING REMOVAL	SQ FT	1,275.0
*78000100	THERMOPLASTIC PAVEMENT MARKING - LETTERS AND SYMBOLS	SQ FT	827.0
*78000200	THERMOPLASTIC PAVEMENT MARKING - LINE 4"	FOOT	26,288.0
*78000600	THERMOPLASTIC PAVEMENT MARKING - LINE 12"	FOOT	780.0
*78000650	THERMOPLASTIC PAVEMENT MARKING - LINE 24"	FOOT	208.0
88600100	DETECTOR LOOP, TYPE I	FOOT	1,056.0
X4066428	BITUMINOUS CONCRETE SURFACE COURSE, SUPERPAVE, MIX "D", N90	TON	6,285.0
X4066775	LEVELING BINDER (MACHINE METHOD), SUPERPAVE N90	TON	3,325.0
X7015005	CHANGEABLE MESSAGE SIGNS	CALDA	28.0
Z0004800	BITUMINOUS MIXTURE FOR PATCHING	TON	134.0
Z0070100	SURVEY MONUMENT COVER ASSEMBLY	EACH	5.0
*SPECIALTY ITEMS			

Rev.

F.A.P. RTE.	SECTION	COUNTY	TOTAL SHEETS	SHEET NO.
716	130(R,R-1)RS	MACON	36	7

CONTRACT NO. 90929

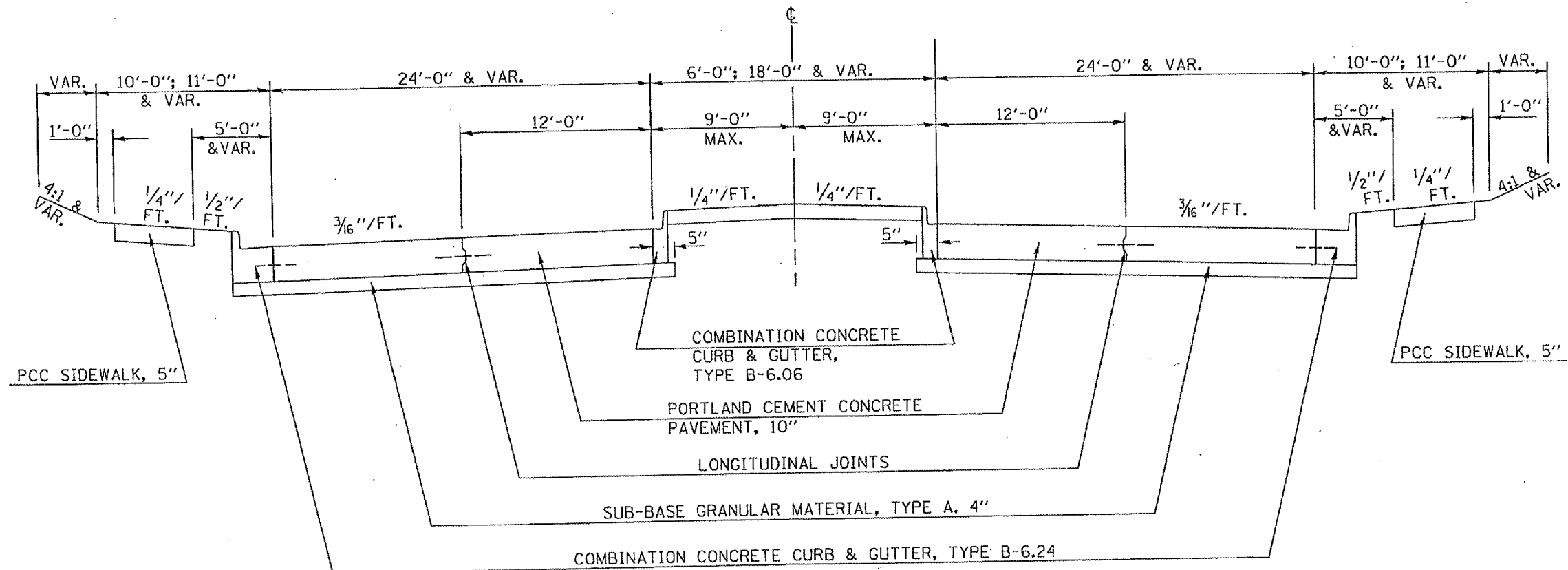
EXISTING TYPICAL CROSS SECTION

S. B. I. ROUTE 48

STATION 57+07.00 TO STATION 89+50.93

GRAND AVENUE

STATION 129+19.40 TO STATION 143+60.87

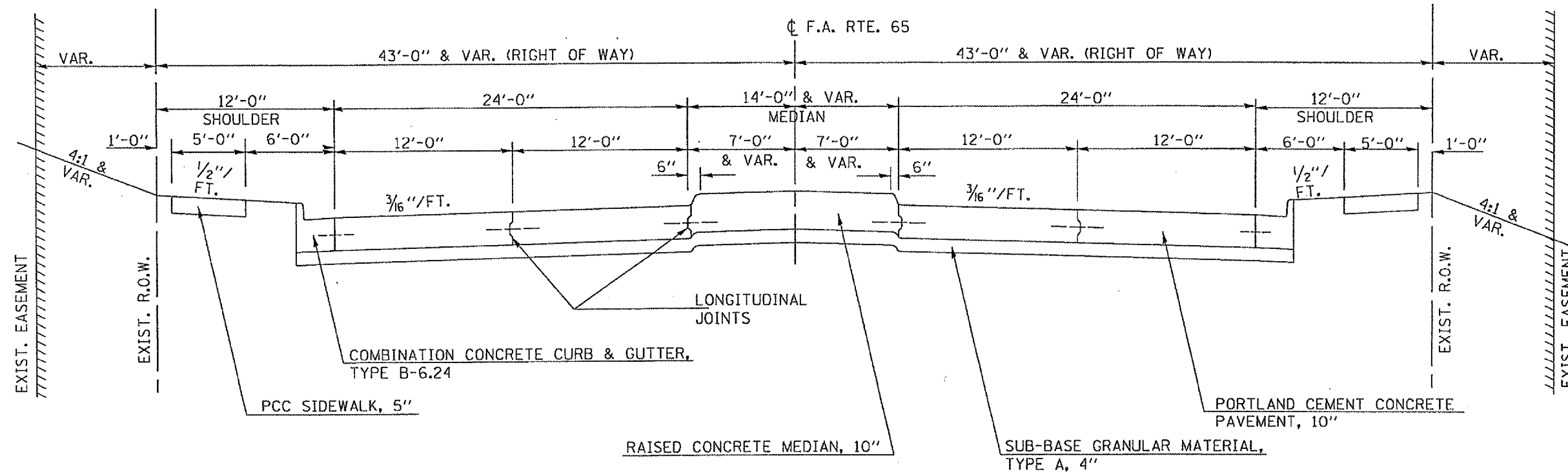


F.A.P. RTE.	SECTION	COUNTY	TOTAL SHEETS	SHEET NO.
716	130(R,R-1)RS	MACON	36	8

CONTRACT NO. 90929

EXISTING TYPICAL CROSS SECTION

STATION TO STATION
 89+50.93 TO 128+97.00 RT. & 129+30.00 LT.
 136+82.80 TO 151+29.18 RT. & 152+64.50 LT.

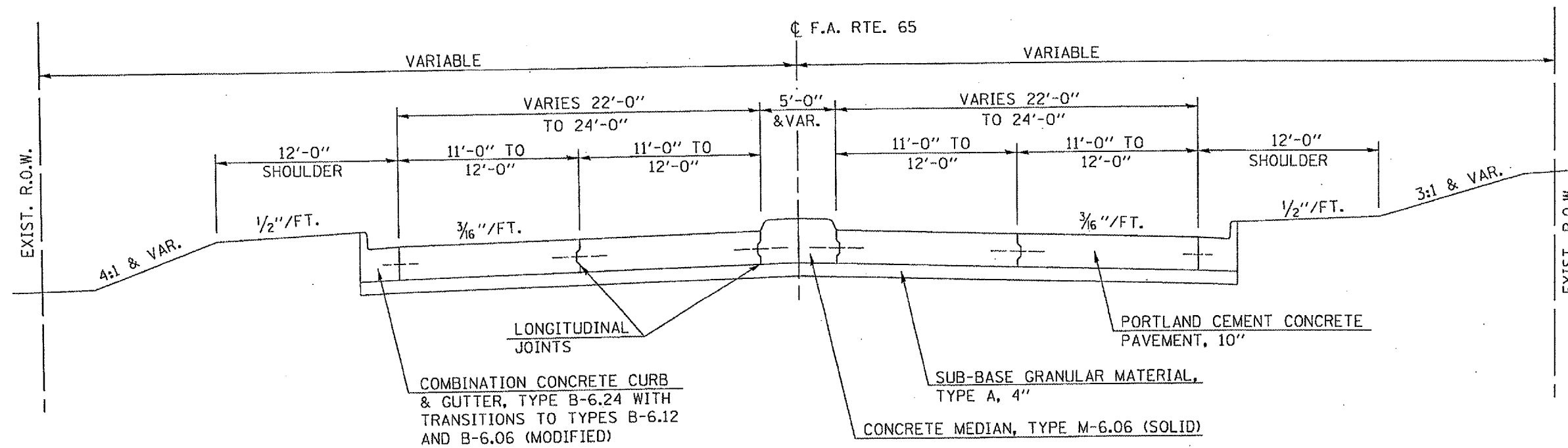


F.A.P. RTE.	SECTION	COUNTY	TOTAL SHEETS	SHEET NO.
716	130(R,R-1)RS	MACON	36	9

CONTRACT NO. 90929

EXISTING TYPICAL CROSS SECTION

STATION TO STATION
 128+97.00 RT. & 129+30.00 LT. 130+78.00
 132+85.00 134+71.20

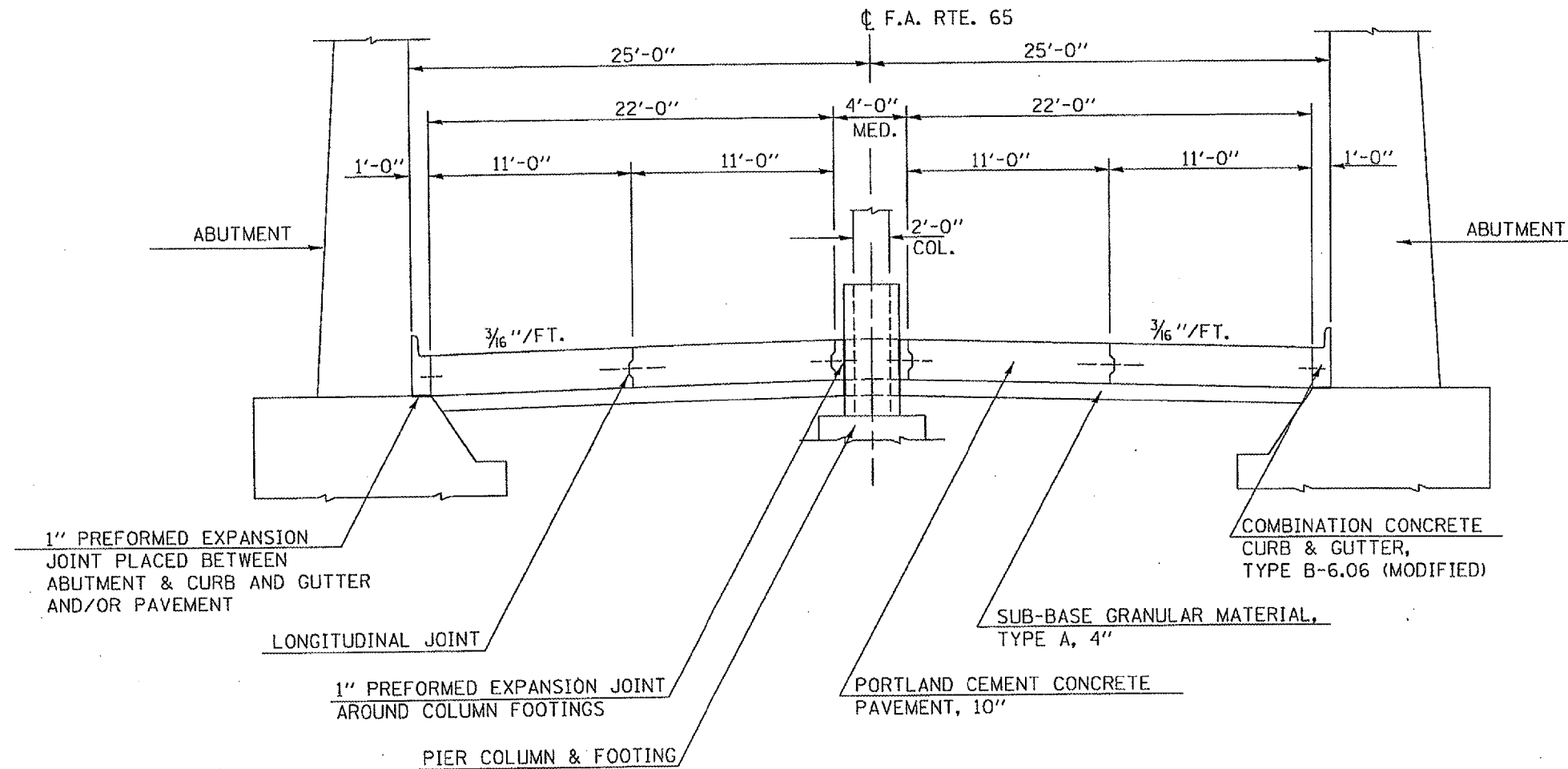


F.A.P. RTE.	SECTION	COUNTY	TOTAL SHEETS	SHEET NO.
716	130(R,R-1)RS	MACON	36	10

CONTRACT NO. 90929

EXISTING TYPICAL CROSS SECTION

STATION TO STATION
 130+78.00 132+85.00
 BRIDGE OMISSION:
 134+71.20 136+82.80



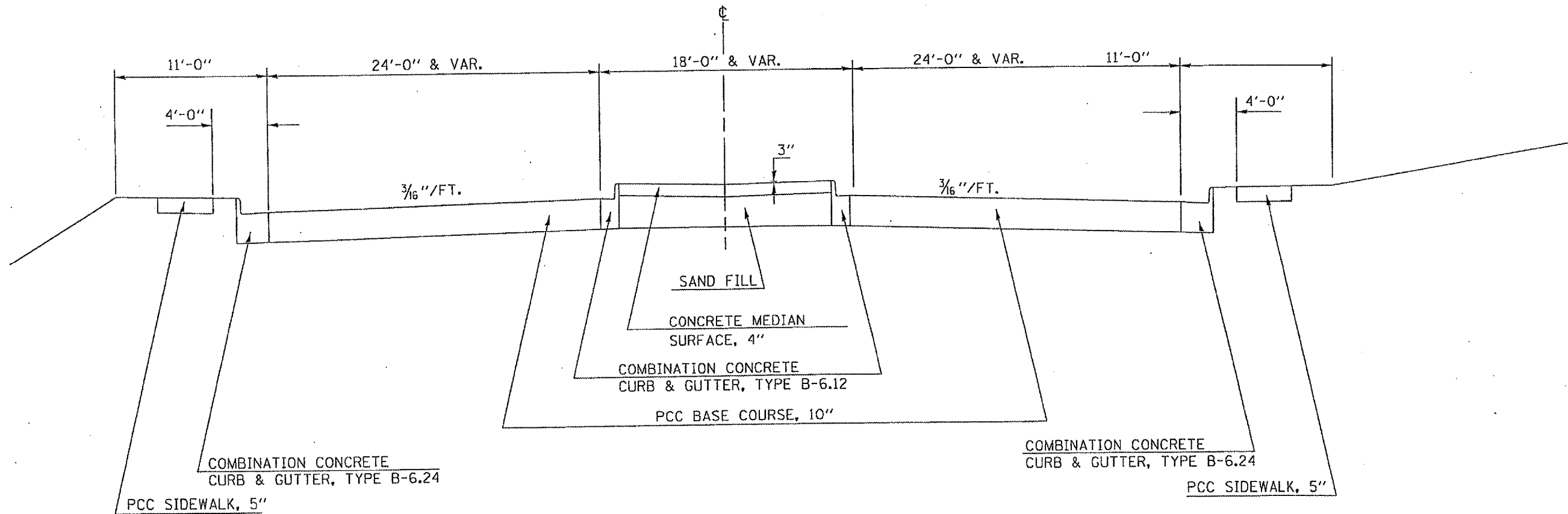
F.A.P. RTE.	SECTION	COUNTY	TOTAL SHEETS	SHEET NO.
716	130(R,R-1)RS	MACON	36	11

CONTRACT NO. 90929

EXISTING TYPICAL CROSS SECTION

OAKLAND AVENUE

STATION 151+29.18 TO STATION 152+53.60 RT. & 152+64.50 LT.



F.A.P. RTE.	SECTION	COUNTY	TOTAL SHEETS	SHEET NO.
716	130(R,R-1)RS	MACON	36	12

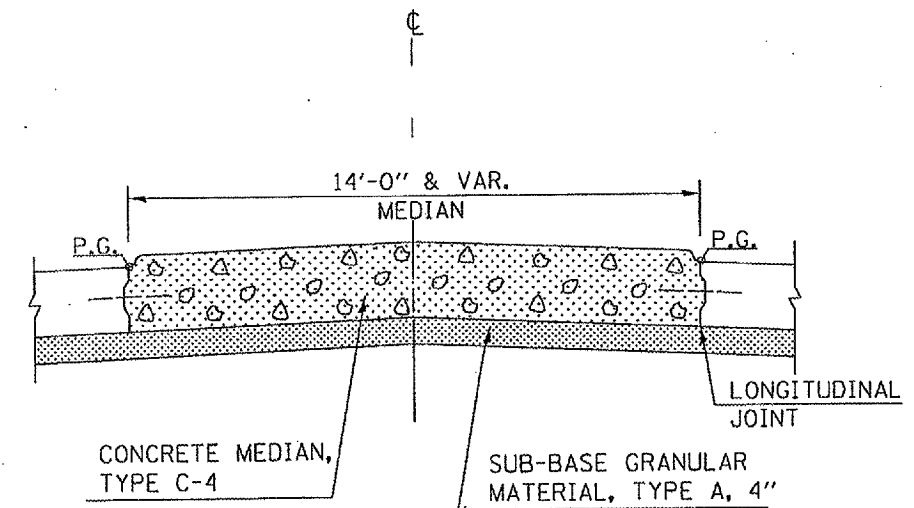
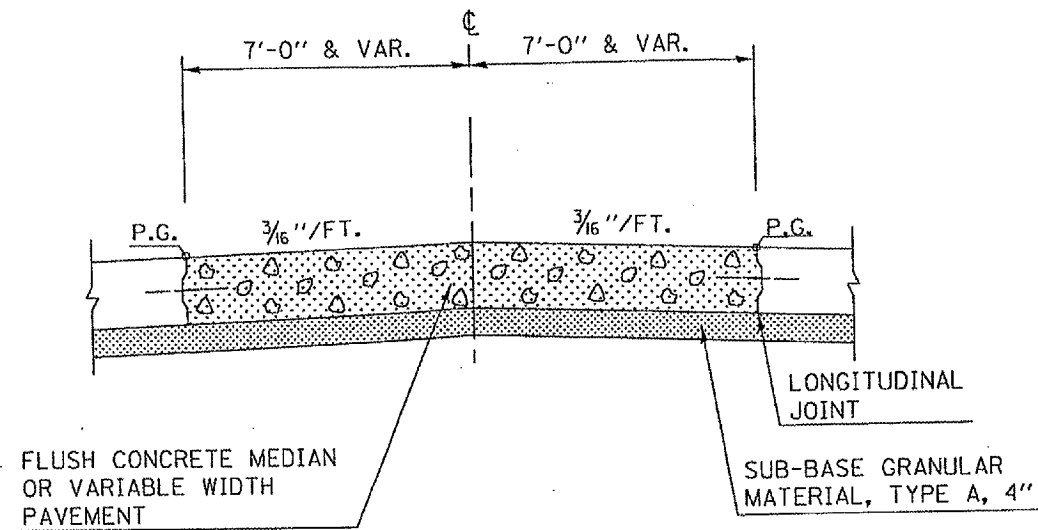
CONTRACT NO. 90929

EXISTING DETAIL OF FLUSH CONCRETE MEDIAN

STATION	TO	STATION
86+79.73		89+30.81
91+20.00		92+33.00
97+81.00		98+81.00
104+39.00		105+39.00
110+53.12		114+74.16
114+74.16		118+91.40
124+25.00		125+25.00
128+15.00		129+05.20
133+74.35		134+71.20
143+44.00		144+44.00

EXISTING DETAIL OF CONCRETE MEDIAN

STATION	TO	STATION
86+87.88		88+52.94
88+99.61		90+16.77
108+73.00		110+79.80
111+48.16		117+95.61
118+64.68		121+02.00
128+75.31		130+38.54
133+31.47		133+98.00
150+91.00		152+89.48
153+92.00		154+50.00

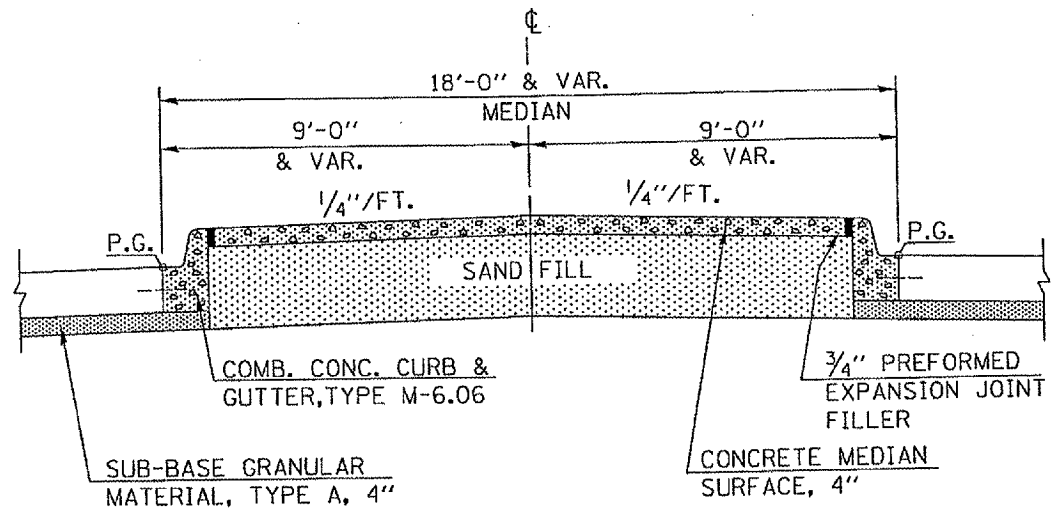


F.A.P. RTE.	SECTION	COUNTY	TOTAL SHEETS	SHEET NO.
716	130(R,R-I)RS	MACON	36	13

CONTRACT NO. 90929

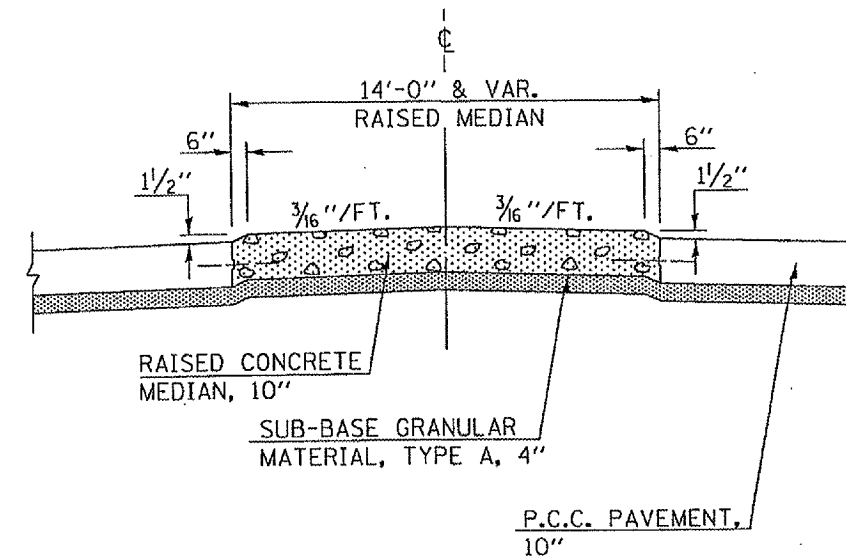
EXISTING DETAIL OF BARRIER MEDIAN

STATION 86+50.93 TO STATION 87+23.39



EXISTING DETAIL OF RAISED PCC MEDIAN, 10"

STATION	TO	STATION
92+33.00		97+00.00
97+00.00		97+81.00
98+81.00		103+00.00
103+00.00		104+39.00
105+39.00		109+00.00
109+00.00		110+00.00
121+00.00		124+25.00
125+25.00		127+00.00
127+00.00		128+15.00
136+82.80		139+00.00
139+00.00		143+44.00
144+00.00		145+00.00
145+00.00		151+00.00



F.A.P. RTE.	SECTION	COUNTY	TOTAL SHEETS	SHEET NO.
716	130(R,R-1)RS	MACON	36	14

CONTRACT NO. 90929

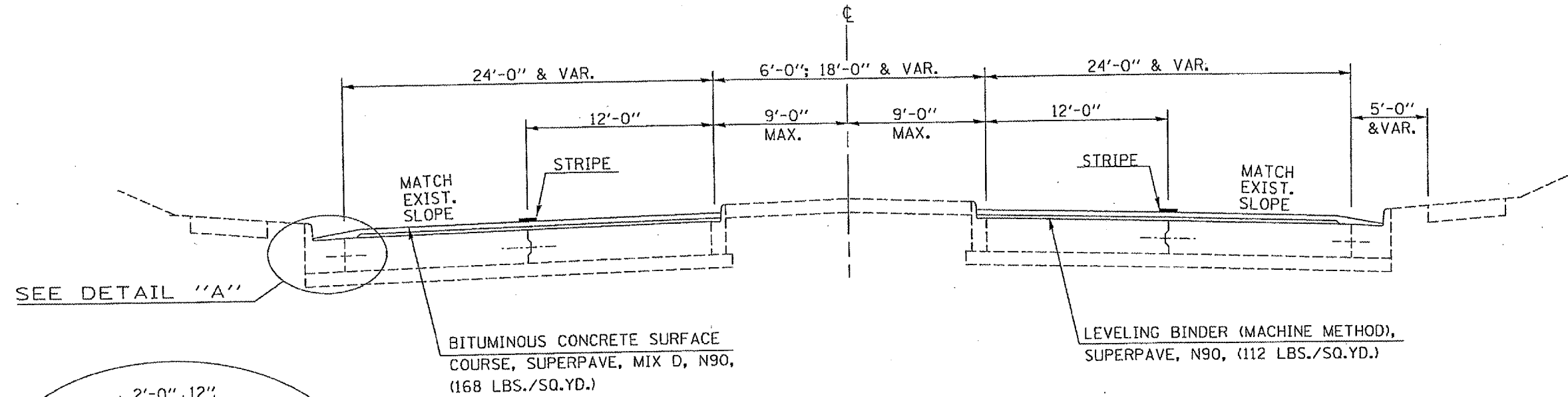
PROPOSED TYPICAL CROSS SECTION ①

S. B. I. ROUTE 48

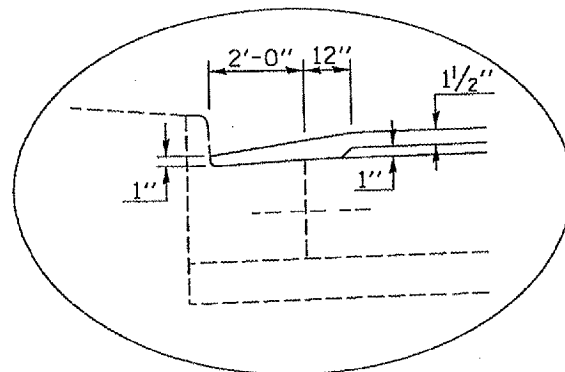
STATION TO STATION
57+07.00 89+50.93 ②

GRAND AVENUE

STATION TO STATION
129+19.40 143+60.87



SEE DETAIL "A"



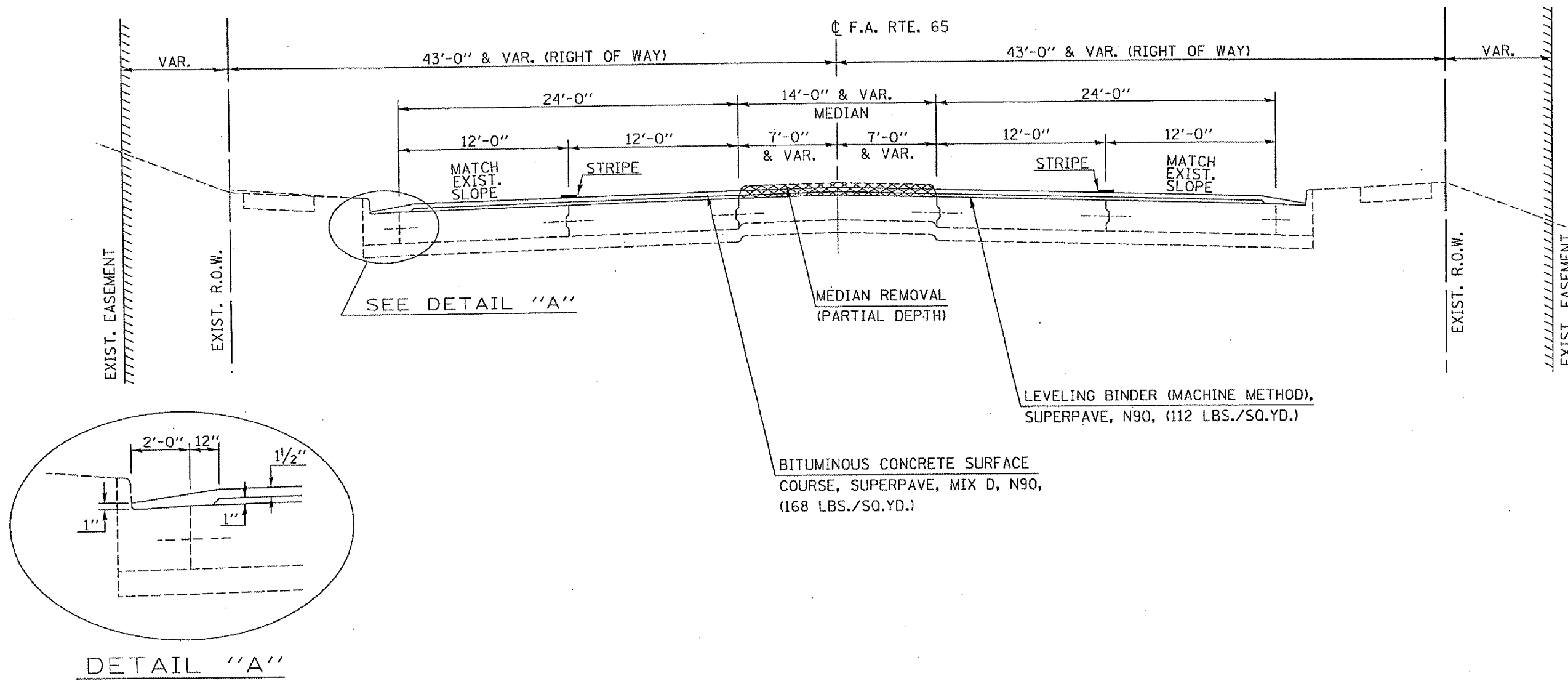
DETAIL "A"

F.A.P. RTE.	SECTION	COUNTY	TOTAL SHEETS	SHEET NO.
716	130(R,R-1)RS	MACON	36	15

CONTRACT NO. 90929

PROPOSED TYPICAL CROSS SECTION 2

	STATION	TO	STATION
1	89+50.93		128+97.00 RT. & 129+30.00 LT. 3
4	136+82.80		151+29.18 RT. & 152+64.50 LT. 5

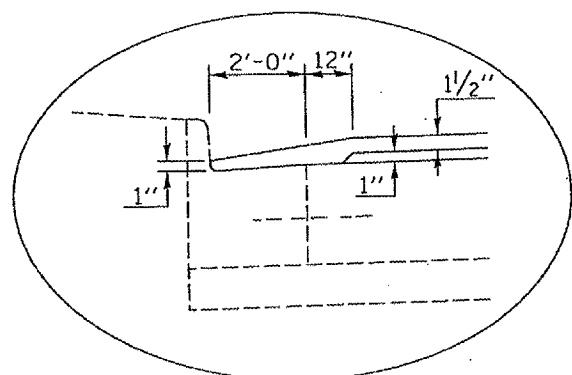
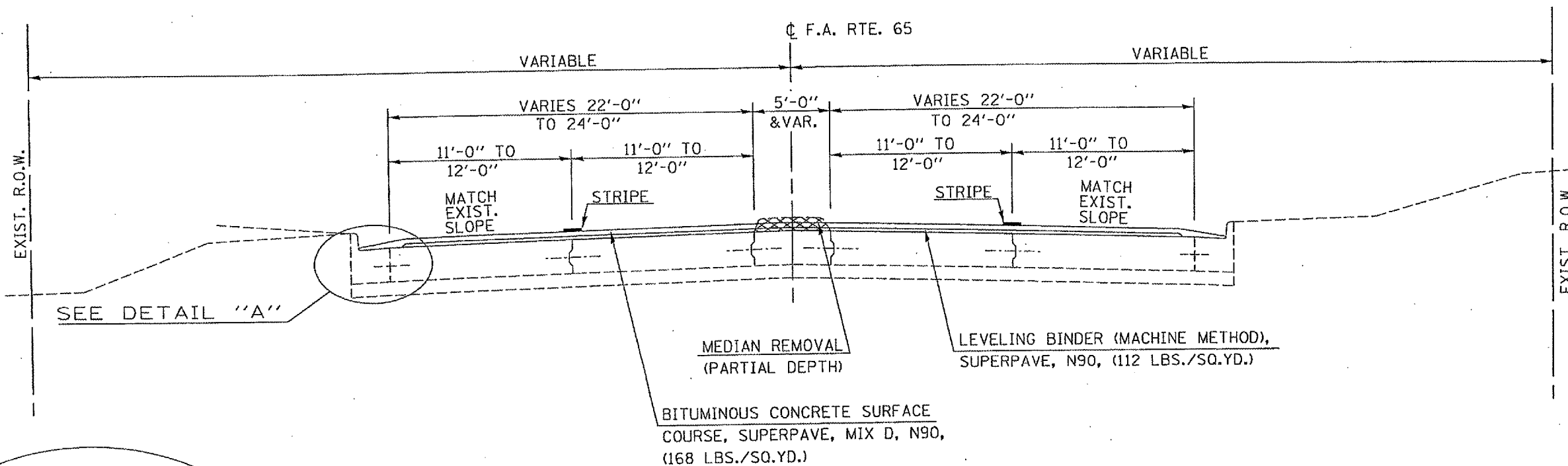


F.A.P. RTE.	SECTION	COUNTY	TOTAL SHEETS	SHEET NO.
716	130(R,R-1)RS	MACON	36	16

CONTRACT NO. 90929

PROPOSED TYPICAL CROSS SECTION 3

	STATION	TO	STATION	
2	128+97.00 RT. & 129+30.00 LT.		130+78.00	4
4	132+85.00		134+71.20	4



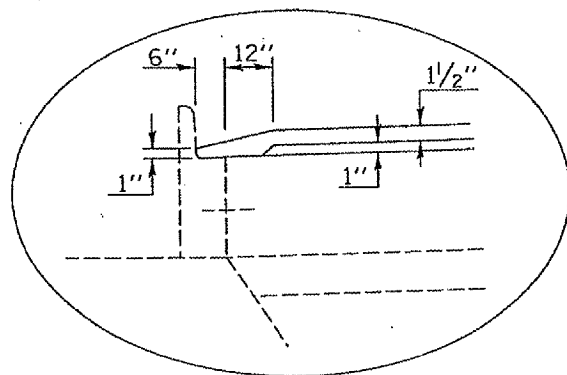
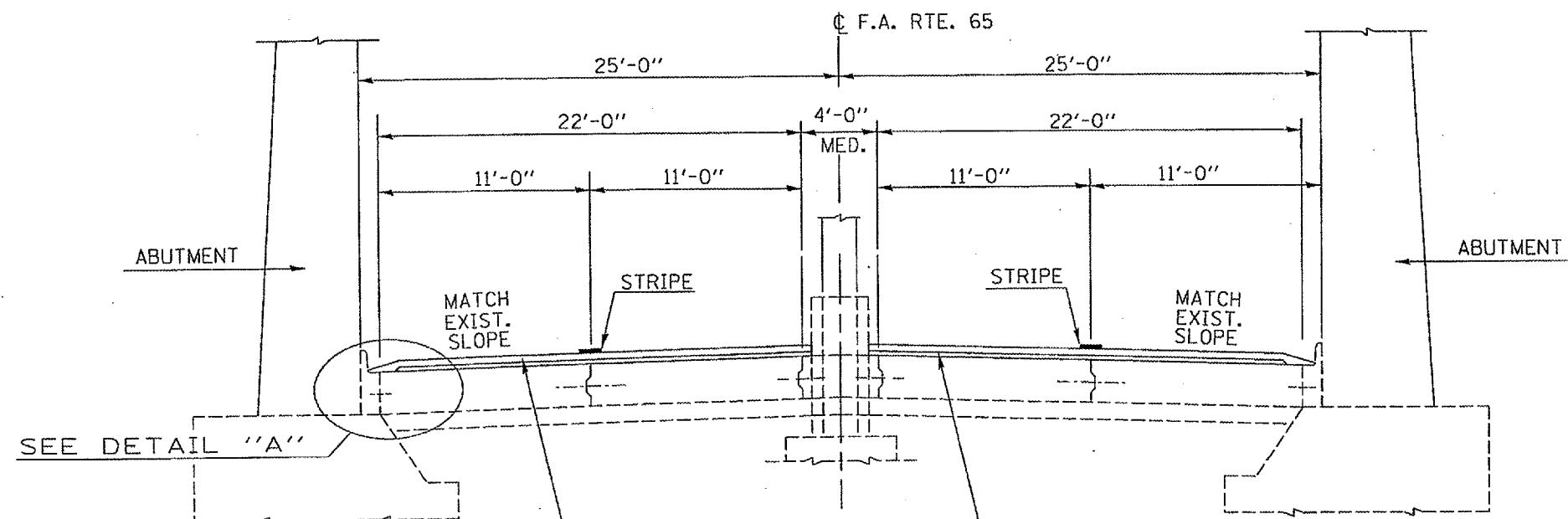
DETAIL "A"

F.A.P. RTE.	SECTION	COUNTY	TOTAL SHEETS	SHEET NO.
716	130(R,R-URS)	MACON	36	17

CONTRACT NO. 90929

PROPOSED TYPICAL CROSS SECTION (4)

STATION TO STATION
 (3) 130+78.00 TO 132+85.00 (3)
 BRIDGE OMISSION:
 (3) 134+71.20 TO 136+82.80 (2)



DETAIL "A"

BITUMINOUS CONCRETE SURFACE COURSE, SUPERPAVE, MIX D, N90, (168 LBS./SQ.YD.)

LEVELING BINDER (MACHINE METHOD), SUPERPAVE, N90, (112 LBS./SQ.YD.)

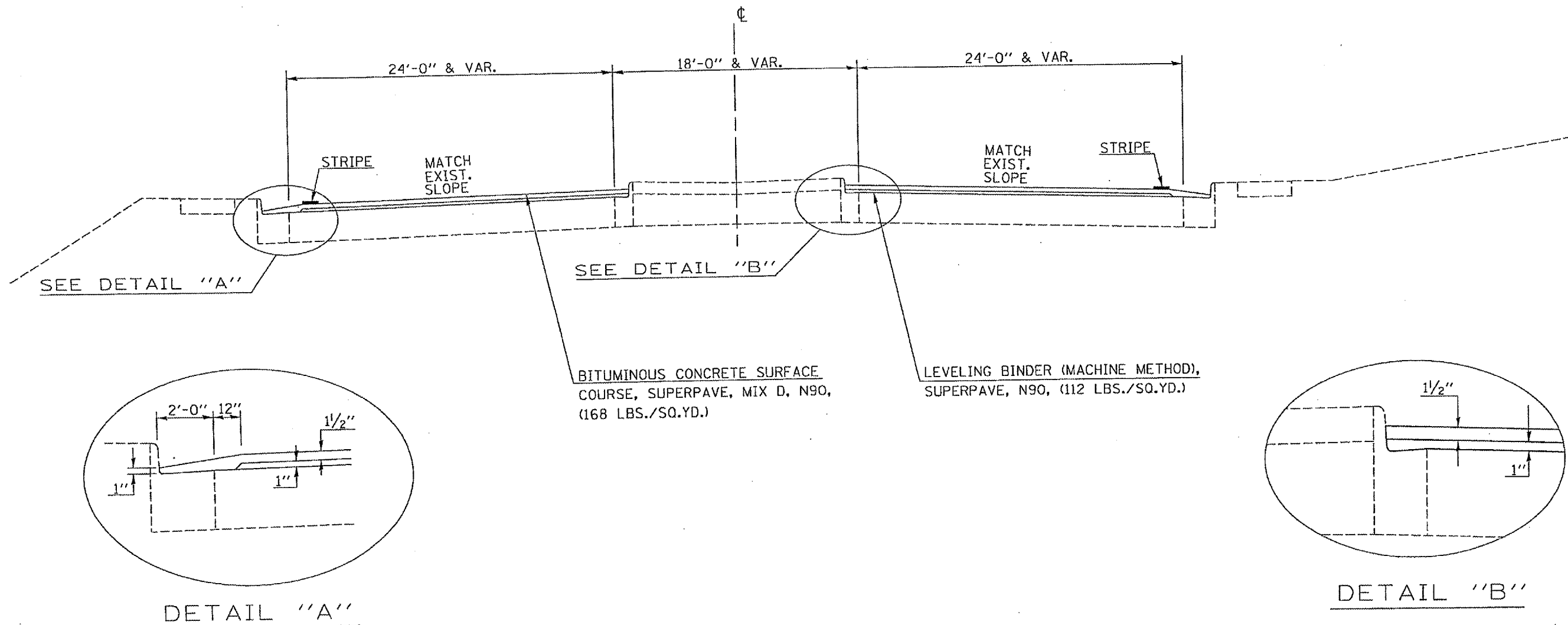
F.A.P. RTE.	SECTION	COUNTY	TOTAL SHEETS	SHEET NO.
716	130(R,R-1)RS	MACON	36	18

CONTRACT NO. 90929

PROPOSED TYPICAL CROSS SECTION ⑤

OAKLAND AVENUE

② STATION 151+29.18 TO STATION 152+53.60 RT. & 152+64.50 LT.

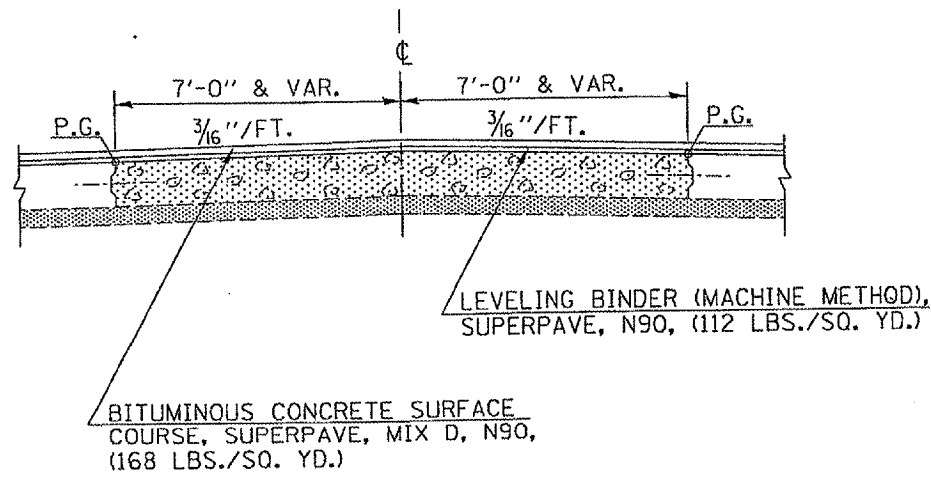


F.A.P. RTE.	SECTION	COUNTY	TOTAL SHEETS	SHEET NO.
716	130(R,R-1)RS	MACON	36	19

CONTRACT NO. 90929

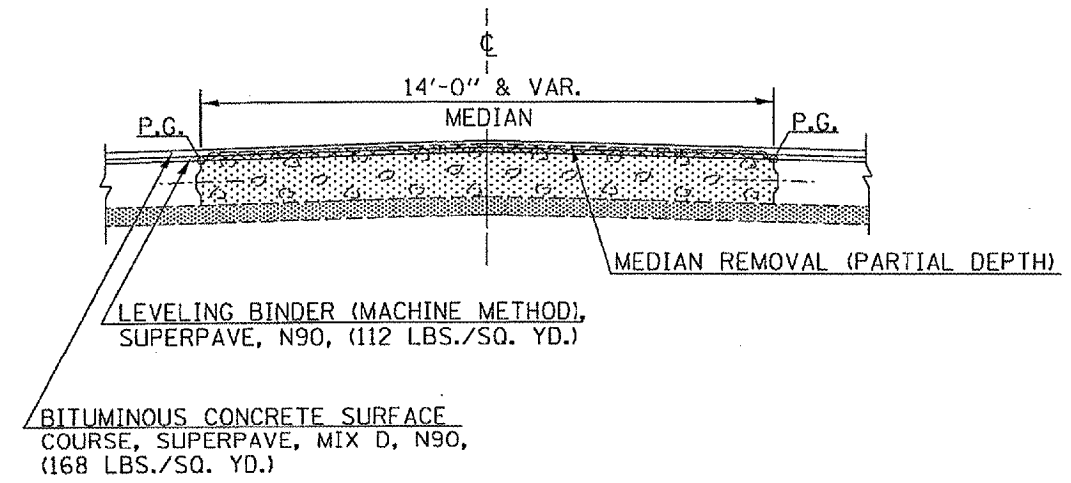
PROPOSED DETAIL OF FLUSH CONCRETE MEDIAN

STATION	TO	STATION
86+79.73		89+30.81
91+20.00		92+33.00
97+81.00		98+81.00
104+39.00		105+39.00
110+53.12		114+74.16
114+74.16		118+91.40
124+25.00		125+25.00
128+15.00		129+05.20
133+74.35		134+71.20
143+44.00		144+44.00



PROPOSED DETAIL OF CONCRETE MEDIAN

STATION	TO	STATION
86+87.88		88+52.94
88+99.61		90+16.77
108+73.00		110+79.80
111+48.16		117+95.61
118+64.68		121+02.00
128+75.31		130+38.54
133+31.47		133+98.00
150+91.00		152+89.48
153+92.00		154+50.00

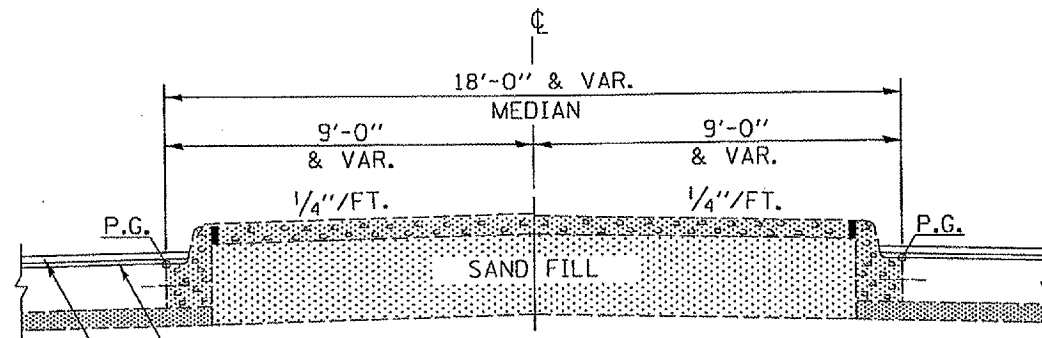


F.A.P. RTE.	SECTION	COUNTY	TOTAL SHEETS	SHEET NO.
716	130(R,R-DRS)	MACON	36	20

CONTRACT NO. 90929

PROPOSED DETAIL OF BARRIER MEDIAN

STATION 86+50.93 TO STATION 87+23.39

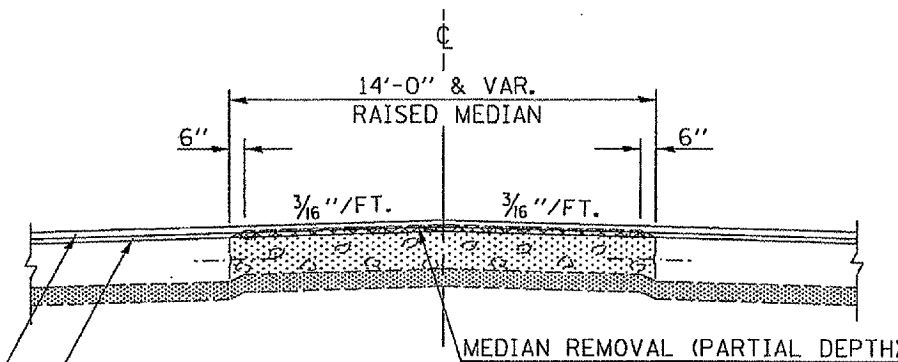


LEVELING BINDER (MACHINE METHOD),
SUPERPAVE, N90, (112 LBS./SQ. YD.)

BITUMINOUS CONCRETE SURFACE
COURSE, SUPERPAVE, MIX D, N90,
(168 LBS./SQ. YD.)

PROPOSED DETAIL OF RAISED PCC MEDIAN, 10" (PARTIAL DEPTH REMOVAL)

STATION	TO	STATION
92+33.00		97+00.00
97+00.00		97+81.00
98+81.00		103+00.00
103+00.00		104+39.00
105+39.00		109+00.00
109+00.00		110+00.00
121+00.00		124+25.00
125+25.00		127+00.00
127+00.00		128+15.00
136+82.80		139+00.00
139+00.00		143+44.00
144+00.00		145+00.00
145+00.00		151+00.00



LEVELING BINDER (MACHINE METHOD),
SUPERPAVE, N90, (112 LBS./SQ. YD.)

BITUMINOUS CONCRETE SURFACE
COURSE, SUPERPAVE, MIX D, N90,
(168 LBS./SQ. YD.)

SCHEDULE OF QUANTITIES

F.A.P. RTE.	SECTION	COUNTY	TOTAL SHEETS	SHEET NO.
716	130(R,R-1)RS	MACON	36	21

CONTRACT NO. 90929

COMBINATION CURB & GUTTER REMOVE & REPLACE

LOCATION	LENGTH (LIN FT)
SOUTH CUSHING NB	50'
58+40 S. TO KING STREET	200'
KING STREET N. TO 58+40	200'
* KING STREET DISTANCES ARE APPROXIMATES. INTERMITTENT REPAIR THROUGH OUT THAT SECTION*	
TOTAL QUANTITIES	450.0 LIN FT

MEDIAN REMOVAL PARTIAL DEPTH

STA.	TO	STA.	SQ. FT.
108+73		110+79.8	2176
111+48.16		115+00	2150
115+00		117+95.6	1425
118+64.63		121+02	2603
128+75.31		130+38.5	1686
133+31.47		133+98	382
150+91		152+89.5	3734
153+92		154+50	330

TOTAL QUANTITIES **14486.0**
(SQ FT)

TOTAL MEDIAN REMOVAL (PD) **63005.0**
(SQ FT)

MEDIAN REMOVAL PARTIAL DEPTH

STA.	TO	STA.	SQ. FT.
92+33		97+00	6538
97+00		97+81	1134
98+81		103+00	5866
103+00		104+39	1946
105+39		109+00	4916
109+00		110+00	407
121+00		124+25	4550
125+25		127+00	2450
127+00		128+15	1610
136+82.8		139+00	3041
139+00		143+44	6216
144+00		145+00	784
145+00		151+00	9061

TOTAL QUANTITIES **48519.0**
(SQ FT)

TEMPORARY RAMP BITUMINOUS

57+07 START OF JOB
5' X 48' / 9 = 26.7 SQYD

INTERSECTION OF GRAND AVENUE
5' X 110' / 9 61.1 SQYD X 2 = 122.2 SQYD

INTERSECTION OF RAVINA PARK ROAD
5' X 110' / 9 = 61.1 SQYD

RT 131+00 RAILROAD OVERHEAD
5' X 24' / 9 = 13.3 SQYD

LT 131+45 RAILROAD OVERHEAD
5' X 24' / 9 = 13.3 SQYD

RT 132+15 RAILROAD OVERHEAD
5' X 24' / 9 = 13.3 SQYD

TEMPORARY RAMP BITUMINOUS (Cont' d)

LT 132+50 RAILROAD OVERHEAD
5' X 24' / 9 = 13.3 SQYD

134+71.20 MAINLINE BRIDGE
5' X 48' / 9 = 26.7 SQYD

136+82.80 MAINLINE BRIDGE
5' X 48' / 9 = 26.7 SQYD

157+37.70 END OF JOB
5' X 48' / 9 = 26.7 SQYD

TOTAL QUANTITY **344.0 SQYD**

SCHEDULE OF QUANTITIES

F.A.P. RTE.	SECTION	COUNTY	TOTAL SHEETS	SHEET NO.
716	130(R,R-D)RS	MACON	36	22

CONTRACT NO. 90929

MANHOLE ADJUST

<u>LOCATION</u>	<u>STATION</u>
RT	57+51
RT	58+27
RT	60+31
RT	65+31
CL	66+71
RT	77+15
LT	87+44
CL	90+58
LT	111+18
LT	114+75
LT	117+75
LT	118+87
LT	138+16
LT	139+60
LT	147+63
TOTAL QUANTITY	15.0 EACH

VALVE BOX ADJUST

<u>O/S</u>	<u>LT OR RT</u>	<u>STATION</u>
	LT	59+98
	RT	77+05
	RT	84+78
	RT	88+61
36'	RT	91+70
29'	RT	91+72
36'	RT	91+90
29'	RT	91+90
29'	RT	92+00
26'	RT	104+80
25'	RT	104+90
25'	RT	111+06
25'	RT	111+06
22'	RT	116+40
30'	RT	117+19
15'	RT	118+42
35'	RT	133+71.2
27.5'	RT	133+81.2
TOTAL QUANTITIES		18.0 EACH

VALVE VAULT ADJUST

<u>LT OR RT</u>	<u>STATION</u>
LT	60+19
LT	60+24
RT	76+98
23' RT	91+94
36' RT	91+94
TOTAL QUANTITY	5.0 EACH

F.A.P. RTE.	SECTION	COUNTY	TOTAL SHEETS	SHEET NO.
716	130(R,R-1)RS	MACON	36	23

CONTRACT NO. 90929

SCHEDULE OF QUANTITIES

FRAME & GRATE ADJUST

O/S	STA	TYPE
RT	57+45	TY C, TY 3 F & G
LT	57+75	TY C, TY 3 F & G
RT	58+80	TY C, TY 3 F & G
RT	59+75	TY C, TY 3 F & G
RT	61+64	TY C, TY 3 F & G
LT	61+66	TY A, TY 3 F & G
RT	63+83	TY C, TY 3 F & G
LT	64+00	TY C, TY 3 F & G
LT	65+77	TY C, TY 3 F & G
LT	66+71	TY C, TY 3 F & G
RT	67+49	TY C, TY 3 F & G
LT	67+55	TY C, TY 3 F & G
LT	69+30	TY C, TY 3 F & G
RT	69+30	TY C, TY 3 F & G
LT	70+10	TY A, TY 3 F & G
RT	70+10	TY C, TY 3 F & G
RT	71+20	TY A, TY 3 F & G
LT	71+50	TY C, TY 3 F & G
RT	73+00	TY C, TY 3 F & G
LT	74+20	TY C, TY 3 F & G
RT	74+25	TY C, TY 3 F & G
LT	75+20	TY C, TY 3 F & G
LT	78+60	TY C, TY 3 F & G
RT	78+85	TY C, TY 3 F & G
RT	79+33	TY C, TY 3 F & G
LT	79+40	TY C, TY 3 F & G
RT	79+93	TY C, TY 3 F & G
LT	80+17	TY C, TY 3 F & G
RT	80+30	TY C, TY 3 F & G
RT	80+80	TY C, TY 3 F & G
LT	81+23	TY C, TY 3 F & G
LT	82+00	TY C, TY 3 F & G
LT	82+75	TY C, TY 3 F & G
LT	83+25	TY C, TY 3 F & G
RT	83+44	TY C, TY 3 F & G
LT	83+75	TY C, TY 3 F & G
RT	84+03	TY C, TY 3 F & G
LT	84+25	TY C, TY 3 F & G

FRAME & GRATE ADJUST (Cont.)

O/S	STA	TYPE
RT	84+52	TY C, TY 3 F & G
LT	84+95	TY C, TY 3 F & G
RT	85+40	TY C, TY 3 F & G
LT	85+61	TY C, TY 3 F & G
RT	86+25	TY C, TY 3 F & G
LT	86+55	TY C, TY 3 F & G
RT	87+05	TY C, TY 3 F & G
LT	88+18	TY C, TY 3 F & G
RT	88+55	TY C, TY 3 F & G
RT	89+40	TY C, TY 3 F & G
LT	89+70	TY C, TY 3 F & G
LT	90+58	TY C, TY 3 F & G
RT	90+58	TY C, TY 3 F & G
LT	92+66	TY C, TY 11 F & G
RT	92+66	TY C, TY 11 F & G
RT	93+48	TY C, TY 11 F & G
LT	96+24	TY C, TY 11 F & G
RT	96+24	TY C, TY 11 F & G
LT	97+74	TY C, TY 11 F & G
RT	97+74	TY C, TY 11 F & G
LT	99+00	TY C, TY 11 F & G
LT	100+16	TY C, TY 11 F & G
LT	100+26	TY C, TY 11 F & G
LT	105+50	TY C, TY 11 F & G
LT	107+00	TY C, TY 11 F & G
RT	107+00	TY C, TY 11 F & G
LT	108+40	TY C, TY 11 F & G
RT	108+40	TY C, TY 11 F & G
LT	109+15	TY C, TY 11 F & G
RT	109+85	TY C, TY 11 F & G
LT	109+95	TY C, TY 11 F & G
LT	110+78	TY C, TY 11 F & G
LT	112+20	TY C, TY 11 F & G
LT	113+40	TY C, TY 11 F & G
RT	113+40	TY C, TY 11 F & G
LT	114+80	TY C, TY 11 F & G
RT	114+80	TY C, TY 11 F & G
LT	116+40	TY C, TY 11 F & G

FRAME & GRATE ADJUST (Cont.)

O/S	STA	TYPE
RT	116+40	TY C, TY 11 F & G
LT	116+95	TY C, TY 11 F & G
RT	116+95	TY C, TY 11 F & G
RT	118+50	TY C, TY 11 F & G
LT	119+47	TY C, TY 11 F & G
RT	120+00	TY C, TY 11 F & G
LT	121+35	TY C, TY 11 F & G
RT	121+50	TY C, TY 11 F & G
RT	123+08	TY C, TY 11 F & G
LT	123+20	TY C, TY 11 F & G
LT	123+69	TY C, TY 11 F & G
RT	123+78	TY C, TY 11 F & G
RT	124+48	TY C, TY 11 F & G
RT	124+58	TY C, TY 11 F & G
RT	125+72	TY C, TY 11 F & G
LT	125+82	TY C, TY 11 F & G
RT	125+82	TY C, TY 11 F & G
LT	126+95	TY C, TY 11 F & G
RT	126+95	TY C, TY 11 F & G
LT	128+00	TY C, TY 11 F & G
LT	128+10	TY C, TY 11 F & G
RT	128+10	TY C, TY 11 F & G
LT	129+02	TY C, TY 11 F & G
RT	129+42	TY C, TY 11 F & G
LT	129+95	TY C, TY 11 F & G
RT	130+32	TY C, TY 11 F & G
LT	130+75	TY C, TY 11 F & G
LT	131+65	TY C, TY 11 F & G
RT	131+88	TY C, TY 11 F & G
RT	131+98	TY C, TY 11 F & G
RT	132+46	TY C, TY 11 F & G
RT	132+56	TY C, TY 11 F & G
LT	132+92	TY C, TY 11 F & G
LT	133+02	TY C, TY 11 F & G
LT	133+36	TY C, TY 11 F & G
LT	136+97	TY C, TY 11 F & G
LT	138+20	TY C, TY 11 F & G
RT	138+52	TY C, TY 11 F & G

SCHEDULE OF QUANTITIES

GRATES TYPE 3

F.A.P. RTE.	SECTION	COUNTY	TOTAL SHEETS	SHEET NO.
716	130(R,R-URS)	MACON	36	24

CONTRACT NO. 90929

FRAME & GRATE ADJUST (Cont.)

O/S	STA	TY	C,	TY	TYPE
LT	138+78	TY	C,	TY 11	F & G
LT	138+88	TY	C,	TY 11	F & G
LT	139+60	TY	C,	TY 11	F & G
LT	140+33	TY	C,	TY 11	F & G
RT	140+33	TY	C,	TY 11	F & G
LT	140+43	TY	C,	TY 11	F & G
LT	141+20	TY	C,	TY 11	F & G
LT	141+30	TY	C,	TY 11	F & G
RT	141+88	TY	C,	TY 11	F & G
LT	142+08	TY	C,	TY 11	F & G
LT	142+18	TY	C,	TY 11	F & G
LT	142+70	TY	C,	TY 11	F & G
LT	143+42	TY	C,	TY 11	F & G
RT	143+50	TY	C,	TY 11	F & G
LT	144+43	TY	C,	TY 11	F & G
RT	144+85	TY	C,	TY 11	F & G
RT	144+95	TY	C,	TY 11	F & G
LT	145+15	TY	C,	TY 11	F & G
LT	145+52	TY	C,	TY 11	F & G
RT	146+05	TY	C,	TY 11	F & G
LT	146+86	TY	C,	TY 11	F & G
LT	147+48	TY	C,	TY 11	F & G
RT	147+50	TY	C,	TY 11	F & G
LT	148+21	TY	C,	TY 11	F & G
RT	149+00	TY	C,	TY 11	F & G
LT	149+05	TY	C,	TY 11	F & G
LT	150+64	TY	C,	TY 11	F & G
RT	150+64	TY	C,	TY 11	F & G
RT	151+90	TY	C,	TY 11	F & G

CENTER STREET

RT	19+35	TY C,	TY 3	F & G
----	-------	-------	------	-------

TOTAL QUANTITY 144.0 EACH

LT	OR	RT	STATION	TY	C,	TY	TYPE
LT			57+45	TY	C,	TY 3	FRAME & GRATE
RT			57+45	TY	C,	TY 3	FRAME & GRATE
RT			58+80	TY	C,	TY 3	FRAME & GRATE
RT			59+75	TY	C,	TY 3	FRAME & GRATE
RT			61+64	TY	C,	TY 3	FRAME & GRATE
LT			61+66	TY	A,	TY 3	FRAME & GRATE
RT			63+83	TY	C,	TY 3	FRAME & GRATE
LT			64+00	TY	C,	TY 3	FRAME & GRATE
LT			65+77	TY	C,	TY 3	FRAME & GRATE
LT			66+71	TY	C,	TY 3	FRAME & GRATE
RT			67+49	TY	C,	TY 3	FRAME & GRATE
LT			67+55	TY	C,	TY 3	FRAME & GRATE
LT			69+30	TY	C,	TY 3	FRAME & GRATE
RT			69+30	TY	C,	TY 3	FRAME & GRATE
LT			70+10	TY	A,	TY 3	FRAME & GRATE
RT			70+10	TY	A,	TY 3	FRAME & GRATE
RT			71+20	TY	C,	TY 3	FRAME & GRATE
LT			71+50	TY	A,	TY 3	FRAME & GRATE
RT			73+00	TY	C,	TY 3	FRAME & GRATE
LT			74+20	TY	C,	TY 3	FRAME & GRATE
RT			74+25	TY	C,	TY 3	FRAME & GRATE
LT			75+20	TY	C,	TY 3	FRAME & GRATE
RT			75+50	TY	C,	TY 3	FRAME & GRATE
LT			78+60	TY	C,	TY 3	FRAME & GRATE
RT			78+85	TY	C,	TY 3	FRAME & GRATE
RT			79+33	TY	C,	TY 3	FRAME & GRATE
LT			79+40	TY	C,	TY 3	FRAME & GRATE
RT			79+93	TY	C,	TY 3	FRAME & GRATE
LT			80+17	TY	C,	TY 3	FRAME & GRATE
RT			80+30	TY	C,	TY 3	FRAME & GRATE
RT			80+80	TY	C,	TY 3	FRAME & GRATE
LT			81+23	TY	C,	TY 3	FRAME & GRATE
LT			82+00	TY	C,	TY 3	FRAME & GRATE
LT			82+75	TY	C,	TY 3	FRAME & GRATE
LT			83+25	TY	C,	TY 3	FRAME & GRATE
RT			83+44	TY	C,	TY 3	FRAME & GRATE
LT			83+75	TY	C,	TY 3	FRAME & GRATE
RT			84+03	TY	C,	TY 3	FRAME & GRATE
LT			84+25	TY	C,	TY 3	FRAME & GRATE
RT			84+52	TY	C,	TY 3	FRAME & GRATE
LT			152+50	TY	C,	TY 3	FRAME & GRATE
RT			153+10	TY	C,	TY 3	FRAME & GRATE
LT			153+75	TY	C,	TY 3	FRAME & GRATE
CENTER STREET	RT		19+35	TY	C,	TY 3	FRAME & GRATE

TOTAL QUANTITY 44.0 EACH

F.A.P. RTE.	SECTION	COUNTY	TOTAL SHEETS	SHEET NO.
716	130(R,R-1)RS	MACON	36	25

CONTRACT NO. 90929

SCHEDULE OF QUANTITIES

CORRUGATED MEDIAN DOWELLED

STATION	TO	STATION	SQ FT.
108+73		110+79.8	2176
111+48.2		115+00	2150
115+00		117+95.6	1425
118+64.6		121+02	2603
128+75.3		130+38.5	1686
133+31.5		133+98	382
153+92		154+50	330
TOTAL QUANTITIES			10752.0 (SQ FT)

PCC RAMPED MEDIAN TERMINAL

LOCATION:	STATION
MARIETTA STREET	59+87.5 & 60+63.5
WILDER AVENUE	66+00 & 66+81
LEAFLAND/UNIVERSITY	72+06.5 & 72+50.5
OAKLAND AVENUE	81+61 & 81+98
	82+00.5 & 82+36.4
	82+66
WEST CENTER STREET	NORTH SIDE OF INTERSECTION
RAILROAD OVERHEAD	NORTH END
	SOUTH END
TOTAL QUANTITIES	14.0 EACH

PERMANENT SURVEY MARKERS ADJUST

STATION	LT OR RT	TYPE	DESCRIPTION
66+62.83	RT	TY I	PT
102+37.72	CL	TY I	PI
105+16.96	LT	TY I	S. E. CORNER
118+37.22	LT	TY I	S. E. CORNER
131+65.78	LT	TY I	N. E. CORNER SE 1/4
			SEC 4 T16N, SECTION 4
			T16N, R2E
TOTAL QUANTITIES		5.0 EACH	

THERMOPLASTIC PAVEMENT MARKING LINE 12"

<u>IL-48 & GRAND AVENUE INTERSECTION</u>	
2 CROSSWALKS =	540.0 FT
<u>RAVINA PARK ROAD</u>	
1 CROSSWALK =	240.0 FT
TOTAL QUANTITIES	780.0 FT

THERMOPLASTIC PAVEMENT MARKING LINE 24"

<u>IL-48 & GRAND AVENUE INTERSECTION</u>	
NB =	24 FT
SB =	24 FT

<u>RAVINA PARK ROAD</u>	
LT TURN LANE =	24 FT
RT TURN LANE =	12 FT

<u>IL-48 @ RAVINA PARK ROAD INTERSECTION</u>	
NB =	36 FT
SB =	24 FT

<u>IL-48 & IL-121 INTERSECTION</u>	
NB DUAL LT TURN LANE =	24 FT
RT TURN LANE =	20 FT
SB RT TURN LANE =	20 FT

TOTAL QUANTITIES	208.0 FT
------------------	----------

SURVEY MONUMENT COVER ASSEMBLY

O/S	LOCATION	STATION
	RT	66+62.83
	CL	102+37.72
	LT	105+16.96
	LT	118+37.22
9.84'	LT	131+65.78
TOTAL QUANTITY		5.0 EACH

SCHEDULE OF QUANTITIES

F.A.P. RTE.	SECTION	COUNTY	TOTAL SHEETS	SHEET NO.
716	130(R,R-1)RS	MACON	36	26

CONTRACT NO. 90929

PARTIAL DEPTH PATCHES

STA.	DIR	LANE	LENGTH (ft)	WIDTH (ft)	PVMNT	BIT MIX
					REM (SPL)	FOR PATCHING
					44004400	Z0004800
					(sq. yd)	(Ton)
59+76	NB	PASS	6	12	8.0	1.3
60+08	NB	CL	4	6	2.7	0.4
60+46	NB	CL	4	12	5.3	0.9
60+61	NB	PASS	4	12	5.3	0.9
61+06	NB	DRIV	4	6	2.7	0.4
60+91	NB	CL	4	20	8.9	1.5
61+55	NB	DRIV	4	6	2.7	0.4
62+76	NB	DRIV	4	6	2.7	0.4
63+16	NB	PASS	4	12	5.3	0.9
63+16	NB	DRIV	4	12	5.3	0.9
65+66	NB	CL	4	20	8.9	1.5
67+30	NB	DRIV	4	12	5.3	0.9
71+30	NB	L. TURN	4	30	13.3	2.2
72+70	NB	PASS	4	6	2.7	0.4
72+70	NB	DRIV	4	6	2.7	0.4
73+10	NB	CL	4	10	4.4	0.7
73+40	NB	CL	4	10	4.4	0.7
75+70	NB	DRIV	4	12	5.3	0.9
76+40	NB	CL	4	6	2.7	0.4
81+00	NB	L. TURN	4	12	5.3	0.9
81+00	NB	PASS	4	12	5.3	0.9
82+00	NB	DRIV	4	12	5.3	0.9
82+90	NB	DRIV	4	6	2.7	0.4
83+80	NB	DRIV	4	6	2.7	0.4
88+70	NB	DRIV	4	6	2.7	0.4
91+10	NB	DRIV	4	12	5.3	0.9
91+30	NB	DRIV	4	6	2.7	0.4
92+21	NB	DRIV	4	12	5.3	0.9
100+31	NB	DRIV	4	6	2.7	0.4
99+21	NB	DRIV	4	12	5.3	0.9
99+71	NB	DRIV	4	12	5.3	0.9
100+01	NB	DRIV	4	12	5.3	0.9
100+21	NB	DRIV	4	12	5.3	0.9
102+21	NB	DRIV	4	12	5.3	0.9
105+48	NB	DRIV	4	12	5.3	0.9
109+68	NB	DRIV	4	12	5.3	0.9
110+68	NB	DRIV	4	12	5.3	0.9
114+45	NB	DRIV	4	12	5.3	0.9

PARTIAL DEPTH PATCHES (Cont'd)

STA.	DIR	LANE	LENGTH (ft)	WIDTH (ft)	PVMNT	BIT MIX
					REM (SPL)	FOR PATCHING
					44004400	Z0004800
					(sq. yd)	(Ton)
114+75	NB	DRIV	4	12	5.3	0.9
115+55	NB	DRIV	4	12	5.3	0.9
120+45	NB	DRIV	4	12	5.3	0.9
119+88	NB	PASS	4	12	5.3	0.9
120+38	NB	DRIV	4	12	5.3	0.9
120+88	NB	DRIV	4	12	5.3	0.9
121+88	NB	DRIV	4	6	2.7	0.4
124+38	NB	DRIV	4	6	2.7	0.4
124+98	NB	DRIV	4	12	5.3	0.9
124+75	NB	PASS	4	12	5.3	0.9
126+15	NB	DRIV	4	6	2.7	0.4
126+55	NB	DRIV	4	6	2.7	0.4
127+25	NB	DRIV	4	6	2.7	0.4
127+55	NB	DRIV	4	6	2.7	0.4
127+95	NB	PASS	4	12	5.3	0.9
128+75	NB	PASS	4	12	5.3	0.9
129+35	NB	DRIV	4	6	2.7	0.4
129+75	NB	CL	4	20	8.9	1.5
132+96	NB	PASS	4	12	5.3	0.9
133+36	NB	PASS	4	12	5.3	0.9
133+36	NB	DRIV	4	12	5.3	0.9
133+66	NB	PASS	4	12	5.3	0.9
134+46	NB	PASS	4	12	5.3	0.9
138+51	NB	DRIV	4	12	5.3	0.9
139+01	NB	PASS	4	12	5.3	0.9
140+01	NB	PASS	4	12	5.3	0.9
140+01	NB	DRIV	4	12	5.3	0.9
140+71	NB	PASS	4	12	5.3	0.9
141+01	NB	PASS	4	12	5.3	0.9
142+71	NB	DRIV	4	12	5.3	0.9
142+91	NB	PASS	4	12	5.3	0.9
142+91	NB	DRIV	4	12	5.3	0.9
145+19	NB	DRIV	4	12	5.3	0.9
146+94	NB	DRIV	4	12	5.3	0.9
148+74	NB	DRIV	4	12	5.3	0.9
149+94	NB	DRIV	4	12	5.3	0.9
150+94	NB	DRIV	4	12	5.3	0.9
151+14	NB	CL	4	20	8.9	1.5

SCHEDULE OF QUANTITIES

F.A.P. RTE.	SECTION	COUNTY	TOTAL SHEETS	SHEET NO.
716	130(R,R-1)RS	MACON	36	27

CONTRACT NO. 90929

PARTIAL DEPTH PATCHES (Cont' d)

STA.	DIR	LANE	LENGTH (ft)	WIDTH (ft)	PVMNT REM (SPL) 44004400 (sq. yd)	BIT MIX FOR PATCHING Z0004800 (Ton)
151+84	NB	L. TURN	4	25	11.1	1.9
152+64	NB	DRIV	4	12	5.3	0.9
155+94	NB	DRIV	4	12	5.3	0.9
156+54	NB	CL	4	20	8.9	1.5
156+84	NB	L. TURN	4	25	11.1	1.9
157+34	NB	CL	4	25	11.1	1.9
157+54	NB	L. TURN	4	12	5.3	0.9
158+24	NB	L. TURN	4	12	5.3	0.9
158+44	NB	CL	4	20	8.9	1.5
157+38	NB	L. TURN	4	12	5.3	0.9
157+38	NB	PASS	4	20	8.9	1.5
157+38	NB	DRIV	4	30	13.3	2.2
58+16	SB	CL	4	20	8.9	1.5
59+86	SB	PASS	4	12	5.3	0.9
59+86	SB	DRIV	4	6	2.7	0.4
60+26	SB	CL	4	20	8.9	1.5
60+26	SB	CL	4	20	8.9	1.5
60+60	SB	PASS	4	12	5.3	0.9
60+60	SB	DRIV	4	12	5.3	0.9
65+30	SB	DRIV	4	6	2.7	0.4
66+25	SB	CL	4	4	1.8	0.3
69+40	SB	DRIV	4	20	8.9	1.5
70+50	SB	DRIV	4	12	5.3	0.9
71+50	SB	PASS	4	12	5.3	0.9
72+50	SB	L. TURN	4	4	1.8	0.3
72+90	SB	DRIV	4	12	5.3	0.9
73+50	SB	PASS	4	6	2.7	0.4
74+40	SB	PASS	4	6	2.7	0.4
77+10	SB	PASS	4	6	2.7	0.4
76+62	SB	DRIV	6	12	8.0	1.3
79+22	SB	DRIV	4	6	2.7	0.4
80+22	SB	DRIV	6	12	8.0	1.3
81+12	SB	DRIV	4	6	2.7	0.4
86+92	SB	DRIV	4	6	2.7	0.4
87+57	SB	PASS	4	12	5.3	0.9
92+88	SB	DRIV	4	12	5.3	0.9
93+18	SB	DRIV	4	12	5.3	0.9
95+98	SB	PASS	4	12	5.3	0.9
96+88	SB	CL	4	12	5.3	0.9

PARTIAL DEPTH PATCHES (Cont' d)

STA.	DIR	LANE	LENGTH (ft)	WIDTH (ft)	PVMNT REM (SPL) 44004400 (sq. yd)	BIT MIX FOR PATCHING Z0004800 (Ton)
99+88	SB	DRIV	4	12	5.3	0.9
102+88	SB	PASS	4	12	5.3	0.9
103+78	SB	PASS	4	12	5.3	0.9
105+48	SB	PASS	4	6	2.7	0.4
109+48	SB	DRIV	4	6	2.7	0.4
111+48	SB	DRIV	4	6	2.7	0.4
112+18	SB	DRIV	4	6	2.7	0.4
112+48	SB	DRIV	4	6	2.7	0.4
112+58	SB	DRIV	4	6	2.7	0.4
112+98	SB	DRIV	4	6	2.7	0.4
116+65	SB	PASS	4	6	2.7	0.4
119+85	SB	PASS	4	12	5.3	0.9
122+35	SB	PASS	4	12	5.3	0.9
123+95	SB	DRIV	4	12	5.3	0.9
131+06	SB	DRIV	4	12	5.3	0.9
131+31	SB	DRIV	4	6	2.7	0.4
132+69	SB	PASS	4	6	2.7	0.4
133+19	SB	DRIV	4	6	2.7	0.4
138+34	SB	CL	4	12	5.3	0.9
138+34	SB	PASS	4	12	5.3	0.9
139+84	SB	PASS	4	12	5.3	0.9
140+24	SB	PASS	4	12	5.3	0.9
141+74	SB	DRIV	4	12	5.3	0.9
142+69	SB	DRIV	4	12	5.3	0.9
145+04	SB	PASS	6	12	8.0	1.3
146+28	SB	PASS	4	12	5.3	0.9
148+72	SB	DRIV	4	6	2.7	0.4
152+01	SB	DRIV	4	12	5.3	0.9
152+12	SB	PASS	4	12	5.3	0.9
153+63	SB	CL	4	12	5.3	0.9
153+63	SB	PASS	4	12	5.3	0.9
153+63	SB	DRIV	4	12	5.3	0.9
154+65	SB	L. TURN	10	6	6.7	1.1
154+83	SB	L. TURN	4	6	2.7	0.4
155+23	SB	L. TURN	4	6	2.7	0.4
156+26	SB	R. TURN	20	6	13.3	2.2
157+13	SB	DRIV	24	6	16.0	2.7
TOTAL					796.0	134.0
					(SQ YD)	(TON)

F.A.P. RTE.	SECTION	COUNTY	TOTAL SHEETS	SHEET NO.
716	130(R,R-1)RS	MACON	36	28

CONTRACT NO. 90929

SCHEDULE OF QUANTITIES

CLASS D PATCHES

STA	DIR	LANE	LENGTH (ft)	WIDTH (ft)	DEPTH (in)	TYPE I (sq. yd)	TYPE II (sq. yd)	TYPE IV (sq. yd)
58+46	NB	PASS	8	12	10"	0.0	10.7	0.0
58+86	NB	PASS	4	10	10"	4.4	0.0	0.0
58+86	NB	DRIV	4	6	10"	2.7	0.0	0.0
59+11	NB	PASS	10	12	10"	0.0	13.3	0.0
59+11	NB	DRIV	6	6	10"	4.0	0.0	0.0
59+36	NB	PASS	6	12	10"	0.0	8.0	0.0
77+10	NB	DRIV	40	12	10"	0.0	0.0	53.3

TOTAL	11.1	32.0	53.3
	(sq. yd)	(sq. yd)	(sq. yd)
USE	12.0	32.0	54.0

DETECTOR LOOP, TYPE I LOOP SIZE 6' x 6'

W. B. GRAND AVE.
 7 LOOPS X 24' = 168 FT
 HOME RUN LENGTH = 150 FT
TOTAL = 318 FT

E. B. GRAND AVE.
 7 LOOPS X 24' = 168 FT
 HOME RUN LENGTH = 150 FT
TOTAL = 318 FT

N. B. ILL RTE. 48
 5 LOOPS X 24' = 120 FT
 HOME RUN LENGTH = 90 FT
TOTAL = 210 FT

S. B. ILL RTE. 48
 5 LOOPS X 24' = 120 FT
 HOME RUN LENGTH = 90 FT
TOTAL = 210 FT

TOTAL = 1056 FT

CONCRETE MEDIAN TSM-6 (DOWELLED) MARIETTA STREET

59+87.50 22.3 SQ FT
 60+63.50 22.3 SQ FT

WILDER AVENUE

66+00 22.3 SQ FT
 66+81 22.3 SQ FT

LEAFLAND / UNIVERSITY AVENUE

72+06.50 22.3 SQ FT
 72+50.50 22.3 SQ FT

OAKLAND AVENUE

81+61 22.3 SQ FT
 81+98 22.3 SQ FT
 82+00 22.3 SQ FT
 82+36.40 22.3 SQ FT
 82+66 22.3 SQ FT

WEST CENTER STREET

N. SIDE OF INTERSECTION
 22.3 SQ FT

RAIL-ROAD OVERHEAD

N. AND S. ENDS 44.6 SQ FT

TOTAL QUANTITY 312.2 SQ FT

F.A.P. RTE.	SECTION	COUNTY	TOTAL SHEETS	SHEET NO.
716	130(R,R-1)RS	MACON	36	29

CONTRACT NO. 90929

SCHEDULE OF QUANTITIES

ENTRANCE QUANTITIES

STA.	O/S	INCI. BIT. SURF. TON	BIT. PRIME GAL.
57+43	LT	0.4	1.3
57+63	RT	0.3	1.2
57+93	LT	0.3	1.2
58+08	RT	0.3	1.2
58+42	LT	0.4	1.3
58+53	RT	0.3	1.2
58+99	RT	0.3	1.2
59+19	LT	0.3	1.2
59+44	RT	0.3	1.2
59+75	RT	0.3	1.2
61+82	RT	0.4	1.4
62+69	RT	0.3	1.2
64+06	RT	0.5	1.9
64+69	LT	0.5	1.9
64+97	RT	0.5	1.9
65+50	LT	0.5	1.9
66+50	LT	0.5	1.7
67+60	RT	0.3	1.2
68+00	LT	0.3	1.2
68+63	RT	0.3	1.2
69+00	LT	0.4	1.5
69+75	RT	0.4	1.5
71+17	LT	0.4	1.4
71+75	RT	0.3	1.2
72+40	RT	0.3	1.2
74+20	LT	0.5	1.7
74+35	RT	0.5	1.7
75+95	RT	0.3	1.2
79+00	RT	0.5	1.7
79+00	LT	0.5	1.9
79+62	RT	0.5	1.7
80+67	LT	0.4	1.4
81+81	LT	0.4	1.3
85+00	LT	0.4	1.4
85+38	LT	0.3	1.2
85+83	LT	0.3	1.2
86+00	RT	0.4	1.4
86+31	LT	0.3	1.2
86+43	RT	0.3	1.2
86+80	LT	0.3	1.2
86+84	RT	0.3	1.2
87+24	LT	0.3	1.2
87+35	LT	0.4	1.4

ENTRANCE QUANTITIES (Cont' d)

STA.	O/S	INCI. BIT. SURF. TON	BIT. PRIME GAL.
87+64	RT	0.3	1.2
88+12	RT	0.3	1.2
88+80	RT	0.4	1.4
89+45	LT	0.3	1.2
89+65	RT	0.3	1.2
89+97	LT	0.3	1.2
92+43	RT	0.3	1.2
92+86	RT	0.3	1.2
93+25	RT	0.3	1.2
93+66	RT	0.3	1.2
94+22	LT	0.4	1.4
94+39	RT	0.4	1.3
94+85	RT	0.4	1.3
95+23	RT	0.3	1.2
95+67	RT	0.3	1.2
96+03	RT	0.3	1.2
96+44	RT	0.3	1.2
97+10	RT	0.3	1.2
99+41	RT	0.3	1.2
100+25	RT	0.4	1.4
101+41	RT	0.4	1.4
102+20	RT	0.4	1.4
103+63	RT	0.4	1.4
106+54	RT	0.6	2.1
107+58	RT	0.6	2.1
109+12	RT	0.6	2.1
110+17	RT	0.5	1.8
110+26	LT	0.5	1.9
111+33	LT	0.5	1.9
112+25	RT	0.4	1.4
112+43	LT	0.4	1.6
112+61	RT	0.3	1.2
113+07	RT	0.5	1.9
114+47	RT	0.5	1.9
115+14	RT	0.6	2.1
116+06	LT	0.4	1.5
116+07	RT	0.6	2.1
117+23	LT	0.5	1.9
117+43	RT	0.6	2.1
118+94	RT	0.4	1.4
119+19	LT	0.6	2.1
119+36	RT	0.3	1.2
119+77	LT	0.6	2.1

ENTRANCE QUANTITIES (Cont' d)

STA.	O/S	INCI. BIT. SURF. TON	BIT. PRIME GAL.
120+85	LT	0.6	2.1
120+96	RT	0.6	2.2
121+74	LT	0.6	2.0
122+20	RT	0.6	2.1
122+73	RT	0.6	2.1
122+73	LT	0.5	1.8
123+44	LT	0.4	1.5
123+44	RT	0.6	2.0
123+87	LT	0.3	1.2
124+14	RT	0.6	2.0
139+23	LT	0.6	2.0
139+98	LT	0.6	2.0
140+45	LT	0.6	2.1
141+52	RT	0.6	2.1
141+65	LT	0.6	2.1
143+05	LT	0.6	2.1
144+10	RT	0.6	2.1
144+73	RT	0.5	1.9
145+72	RT	0.4	1.6
146+27	LT	0.5	1.8
147+18	RT	0.5	1.9
148+00	LT	0.3	1.2
148+41	LT	0.4	1.4
148+82	LT	0.4	1.4
149+33	LT	0.5	1.8
149+89	LT	0.4	1.5
150+38	LT	0.4	1.5
150+95	LT	0.4	1.4
153+03	LT	0.6	2.1
153+58	RT	0.5	1.8
154+81	RT	0.4	1.5
155+03	LT	0.5	1.8
155+37	RT	0.4	1.5
155+85	RT	0.6	2.1
156+00	LT	0.5	1.8
TOTAL QUANTITY =		53.0 (TON)	188.0 (GAL)

SCHEDULE OF QUANTITIES

F.A.P. RTE.	SECTION	COUNTY	TOTAL SHEETS	SHEET NO.
716	130(R,R-1)RS	MACON	36	30

CONTRACT NO. 90929

SIDE STREET QUANTITIES

LOCATION	AREA SQYD	PCC BUTT JOINT SQYD	INCI. BIT. SURF. TON	BIT. PRIME. GAL	AGG. PRIME. TON
MARIETTA ST.	167.4	167.4	16.5	20.7	0.4
WILDER ST.	86.7	86.7	8.5	8.7	0.2
UNIVERSITY AVE.	83.7	83.7	8.2	8.4	0.2
GRAND AVE.	733.8	128.9	71.9	73.4	1.5
OAKLAND AVE.	182.9	182.9	17.9	18.3	0.4
CENTER ST.	59.3	59.3	5.8	5.9	0.1
WEST CUSHING	59.2	59.2	5.8	5.9	0.1
DIVISION ST.	163.0	163.0	16.0	16.3	0.3
OLIVE ST.	62.2	71.1	7.0	7.1	0.1
GRANT ST.	74.8	74.8	7.3	0.1	0.0
HARRISON AVE	132.5	132.5	13.0	0.3	0.0
RAVINA PARK RD.	635.0	61.9	60.2	1.3	0.0
SERVICE DR.	45.6	52.2	5.1	5.2	0.1
HILL ST.	71.9	79.4	0.8	7.8	0.2
MCKINLEY AVE.	113.3	113.3	11.1	11.3	0.2
CORSON ST.	68.5	75.9	7.4	6.9	0.1
TOTAL	2802.0	1375.0	273.0	280.2	5.6
QUANTITIES	(SQYD)	(SQYD)	(TON)	(GAL)	(TON)

FINAL INCIDENTAL QUANTITIES

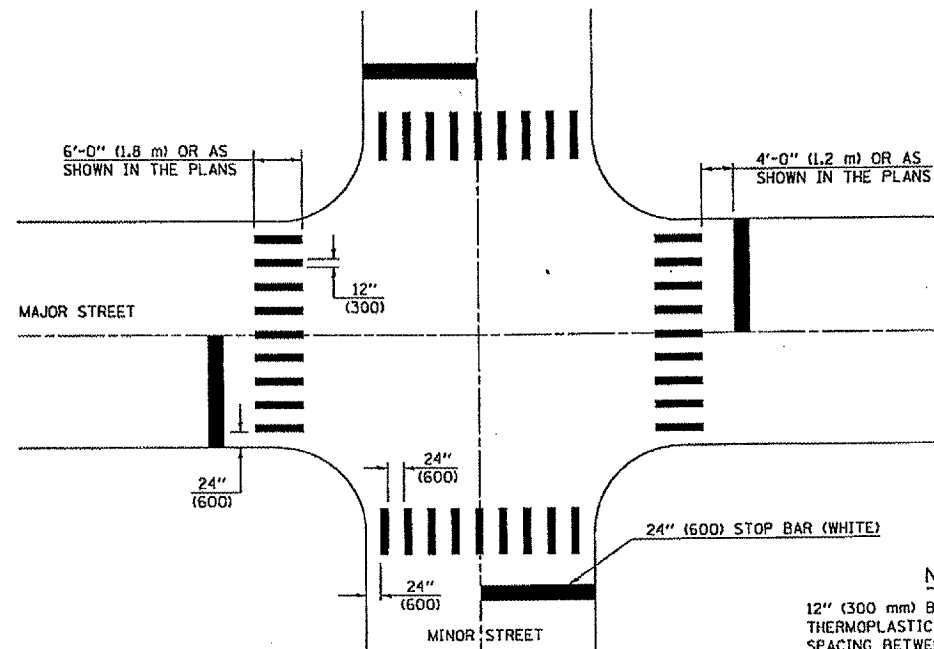
LOCATION	PCC BUTT JOINT SQYD	INCI. BIT. SURF. TON	BIT. PRIME. GAL	AGG. PRIME. TON
ENTRANCES	0.0	53.0	188.0	0.0
SIDE STREETS	1,593.0	273.0	280.2	5.6
MAINLINE	960.0	0.0	0.0	0.0
GRAND TOTAL	2,553.0	326.0	469.0	6.0
	(SQYD)	(TON)	(GAL)	(TON)

MAINLINE PCC BUTT JOINTS	SQYD
57+07 BEGIN JOB	160.0
STR. # 056-0033	
131+00 RT	80.0
131+45 LT	80.0
132+15 RT	80.0
132+50 LT	80.0
STR#056-0056	
314+71	160.0
136+83	160.0
157+37 END JOB	160.0
MAINLINE TOTAL	960.0 SQYD

F.A.P. RTE.	SECTION	COUNTY	TOTAL SHEETS	SHEET NO.
716	130R,R-URS	MACON	36	31

CONTRACT NO. 90929

DETAIL OF CROSSWALK MARKINGS (FOR USE IN CITY OF DECATUR)



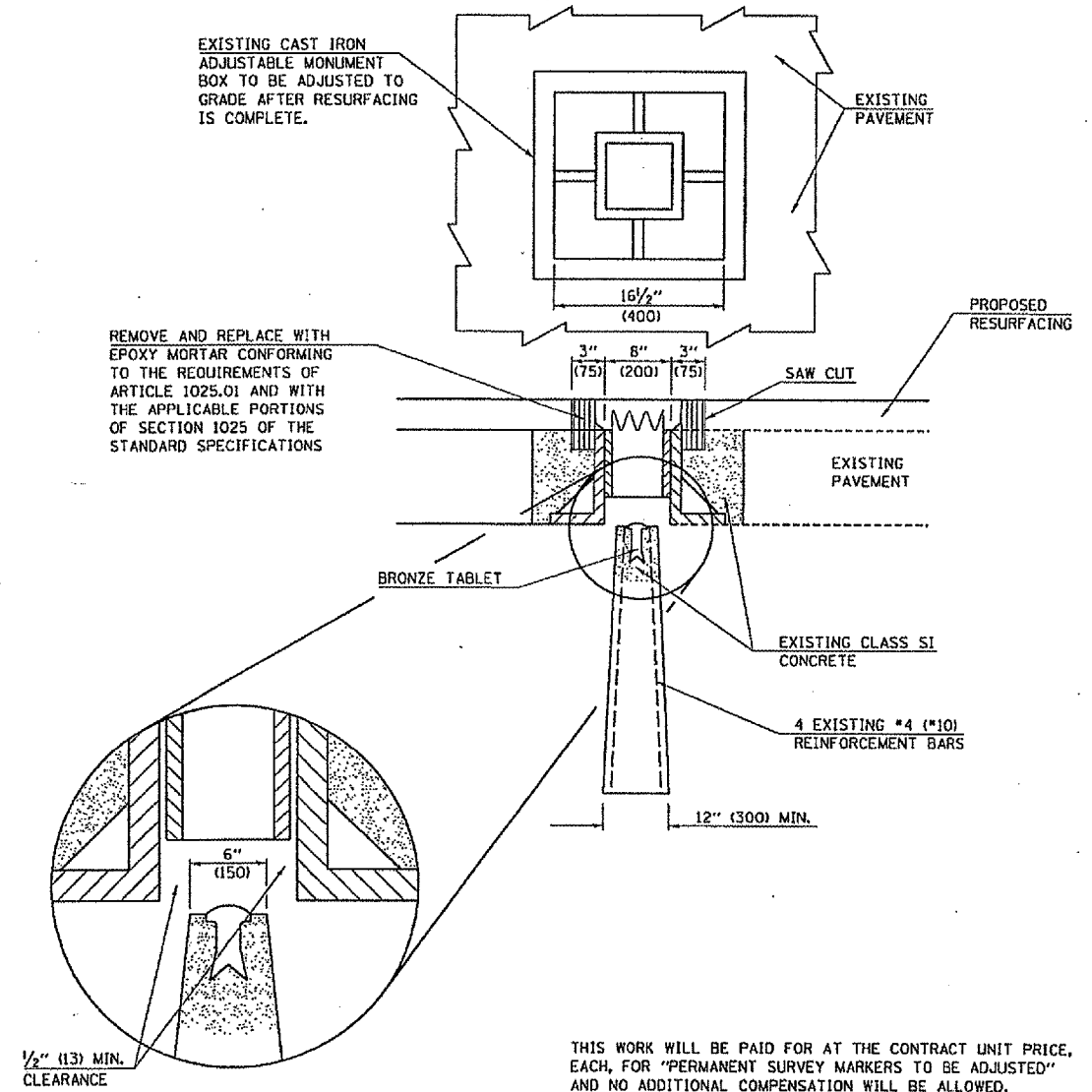
NOTES

12" (300 mm) BARS SHALL BE WHITE THERMOPLASTIC. SPACING BETWEEN 12" (300 mm) BARS SHALL BE 24" (600 mm).

ALL DIMENSIONS ARE IN INCHES (MILLIMETERS) UNLESS OTHERWISE SHOWN.

	NAME	DATE	REVISIONS	
	NAME	DATE	NAME	DATE
DESIGNED	W.R.G.	11-95		
CHECKED	D.L.P.	12-95	K.A.G.	02/04
CADD NO.	F-5.23			

DETAIL OF PERMANENT SURVEY MARKERS TO BE ADJUSTED



THIS WORK WILL BE PAID FOR AT THE CONTRACT UNIT PRICE, EACH, FOR "PERMANENT SURVEY MARKERS TO BE ADJUSTED" AND NO ADDITIONAL COMPENSATION WILL BE ALLOWED.

	NAME	DATE	REVISIONS	
	NAME	DATE	NAME	DATE
DESIGNED	Pr.A.T.	1994		
CHECKED	D.L.P.	12-95	D.L.P.	12-95
CADD NO.	D-1.06			

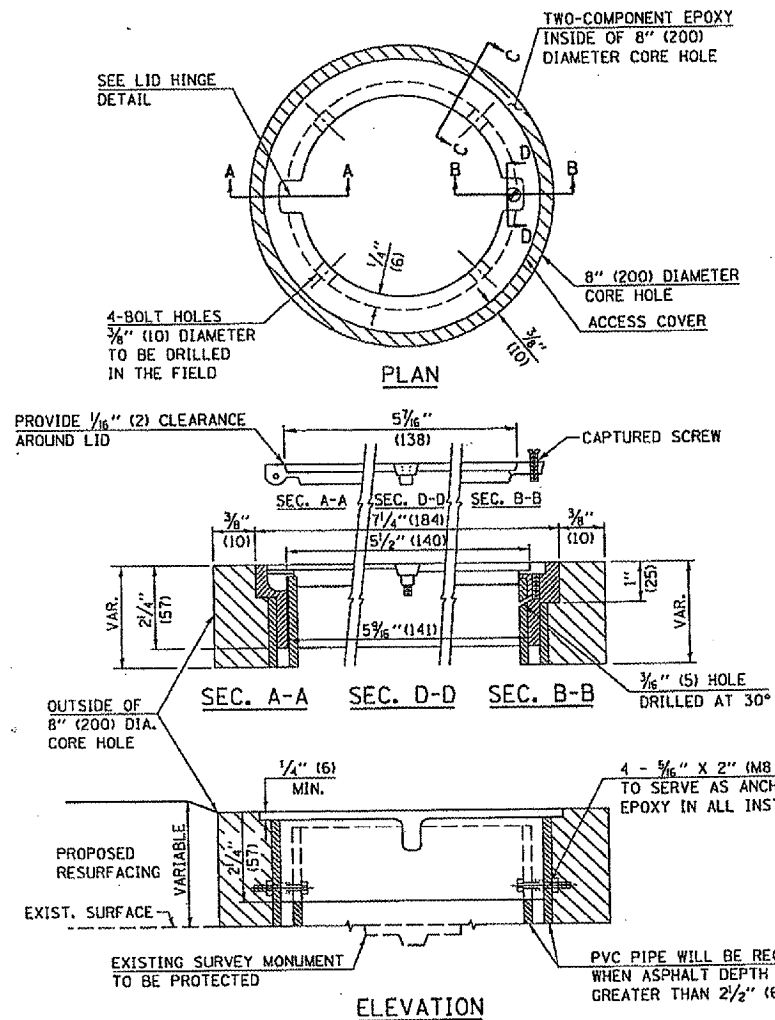
ALL DIMENSIONS ARE IN INCHES (MILLIMETERS) UNLESS OTHERWISE SHOWN.

F.P.P. R.T.E.	SECTION	COUNTY	TOTAL SHEETS	SHEET NO.
716	130R-R-URS	MACON	36	32

CONTRACT NO. 90929

DETAIL OF SURVEY MONUMENT COVER ASSEMBLY

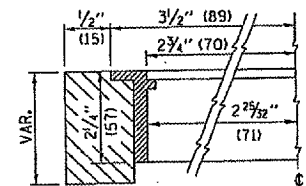
TO BE INSTALLED WHEN AN EXISTING LAND SURVEY MONUMENT IS TO BE PRESERVED IN EXISTING RIGID AND COMPOSITE PAVEMENT



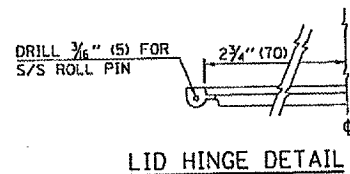
SPECIFICATIONS FOR ACCESS COVER FOR USE WITH SURVEY MARKER VAULT(S) AND SURVEY MARKER COVER ASSEMBLY(S): THE ACCESS COVER WILL BE CAST FROM A SPECIAL ALUMINUM ALLOY THAT IS COMPARABLE TO BRONZE IN HARDNESS. THE ACCESS COVER SHALL BE SPECIALLY ENGINEERED AND DESIGNED TO PROVIDE A SNUG FIT, INCORPORATING EQUIDISTANT LOCKING RIDGES, INSIDE A STANDARD 6" (150 mm) DIAMETER, OR OUTSIDE A STANDARD 5" (125 mm) DIAMETER, SCHEDULE 40 PVC PIPE. THE ACCESS COVER SHALL HAVE SPECIAL UNIFORM 1" (25 mm) THICK TOP SURFACE TO PERMIT INFORMATION TO BE EASILY MACHINE-STAMPED INTO IT. THE ACCESS COVER SHALL INCLUDE A STAINLESS CAPTURED SCREW AND AN OPPOSING RECESSED HINGE ASSEMBLY AS ITS LOCKING MECHANISM. THE ACCESS COVER SHALL INCORPORATE A SPECIAL ACCESS HOLE FOR CLEANING AND DRAINAGE, DRILLED AT 30° INSIDE THE RING OF THE ACCESS COVER, TO THE DRILLED AND TAPPED HOLE PROVIDED FOR THE STAINLESS CAPTURED SCREW. COMPOSITION: ALUMINUM 92-93%; MAGNESIUM 6.5-7.5%. STRENGTH: YIELD - 19,000-21,000 PSI (131-145 MPa); TENSILE - 38,000-44,000 PSI (262-303 MPa); ELONGATION - 10-15% IN 2" (50 mm). SPECIFICATIONS: ALLOY 535.0; 00-A-6016s. NO EXCEPTIONS.

LEGEND

- ALUMINUM CASTING
- 5" (125) OR 6" (150) P.V.C. PIPE
- TWO-COMPONENT EPOXY



SECTION C-C



LID HINGE DETAIL

GENERAL NOTES

1. WORK SHALL NOT START ON THIS ITEM UNTIL THE FINAL LIFT OF SURFACE HAS BEEN COMPLETED.
2. THE SURVEY MONUMENT COVER ASSEMBLY SHALL BE CENTERED ABOVE THE SURVEY MONUMENT TO BE PROTECTED.
3. MODIFICATION OF THE ALUMINUM CASTING SHALL BE DONE BY GRINDING OR SAWING WHEN HEIGHT REDUCTION IS REQUIRED.
4. ALL SURVEY MONUMENT COVER ASSEMBLIES SHALL BE PLACED 1/4" (6 mm) ± BELOW THE FINAL SURFACE.
5. ALUMINUM CASTING SHALL BE PLACED OVER A 5" (125 mm) P.V.C. PIPE OR INSIDE OF A 6" (150 mm) P.V.C. PIPE WHEN AN INCREASE IN HEIGHT IS REQUIRED.
6. THE CASTING SHALL BE ANCHORED IN THE 8" (200 mm) DIAMETER CORE HOLE WITH TWO-COMPONENT EPOXY CONFORMING TO APPLICABLE PORTIONS OF ARTICLE 1025.01 OF THE STANDARD SPECIFICATIONS.
7. THIS WORK WILL BE PAID FOR AT THE CONTRACT UNIT PRICE EACH FOR SURVEY MONUMENT COVER ASSEMBLY WHICH PRICE SHALL INCLUDE ALL LABOR AND MATERIAL AS SPECIFIED INCLUDING CORING THE NEW PAVEMENT SURFACE AND EPOXY. NO ADDITIONAL COMPENSATION WILL BE ALLOWED.
8. THE 8" (200 mm) DIAMETER CORE HOLE SHALL BE SUBJECT TO THE APPROVAL OF THE ENGINEER.

BILL OF MATERIAL

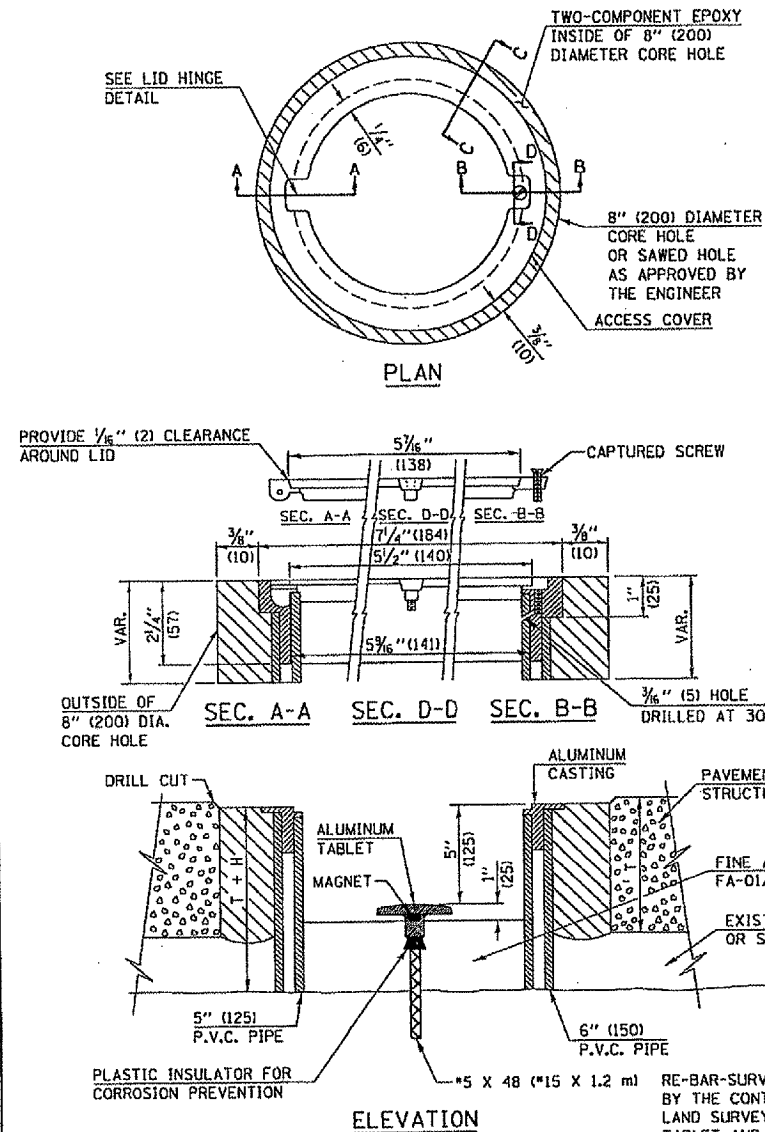
ALUMINUM CASTING OF THE DIMENSIONS AND SPECIFICATIONS SHOWN OR OTHER SUBJECT TO ENGINEER'S APPROVAL OF SHOP DRAWINGS, 4 EACH - 5/8" X 2" (M8 X 50) BOLTS WITH NUTS, EPOXY, 5" OR 6" (125 mm OR 150 mm) DIAMETER P.V.C. PIPE, SCHEDULE 40 (WHEN REQUIRED).

ALL DIMENSIONS ARE IN INCHES (MILLIMETERS) UNLESS OTHERWISE SHOWN.

DESIGNED	NAME	DATE	REVISIONS	NAME	DATE
DESIGNED	A.W.H.	2-28-91			
CHECKED	J.H.M.	2-28-91		D.L.P.	10/96
CADD NO.	D-104			K.A.G.	06/03

DETAIL OF SURVEY MARKER VAULT

FOR RESETTING LAND SURVEY MONUMENTS IN RIGID AND COMPOSITE PAVEMENTS

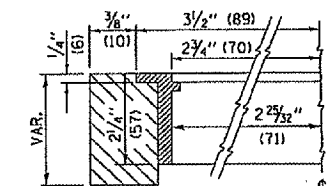


SPECIFICATIONS FOR ACCESS COVER FOR USE WITH SURVEY MARKER VAULT(S) AND SURVEY MARKER COVER ASSEMBLY(S): THE ACCESS COVER WILL BE CAST FROM A SPECIAL ALUMINUM ALLOY THAT IS COMPARABLE TO BRONZE IN HARDNESS. THE ACCESS COVER SHALL BE SPECIALLY ENGINEERED AND DESIGNED TO PROVIDE A SNUG FIT, INCORPORATING EQUIDISTANT LOCKING RIDGES, INSIDE A STANDARD 6" (150 mm) DIAMETER, OR OUTSIDE A STANDARD 5" (125 mm) DIAMETER, SCHEDULE 40 PVC PIPE. THE ACCESS COVER SHALL HAVE SPECIAL UNIFORM 1" (25 mm) THICK TOP SURFACE TO PERMIT INFORMATION TO BE EASILY MACHINE-STAMPED INTO IT. THE ACCESS COVER SHALL INCLUDE A STAINLESS CAPTURED SCREW AND AN OPPOSING RECESSED HINGE ASSEMBLY AS ITS LOCKING MECHANISM. THE ACCESS COVER SHALL INCORPORATE A SPECIAL ACCESS HOLE FOR CLEANING AND DRAINAGE, DRILLED AT 30° INSIDE THE RING OF THE ACCESS COVER, TO THE DRILLED AND TAPPED HOLE PROVIDED FOR THE STAINLESS CAPTURED SCREW. COMPOSITION: ALUMINUM 92-93%; MAGNESIUM 6.5-7.5%. STRENGTH: YIELD - 19,000-21,000 PSI (131-145 MPa); TENSILE - 38,000-44,000 PSI (262-303 MPa); ELONGATION - 10-15% IN 2" (50 mm). SPECIFICATIONS: ALLOY 535.0; 00-A-6016s. NO EXCEPTIONS.

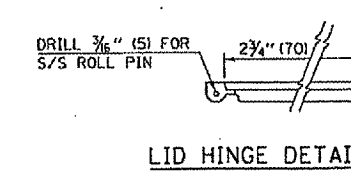
LEGEND

- ALUMINUM CASTING
- 5" (125) OR 6" (150) P.V.C. PIPE
- TWO-COMPONENT EPOXY

T = THICKNESS OF PAVEMENT STRUCTURE
H = THE THICKNESS OF THE SUB-BASE GRANULAR + 1" (25)



SECTION C-C



LID HINGE DETAIL

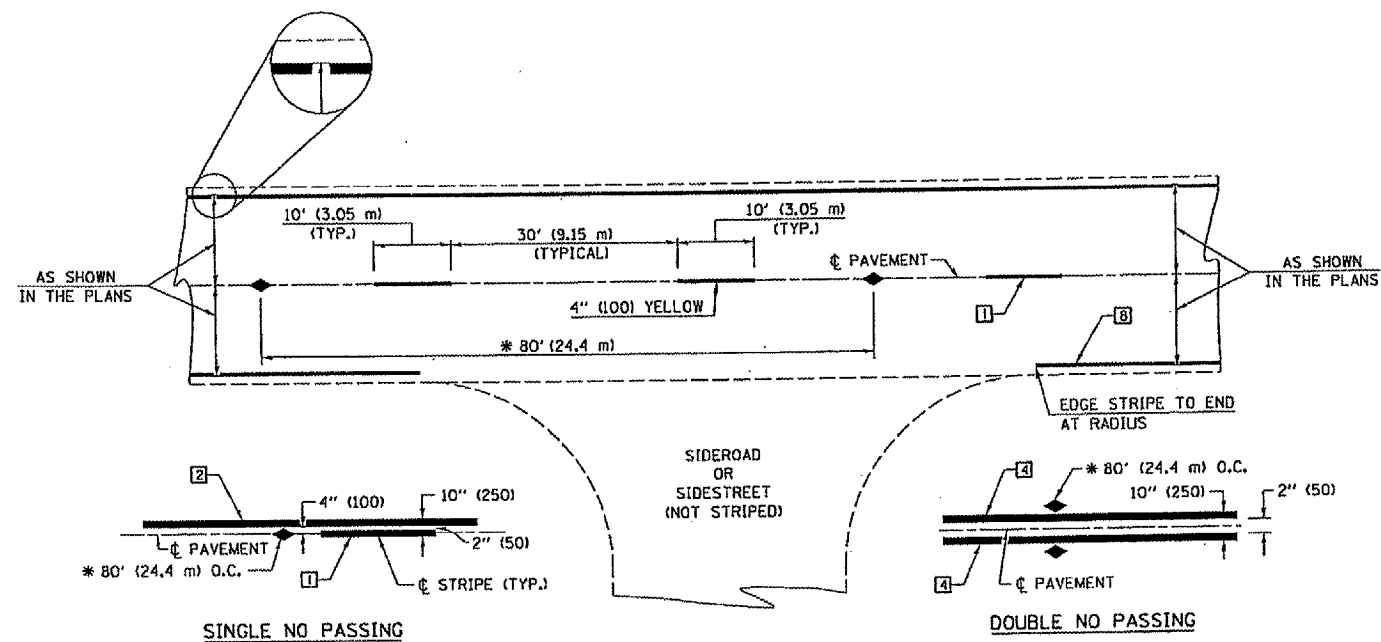
GENERAL NOTES

1. ALUMINUM CASTING SHALL BE EITHER PLACED OVER A 5" (125 mm) P.V.C. PIPE OR INSIDE OF A 6" (150 mm) P.V.C. PIPE.
2. BACKFILL WITH FINE AGGREGATE - FA-01/02.
3. WORK SHALL NOT START ON THIS ITEM UNTIL THE FINAL LIFT OF SURFACE HAS BEEN COMPLETED.
4. THIS WORK WILL BE PAID FOR AT THE CONTRACT UNIT PRICE EACH FOR SURVEY MARKER VAULT WHICH PRICE SHALL INCLUDE ALL LABOR AND MATERIAL AS SPECIFIED INCLUDING CORING, EPOXY AND FA-01/02 AGGREGATE AND NO ADDITIONAL COMPENSATION WILL BE ALLOWED.
5. THE CASTING SHALL BE ANCHORED IN THE 8" (200 mm) DIAMETER CORE HOLE WITH TWO-COMPONENT EPOXY CONFORMING TO APPLICABLE PORTIONS OF ARTICLE 1025.01 OF THE STANDARD SPECIFICATIONS.
6. ALL SURVEY MARKER (VAULTS) SHALL BE PLACED 1/4" (6 mm) ± BELOW THE FINAL SURFACE.
7. THE 8" (200 mm) DIAMETER CORE HOLE SHALL BE SUBJECT TO THE APPROVAL OF THE ENGINEER.

BILL OF MATERIAL

ALUMINUM CASTING OF THE DIMENSIONS AND SPECIFICATIONS SHOWN OR OTHER SUBJECT TO ENGINEER'S APPROVAL OF SHOP DRAWINGS, 5" OR 6" (125 mm OR 150 mm) DIAMETER P.V.C. PIPE, SCHEDULE 40, ALUMINUM TABLET, STAMPED IN ACCORDANCE WITH STANDARD 667101, 5/8" X 48" (15 X 1.2 m) RE-BAR, EPOXY AND FA-01/02 AGGREGATE.

TYPICAL APPLICATIONS OF PAVEMENT MARKINGS AND MARKERS



* REDUCE TO 40' (12.2 m) O.C. ON CURVES WITH POSTED OR ADVISORY SPEEDS OF 45 mph (70 km/h) OR LESS.

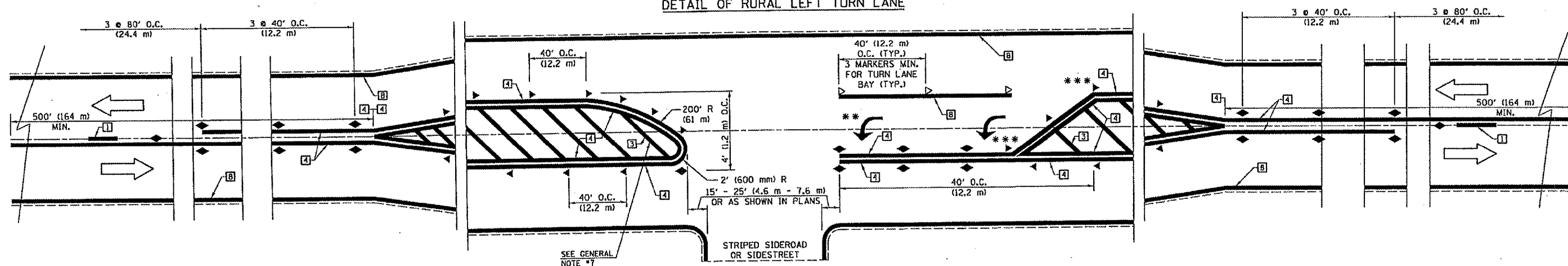
TYPICAL PAVEMENT MARKING LEGEND

- 1 4" (100) SKIP-DASH (YELLOW)
 - 2 4" (100) SOLID (YELLOW)
 - 3 12" (300) DIAGONAL (YELLOW)
 - 4 4" (100) DOUBLE YELLOW (NARROW)
 - 5 RESERVED
 - 6 RESERVED
 - 7 4" (100) SKIP-DASH (WHITE)
 - 8 4" (100) SOLID (WHITE)
 - 9 12" (300) DIAGONAL (WHITE)
 - 10 6" (150) CROSS WALK (WHITE)
 - 11 24" (600) STOP BAR (WHITE)
 - 12 8" (200) SOLID (WHITE)
 - 13 4" (100) LANE LINE EXTENSIONS (WHITE)
 - 14 4" (100) PARKING WHITE
-

TYPICAL PAVEMENT MARKERS LEGEND

- ◆ TWO-WAY AMBER MARKER
- ▶ ONE-WAY AMBER MARKER
- ▷ ONE-WAY CRYSTAL MARKER

DETAIL OF RURAL LEFT TURN LANE



*** REDUCE SPACING IF NECESSARY TO ASSURE MARKERS AT CORNER POINTS.

** TURN ARROWS SHALL BE PLACED AS SHOWN ON SHEET *2.

SHEET 1 OF 3

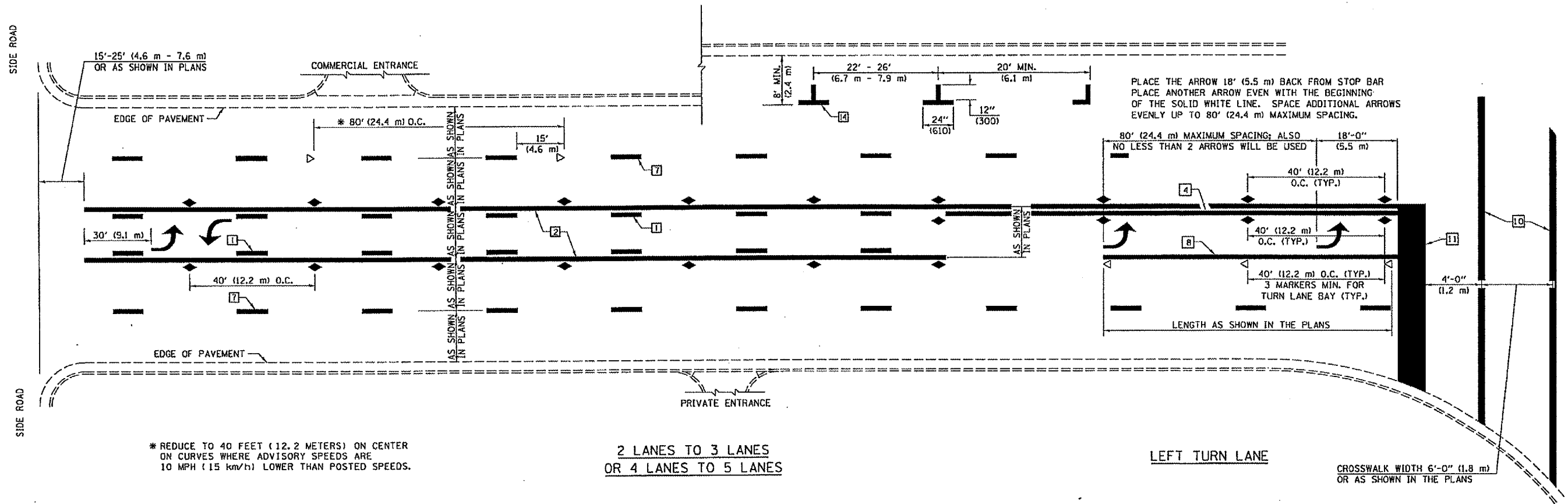
	NAME		DATE		REVISIONS	
	DESIGNED	CHECKED	CADD NO.	NAME	DATE	
	J.M.H.	FMS	F-5,25	GEOMETRICS/K.A.G.	07/02	
				K.A.G.	08/03	

ALL DIMENSIONS ARE IN INCHES (MILLIMETERS) UNLESS OTHERWISE SHOWN.

F.A.P. RTE.	SECTION	COUNTY	TOTAL SHEETS	SHEET NO.
716	1301R-R-11RS	MACON	36	34

CONTRACT NO. 90929

TYPICAL APPLICATIONS OF PAVEMENT MARKINGS AND MARKERS



* REDUCE TO 40 FEET (12.2 METERS) ON CENTER ON CURVES WHERE ADVISORY SPEEDS ARE 10 MPH (15 km/h) LOWER THAN POSTED SPEEDS.

2 LANES TO 3 LANES
OR 4 LANES TO 5 LANES

LEFT TURN LANE

CROSSWALK WIDTH 6'-0" (1.8 m)
OR AS SHOWN IN THE PLANS

SHEET 2 OF 3

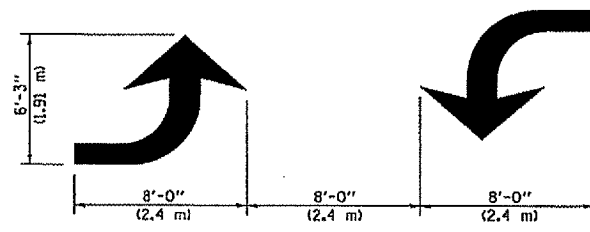
DESIGNED	NAME	DATE	REVISIONS
J.M.H.	J.M.H.	5/85	
CHECKED	FMS	6/85	
CADD NO.	F-5.25	6/88	

ALL DIMENSIONS ARE IN INCHES (MILLIMETERS) UNLESS OTHERWISE SHOWN.

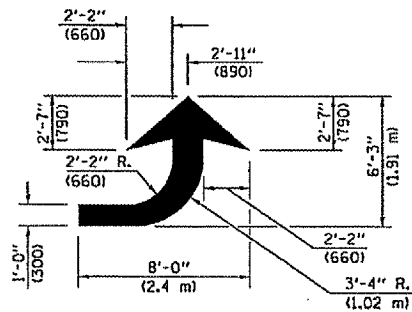
F.A.P. R.T.E.	SECTION	COUNTY	TOTAL SHEETS	SHEET NO.
716	130R,R-URS	MACON	36	35

CONTRACT NO. 90929

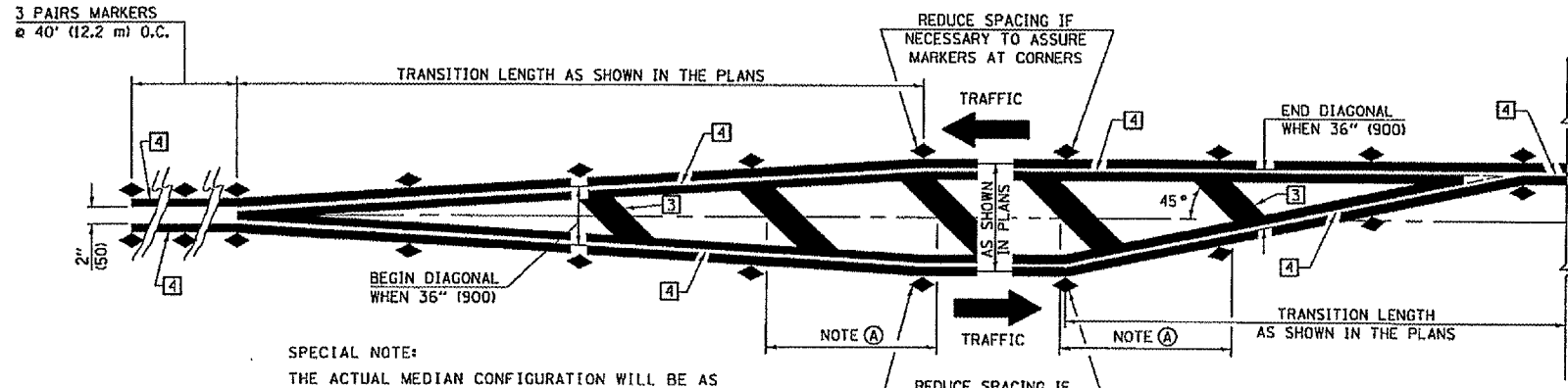
TYPICAL APPLICATIONS OF PAVEMENT MARKINGS AND MARKERS



TYPICAL DOUBLE TURN ARROWS (WHITE)



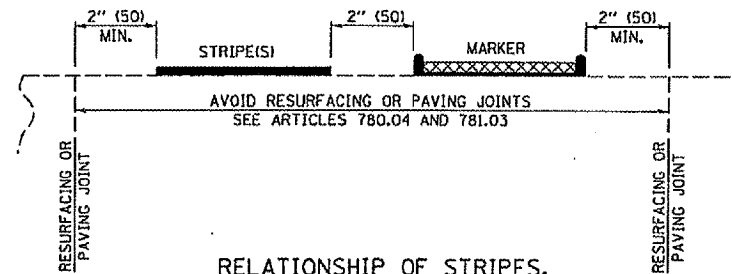
LEFT ARROW
REVERSE FOR RIGHT ARROW
AREA = 15.6 SQ. FT. (1.47 m²)
(WHITE)



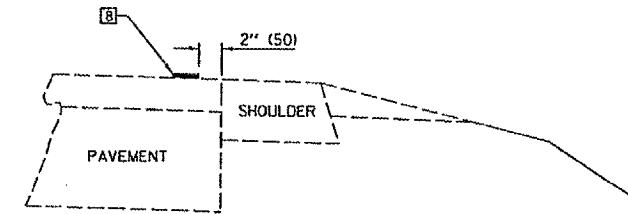
SPECIAL NOTE:
THE ACTUAL MEDIAN CONFIGURATION WILL BE AS SHOWN IN THE PLANS (TAPER OR REVERSE CURVE).

NOTE (A)
THE FOLLOWING CRITERIA SHALL BE USED FOR SELECTING THE DIAGONAL PAVEMENT MARKING SPACING:
< 30 MPH USE 15' (< 50 km/h USE 4.5 m)
30-45 MPH USE 20' (50-75 km/h USE 6.0 m)
> 45 MPH USE 30' (> 75 km/h USE 9.0 m)

TYPICAL MEDIAN TRANSITIONS



RELATIONSHIP OF STRIPES, MARKERS AND JOINTS



RELATIONSHIP OF EDGE STRIPE TO SAFETY SHOULDER OR PAVED SURFACE

SPECIAL NOTES:

TURN ARROW PAIRS SHALL BE PLACED AT 250' (75 m) INTERVALS AND SHALL BE EVENLY SPACED BETWEEN BOTH ENDS OF THE BIDIRECTIONAL LEFT TURN LANE.

THE SOLID YELLOW PAVEMENT MARKINGS [2] SHOULD GENERALLY START OR END NEAR THE RADIUS POINT OF EACH STREET RETURN EXCEPT WHERE ONE OR BOTH ENDS WOULD INCLUDE STOP BARS.

THE SKIP-DASH PAVEMENT MARKINGS [1] OR [7] SHOULD BE CENTERED BETWEEN BOTH ENDS OF EACH CITY BLOCK AND SHALL BE PLACED SO THEY LINE UP ACROSS FROM EACH OTHER. SEE EXAMPLE ABOVE.

GENERAL NOTES

1. WHEN MEDIANS ARE PRESENT, PAVEMENT MARKINGS ARE TO BE PLACED ADJACENT TO MEDIANS.
2. SCALE: NONE
3. SOME OF THE INFORMATION INCLUDED WITH THIS DETAIL MAY NOT BE APPLICABLE TO THIS IMPROVEMENT.
4. PAVEMENT MARKINGS ARE TO BE EXTENDED THROUGH OMISSIONS WHEN APPLICABLE.
5. A STRIPING KEY IS AVAILABLE ELSEWHERE AND SHALL BE SHOWN WHERE THE QUANTITIES ARE LISTED.
6. FINAL PAVEMENT MARKINGS SHALL BE IN PLACE PRIOR TO PLACING ANY RAISED REFLECTIVE PAVEMENT MARKERS.
7. THE FOLLOWING CRITERIA SHALL BE USED FOR SELECTING THE DIAGONAL PAVEMENT MARKING SPACING,
< 30 MPH USE 15' (< 50 km/h USE 4.5 m)
30-45 MPH USE 20' (50-75 km/h USE 6.0 m)
> 45 MPH USE 30' (> 75 km/h USE 9.0 m)

SHEET 3 OF 3

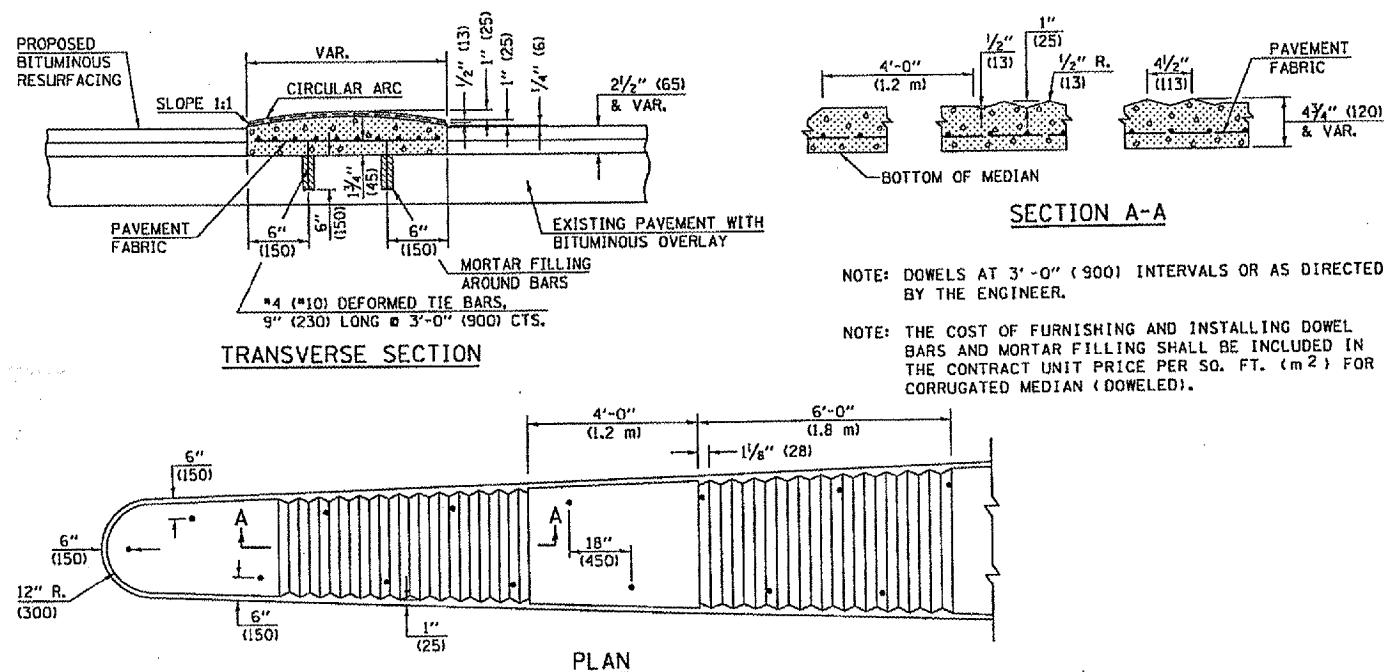
DESIGNED	NAME	DATE	REVISIONS	NAME	DATE
J.M.H.	J.M.H.	5/85			
CHECKED	FMS	6/85		GEOMETRICS/K.A.G.	07/02
CADD NO.	F-5,25	6/88		K.A.G.	08/03

ALL DIMENSIONS ARE IN INCHES (MILLIMETERS) UNLESS OTHERWISE SHOWN.

F.A.P. RTE.	SECTION	COUNTY	TOTAL SHEETS	SHEET NO.
716	1301R-R-JRS	MACON	36	36

CONTRACT NO. 90929

DETAIL OF CORRUGATED MEDIAN (DOWELED)



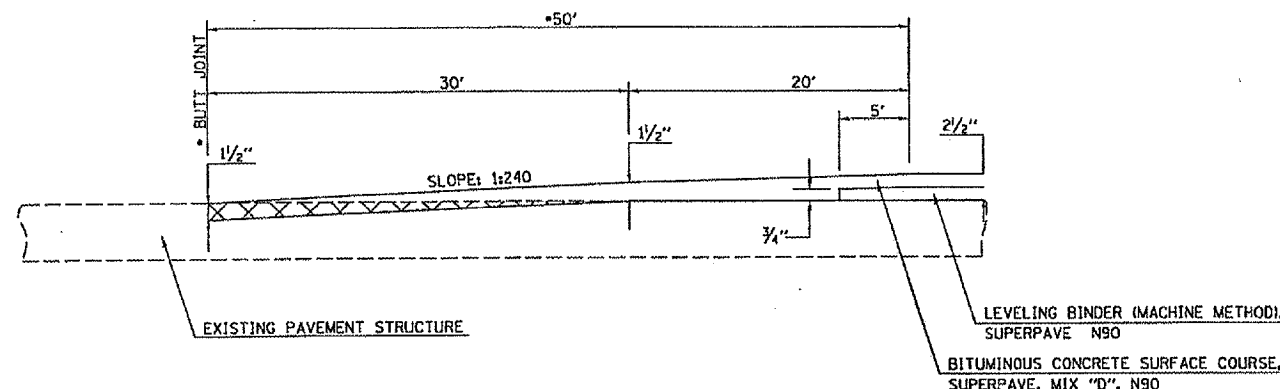
NOTE: DOWELS AT 3'-0" (900) INTERVALS OR AS DIRECTED BY THE ENGINEER.

NOTE: THE COST OF FURNISHING AND INSTALLING DOWEL BARS AND MORTAR FILLING SHALL BE INCLUDED IN THE CONTRACT UNIT PRICE PER SQ. FT. (m²) FOR CORRUGATED MEDIAN (DOWELED).

NAME	DATE	REVISIONS
DESIGNED	J.H.M. 4-89	
CHECKED	J.M.H. 4-89	
CADD NO.	A-5.01	

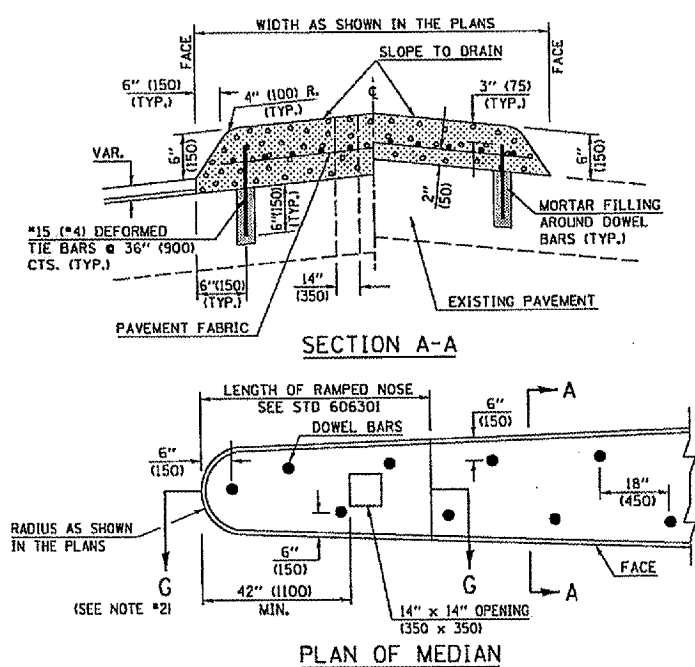
ALL DIMENSIONS ARE IN INCHES (MILLIMETERS) UNLESS OTHERWISE SHOWN.

DETAIL OF PORTLAND CEMENT CONCRETE SURFACE REMOVAL - BUTT JOINT MAINLINE



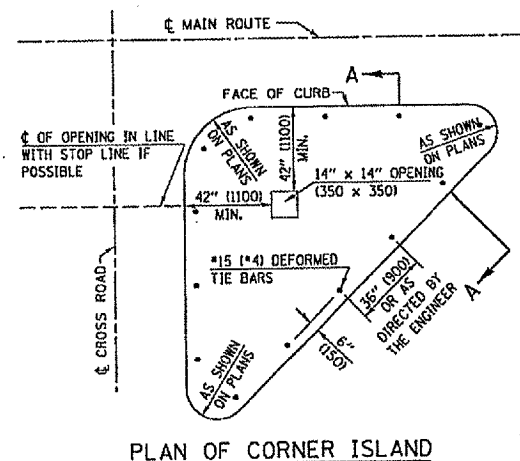
- BUTT JOINT LOCATIONS:
PROJECT START 57+07.00
PROJECT END 157+37.70
- OMISSION FROM RESURFACING STR *056-0033 LT STA 131+40.00 TO LT STA 132+50.00
- OMISSION FROM RESURFACING STR *056-0056 RT STA 131+00.00 TO RT STA 132+10.00
- OMISSION FROM RESURFACING STA 134+71.20 TO STA 136+82.80

DETAIL OF CONCRETE MEDIAN, TYPE SM-6 (SM-15) (DOWELED)



GENERAL NOTES

- THE GENERAL NOTES FOR STANDARD 606301 SHALL APPLY.
- SECTION G-G SHALL BE THE SAME AS SHOWN ON STANDARD 606301.
- DOWEL BARS ϕ 3/8" (900) CTS. OR AS DIRECTED BY THE ENGINEER.
- THIS WORK WILL BE PAID FOR AT THE CONTRACT UNIT PRICE PER SQ FOOT (m²) FOR CONCRETE MEDIAN, TYPE SM-6 (SM-15) (DOWELED), INCLUDING THE COST OF FURNISHING AND INSTALLING THE DOWEL BARS, MORTAR FILLING, PAVEMENT FABRIC AND THE REMOVAL AND DISPOSAL OF THE EXISTING PAVEMENT FOR THE 14" x 14" (350 x 350) OPENING, IF REQUIRED, AND NO ADDITIONAL COMPENSATION WILL BE ALLOWED.



NAME	DATE	REVISIONS
DESIGNED	J.M.H. 1-89	
CHECKED	F.M.S. 1-89	
CADD NO.	A-5.07	

ALL DIMENSIONS ARE IN INCHES (MILLIMETERS) UNLESS OTHERWISE SHOWN.

DETAIL OF PORTLAND CEMENT CONCRETE SURFACE REMOVAL - BUTT JOINT PRIVATE & COMMERCIAL ENTRANCES

