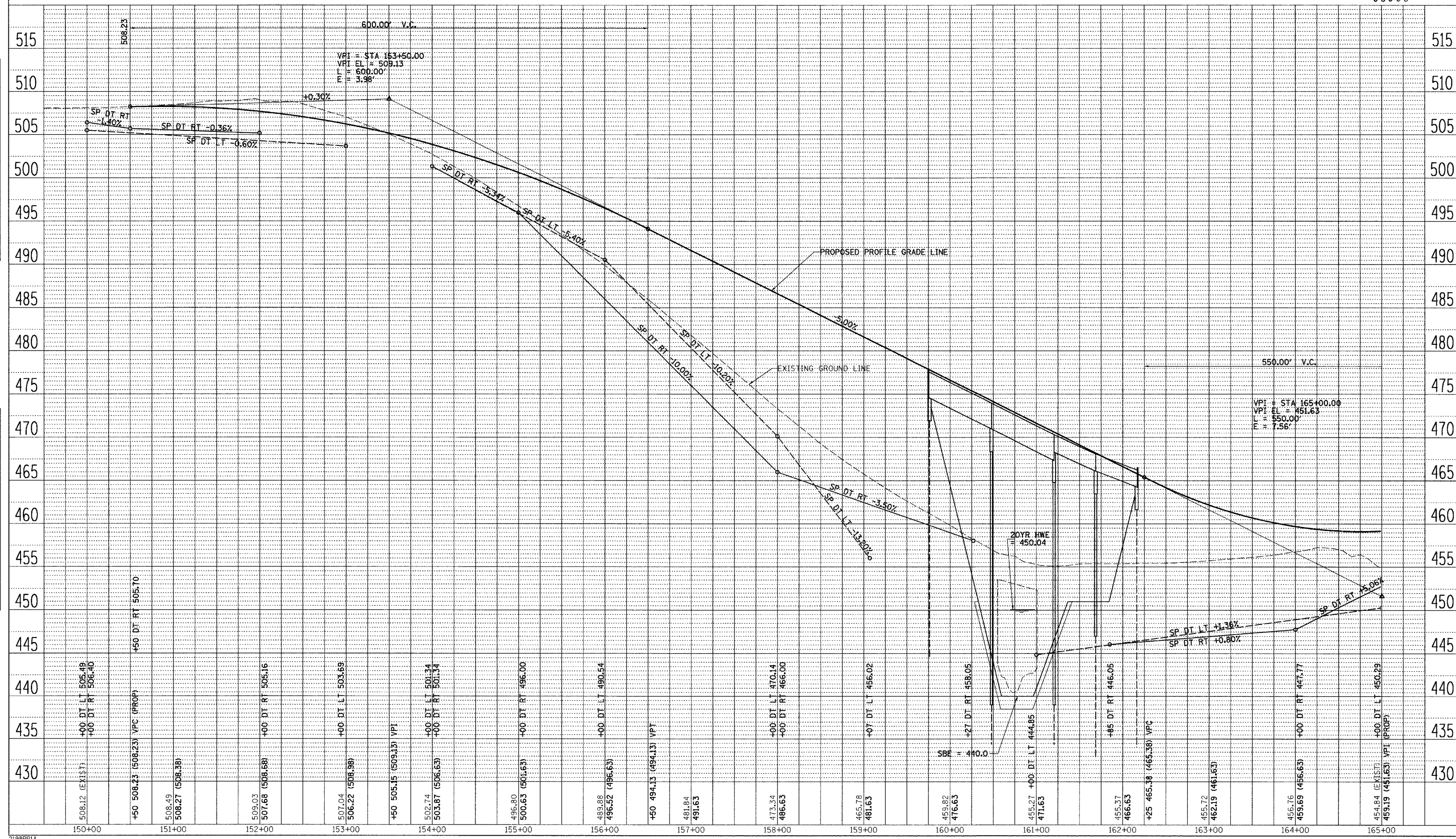


RTE.	SECTION	COUNTY	TOTAL SHEETS	SHEET NO.
• 02-00088-00-BR		MORGAN	76	10
STA. 150+00		TO STA. 165+00		
FED. ROAD DIST. NO. 7 ILLINOIS FED. AID PROJECT				
• COUNTY HIGHWAY 19 (FAS 611)				
CONTRACT NO. 93388				



DATE	BY
SURVEYED	
ALIGNMENT CHECKED	
RT. OF WAY CHECKED	
NO. FILE NAME	
NOTE BOOK	
NO.	
PLAN	

DATE	BY
PROFILE	
GRADES CHECKED	
B.M. NOTE	
STRUCTURE NOTATIONS OK'D	
NOTE BOOK	
NO.	

2198PP1A

LITERBERRY-PRENTICE ROAD (CH 19), STA 150+00 TO STA 165+00