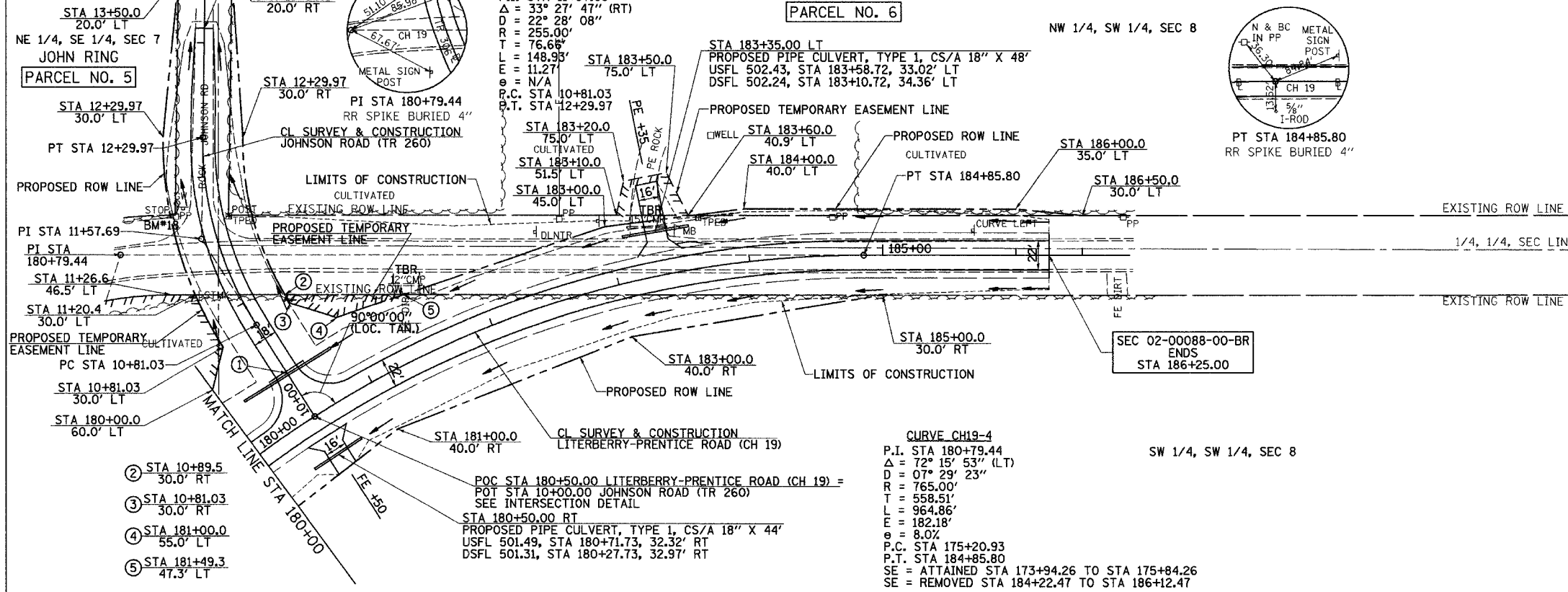


SEC 7, T 16 N,  
R 9 W, 3RD PM

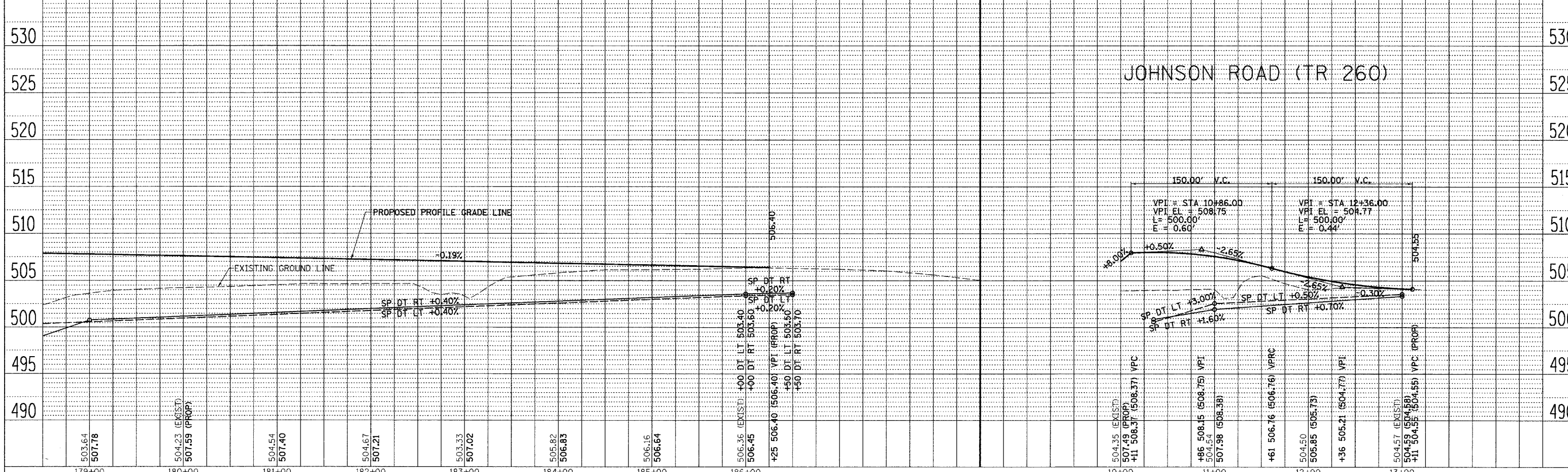
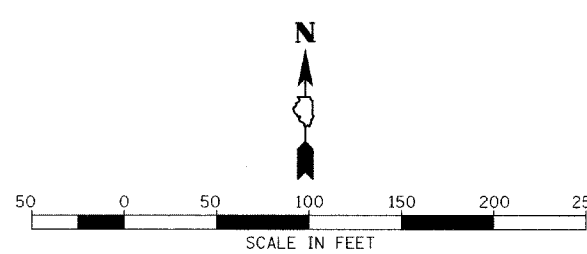
SEC 8, T 16 N, R 9 W, 3RD PM

F.A. RTE.	SECTION	COUNTY	TOTAL SHEETS	SHEET NO.
02-00088-00-BR		MORGAN	76	13
STA. 180+00		TO STA. 186+25		
FED. ROAD DIST. NO.		ILLINOIS	FED. AID PROJECT	
		COUNTY HIGHWAY 19 (FAS 611)		
<b>CONTRACT NO. 93388</b>				



- ① STA 180+50.00 LT PROPOSED PIPE CULVERT, TYPE 2, CS/A 18" X 72' USFL 501.34, STA 180+85.58, 37.68' LT DSFL 501.05, STA 180+13.58, 38.99' LT
- ② STA 10+89.5 30.0' RT
- ③ STA 10+81.03 30.0' RT
- ④ STA 181+00.0 55.0' LT
- ⑤ STA 181+49.3 47.3' LT

SEC 8, T 16 N, R 9 W, 3RD PM



LITERBERRY-PRENTICE ROAD (CH 19), STA 180+00 TO STA 186+25