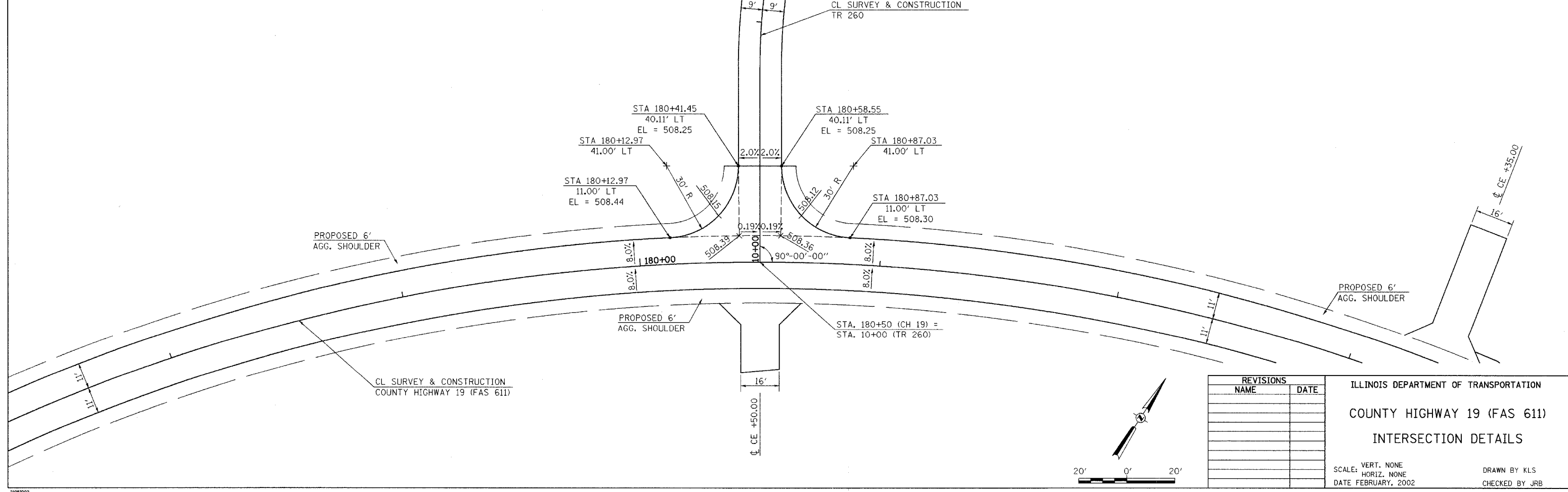
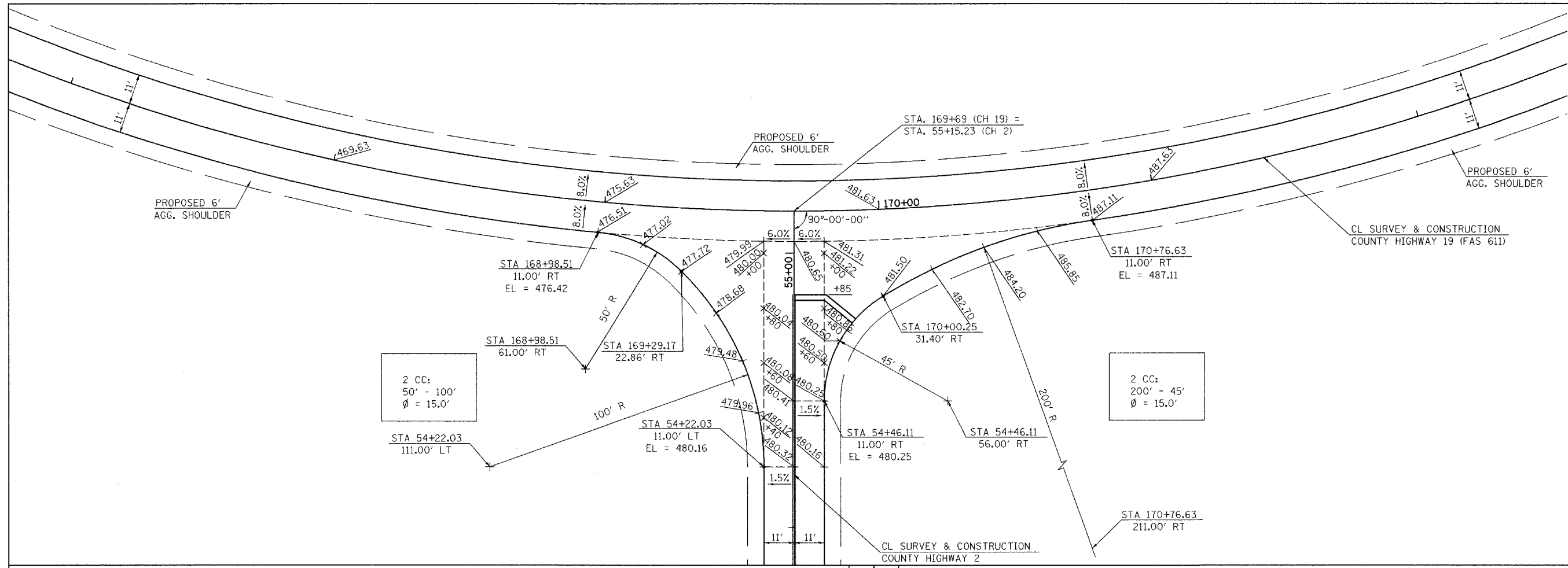


RTE	SECTION	COUNTY	TOTAL SHEETS	SHEET NO.
* 02-00088-00-BF		MORGAN	76	16
STA.	TO STA.			
FED. ROAD DIST. NO.	ILLINOIS	FED. AID PROJECT		
* COUNTY HIGHWAY 19 (FAS 611)				
CONTRACT NO. 93388				



REVISIONS	
NAME	DATE

ILLINOIS DEPARTMENT OF TRANSPORTATION
 COUNTY HIGHWAY 19 (FAS 611)
 INTERSECTION DETAILS

SCALE: VERT. NONE
 HORIZ. NONE
 DATE FEBRUARY, 2002

DRAWN BY KLS
 CHECKED BY JRB