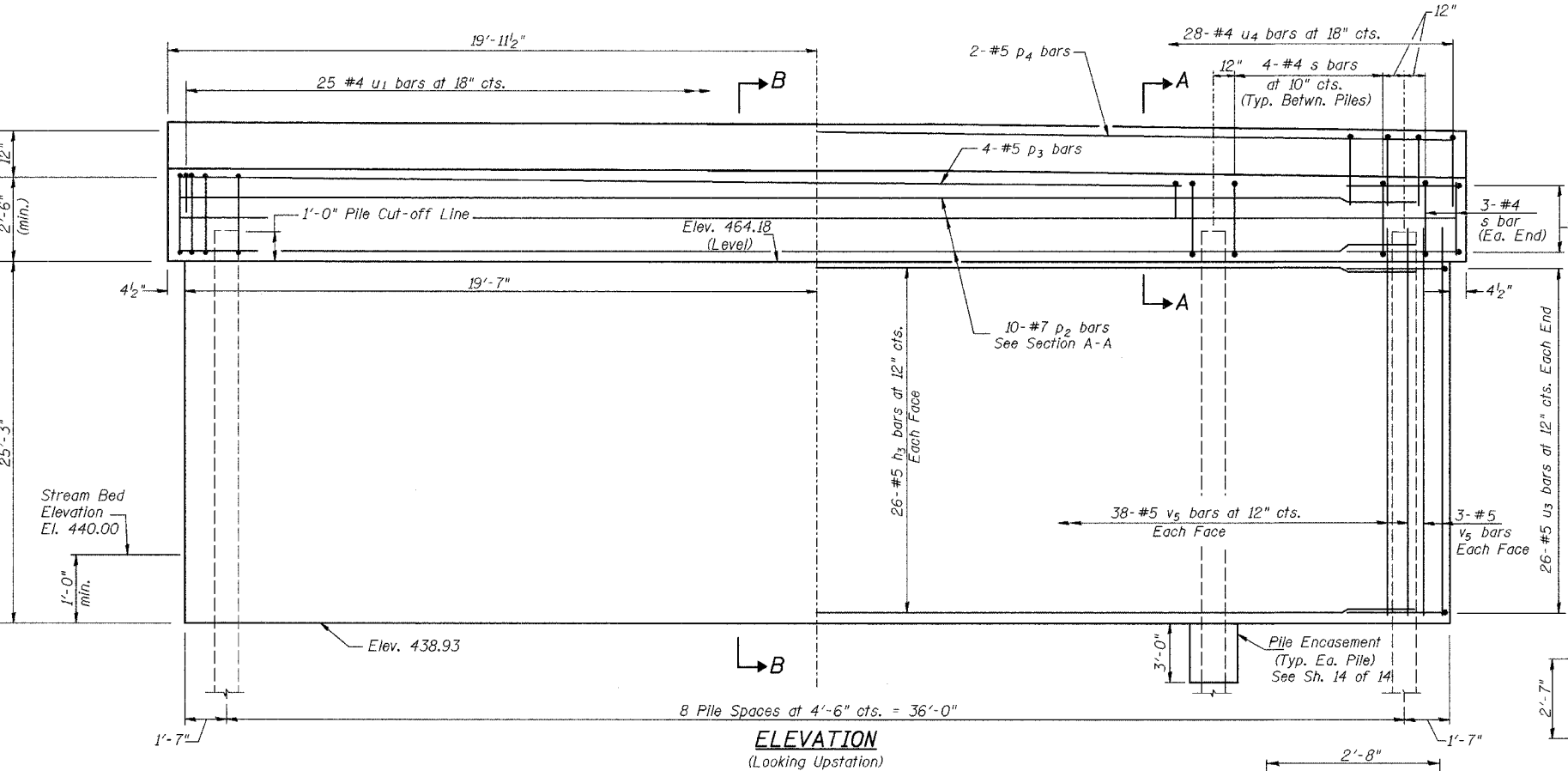
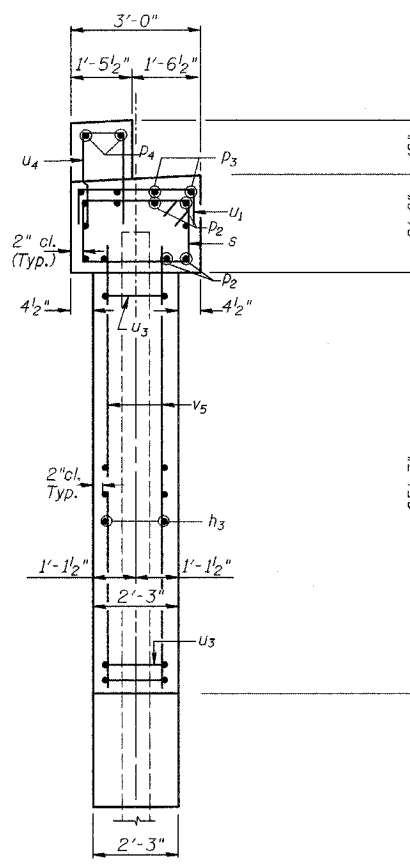
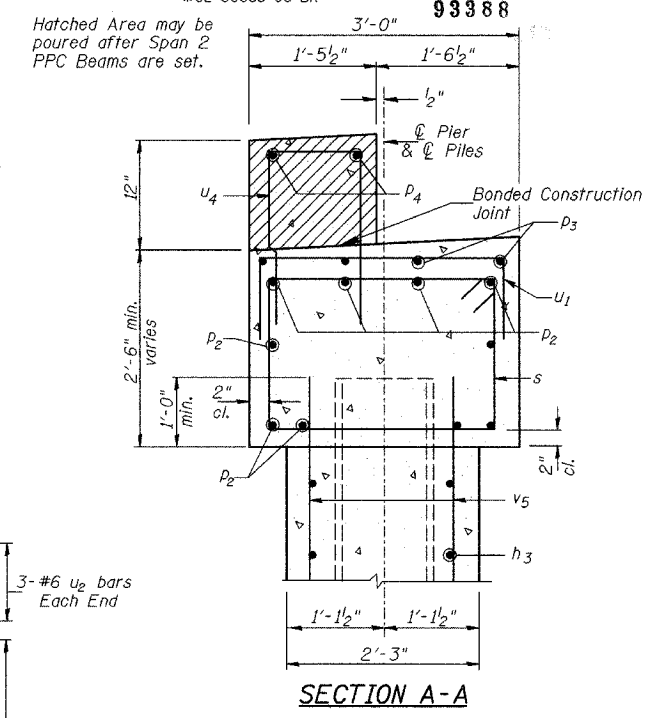
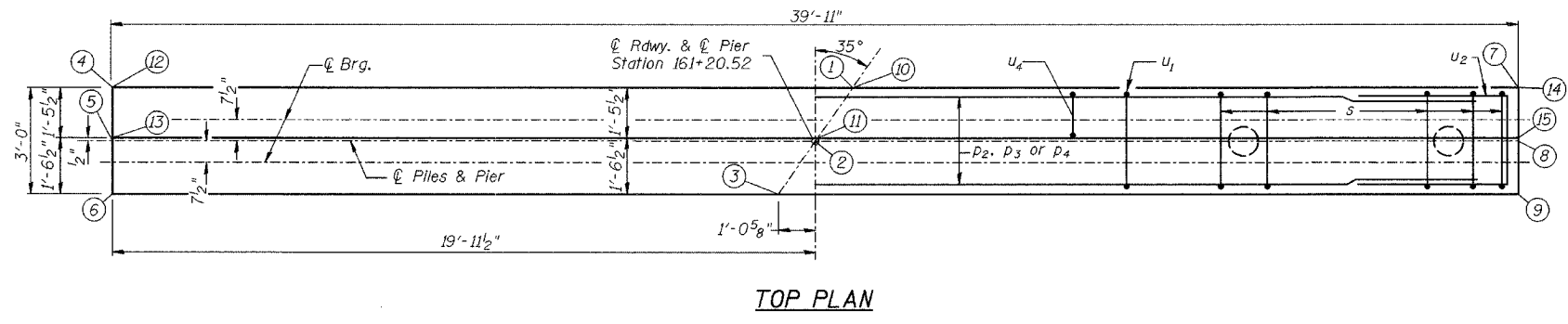


NOTES:  
All edges shall have standard  
3/4" chamfer.

ROUTE NO.	SECTION	COUNTY	TOTAL SHEETS	SHEET NO.
CH 19	*	MORGAN	76	33
FED. ROAD DIST. NO. 7		ILLINOIS	PROJECT RS-BRS-611(106)	
*02-00088-00-BR				

SHEET NO. 12  
14 SHEETS



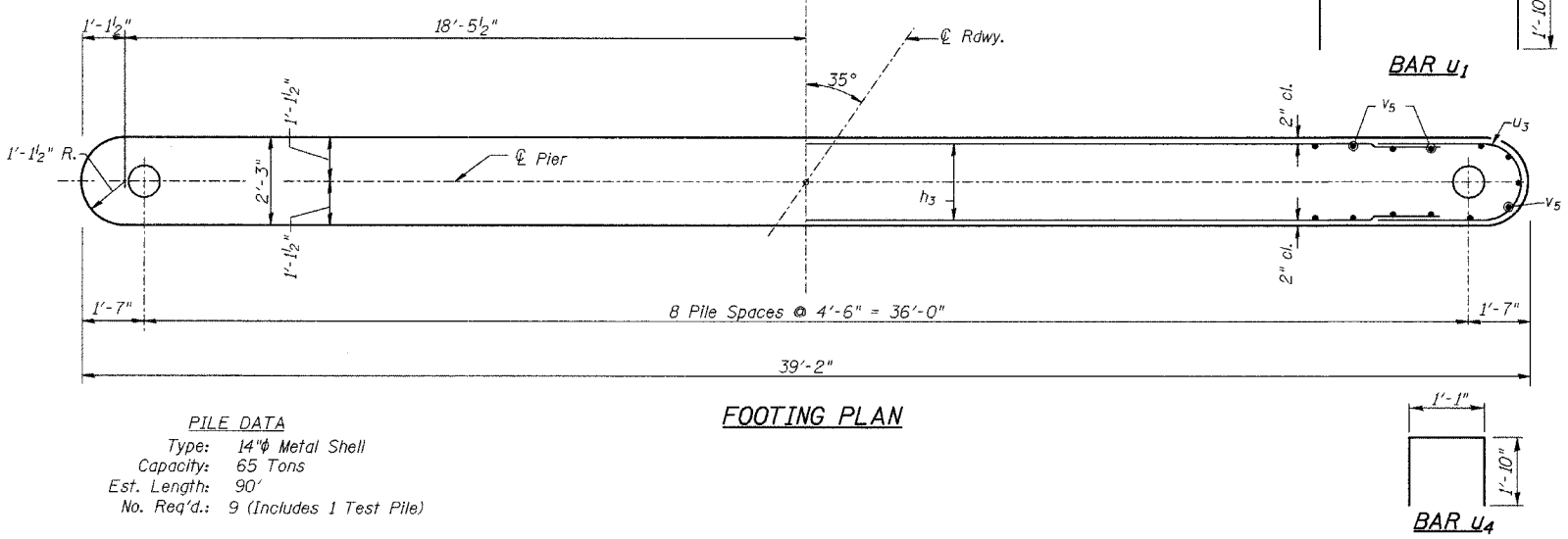
**PIER #2  
BILL OF MATERIAL**

BAR	NO.	SIZE	LENGTH	SHAPE
h3	52	#5	36'-7"	—
p2	10	#7	39'-7"	—
p3	4	#5	35'-10"	—
p4	2	#5	39'-7"	—
s	38	#4	10'-5"	□
u1	25	#4	6'-4"	□
u2	6	#6	11'-7"	□
u3	52	#5	7'-0"	□
u4	28	#4	4'-9"	□
v5	82	#5	26'-1"	—

① Concrete Structures CU YD 88.4  
Reinforcement Bars POUND 6,200  
Structure Excavation CU YD 75  
Furnishing Metal Pile Shells 14" FOOT 720  
Driving and Filling Shells FOOT 720  
Test Pile Metal Shells EACH 1  
① Concrete Encasement CU YD 4.0  
① Underwater Structure Excavation Protection, Location 2 EACH 1  
① See Special Provisions

**TABLE OF ELEVATIONS**

LOCATION	DESCRIPTION	ELEVATION
①	Top of Cap	467.47
②	Top of Cap	467.56
③	Top of Cap	467.65
④	Top of Cap	467.80
⑤	Top of Cap	467.88
⑥	Top of Cap	467.95
⑦	Top of Cap	466.68
⑧	Top of Cap	466.73
⑨	Top of Cap	466.78
⑩	Top of Step	468.47
⑪	Top of Step	468.56
⑫	Top of Step	468.80
⑬	Top of Step	468.88
⑭	Top of Step	467.68
⑮	Top of Step	467.73



**PILE DATA**  
Type: 14" Metal Shell  
Capacity: 65 Tons  
Est. Length: 90'  
No. Req'd: 9 (Includes 1 Test Pile)

**PIER #2  
C.H. 19 OVER CONOVER BRANCH  
SECTION 02-00088-00-BR  
MORGAN COUNTY  
STATION 160+96.19**